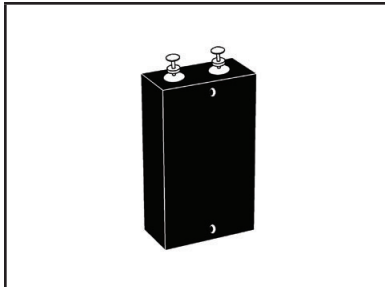
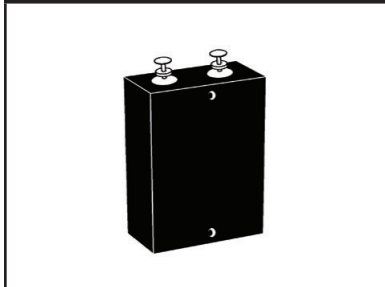


SHIPBOARD/AC POWER BUS VOLTAGE SUPPRESSOR



60KS PACKAGE



90KS PACKAGE

DESCRIPTION

The 60 & 90KS Series of devices are designed in accordance with DOD-STD-1399, section 300 interface standard and MIL-STD704A for shipboard systems, electrical power and alternating current. When large voltage transients endanger voltage sensitive components, this series provides reliable protection against power interruptions and shore power switch-over.

This series can be screened upon request for military requirements in accordance with MIL-PRF-19500 (applicable tests).

FEATURES

- DOD-STD-1399 & MIL-STD-704A Compliant
- 60 & 90 kilowatts Peak Pulse Power per Line (tp = 1.2/50μs)
- Each Device 100% Tested
- 200 Volts Bidirectional

APPLICATIONS

- AC Power Protection
- Shipboard (Line-Line) Protection
- Differential AC Power Bus
- Aircraft AC Power Bus

MECHANICAL CHARACTERISTICS

- Hermetically Sealed Glass to Metal Sub-Assemblies
- Approximate Weight: 50 grams
- Flammability Rating UL 94V-0
- Screening Available Upon Request:
 - H1 - Submodule Screening (Test Plans 05231 & 05232)
 - H2 - Submodule & Module Screening (Test Plan 05233)
 - H3 - Submodule & Module Screening with Group B & C Lot Testing (Test Plans 05234 & 05235)

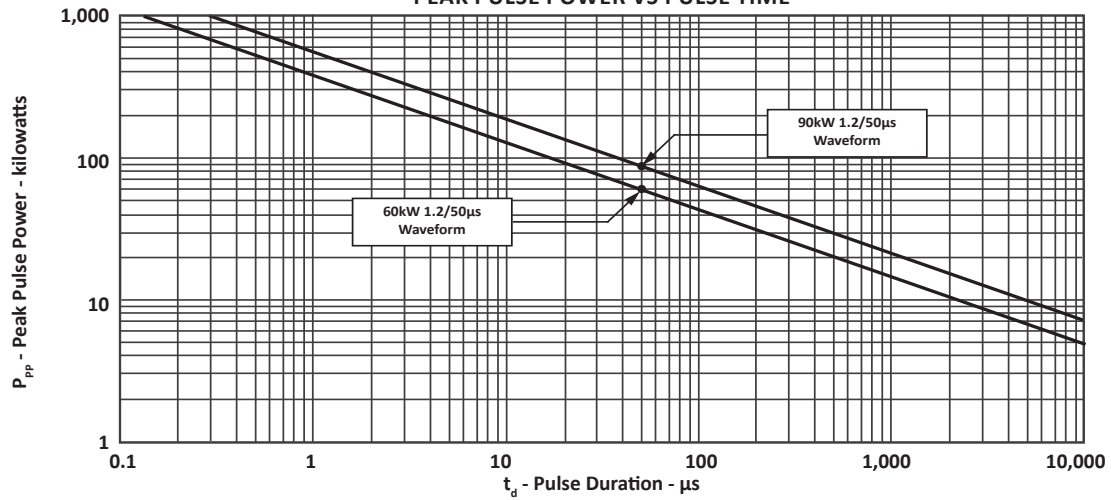
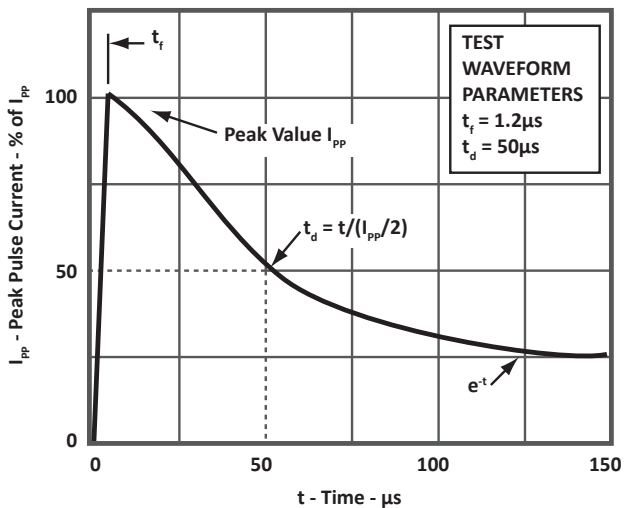
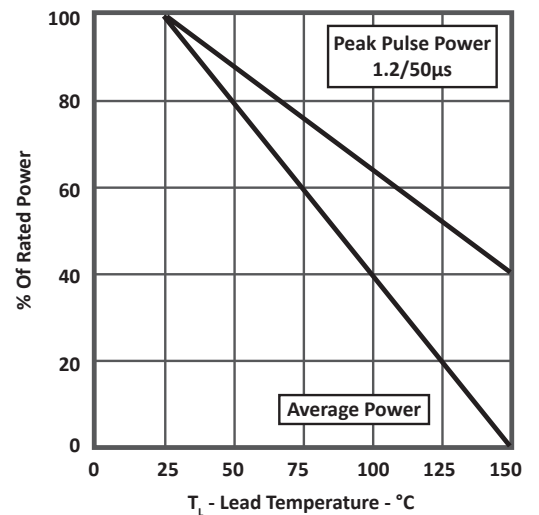
TYPICAL DEVICE CHARACTERISTICS
MAXIMUM RATINGS @ 25°C Unless Otherwise Specified

PARAMETER	SYMBOL	VALUE	UNITS
Peak Pulse Power (tp = 1.2/50μs) - See Figure 1	P_{PP}	60 & 90	kilowatts
Operating Temperature	T_L	-55 to 150	°C
Storage Temperature	T_{STG}	-55 to 150	°C
Steady State Power Dissipation	-	10.0	Watts

ELECTRICAL CHARACTERISTICS PER LINE @ 25°C Unless Otherwise Specified

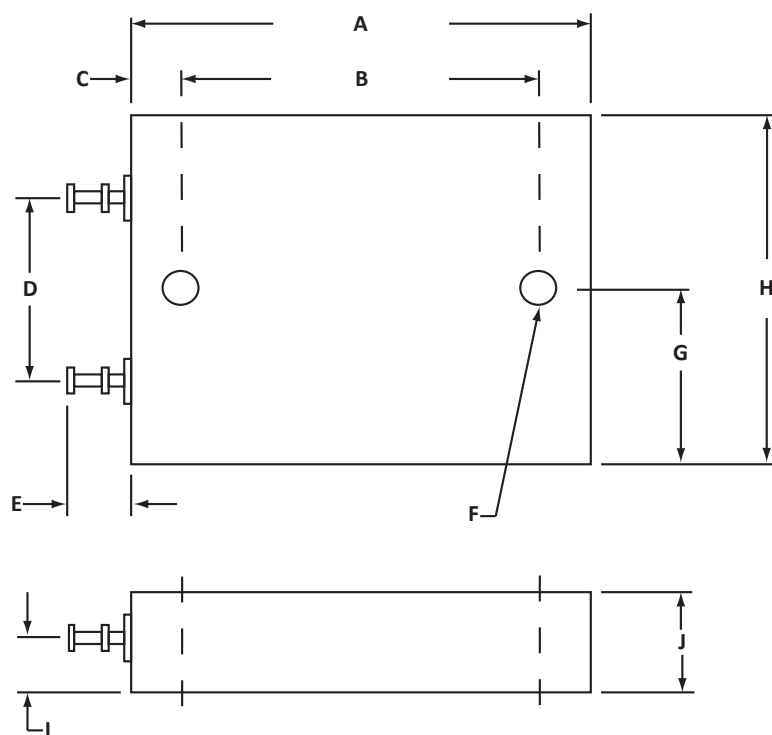
PART NUMBER	RATED STAND-OFF VOLTAGE V_{WM} VOLTS	MINIMUM BREAKDOWN VOLTAGE @1mA $V_{(BR)}$ VOLTS	MAXIMUM CLAMPING VOLTAGE (Fig. 2) @ I_{PP} V_C VOLTS	MAXIMUM LEAKAGE CURRENT @ V_{WM} I_D μA	MAXIMUM PEAK PULSE CURRENT I_{PPM} AMPS
60KS200C	180	200	335	10	180
90KS200C	180	200	280	0.5	180

TYPICAL DEVICE CHARACTERISTICS

FIGURE 1
PEAK PULSE POWER VS PULSE TIME

FIGURE 2
PULSE WAVEFORM

FIGURE 3
POWER DERATING CURVE


PACKAGE INFORMATION
90KS OUTLINE DIMENSIONS

DIM	MILLIMETERS		INCHES	
	MIN	MAX	MIN	MAX
A	-	63.50	-	2.50
B	47.75	48.77	1.88	1.92
C	6.10	6.60	0.24	0.26
D	24.89	25.91	0.98	1.02
E	-	10.16	-	0.40
F	4.90 DIA.	5.21 DIA.	0.193 DIA.	0.205 DIA.
G	22.66	23.06	0.892	0.908
H	45.34	46.10	1.785	1.815
I	6.48	7.49	0.255	0.295
J	-	13.97	-	0.55

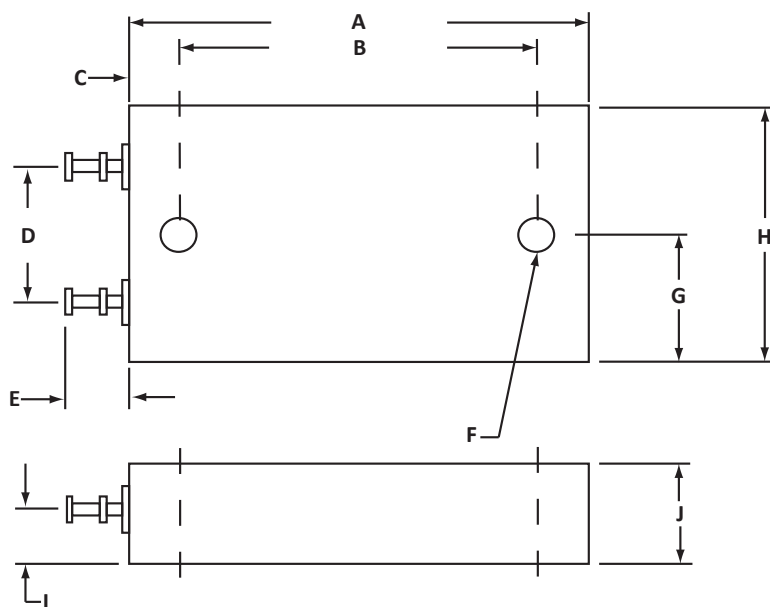


PACKAGE INFORMATION

60KS OUTLINE DIMENSIONS

DIM	MILLIMETERS		INCHES	
	MIN	MAX	MIN	MAX
A	56.38	57.91	2.22	2.28
B	49.02	50.03	1.93	1.97
C	3.43	4.17	0.135	0.165
D	20.32		0.800	
E	8.26	9.27	0.325	0.365
F	3.18 DIA.		0.125 DIA.	
G	16.76	18.29	0.660	0.720
H	34.16	35.69	1.345	1.405
I	6.35		0.250	
J	11.94	13.46	0.47	0.53

NOTES
1. Dimensions "D", "F" and "I" are nominal.



ORDERING INFORMATION

BASE PART NUMBER	SUBMODULE SCREENING	SUBMODULE & MODULE SCREENING	SUBMODULE & MODULE SCREENING, GROUP B & C LOT TESTING
60KS200C	H1	H2	H3
90KS200C	H1	H2	H2

NOTES

1. Marking on Part - logo, date code and part number.

Package outline per document number 06033.R1 9/09

COMPANY INFORMATION

COMPANY PROFILE

In business more than 20 years, ProTek Devices™ is a privately-held company located in Tempe, Arizona, that offers a product line of transient voltage suppressors (TVS); avalanche breakdown diodes; steering diode TVS arrays and other surge suppressor component products. These TVS devices protect electronic systems from the effects of lightning, electrostatic discharge (ESD), nuclear electromagnetic pulses (NEMP), inductive switching and EMI / RFI. ProTek Devices also offers high performance interface and linear products that include analog switches; multiplexers; LED drivers; audio control ICs; RF and related high frequency products. The analog devices work in a host of consumer; industrial; automotive and other applications.

CONTACT US

Corporate Headquarters

2929 South Fair Lane
Tempe, Arizona 85282
USA

By Telephone

General: 602-431-8101
Sales: & Marketing: 602-414-5109
Customer Service: 602-414-5114
Product Technical Support: 602-414-5107

By Fax

General: 602-431-2288

By E-mail:

Sales: sales@protekdevices.com
Customer Service: service@protekdevices.com
Technical Support: support@protekdevices.com

ProTek Devices (Asia Pacific) Pte. Ltd.

8 Ubi Road 2, #06-19
Zervex
Singapore - 408538
Tel: +65-67488312
Fax: +65-67488313

Web

www.protekdevices.com

COPYRIGHT © ProTek Devices 1998 - This literature is subject to all applicable copyright laws and is not for resale in any manner.

SPECIFICATIONS: ProTek reserves the right to change the electrical and or mechanical characteristics described herein without notice.

DESIGN CHANGES: ProTek reserves the right to discontinue product lines without notice and that the final judgement concerning selection and specifications is the buyer's and that in furnishing engineering and technical assistance. ProTek assumes no responsibility with respect to the selection or specifications of such products. ProTek makes no warranty, representation or guarantee regarding the suitability of its products for any particular purpose, nor does ProTek assume any liability arising out of the application or use of any product or circuit and specifically disclaims any and all liability without limitation special, consequential or incidental damages.

LIFE SUPPORT POLICY: ProTek Devices products are not authorized for use in life support systems without written consent from the factory.