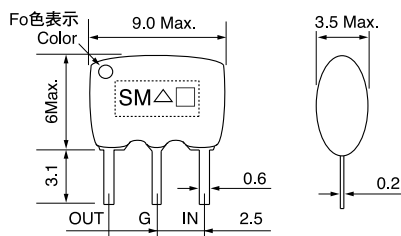


**TYPE CFSC High reliability Series**  
**CFSE High reliability & Wide Bandwidth**


(Unit: mm)

**Description**

- **CFSC & CFSE** series is a low insertion loss and high-reliability ceramic filter for FM-IF stage for use in car audio and information equipment.
- **CFSE107MB** type is a wide bandwidth for digital communication and high-speed wireless communication.

**Features**

- Low insertion loss
- High reliability (returns to original values soon after soldering)
- Low temperature coefficient
- Wide bandwidth (CFSE107MB type)
- RoHS compliant

**Applications**

- Car audio, HD Radio
- Keyless entry system
- Information equipment

**概要**

- カーオーディオや情報関連機器向け低損失と高信頼性を達成したFM-IF段用セラミックフィルタ
- デジタル無線通信、高速無線通信等向けに広帯域品：CFSE107MB/MCタイプをラインアップ。

**特長**

- 低挿入損失
- 高信頼性（はんだ加熱後の特性復帰時間が短い）
- 低温度係数
- 広通過帯域（CFSE107MB/MCタイプ）
- RoHS 指令対応

**用途**

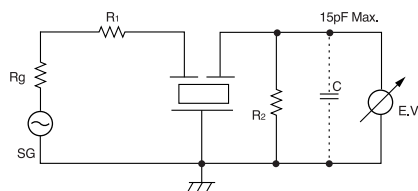
- カーオーディオ、HDラジオ
- キーレスエントリー
- 情報関連機器

**SELECTION GUIDE FOR STANDARD FILTERS**
**TYPE CFSC Series**

| 東光品番             | 中心周波数                  | 3dB帯域幅                 | 20dB帯域幅                     | 挿入損失                | スプリアス減衰量                   | 入出力側インピーダンス                |
|------------------|------------------------|------------------------|-----------------------------|---------------------|----------------------------|----------------------------|
| TOKO Part Number | Center Frequency (kHz) | Bandwidth at 3dB (kHz) | Bandwidth at 20dB (kHz)Max. | Insertion Loss (dB) | Spurious Response (dB)Min. | Input/Output Impedance (Ω) |
| #SC107M2-A0-20C  | 10.7±0.03              | 230±40                 | 520                         | 3.0±2.0             | 40                         | 330/330                    |
| #SC107M3-A0-20C  | 10.7±0.03              | 180±40                 | 450                         | 3.5±1.5             | 40                         | 330/330                    |
| #SC107M4-A0-20C  | 10.7±0.03              | 150±40                 | 340                         | 4.5±2.0             | 40                         | 330/330                    |

**TYPE CFSE Series**

| 東光品番             | 中心周波数                  | 3dB帯域幅                 | 20dB帯域幅                     | 挿入損失                | スプリアス減衰量                   | 入出力側インピーダンス                |
|------------------|------------------------|------------------------|-----------------------------|---------------------|----------------------------|----------------------------|
| TOKO Part Number | Center Frequency (kHz) | Bandwidth at 3dB (kHz) | Bandwidth at 20dB (kHz)Max. | Insertion Loss (dB) | Spurious Response (dB)Min. | Input/Output Impedance (Ω) |
| #SE107MB-A0-10C  | 10.7±0.03              | 440±40                 | 950                         | 2.5±2.0             | 30                         | 330/330                    |
| #SE107MC-A0-30C  | 10.7±0.03              | 500±40                 | 950                         | 2.0±2.0             | 18                         | 330/330                    |

**Test circuit 測定回路**

**Test conditions**
 $R_g + R_1 = 330\Omega$   
 $R_2 = 330\Omega$   
 $C = 15\text{pF Max.}$ 
**測定条件**
 $R_g + R_1 = 330\Omega$   
 $R_2 = 330\Omega$   
 $C = 15\text{pF Max.}$