

# STR-Y6700 Series

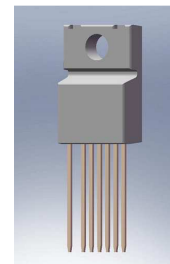
## Power IC for Quasi-Resonant Mode Switching Power Supplies with Low Standby Power, High Efficiency and Low Noise in Full Load Range

### ■ General Descriptions

The STR-Y6700 series products are power ICs for quasi-resonant (QR) switching mode power supplies, incorporating a power MOSFET and a controller IC.

The product achieves high efficiency and low noise systems, by automatic switching of Auto-Standby operation under light load conditions, QR operation and Bottom-Skip QR operation in normal operation.

The product easily achieves high cost-performance power supply systems with few external components.



TO-220F (FMY207)

### ■ Features

#### ● Multi-Mode Control

The automatic operation mode switching with three steps according to load conditions achieves the optimal power supply systems with high efficiency and low noise across full load range.

- In Standby----- Auto Standby Operation ( Burst-Oscillation)
- Under Low to Middle Load Conditions ----- Bottom-Skip Quasi-Resonant Operation (Bottom-Skip QR)
- Under Middle to Rating (or Heavy) Load Conditions -- Quasi-Resonant Operation (QR)

#### ● Current-Mode Control

#### ● Built-in Startup Circuit, enabling Low Power Consumption

#### ● Auto-Standby Function with burst-oscillation, enabling low standby power

Input Power at no load :  $P_{IN} < 30mW$  (100VAC),  $P_{IN} < 50mW$  (240VAC)

#### ● Soft-ON Function, preventing the audible noise from transformer at standby (Burst-Oscillation)

#### ● Built-in Soft-Start Function

#### ● Built-in Bias Assist Function

#### ● Overcurrent Protection (OCP) with AC Input Compensation Function

#### ● Built-in Leading Edge Blanking Function

#### ● Built-in High-Voltage Power MOSFET with Avalanche Energy Guaranteed

#### ● Protection Functions

- Overcurrent Protection (OCP) ----- Pulse-by-Pulse
- Overload Protection (OLP) ----- Latch Shutdown
- Overvoltage Protection (OVP) ----- Latch Shutdown
- Thermal Shutdown Protection (TSD) ----- Latch Shutdown

### ■ Applications

Switching Power Supplies for

Digital Consumer Equipments: LCD-TV's, BD / DVD Players / Recorders, etc.,

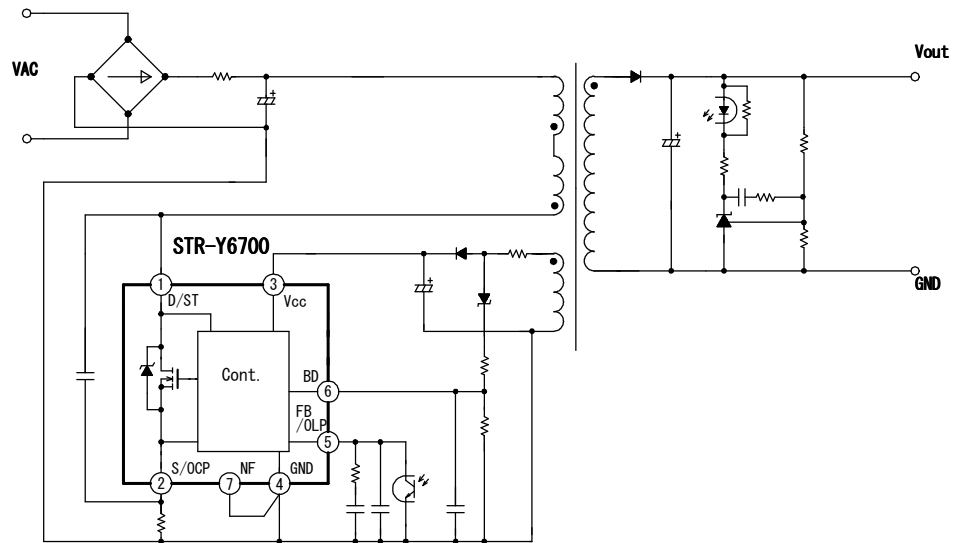
Home Appliance (White Goods), OA Equipments, Industry Machines, Communication Equipments, Others

### ■ Product Lineup

Product No.	MOSFET $V_{DSS}$ (MIN) (V)	$R_{DS(ON)}$ (MAX) ( $\Omega$ )
STR-Y6735	500	0.8
STR-Y6753	650	1.9
STR-Y6754		1.4

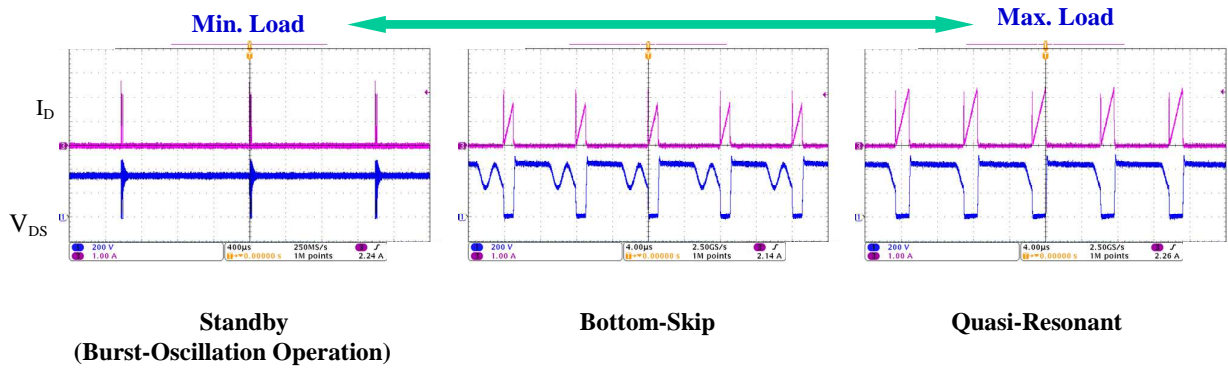
Product No.	MOSFET $V_{DSS}$ (MIN) (V)	$R_{DS(ON)}$ (MAX) ( $\Omega$ )
STR-Y6763	800	3.5
STR-Y6765		2.2
STR-Y6766		1.7

## ■ Typical Application Circuit

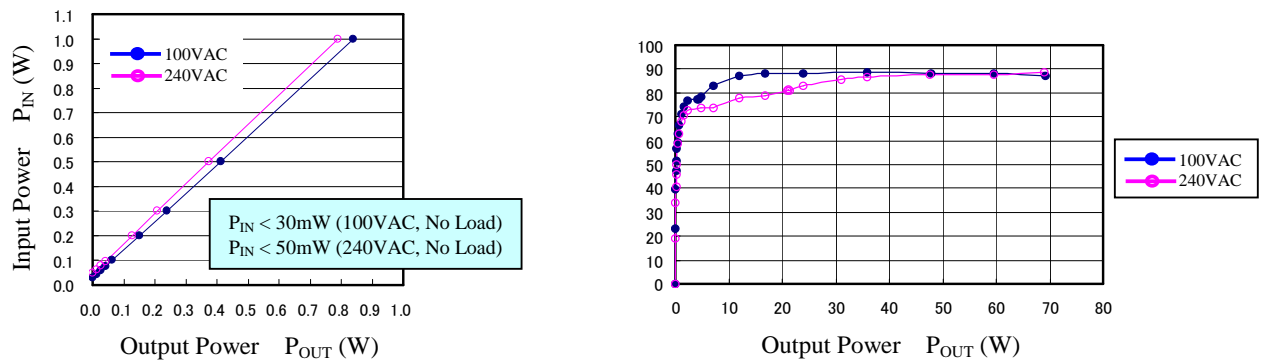


## ■ Typical Operation Waveforms and Electrical Characteristics

Operation Mode Transitions



## Reference: Efficiency Characteristics (Wide Input, 70W Power Supply)



### Warning

- The contents in this document are subject to changes, for improvement and other purposes, without notice. Make sure that this is the latest version of the document before use.
- The operation and circuit examples in this document are provided for reference purposes only. Sanken assumes no liability for violation of industrial property, intellectual property, or other rights of Sanken or third parties, that stem from these examples.
- The user must take responsibility for considering and determining which objects the products in this document are used with.
- Although Sanken will continue to improve the quality and reliability of its products, semiconductor products, by their nature, have certain fault and failure rates. The user must take responsibility for designing and checking to secure the device and system so that a part failure may not lead to human injury, fire, damages, or other losses.
- The contents in this document must not be transcribed or copied without Sanken's written consent.

SANKEN ELECTRIC CO.,LTD.