

# MICRO

MS256  
MG256  
M0256

TWO DIGIT  
0.5" DISPLAY

T-41-33

## SEVEN SEGMENT NUMERIC DISPLAY

- High Performance GaP
- 0.5 Inch Character Height
- Common Anode or Common Cathode Models
- Solid State Reliability - Long Operation Life
- High Contrast
- Wide Viewing Angle

## AVAILABLE IN 3 COLORS

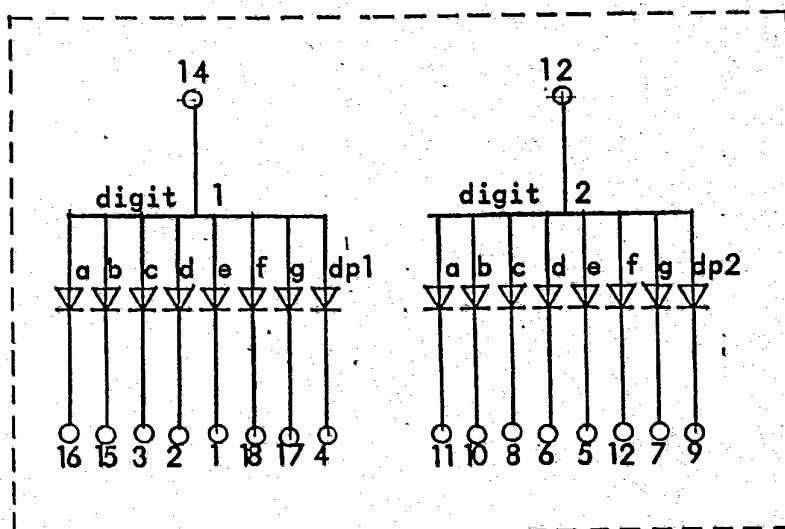
- MS256 RED
- MG256 GREEN
- M0256 ORANGE

## MAXIMUM RATING, PER SEGMENT (Ta=25°C)

Reverse Voltage	VR	5V
Peak Forward Current / Segment	IF/Pulse*	200mA
Continuous Forward Current / Segment	IF/DC	20mA
Power Dissipation	PD	300mW
Storage Temperature Range	Tstg	-20 to +85°C
Operating Temperature	Topr	-20 to +85°C

\* Note : Pulse Width = 1mS, Duty Ratio = 1/10.

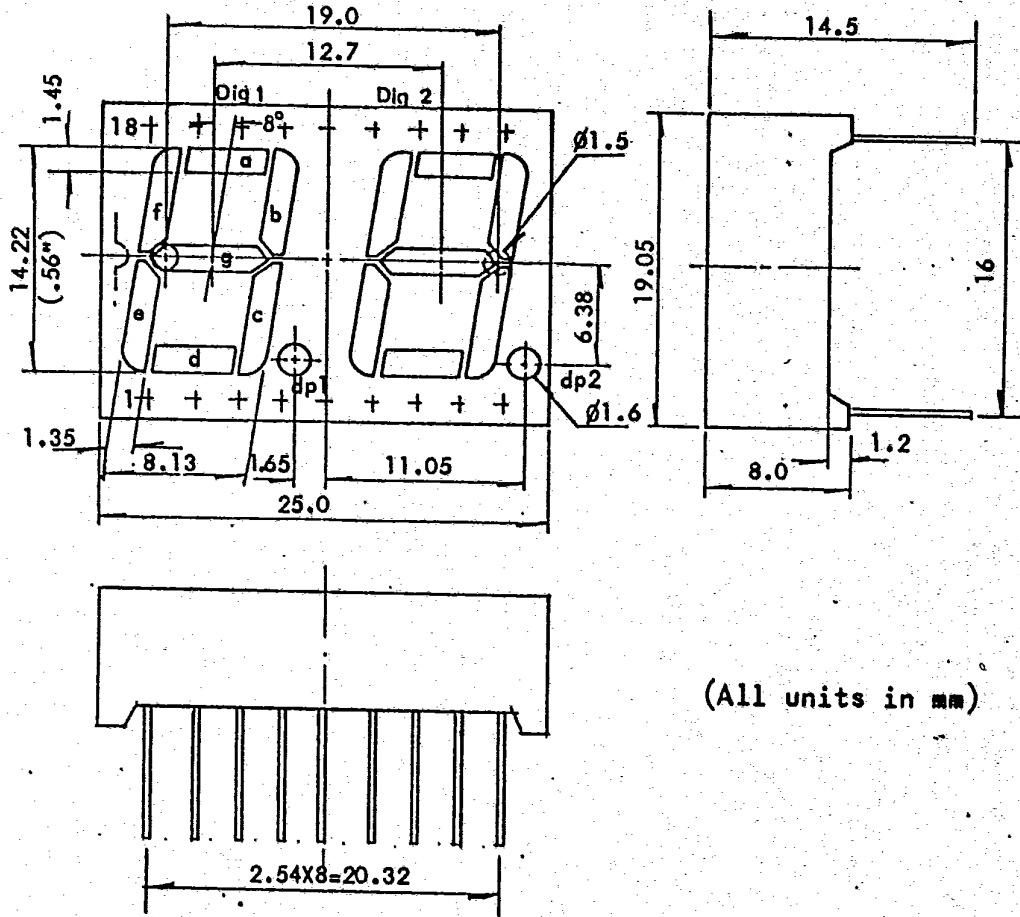
## CIRCUIT DIAGRAM



**MICRO ELECTRONICS LTD.**

38, HUNG TO ROAD, KWUN TONG, HONG KONG. TELEX: 43510  
KWUN TONG P. O. BOX 69477 CABLE ADDRESS "MICROTRON"  
TEL. 3-430181-5 FAX. NO. 3-410321

MECHANICAL DIMENSIONS



(All units in mm)

CHARACTERISTICS PER SEGMENT ( $T_a=25^\circ\text{C}$ )

PARAMETER	SYMBOL	MS256	MG256	MO256	UNIT	CONDITIONS
Static Forward Voltage	VF	2.2	2.2	2.2	V	IF=20mA
Luminous Intensity	IV	600	300	1000	$\mu\text{cd}$	IF=10mA
Segment to Segment Luminous Intensity Ratio		1.5:1	1.5:1	1.5:1		IF=10mA
Wave Length At Peak Emission	$\lambda_P$	700	565	630	nm	
Spectral Half Width	$\Delta\lambda$	100	30	30	nm	