

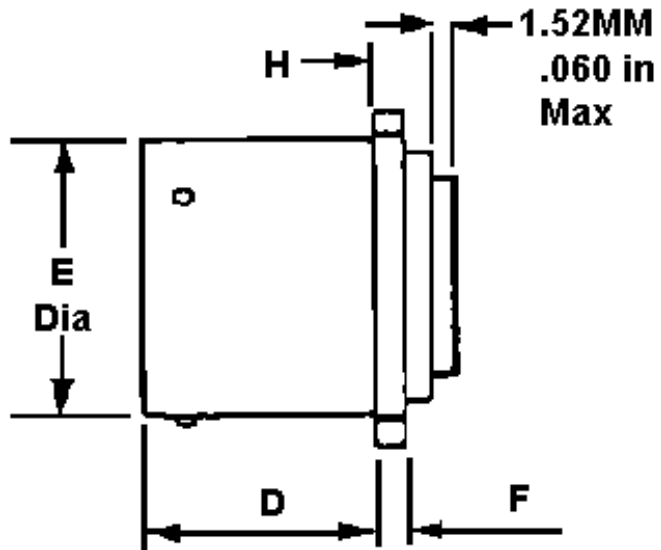
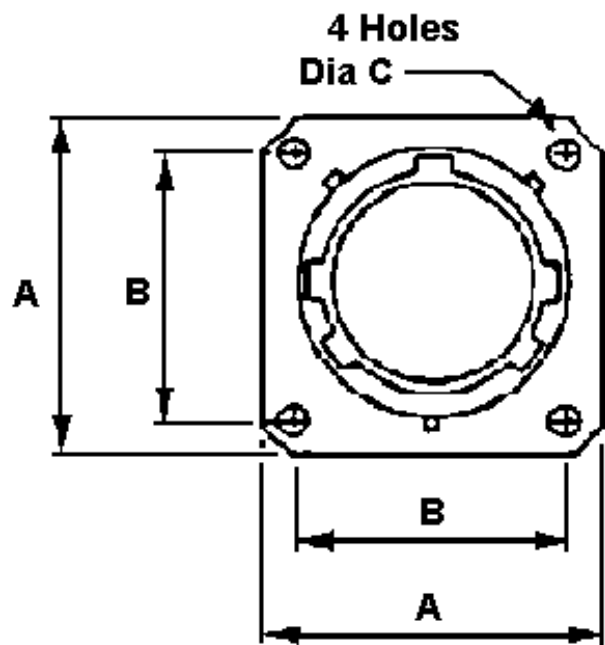
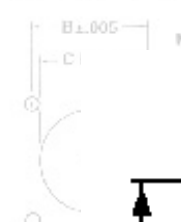
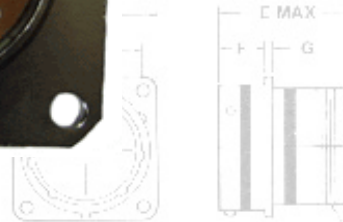
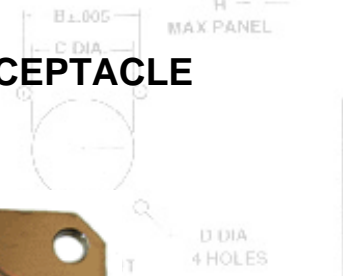
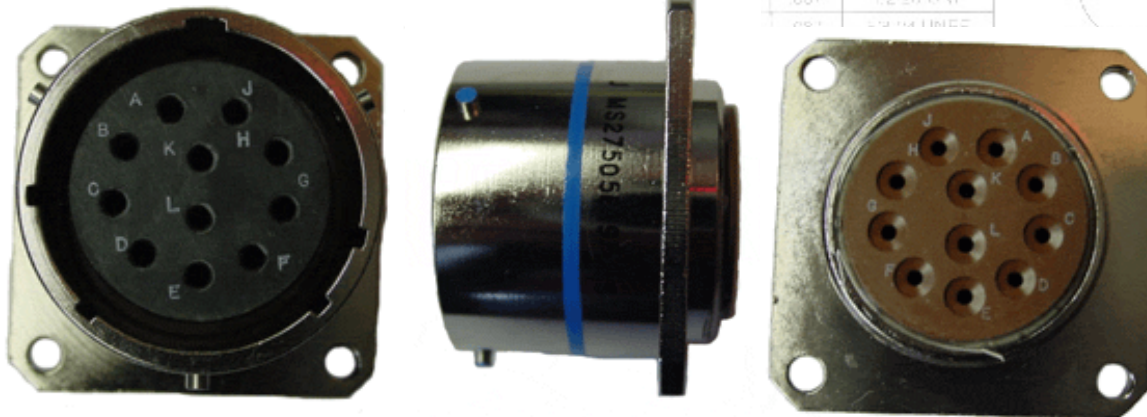


Allen Electric Connector Sales, inc.



MS27505 SERIES I BACK PANEL BOX MOUNTING FLANGE RECEPTACLE

SHELL SIZE	A MAX	B = .005	C = .005	D = .005	E MAX	F = .015	G = .015	H MAX	J THREAD 2A
					.057			.057	1/2-20 UNF
									1/2-20 UNF



SHELL SIZE	A THREAD CLASS 2A UNEF	A MAX DIA		B NOM. CRS		C MIN DIA		D MAX		E MAX DIA		F MAX	
		INCH	MM	INCH	MM	INCH	MM	INCH	MM	INCH	MM	INCH	MM
9	.4375-28	.958	24.33	.719	18.26	.123	3.13	0.82	2.54	.573	14.55	.100	2.54
11	.5625-24	1.051	26.69	.812	20.62	.123	3.13	0.82	2.54	.701	17.80	.100	2.54
13	.6875-24	1.145	29.08	.906	23.01	.123	3.13	0.82	2.54	.851	21.61	.100	2.54

15	A	.81250-20	1.239	31.47	.969	24.61	.123	3.13	0.82	2.54	.976	24.79	.100	2.54
17		.9375-20	1.332	33.83	1.062	26.97	.123	3.13	0.82	2.54	1.101	27.96	.100	2.54
19		1.0625-18	1.458	37.03	1.156	29.36	.123	3.13	0.82	2.54	1.208	30.68	.100	2.54
21		1.875-18	1.582	40.18	1.250	31.75	.123	3.13	0.79	3.3	1.333	33.85	1.30	3.30
23		1.3125-18	1.708	43.38	1.375	34.93	.142	3.61	0.79	3.3	1.458	37.03	1.30	3.30
25		1.4375-18 J THREAD	1.832	46.53	1.500	38.10	.142	3.61	0.79	3.3	1.583	40.20	1.30	3.30

[MIL-C-38999 Insert and Contact Identification](#)

[MIL-C-38999 Insert Arrangements](#)

[MIL-C-38999 Contacts, Tooling, Wire Sizes, Sealing Plugs](#)

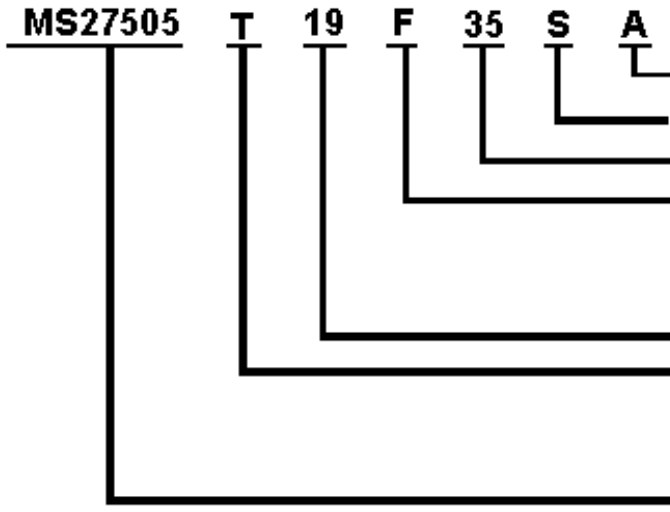
[MIL-C-38999 Series I Locksmith Keying Polarization](#)

[MIL-C-38999 Series I Panel Cut-Out Dimensions](#)

[Series I & II Strain Reliefs](#)

	A	B	C	D	E	F	G	H	J
16	1.234	.969	1.115	.20	1.215	.446	.062	.387	1.25 UNEF
18	1.328	1.062	1.236	.20	1.215	.446	.062	.387	1.176-18 UNLF
20	1.443	1.156	1.363	.20	1.275	.529	.094	.272	1.376-18 UNLF
22	1.578	1.250	1.485	.20	1.275	.529	.094	.272	1.576-18 UNLF

MILITARY PART NUMBERING SYSTEM



- Polarization** (not required for normal, A,B,C, or D for altemates)
- Contact Style** (P for Pin, S for Socket)
- Insert Arrangement** (Refer to MIL-C-38999 Insert Arrangements)
- Finish:**
 - B=** Aluminum, olive drab cadmium over nickel -65 C to +175C
 - C=** Aluminum, Anodic (Non-Conductive) -65 C to +200 C
 - F=** Aluminum, electroless nickel, -65 C to +200 C
- Shell Size:** (odd numbers only, 9 thru 25)
- Class:**
 - T=** Environmental with accessory threads and teeth (with exception of box mount version)
 - E=** Environmental (box mount versions only)
- MS Number**

For pricing and availability, please fill out our RFQ form



If you need any other information, please [E-Mail aecs@aecsinc.com](mailto:aecs@aecsinc.com)



phone (760) 430-8357 or fax (760) 430-8359

We look forward to hearing from you!



SHELL SIZE	A	B	C	D	E	F	G	H	J
8	.820	.554						.087	1/2-20 UNF
10	.954	.779						.087	5/8-24 UNEF
12	1.047	.872						.087	3/4-20 UNEF
14	1.141	.966						.087	7/8-20 UNEF
16	1.234	.969						.087	1-20 UNEF
18	1.328	1.062	1.115	.20	1.215	.446	.062	.387	1.176-18 UNLF
20	1.443	1.156	1.363	.20	1.275	.529	.094	.272	1.376-18 UNLF
22	1.578	1.250	1.485	.20	1.275	.529	.094	.272	1.576-18 UNLF