

## VFM Step-Up DC/DC Converter

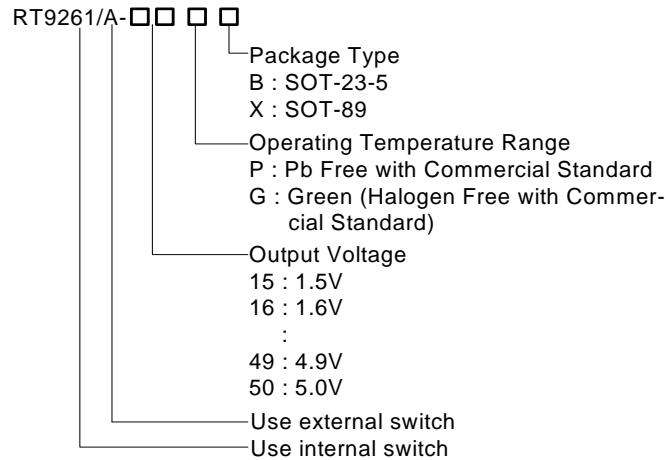
### General Description

The RT9261 Series are VFM Step-up DC/DC ICs with ultra low supply current by CMOS process and suitable for use with battery-powered instruments.

The RT9261 IC consists of an oscillator, a VFM control circuit, a driver transistor (LX switch), a reference voltage unit, an error amplifier, resistors for voltage detection, and a LX switch protection circuit. A low ripple and high efficiency step-up DC/DC converter can be constructed of this RT9261 IC with only three external components.

The RT9261A IC provides with a drive pin (EXT) for an external transistor, so that a power transistor can be externally applied. Therefore, the RT9261A IC is recommended for applications where large currents are required. EN pin enables circuit to set the standby supply current at a maximum of 0.5µA.

### Ordering Information



Note :

RichTek Pb-free and Green products are :

- ▶RoHS compliant and compatible with the current requirements of IPC/JEDEC J-STD-020.
- ▶Suitable for use in SnPb or Pb-free soldering processes.
- ▶100% matte tin (Sn) plating.

### Features

- Minimal Number of External Components ( Only an Inductor, a Diode, and a Capacitor)
- Ultra Low Input Current ( 5µA at Switch Off)
- ± 2% High Output Voltage Accuracy
- Low Ripple and Low Noise
- Low Start-up Voltage, 0.85V at 1mA
- 75% Efficiency with Low Cost Inductor
- +50 ppm/ °C Low Temperature-Drift
- SOT-89 and SOT-23-5 Small Packages
- RoHS Compliant and 100% Lead (Pb)-Free

### Applications

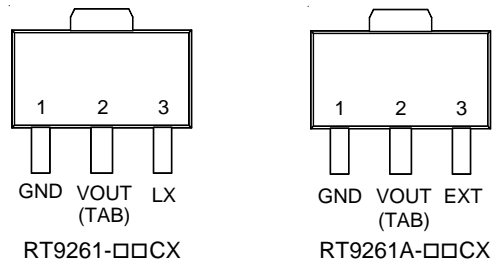
- Power source for battery-powered equipment
- Power source for cameras, camcorders, VCRs, PDAs, pagers, electronic data banks, and hand-held communication equipment
- Power source for applications, which require higher voltage than that of batteries used in the appliances

### Marking Information

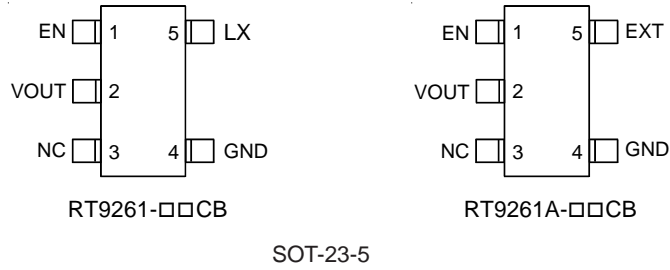
For marking information, contact our sales representative directly or through a RichTek distributor located in your area, otherwise visit our website for detail.

### Pin Configurations

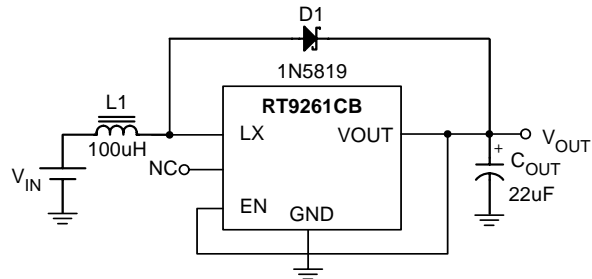
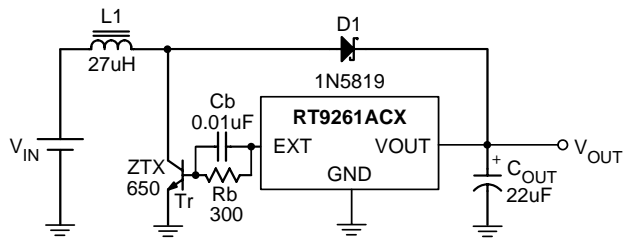
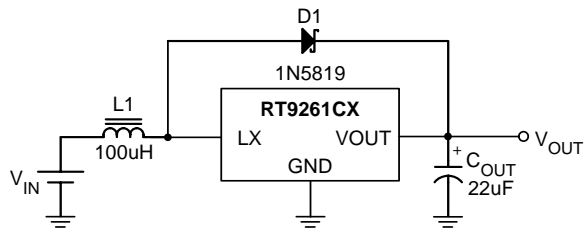
(TOP VIEW)



SOT-89



Typical Application Circuit



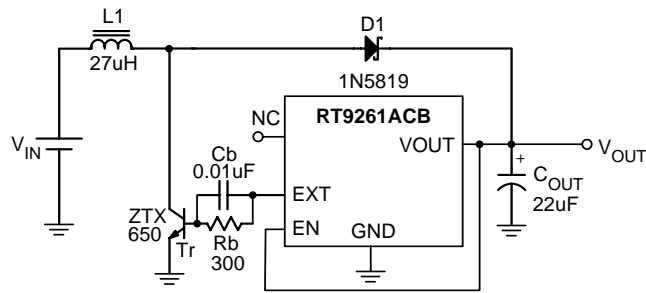


Figure 4

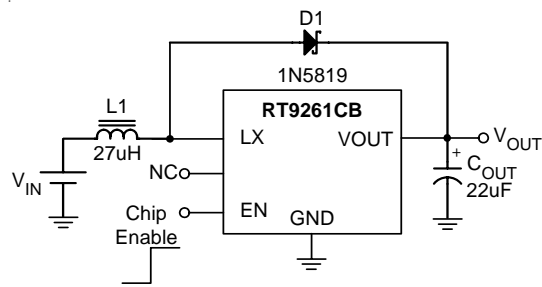
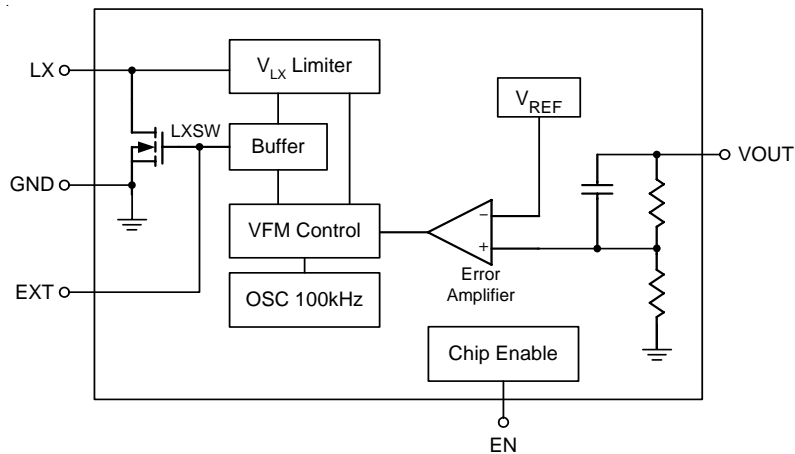


Figure 5

Functional Pin Description

Pin No.				Pin Name	Pin Function
-xxCX	A-xxCX	-xxCB	A-xxCB		
1	1	4	4	GND	Ground
2	2	2	2	VOUT	Output Voltage
3	--	5	--	LX	Pin for Switching
--	3	--	5	EXT	Drive External Device
--	--	1	1	EN	Chip Enable (Active High)
--	--	3	3	NC	No Connected

Function Block Diagram



Notes:

- (1) LX Pin..... only for 9261-□□CX and 9261-□□CB
- (2) EXT Pin.... only for 9261A-□□CX and 9261A-□□CB
- (3) EN Pin..... only for 9261-□□CB and 9261A-□□CB

**Absolute Maximum Ratings**

- Output Voltage ----- 8V
- LX Pin Voltage <sup>(1)</sup> ----- 8V
- EXT Pin Voltage <sup>(2)</sup> ----- - 0.3 to V<sub>OUT</sub> +0.3V
- EN Pin Voltage <sup>(3)</sup> ----- - 0.3 to V<sub>OUT</sub> +0.3V
- LX Pin Output Current <sup>(1)</sup> ----- 250mA
- EXT Pin Current <sup>(2)</sup> ----- ± 50mA
- Power Dissipation, P<sub>D</sub> @ T<sub>A</sub> = 25° C
  - SOT-89 ----- 0.5W
  - SOT-23-5 ----- 0.25W
- Package Thermal Resistance
  - SOT-89, θ<sub>JC</sub> ----- 100° C/W
  - SOT-89, θ<sub>JA</sub> ----- 300° C/W
  - SOT-23-5, θ<sub>JA</sub> ----- 250° C/W
- Operating Temperature Range ----- - 20 to +85° C
- Storage Temperature Range ----- 165° C
- Lead Temperature (Soldering, 10 sec.) ----- 260° C

Notes:

- (1) Applicable to RT9261- □□X and RT9261- □□B
- (2) Applicable to RT9261A- □□X and RT9261A- □□B
- (3) Applicable to RT9261- □□B and RT9261A- □□B

**Electrical Characteristics** (Refer to Figure 1)

Parameter	Symbol	Test Conditions	Min	Typ	Max	Units
Output Voltage Accuracy	ΔV <sub>OUT</sub>		-2	--	+2	%
Input Voltage	V <sub>IN</sub>		--	--	7	V
Start-up Voltage	V <sub>ST</sub>	I <sub>OUT</sub> = 1mA, V <sub>IN</sub> : 0 → 2V	--	0.85	1.0	V
Hold-on Voltage	V <sub>HO</sub>	I <sub>OUT</sub> = 1mA, V <sub>IN</sub> : 2 → 0V	0.7	--	--	V
Input Current 1	V <sub>OUT</sub> ≤ 3.5V <sup>(1)</sup>	To be measured at V <sub>IN</sub> at no load	--	15	18	μA
	3.5V < V <sub>OUT</sub> ≤ 5V <sup>(2)</sup>		--	18	24	
Input Current 2		To be measured at V <sub>OUT</sub> in switch off condition	--	5	8	μA
LX Switching Current	V <sub>OUT</sub> ≤ 3.5V <sup>(1)</sup>	I <sub>SWITCHING</sub> V <sub>LX</sub> = 0.4V	60	--	--	mA
	3.5V < V <sub>OUT</sub> ≤ 5V <sup>(2)</sup>		80	--	--	
LX Leakage Current	I <sub>LEAKAGE</sub>	V <sub>LX</sub> = 6V	--	--	0.5	μA
Maximum Oscillator	F <sub>MAX</sub>		80	120	160	kHz
Oscillator Duty Cycle	D <sub>OSC</sub>	On ( V <sub>LX</sub> " L " ) side	65	75	85	%
Efficiency			--	75	--	%
V <sub>LX</sub> Voltage Limit		L <sub>X</sub> switch on	0.65	0.8	1.0	V

Notes:

- (1) Unless otherwise provided, V<sub>IN</sub> = 1.8V, V<sub>SS</sub> = 0V, I<sub>OUT</sub> = 10mA, T<sub>OPT</sub> = 25° C, and External Circuit of Typical Application
- (2) Unless otherwise provided, V<sub>IN</sub> = 3V, V<sub>SS</sub> = 0V, I<sub>OUT</sub> = 10mA, T<sub>OPT</sub> = 25° C, and External Circuit of Typical Application

**Electrical Characteristics** (Refer to Figure 2)

Parameter	Symbol	Test Conditions	Min	Typ	Max	Units
Output Voltage Accuracy	$\Delta V_{OUT}$		-2	--	+2	%
Input Voltage	$V_{IN}$		--	--	7	V
Start-up Voltage	$V_{ST}$	$I_{OUT} = 1\text{mA}$ , $V_{IN} : 0 \rightarrow 2\text{V}$	--	0.85	1.0	V
Input Current 1	$V_{OUT} \leq 3.5\text{V}^{(1)}$	To be measured at $V_{IN}$ at no load	--	30	50	$\mu\text{A}$
	$3.5\text{V} < V_{OUT} \leq 5\text{V}^{(2)}$		--	60	90	
Input Current 2	$V_{OUT} \leq 3.5\text{V}^{(1)}$	To be measured at $V_{OUT}$ in switch off condition	--	6	10	$\mu\text{A}$
	$3.5\text{V} < V_{OUT} \leq 5\text{V}^{(2)}$		--	6	10	
EXT "H" Output Current	$V_{OUT} \leq 3.5\text{V}^{(1)}$	$V_{EXT} = V_{OUT} - 0.4\text{V}$	-1.5	--	--	mA
	$3.5\text{V} < V_{OUT} \leq 5\text{V}^{(2)}$		-2	--	--	
EXT "L" Output Current	$V_{OUT} \leq 3.5\text{V}^{(1)}$	$V_{EXT} = 0.4\text{V}$	1.5	--	--	mA
	$3.5\text{V} < V_{OUT} \leq 5\text{V}^{(2)}$		2	--	--	
Maximum Oscillator Frequency	$F_{MAX}$		80	120	160	kHz
Oscillator Duty Cycle	$D_{OSC}$	$V_{EXT}$ "H" side	65	75	85	%

Notes:

(1) Unless otherwise provided,  $V_{IN} = 1.8\text{V}$ ,  $V_{SS} = 0\text{V}$ ,  $I_{OUT} = 10\text{mA}$ ,  $T_{OPT} = 25^\circ\text{C}$ , and use External Circuit of Typical Application

(2) Unless otherwise provided,  $V_{IN} = 3\text{V}$ ,  $V_{SS} = 0\text{V}$ ,  $I_{OUT} = 10\text{mA}$ ,  $T_{OPT} = 25^\circ\text{C}$ , and External Circuit of Typical Application

**Electrical Characteristics** (Refer to Figure 3)

Parameter		Symbol	Test Conditions	Min	Typ	Max	
Output Voltage Accuracy		$\Delta V_{OUT}$		-2	--	+2	%
Input Voltage		$V_{IN}$		--	--	7	V
Start-up Voltage		$V_{ST}$	$I_{OUT} = 1mA, V_{IN} : 0 \rightarrow 2V$	--	0.85	1.0	V
Hold-on Voltage		$V_{HO}$	$I_{OUT} = 1mA, V_{IN} : 2 \rightarrow 0V$	0.7	--	--	V
Efficiency	$V_{OUT} \leq 3.5V^{(1)}$			--	75	--	%
	$3.5V < V_{OUT} \leq 5V^{(2)}$			--	85	--	
Input Current 1	$V_{OUT} \leq 3.5V^{(1)}$		To be measured at $V_{IN}$ at no load	--	15	18	$\mu A$
	$3.5V < V_{OUT} \leq 5V^{(2)}$			--	18	24	
Input Current 2	$V_{OUT} \leq 3.5V^{(1)}$		To be measured at $V_{OUT}$ in switch off condition	--	5	8	$\mu A$
	$3.5V < V_{OUT} \leq 5V^{(2)}$			--	6	10	
LX Switching Current	$V_{OUT} \leq 3.5V^{(1)}$	$I_{SWITCHING}$	$V_{LX} = 0.4V$	60	--	--	mA
	$3.5V < V_{OUT} \leq 5V^{(2)}$			80	--	--	
LX Leakage Current		$I_{LEAKAGE}$	$V_{LX} = 6V$	--	--	0.5	$\mu A$
EN "H" Level			$V_{IN} = V_{OUT} \times 0.9$	$0.4 \times V_{OUT}$	--	--	V
EN "L" Level			$V_{IN} = V_{OUT} \times 0.9$	--	--	0.2	V
EN "H" Input Current			$EN = V_{OUT}$	--	--	0.5	$\mu A$
EN "L" Input Current			$EN = 0V$	-0.5	--	--	$\mu A$
Maximum Oscillator Frequency		$F_{MAX}$		80	120	160	kHz
Oscillator Duty Cycle		$D_{OSC}$	On ( $V_{LX}$ "L" ) side	65	75	85	%
$V_{LX}$ Voltage Limit			LX switch on	0.65	0.8	1.0	V

Notes:

(1)Unless otherwise provided,  $V_{IN} = 1.8V, V_{SS} = 0V, I_{OUT} = 10mA, T_{OPT} = 25^{\circ}C$ , and use External Circuit of Typical Application

(2)Unless otherwise provided,  $V_{IN} = 3V, V_{SS} = 0V, I_{OUT} = 10mA, T_{OPT} = 25^{\circ}C$ , and External Circuit of Typical Application

**Electrical Characteristics** (Refer to Figure 4)

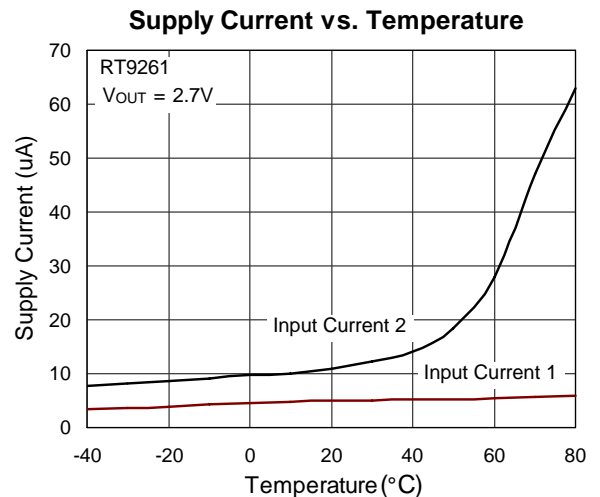
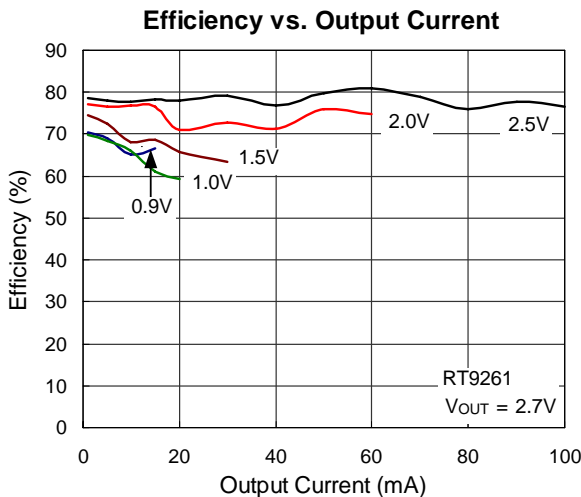
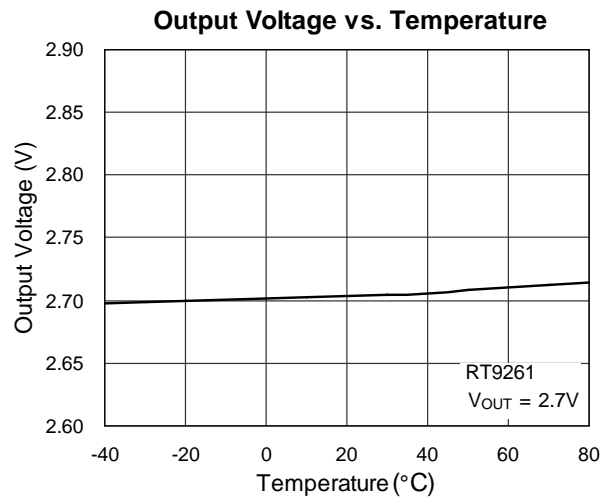
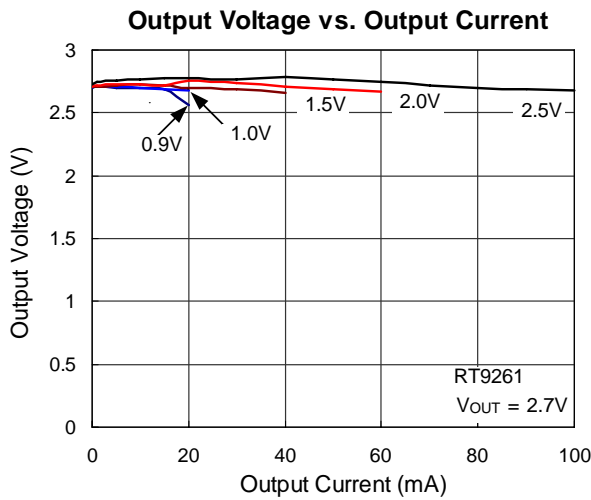
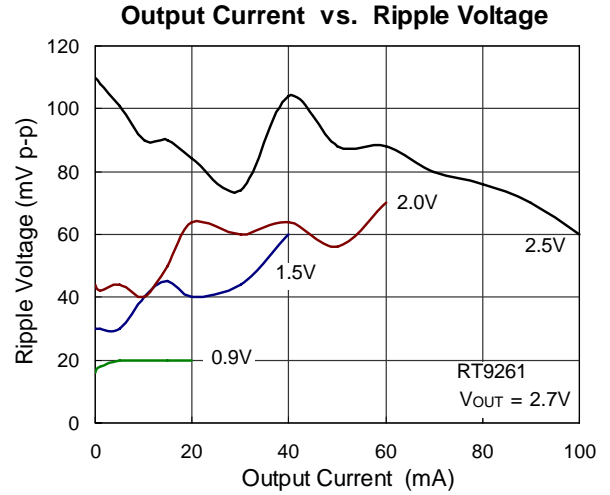
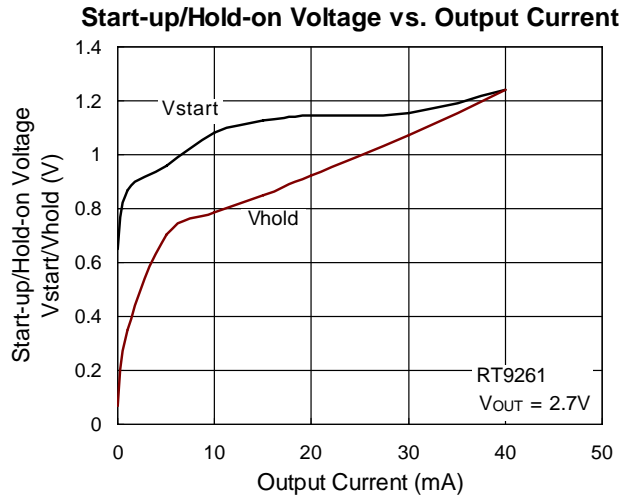
Parameter	Symbol	Test Conditions	Min	Typ	Max	Units	
Output Voltage Accuracy	$\Delta V_{OUT}$		-2	--	+2	%	
Input Voltage	$V_{IN}$		--	--	7	V	
Start-up Voltage	$V_{ST}$	$I_{OUT} = 1mA, V_{IN}: 0 \rightarrow 2V$	--	0.85	1.0	V	
Efficiency	$V_{OUT} \leq 3.5V^{(1)}$			--	75	--	%
	$3.5V < V_{OUT} \leq 5V^{(2)}$			--	85	--	
Input Current 1	$V_{OUT} \leq 3.5V^{(1)}$	To be measured at $V_{IN}$ at no load		--	30	50	$\mu A$
	$3.5V < V_{OUT} \leq 5V^{(2)}$			--	60	90	
Input Current 2	$V_{OUT} \leq 3.5V^{(1)}$	To be measured at $V_{OUT}$ in switch off condition		--	6	10	$\mu A$
	$3.5V < V_{OUT} \leq 5V^{(2)}$			--	6	10	
EXT "H" Output Current	$V_{OUT} \leq 3.5V^{(1)}$	$V_{EXT} = V_{OUT} - 0.4V$		-1.5	--	--	mA
	$3.5V < V_{OUT} \leq 5V^{(2)}$			-2	--	--	
EXT "L" Output Current	$V_{OUT} \leq 3.5V^{(1)}$	$V_{EXT} = 0.4V$		1.5	--	--	mA
	$3.5V < V_{OUT} \leq 5V^{(2)}$			2	--	--	
EN "H" Level		$V_{IN} = V_{OUT} \times 0.9$	$0.4 \times V_{OUT}$	--	--	V	
EN "L" Level		$V_{IN} = V_{OUT} \times 0.9$	--	--	0.2	V	
EN "H" Input Current		$EN = V_{OUT}$	--	--	0.5	$\mu A$	
EN "L" Input Current		$EN = 0V$	-0.5	--	--	$\mu A$	
Maximum Oscillator Frequency	$F_{MAX}$		80	120	160	kHz	
Oscillator Duty Cycle	$D_{OSC}$	On ( $V_{LX}$ "L") side	65	75	85	%	
$V_{LX}$ Voltage Limit		LX switch on	0.65	0.8	1.0	V	

Notes:

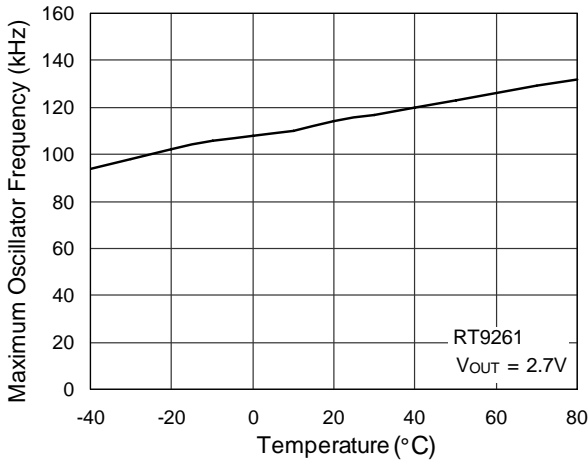
(1)Unless otherwise provided,  $V_{IN} = 1.8V$ ,  $V_{SS} = 0V$ ,  $I_{OUT} = 10mA$ ,  $T_{OPT} = 25^{\circ}C$ , and use External Circuit of Typical Application(2)Unless otherwise provided,  $V_{IN} = 3V$ ,  $V_{SS} = 0V$ ,  $I_{OUT} = 10mA$ ,  $T_{OPT}$



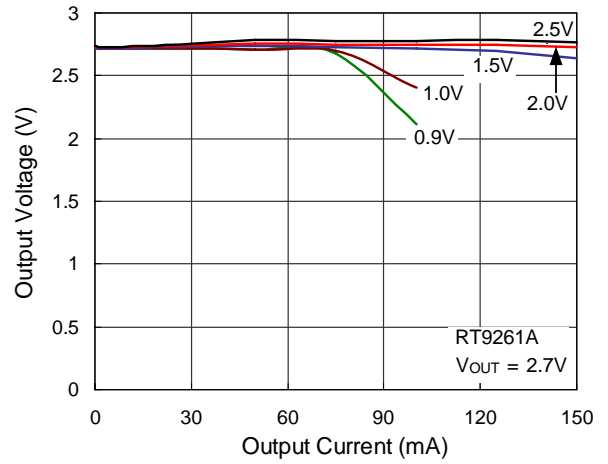
### Typical Operating Characteristics



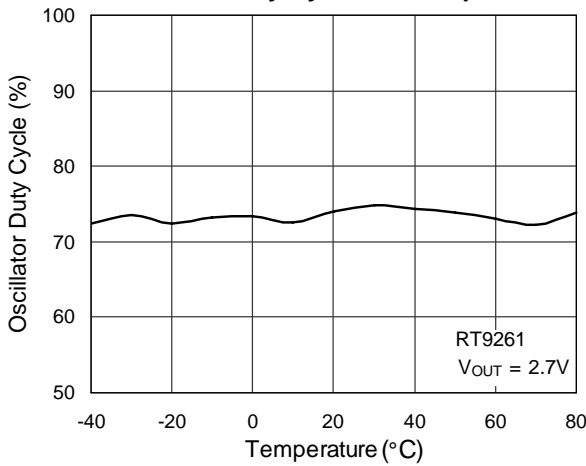
Maximum Oscillator Frequency vs. Temperature



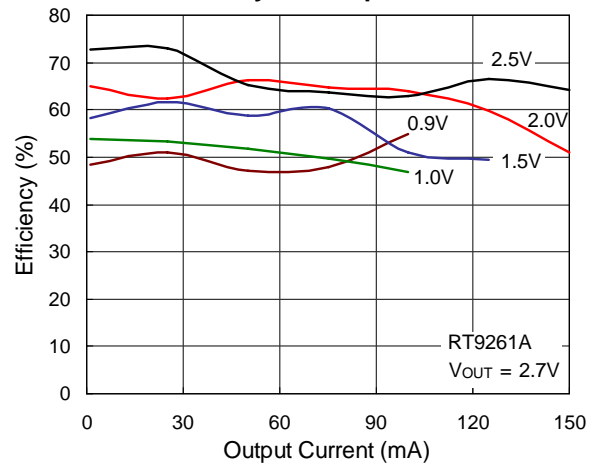
Output Voltage vs. Output Current



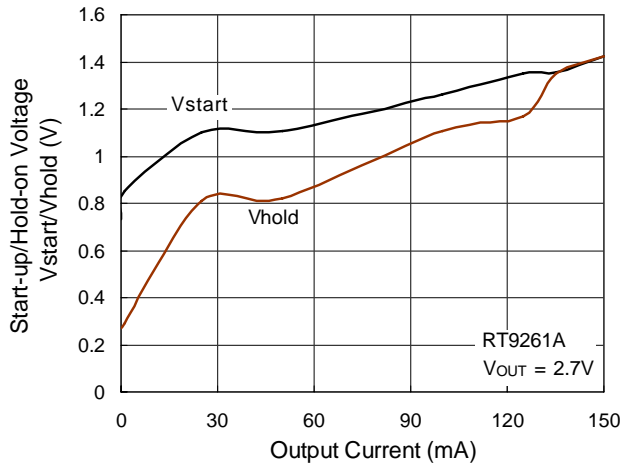
Oscillator Duty Cycle vs. Temperature



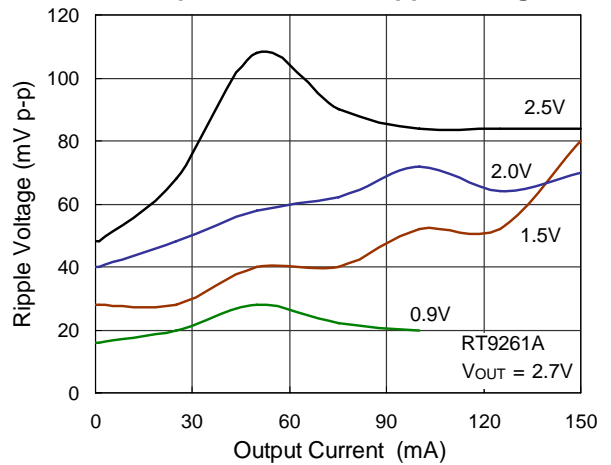
Efficiency vs. Output Current



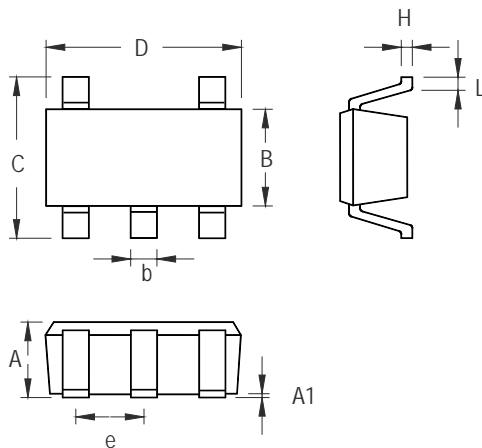
Start-up/Hold-on Voltage vs. Output Current



Output Current vs. Ripple Voltage

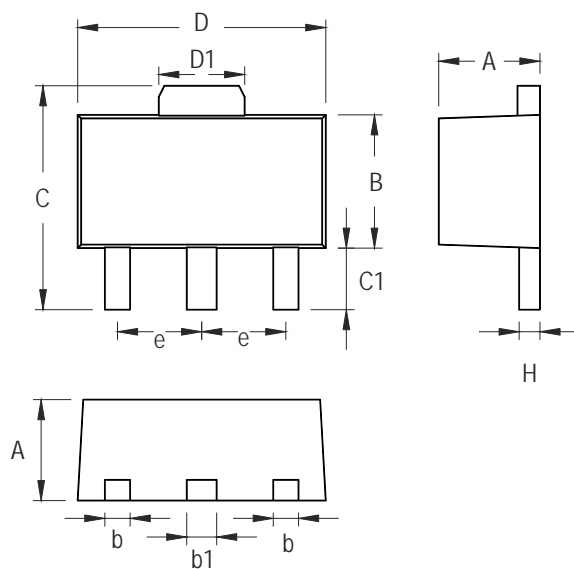


**Outline Dimension**



Symbol	Dimensions In Millimeters		Dimensions In Inches	
	Min	Max	Min	Max
A	0.889	1.295	0.035	0.051
A1	0.000	0.152	0.000	0.006
B	1.397	1.803	0.055	0.071
b	0.356	0.559	0.014	0.022
C	2.591	2.997	0.102	0.118
D	2.692	3.099	0.106	0.122
e	0.838	1.041	0.033	0.041
H	0.080	0.254	0.003	0.010
L	0.300	0.610	0.012	0.024

**SOT-23-5 Surface Mount Package**



Symbol	Dimensions In Millimeters		Dimensions In Inches	
	Min	Max	Min	Max
A	1.397	1.600	0.055	0.063
b	0.356	0.483	0.014	0.019
B	2.388	2.591	0.094	0.102
b1	0.406	0.533	0.016	0.021
C	3.937	4.242	0.155	0.167
C1	0.787	1.194	0.031	0.047
D	4.394	4.597	0.173	0.181
D1	1.397	1.753	0.055	0.069
e	1.448	1.549	0.057	0.061
H	0.356	0.432	0.014	0.017

**3-Lead SOT-89 Surface Mount**

### Richtek Technology Corporation

Headquarter

5F, No. 20, Taiyuen Street, Chupei City

Hsinchu, Taiwan, R.O.C.

Tel: (8863)5526789 Fax: (8863)5526611

### Richtek Technology Corporation

Taipei Office (Marketing)

8F, No. 137, Lane 235, Paochiao Road, Hsintien City

Taipei County, Taiwan, R.O.C.

Tel: (8862)89191466 Fax: (8862)89191465

Email: [marketing@richtek.com](mailto:marketing@richtek.com)