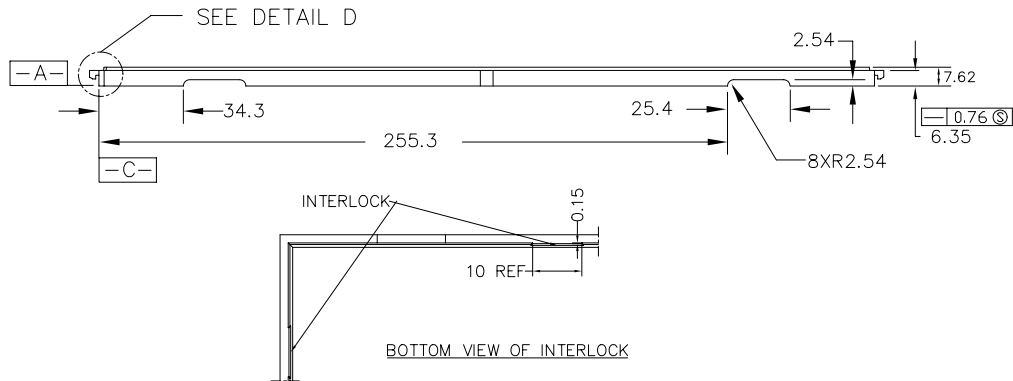
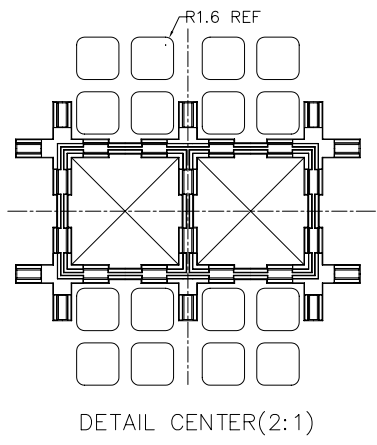
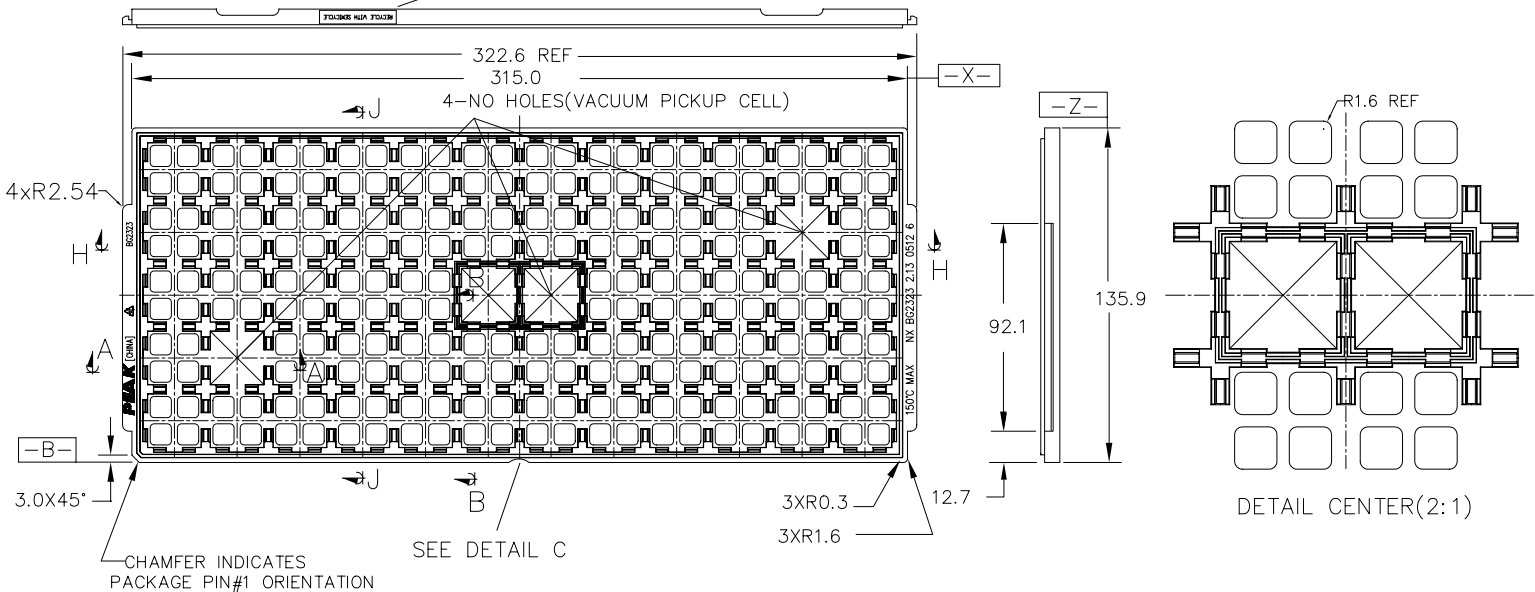


PEAK

RECYCLE WITH SEMICYCLE



- NOTES :
1. MATERIAL - PP6.
  2. ALL DIMENSIONS ARE IN MILLIMETERS.
  3. TOLERANCES - X.X=±0.25  
- X.XX=±0.13  
UNLESS OTHERWISE SPECIFIED.
  4. ESD - SURFACE RESISTIVITY  
- 10<sup>5</sup> TO 10<sup>11</sup> OHMS/SQ.
  5. FOR PACKAGE - BG2323
  6. PART NO. : NX BG2323 2.13 0512 6  
(PLEASE INDICATE ON PURCHASE ORDER).

BOTTOM VIEW OF INTERLOCK

	<b>PEAK</b> PEAK PLASTIC & METAL PRODUCTS INT'L LTD.
	CUSTOMER : <b>PEAK</b>
	TITLE : NX BG2323 2.13 0512 6
	DWG NO.: NX BG2323 2.13 0512 6

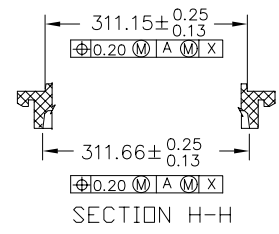
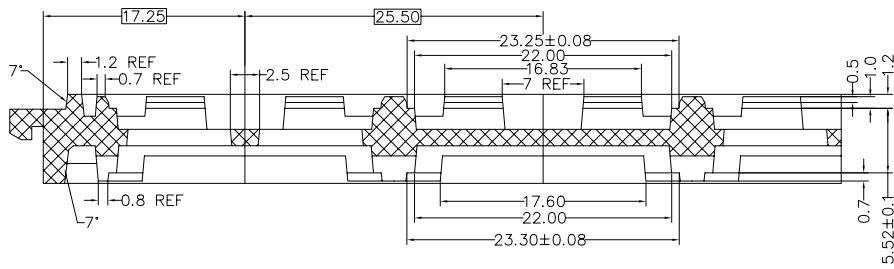
REV.NO.	ECN #	DESCRIPTION	DATE
0		RELEASED FOR PRODUCTION	21 AUG 01

THIS DOCUMENT CONTAINS INFORMATION PROPRIETARY TO PEAK PLASTIC & METAL PRODUCTS INTERNATIONAL LIMITED. REPRODUCTION, DISCLOSURE OR USE OF THIS DOCUMENT IS EXPRESSLY PROHIBITED EXCEPT IF OTHERWISE AGREED UPON IN WRITING.

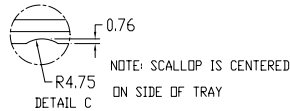
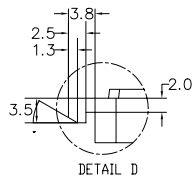
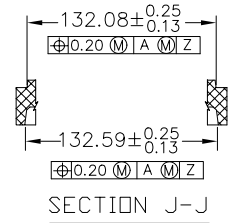
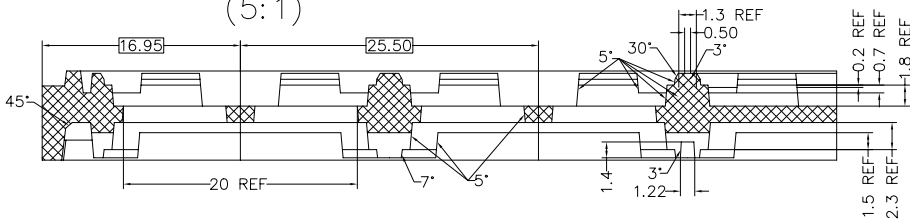
DRAWN BY : BUSH	PAGE 1 OF 2
CHECKED BY :	DATE : 21 AUG 01
APPROVED BY :	DATE : 21 AUG 01
APPROVED BY :	DATE : 21 AUG 01
DO NOT SCALE DRAWING	CODE : CSA07735

**PEAK**

SECTION A-A  
(5:1)



SECTION B-B  
(5:1)



REV.NO.	ECN #	DESCRIPTION	DATE
0		RELEASED FOR PRODUCTION	21 AUG 01

THIS DOCUMENT CONTAINS INFORMATION PROPRIETARY TO PEAK PLASTIC & METAL PRODUCTS INTERNATIONAL LIMITED. REPRODUCTION, DISCLOSURE OR USE OF THIS DOCUMENT IS EXPRESSLY PROHIBITED EXCEPT IF OTHERWISE AGREED UPON IN WRITING.

DRAWN BY :	BUSH	PAGE 2 OF 2
CHECKED BY :		DATE : 21 AUG 01
APPROVED BY :		DATE : 21 AUG 01
APPROVED BY :		DATE : 21 AUG 01
DO NOT SCALE DRAWING		CODE : CSA07735

**PEAK** PEAK PLASTIC & METAL PRODUCTS INT'L LTD.

CUSTOMER :	<b>PEAK</b>
TITLE :	NX BG2323 2.13 0512 6
DWG NO.:	NX BG2323 2.13 0512 6
REV. 0	