

L-BAND VCO LOCAL BUFFER AMPLIFIER

DESCRIPTION

The μ PG2304TK is GaAs HBT MMIC for VCO local buffer amplifier which were developed for mobile phone and another L-band application.

This device realizes excellent performance by using InGaP HBT. This device is housed in a 6-pin lead-less minimold package (1511). And this package is able to high-density surface mounting.

FEATURES

- Operation frequency : f_{opt1} = 679 to 768 MHz (720 MHz TYP.)
: f_{opt2} = 1 270 to 1 371 MHz (1 320 MHz TYP.)
- Supply voltage : V_{CC} = 2.7 to 2.9 V (2.8 V TYP.)
- Low current consumption : I_{CC} = 3.5 mA TYP. @ V_{CC} = 2.8 V
- Excellent isolation : ISL₁ = 40 dB TYP. @ f_{opt1} = 720 MHz, P_{in} = -4 dBm, V_{CC} = 2.8 V
: ISL₂ = 35 dB TYP. @ f_{opt2} = 1 320 MHz, P_{in} = -4 dBm, V_{CC} = 2.8 V
- High-density surface mounting : 6-pin lead-less minimold package (1.5 × 1.1 × 0.55 mm)

APPLICATION

- VCO Buffer Amplifier etc.

ORDERING INFORMATION

Part Number	Package	Marking	Supplying Form
μ PG2304TK-E2	6-pin lead-less minimold (1511)	G3F	<ul style="list-style-type: none"> • Embossed tape 8 mm wide • Pin 1, 6 face the perforation side of the tape • Qty 5 kpcs/reel

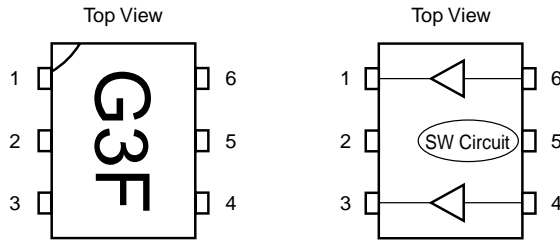
Remark To order evaluation samples, contact your nearby sales office.

Part number for sample order: μ PG2304TK

Caution Observe precautions when handling because these devices are sensitive to electrostatic discharge.

The information in this document is subject to change without notice. Before using this document, please confirm that this is the latest version.
Not all devices/types available in every country. Please check with local NEC Compound Semiconductor Devices representative for availability and additional information.

PIN CONNECTIONS AND INTERNAL BLOCK DIAGRAM



Pin No.	Pin Name
1	OUTPUT2 (1.5 GHz) / V _{CC}
2	GND
3	OUTPUT1 (800 MHz) / V _{CC}
4	INPUT1 (800 MHz)
5	N.C.
6	INPUT2 (1.5 GHz) / V _{SW}

TRUTH TABLE

	V _{SW} = 0 V	V _{SW} = 2.8 V
INPUT1 - OUTPUT1	High	Low
INPUT2 - OUTPUT2	Low	High

ABSOLUTE MAXIMUM RATINGS (T_A = +25°C, unless otherwise specified)

Parameter	Symbol	Ratings	Unit
Supply Voltage	V _{CC}	4.0	V
Switch Voltage	V _{SW}	4.0	V
Input Power	P _{in}	+10	dBm
Power Dissipation	P _D	125 ^{Note}	mW
Operating Ambient Temperature	T _A	-30 to +85	°C
Storage Temperature	T _{stg}	-65 to +150	°C
Circuit Current	I _{CC}	15	mA
Control Current	I _{SW}	0.3	mA

Note Mounted on double-sided copper-clad 50 × 50 × 1.6 mm epoxy glass PWB, T_A = +85°C

RECOMMENDED OPERATING RANGE (T_A = +25°C)

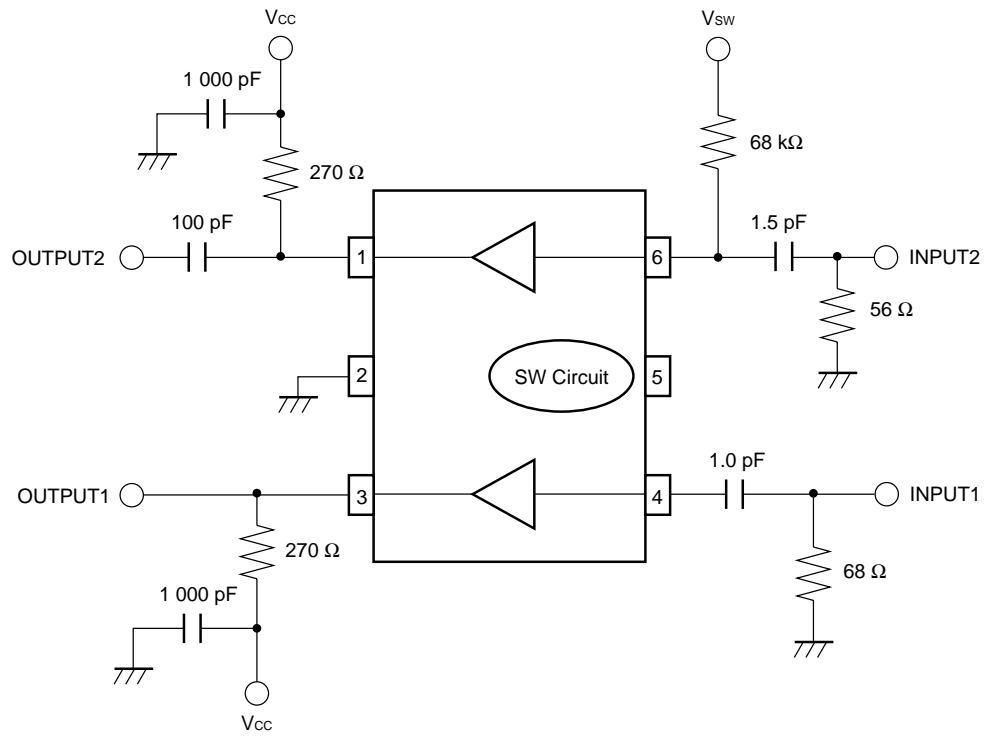
Parameter	Symbol	MIN.	TYP.	MAX.	Unit
Operating Frequency 1	f _{opt1}	679	720	768	MHz
Operating Frequency 2	f _{opt2}	1 270	1 320	1 371	MHz
Supply Voltage	V _{CC}	2.7	2.8	2.9	V
Switch Voltage 1	V _{SW1}	2.7	2.8	2.9	V
Switch Voltage 2	V _{SW2}	0	-	0.5	V

ELECTRICAL CHARACTERISTICS

(T_A = +25°C, V_{CC} = 2.8 V, P_{in} = -4 dBm, External input and output matching, unless otherwise specified)

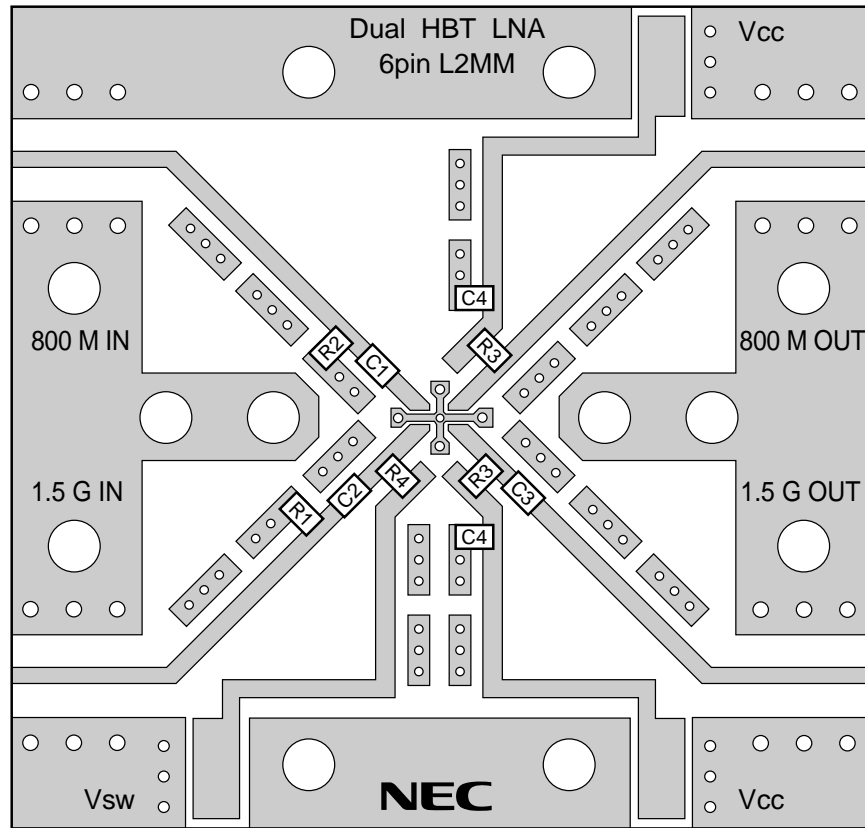
Parameter	Symbol	Test Conditions	MIN.	TYP.	MAX.	Unit
Circuit Current 1	I _{CC1}	V _{SW} = 0 V	-	3.5	4.0	mA
Circuit Current 2	I _{CC2}	V _{SW} = 2.8 V	-	3.5	4.0	mA
Power Gain 1	G _{P1}	V _{SW} = 0 V, f = 720 MHz	-2	0	+2	dB
Power Gain 2	G _{P2}	V _{SW} = 2.8 V, f = 1 320 MHz	-2	0	+2	dB
Input Return Loss 1	RL _{in1}	V _{SW} = 0 V, f = 720 MHz	-	10	-	dB
Input Return Loss 2	RL _{in2}	V _{SW} = 2.8 V, f = 1 320 MHz	-	10	-	dB
Output Return Loss 1	RL _{out1}	V _{SW} = 0 V, f = 720 MHz	-	5	-	dB
Output Return Loss 2	RL _{out2}	V _{SW} = 2.8 V, f = 1 320 MHz	-	5	-	dB
Isolation 1	ISL ₁	V _{SW} = 0 V, f = 720 MHz	30	40	-	dB
Isolation 2	ISL ₂	V _{SW} = 2.8 V, f = 1 320 MHz	30	35	-	dB
Noise Figure 1	NF ₁	V _{SW} = 0 V, f = 720 MHz	-	8.5	9.5	dB
Noise Figure 2	NF ₂	V _{SW} = 2.8 V, f = 1 320 MHz	-	7.0	8.0	dB

EVALUATION CIRCUIT ($V_{CC} = 2.8\text{ V}$, $P_{in} = -4\text{ dBm}$)



The application circuits and their parameters are for reference only and are not intended for use in actual design-ins.

ILLUSTRATION OF THE TEST CIRCUIT ASSEMBLED ON EVALUATION BOARD



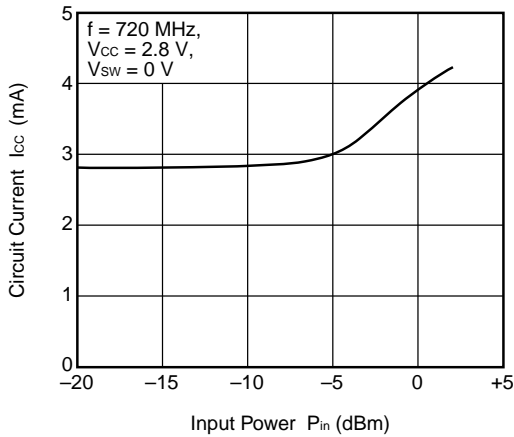
USING THE NEC EVALUATION BOARD

Symbol	Values	Part Number	Maker
R1	56 Ω	RR0816P-560-D	Susumu
R2	68 Ω	RR0816P-680-D	Susumu
R3	270 Ω	RR0816P-271-D	Susumu
R4	68 kΩ	RR0816P-683-D	Susumu
C1	1 pF	GRM39CH010C50PB	muRata
C2	1.5 pF	GRM39CH1R5C50PB	muRata
C3	100 pF	GRM39CH101J50PB	muRata
C4	1 000 pF	GRM39CH102J25PB	muRata

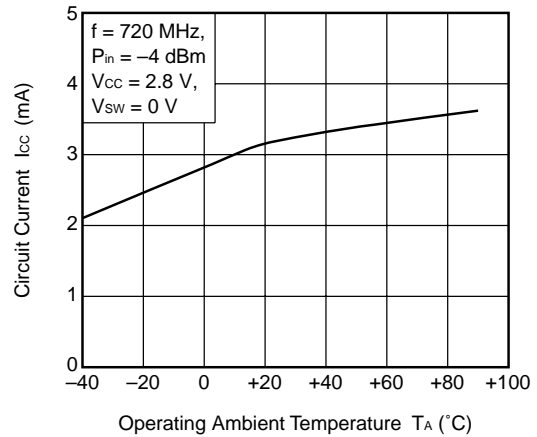
TYPICAL CHARACTERISTICS (T_A = +25°C, unless otherwise specified)

INPUT1 - OUTPUT1

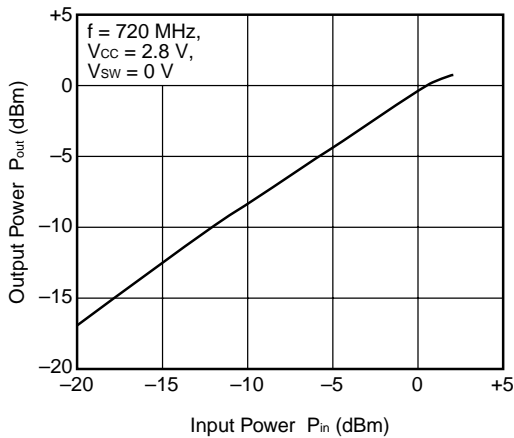
CIRCUIT CURRENT vs. INPUT POWER



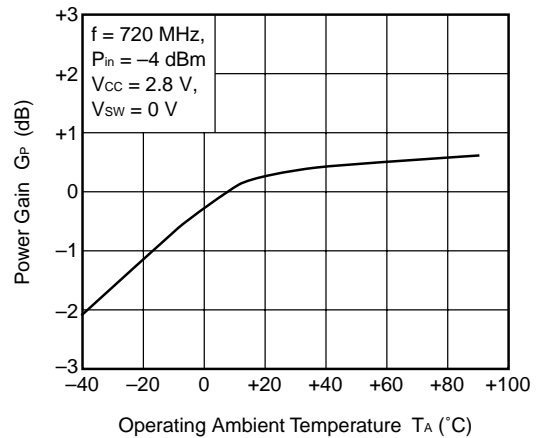
CIRCUIT CURRENT vs. OPERATING AMBIENT TEMPERATURE



OUTPUT POWER vs. INPUT POWER



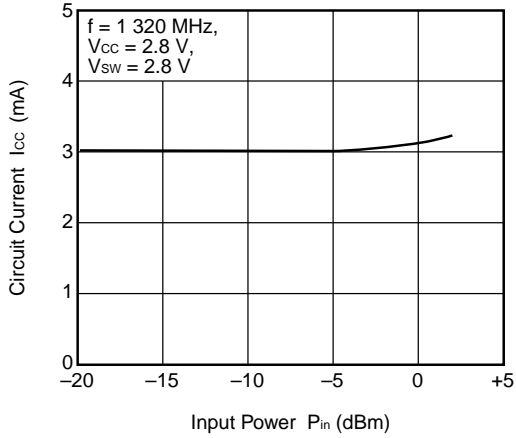
POWER GAIN vs. OPERATING AMBIENT TEMPERATURE



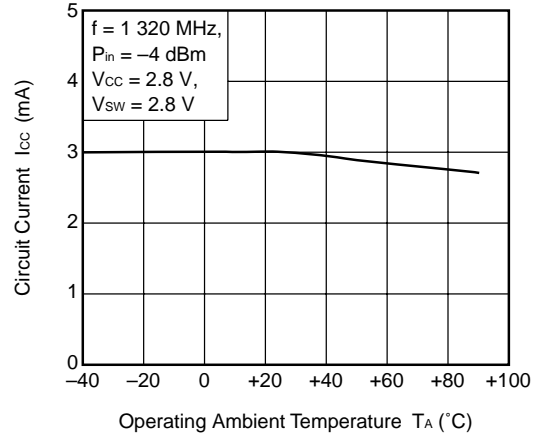
Remark The graphs indicate nominal characteristics.

INPUT2 - OUTPUT2

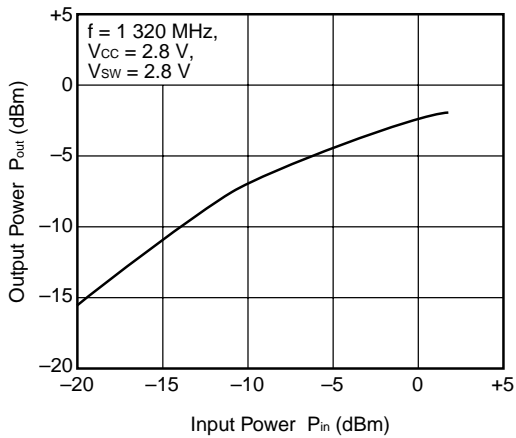
CIRCUIT CURRENT vs. INPUT POWER



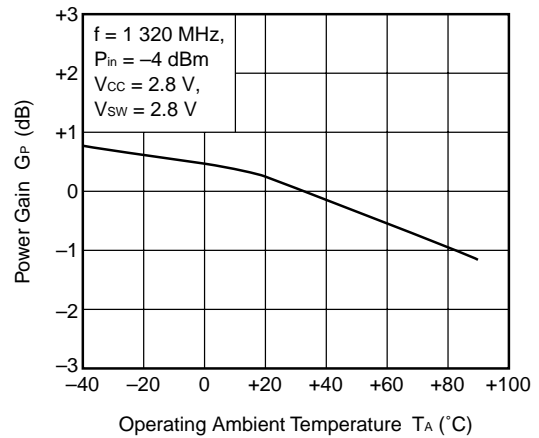
CIRCUIT CURRENT vs. OPERATING AMBIENT TEMPERATURE



OUTPUT POWER vs. INPUT POWER



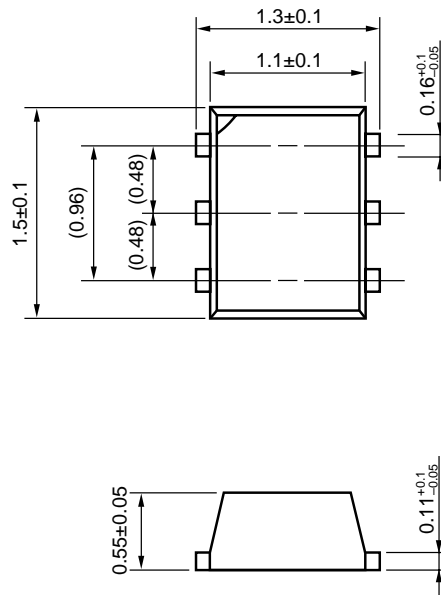
POWER GAIN vs. OPERATING AMBIENT TEMPERATURE



Remark The graphs indicate nominal characteristics.

PACKAGE DIMENSIONS

6-PIN LEAD-LESS MINIMOLD (1511) (UNIT: mm)



Remark () : Reference value

RECOMMENDED SOLDERING CONDITIONS

This product should be soldered and mounted under the following recommended conditions. For soldering methods and conditions other than those recommended below, contact your nearby sales office.

Soldering Method	Soldering Conditions	Condition Symbol
Infrared Reflow	Peak temperature (package surface temperature) : 260°C or below Time at peak temperature : 10 seconds or less Time at temperature of 220°C or higher : 60 seconds or less Preheating time at 120 to 180°C : 120±30 seconds Maximum number of reflow processes : 3 times Maximum chlorine content of rosin flux (% mass) : 0.2%(Wt.) or below	IR260
VPS	Peak temperature (package surface temperature) : 215°C or below Time at temperature of 200°C or higher : 25 to 40 seconds Preheating time at 120 to 150°C : 30 to 60 seconds Maximum number of reflow processes : 3 times Maximum chlorine content of rosin flux (% mass) : 0.2%(Wt.) or below	VP215
Wave Soldering	Peak temperature (molten solder temperature) : 260°C or below Time at peak temperature : 10 seconds or less Preheating temperature (package surface temperature) : 120°C or below Maximum number of flow processes : 1 time Maximum chlorine content of rosin flux (% mass) : 0.2%(Wt.) or below	WS260
Partial Heating	Peak temperature (pin temperature) : 350°C or below Soldering time (per side of device) : 3 seconds or less Maximum chlorine content of rosin flux (% mass) : 0.2%(Wt.) or below	HS350

Caution Do not use different soldering methods together (except for partial heating).

- **The information in this document is current as of May, 2002. The information is subject to change without notice. For actual design-in, refer to the latest publications of NEC's data sheets or data books, etc., for the most up-to-date specifications of NEC semiconductor products. Not all products and/or types are available in every country. Please check with an NEC sales representative for availability and additional information.**
- No part of this document may be copied or reproduced in any form or by any means without prior written consent of NEC. NEC assumes no responsibility for any errors that may appear in this document.
- NEC does not assume any liability for infringement of patents, copyrights or other intellectual property rights of third parties by or arising from the use of NEC semiconductor products listed in this document or any other liability arising from the use of such products. No license, express, implied or otherwise, is granted under any patents, copyrights or other intellectual property rights of NEC or others.
- Descriptions of circuits, software and other related information in this document are provided for illustrative purposes in semiconductor product operation and application examples. The incorporation of these circuits, software and information in the design of customer's equipment shall be done under the full responsibility of customer. NEC assumes no responsibility for any losses incurred by customers or third parties arising from the use of these circuits, software and information.
- While NEC endeavours to enhance the quality, reliability and safety of NEC semiconductor products, customers agree and acknowledge that the possibility of defects thereof cannot be eliminated entirely. To minimize risks of damage to property or injury (including death) to persons arising from defects in NEC semiconductor products, customers must incorporate sufficient safety measures in their design, such as redundancy, fire-containment, and anti-failure features.
- NEC semiconductor products are classified into the following three quality grades:
"Standard", "Special" and "Specific". The "Specific" quality grade applies only to semiconductor products developed based on a customer-designated "quality assurance program" for a specific application. The recommended applications of a semiconductor product depend on its quality grade, as indicated below. Customers must check the quality grade of each semiconductor product before using it in a particular application.
"Standard": Computers, office equipment, communications equipment, test and measurement equipment, audio and visual equipment, home electronic appliances, machine tools, personal electronic equipment and industrial robots
"Special": Transportation equipment (automobiles, trains, ships, etc.), traffic control systems, anti-disaster systems, anti-crime systems, safety equipment and medical equipment (not specifically designed for life support)
"Specific": Aircraft, aerospace equipment, submersible repeaters, nuclear reactor control systems, life support systems and medical equipment for life support, etc.
The quality grade of NEC semiconductor products is "Standard" unless otherwise expressly specified in NEC's data sheets or data books, etc. If customers wish to use NEC semiconductor products in applications not intended by NEC, they must contact an NEC sales representative in advance to determine NEC's willingness to support a given application.
(Note)
(1) "NEC" as used in this statement means NEC Corporation, NEC Compound Semiconductor Devices, Ltd. and also includes its majority-owned subsidiaries.
(2) "NEC semiconductor products" means any semiconductor product developed or manufactured by or for NEC (as defined above).

M8E 00.4-0110