

# New Jersey Semi-Conductor Products, Inc.

20 STERN AVE.  
 SPRINGFIELD, NEW JERSEY 07081  
 U.S.A.

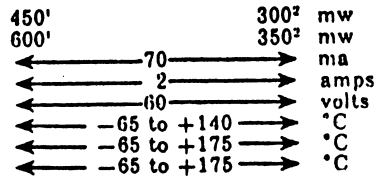
TELEPHONE: (973) 376-2922  
 (212) 227-6005  
 FAX: (973) 376-8960

## absolute maximum ratings\*

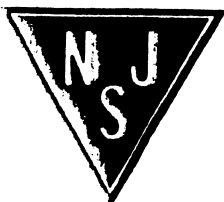
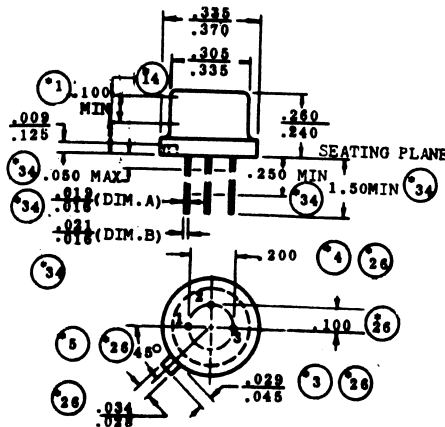
Total RMS Power Dissipation—Unstabilized<sup>1</sup>  
 Total RMS Power Dissipation—Stabilized<sup>2</sup>  
 RMS Emitter Current  
 Peak Emitter Current<sup>3</sup> (T<sub>j</sub> = 150°C)  
 Emitter Reverse Voltage (T<sub>j</sub> = 150°C)  
 Operating Temperature Range  
 Operating Temperature Range—Stabilized<sup>4</sup>  
 Storage Temperature Range

2N489, A, B  
 THROUGH  
 2N494, A, B

2N2417, A, B  
 THROUGH  
 2N2422, A, B



2N490A	2N2418A	.51	.62	6.2	9.1	6.8	22	4	2	20		12	8	3
2N490B	2N2418B	.51	.62	6.2	9.1	6.8	22	4	2	20	0.2	6	8	3
2N491	2N2419	.56	.68	4.7	6.8	6.8	22	5	2	20		12	8	
2N491A	2N2419A	.56	.68	4.7	6.8	6.8	22	4.3	2	20		12	8	3
2N491B	2N2419B	.56	.68	4.7	6.8	6.8	22	4.3	2	20	0.2	6	8	3
2N492	2N2420	.56	.68	6.2	9.1	6.8	22	5	2	20		12	8	
2N492A	2N2420A	.56	.68	6.2	9.1	6.8	22	4.3	2	20		12	8	3
2N492B	2N2420B	.56	.68	6.2	9.1	6.8	22	4.3	2	20	0.2	6	8	3
2N493	2N2421	.62	.75	4.7	6.8	6.8	22	5	2	20		12	8	
2N493A	2N2421A	.62	.75	4.7	6.8	6.8	22	4.6	2	20		12	8	3
2N493B	2N2421B	.62	.75	4.7	6.8	6.8	22	4.6	2	20	0.2	6	8	3
2N494	2N2422	.62	.75	6.2	9.1	6.8	22	5	2	20		12	8	
2N494A	2N2422A	.62	.75	6.2	9.1	6.8	22	4.6	2	20		12	8	3
2N494B	2N2422B	.62	.75	6.2	9.1	6.8	22	4.6	2	20	0.2	6	8	3



NJ Semi-Conductors reserves the right to change test conditions, parameter limits and package dimensions without notice. Information furnished by NJ Semi-Conductors is believed to be both accurate and reliable at the time of going to press. However, NJ Semi-Conductors assumes no responsibility for any errors or omissions discovered in its use. NJ Semi-Conductors encourages customers to verify that datasheets are current before placing orders.