



Frontier Electronics Corp.

667 E. COCHRAN STREET, SIMI VALLEY, CA 93065

TEL: (805) 522-9998 FAX: (805) 522-9989

E-mail: frontiersales@frontierusa.com

Web: <http://www.frontierusa.com>

50A HIGH CURRENT SILICON BRIDGE RECTIFIERS

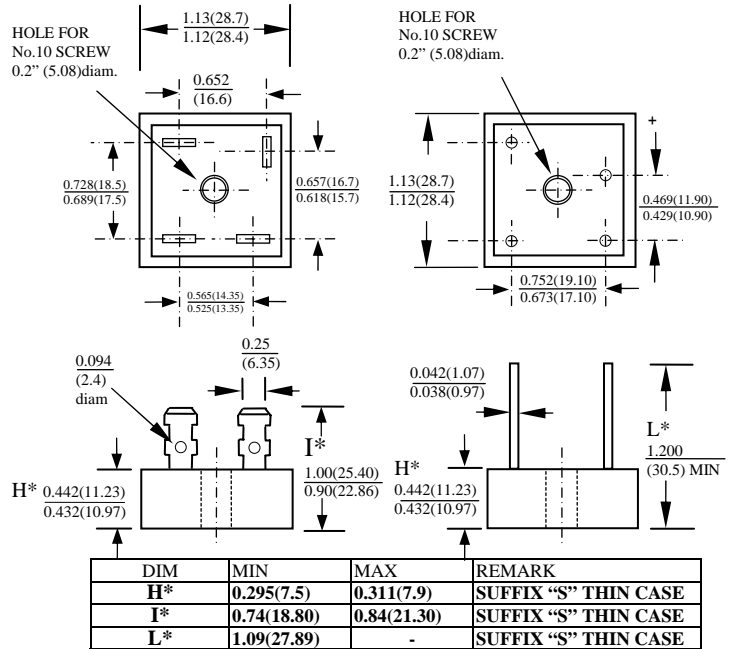
BP50-005 THRU BP50-10

FEATURES

- CURRENT RATING 50A
- REVERSE VOLTAGE RATING UP TO 1000V
- TYPICAL IR LESS THAN 1 μ A
- HIGH TEMPERATURE SOLDERING GUARANTEED:
260°C /10 SECOND

MECHANICAL DATA

- CASE: METAL HEAT SINK CASE, ELECTRICALLY INSULATED
DIMENSIONS IN INCHES AND (MILLIMETERS)
- TERMINALS: UNIVERSAL .25" (6.3mm) FAST ON
- MOUNTING METHOD: BOLT DOWN ON HEAT SINK WITH
SILICON THERMAL COMPOUND BETWEEN BRIDGE AND
MOUNTING SURFACE FOR MAXIMUM HEAT TRANSFER
EFFICIENCY
- WEIGHT : 20 GRAMS



MAXIMUM RATINGS AND ELECTRICAL CHARACTERISTICS RATINGS AT 25°C AMBIENT TEMPERATURE UNLESS OTHERWISE SPECIFIED SINGLE PHASE, HALF WAVE, 60 HZ, RESISTIVE OR INDUCTIVE LOAD. FOR CAPACITIVE LOAD, DERATE CURRENT BY 20%

RATINGS	SYMBOL	BP50-005	BP50-01	BP50-02	BP50-04	BP50-06	BP50-08	BP50-10	UNITS
MAXIMUM RECURRENT PEAK REVERSE VOLTAGE	V_{RRM}	50	100	200	400	600	800	1000	V
MAXIMUM RMS VOLTAGE	V_{RMS}	35	70	140	280	420	560	700	V
MAXIMUM DC BLOCKING VOLTAGE	V_{DC}	50	100	200	400	600	800	1000	V
MAXIMUM AVERAGE FORWARD RECTIFIED OUTPUT CURRENT AT $T_C=55^\circ C$	I_o	50.0							A
PEAK FORWARD SURGE CURRENT SINGLE SINE-WAVE SUPERIMPOSED ON RATED LOAD	I_{FSM}	550							A
STORAGE TEMPERATURE RANGE	T_{STG}	- 55 TO + 175							°C
OPERATING TEMPERATURE RANGE	T_{OP}	- 55 TO + 175							°C

ELECTRICAL CHARACTERISTICS ($A_T T_A = 25^\circ C$ UNLESS OTHERWISE NOTED)

CHARACTERISTICS	SYMBOL	BP50-005	BP50-01	BP50-02	BP50-04	BP50-06	BP50-08	BP50-10	UNITS
MAXIMUM INSTANTANEOUS FORWARD VOLTAGE PER BRIDGE ELEMENT AT SPECIFIED CURRENT	V_F	1.1							V
MAXIMUM REVERSE DC CURRENT AT RATE DC BLOCKING VOLTAGE PER ELEMENT	I_R	10							μA

NOTE: Suffix No. Versus Different Cases And Terminals

TERMINAL	CASE			
	SUFFIX No	NORMAL METAL CASE	THIN METAL CASE	THIN PLASTIC CASE ALUMINUM BASE
FAST ON TERMINALS	NO SUFFIX	S	P	PS
WIRE LEAD TERMINALS	W	WS	PW	PWS
IN LINE PIN CONFIGURATION	-	-	L	LS

RATINGS AND CHARACTERISTIC CURVES BP50-005 THRU BP50-10

FIG 1 MAXIMUM OUTPUT RECTIFIED CURRENT

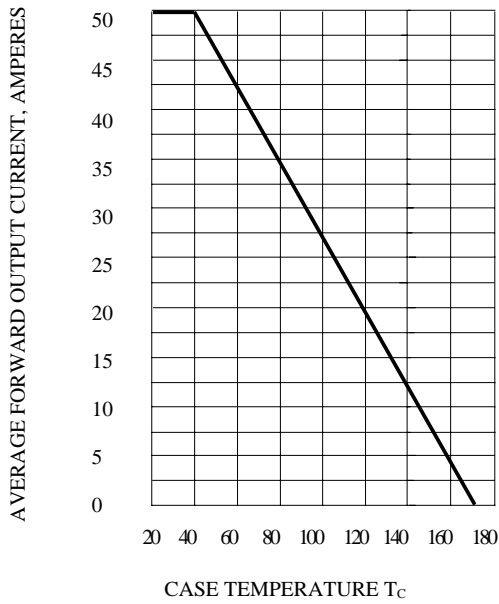


FIG 2 TYPICAL REVERSE CHARACTERISTICS AT $T_j=25^\circ\text{C}$

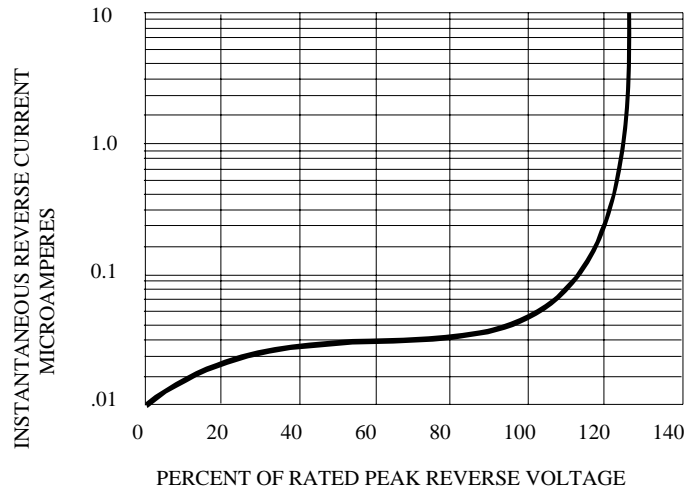


FIG 3 TYPICAL INSTANTANEOUS FORWARD CHARACTERISTICS

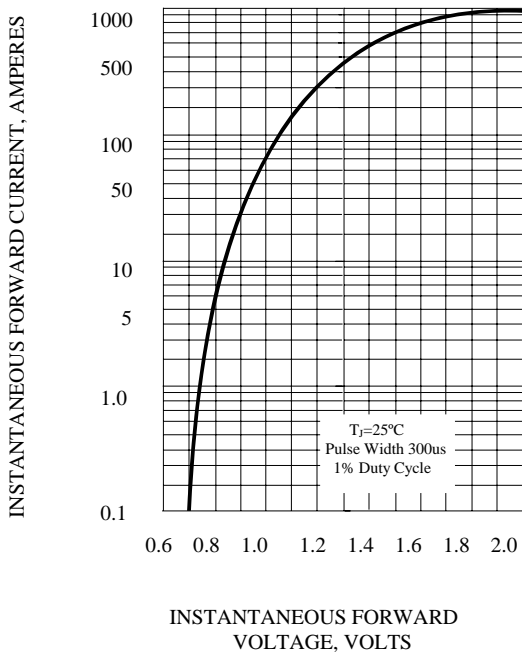


FIG 4 MAXIMUM NON-REPETITIVE PEAK FORWARD SURGE CURRENT

