



TAI-SAW TECHNOLOGY CO., LTD.

No. 3, Industrial 2nd Rd., Ping-Chen Industrial District,
Taoyuan, 324, Taiwan, R.O.C.

TEL: 886-3-4690038 FAX: 886-3-4697532

E-mail: tstsales@mail.taisaw.com Web: www.taisaw.com

Product Specifications Approval Sheet

Product Description: SAW Resonator 644.873 MHz SMD 3.0X3.0 mm

TST Part No.: TC0532A

Customer Part No.: _____

| |
|-----------------------------|
| Customer signature required |
| Company: _____ |
| Division: _____ |
| Approved by : _____ |
| Date: _____ |

Checked by: Paul Ni *Paul Ni*

Approved by: Francis Chen *Francis Chen*

Date: 2009/9/11

1. Customer signed back is required before TST can proceed with sample build and receive orders.
2. Orders received without customer signed back will be regarded as agreement on the specifications.
3. Any specifications changes must be approved upon by both parties and a new revision of specifications shall be released to reflect the changes.



TAI-SAW TECHNOLOGY CO., LTD.

No. 3, Industrial 2nd Rd., Ping-Chen Industrial District,
Taoyuan, 324, Taiwan, R.O.C.

TEL: 886-3-4690038 FAX: 886-3-4697532

E-mail: tstsales@mail.taisaw.com Web: www.taisaw.com

SAW Resonator 644.873 MHz

MODEL NO.: TC0532A

REV. NO.: 1.0

A. FEATURES:

1. 1-Port Resonator.

RoHS Compliant
Lead free
Lead-free soldering

B. MAXIMUM RATING:

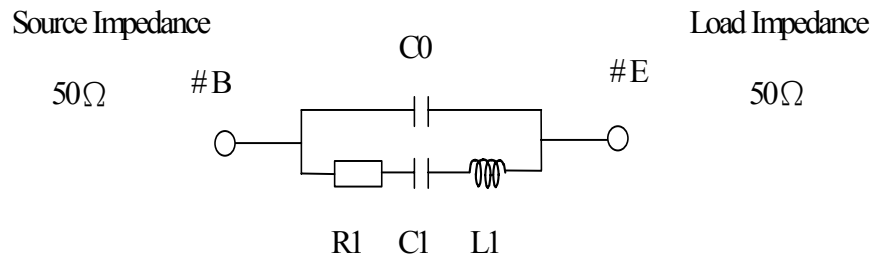
1. Input Power Level: 10 dBm
2. DC voltage: 3 V
3. Operating Temperature: -40°C to +85°C
4. Storage Temperature: -40°C to +85°C

C. ELECTRICAL CHARACTERISTICS:

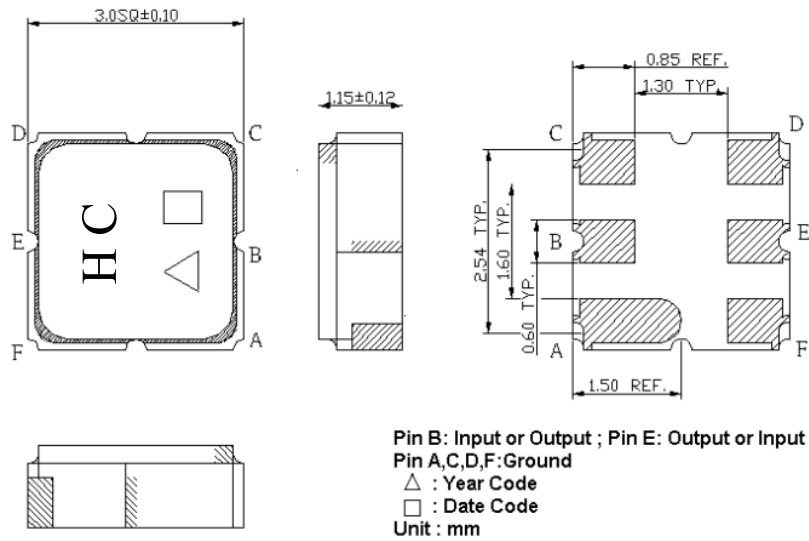
| Characteristic | Units | Minimum | Typical | Maximum |
|--------------------------------|----------------|-------------------|---------|---------|
| Center frequency Fr | MHz | 644.843 | 644.873 | 644.903 |
| Insertion Loss IL | dB | - | 1.36 | 2.0 |
| Equivalent Elements | | | | |
| Motional capacitance C1 | fF | - | 1.29 | - |
| Motional inductance L1 | μH | - | 47.3 | - |
| Motional resistance R1 | Ohm | - | 16.0 | - |
| Parallel capacitance Co | pF | - | 2.68 | - |
| Temp. coeff. | ppm/c*2 | - | 0.032 | - |
| Turnover To | deg.C | - | 25 | - |
| Package size | | SMD 3.0X3.0X1.4mm | | |

D. EQUIVIRENT CIRCUIT:

One-Port Resonator:

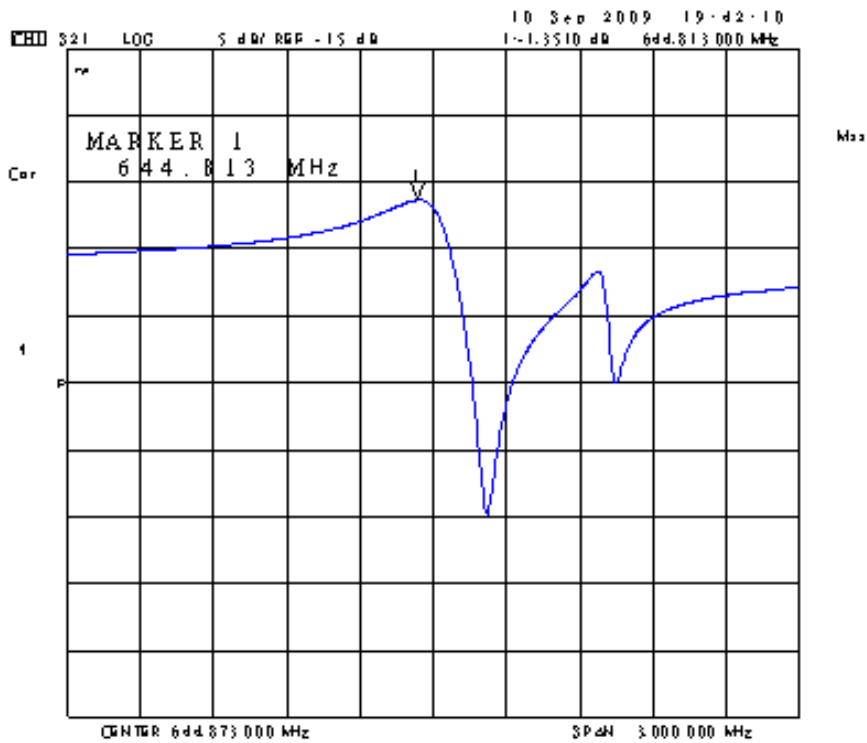


E. OUTLINE DRAWING:

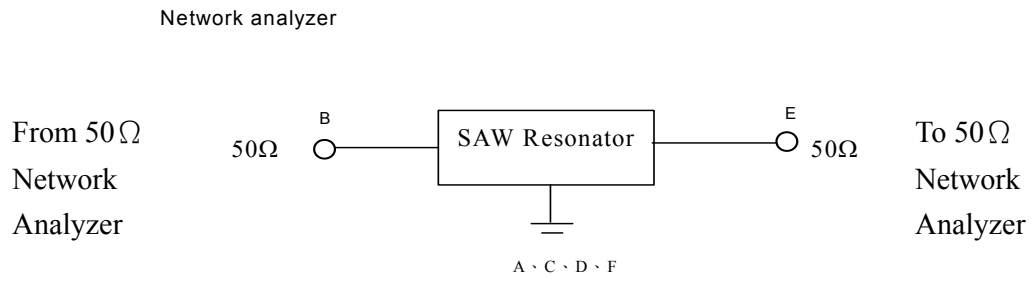


Date code: Provided by planer each year
 Year code: 9 for 2009, 0 for 2010, ..., 9 for 2019

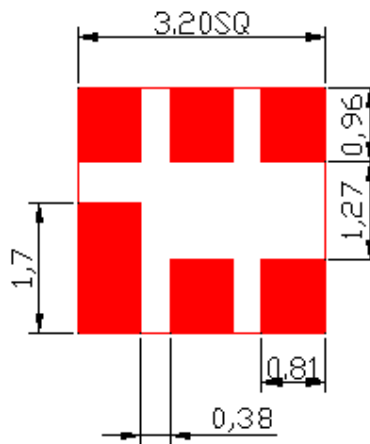
F. FREQUENCY CHARACTERISTICS



G. TEST CIRCUIT:

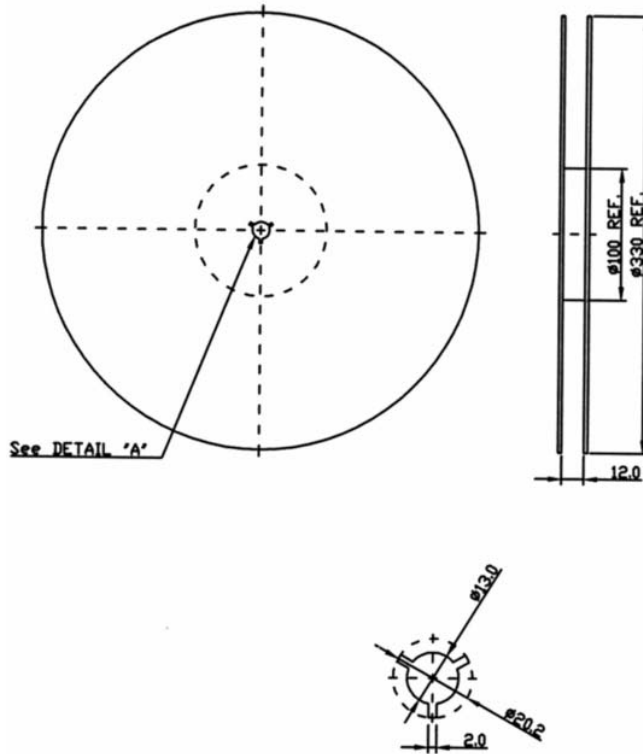


H. LAND PATTERN:

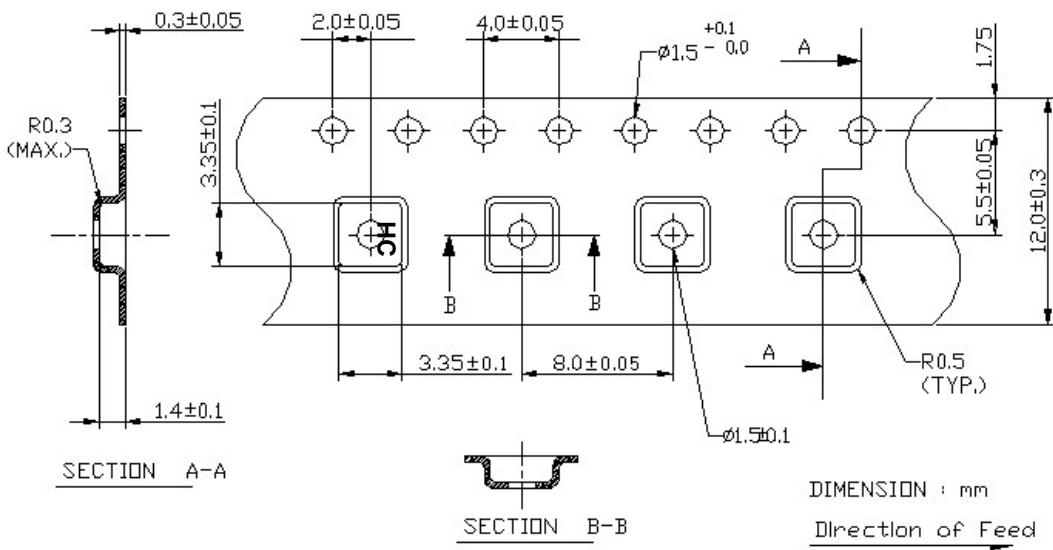


I. PACKING:

1. REEL DIMENSION



2. TAPE DIMENSION



J. RECOMMENDED REFLOW PROFILE:

