



TAI-SAW TECHNOLOGY CO., LTD.

No. 3, Industrial 2nd Rd., Ping-Chen Industrial District,
Taoyuan, 324, Taiwan, R.O.C.

TEL: 886-3-4690038 FAX: 886-3-4697532

E-mail: tstsales@mail.taisaw.com Web: www.taisaw.com

Approval Sheet For Product Specification

Issued Date:

Product Name: SAW Resonator 315.15 MHz F11

TST Parts No.: TC0223A

Customer Parts No.: _____

| |
|---------------------|
| Company: _____ |
| Division: _____ |
| Approved by : _____ |
| Date: _____ |

Checked by: Vincent Liu

Approval by: Francis Chen

Date: 2003/8/07



TAI-SAW TECHNOLOGY CO., LTD.

No. 3, Industrial 2nd Rd., Ping-Chen Industrial District,
Taoyuan, 324, Taiwan, R.O.C.

TEL: 886-3-4690038 FAX: 886-3-4697532

E-mail: tstsales@mail.taisaw.com Web: www.taisaw.com

SAW Resonator 315.15 MHz

MODEL NO.: TC0223A

REV. NO.:1

A. FEATURES:

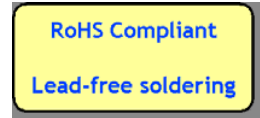
1. 1-Port Resonator.

B. MAXIMUM RATING:

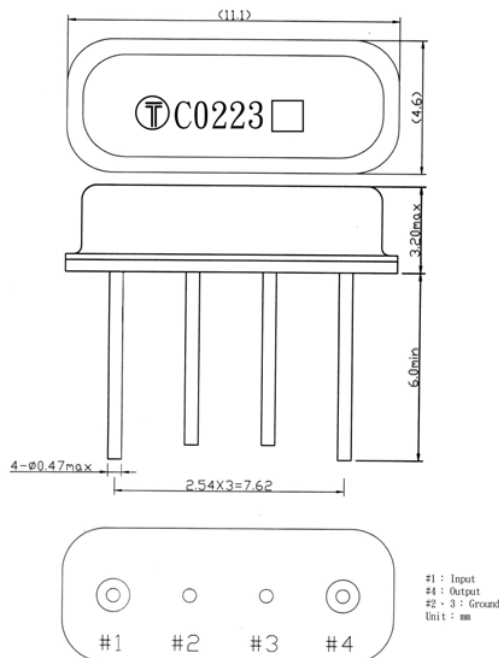
1. Input Power Level: 0 dBm
2. DC voltage: 12 V
3. Operating Temperature: -40°C to +85°C
4. Storage Temperature: -40°C to +85°C

C. ELECTRICAL CHARACTERISTICS:

| Characteristic | Units | Minimum | Typical | Maximum |
|--------------------------------|----------------|---------|---------|---------|
| Center frequency Fr | MHz | 315.050 | 315.150 | 315.250 |
| Insertion Loss IL | dB | - | 0.8 | 2 |
| Motional capacitance C1 | fF | - | 2.85 | - |
| Motional inductance L1 | μH | - | 89.54 | - |
| Motional resistance R1 | Ohm | - | 11.79 | - |
| Parallel capacitance Co | pF | - | 4.69 | - |
| Temp.coeff. | ppm/c*2 | - | 0.032 | - |
| Turnover To | deg.C | 30 | - | 60 |
| Package size | | F11 | | |



D. OUTLINE DRAWING:



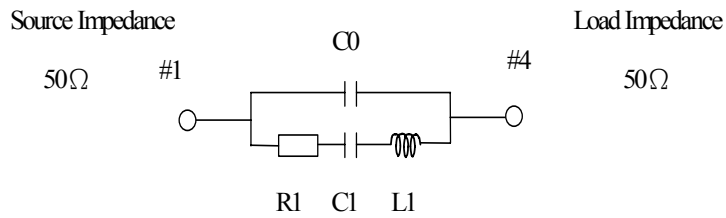
TAI-SAW TECHNOLOGY CO., LTD.

TST DCC
Release document

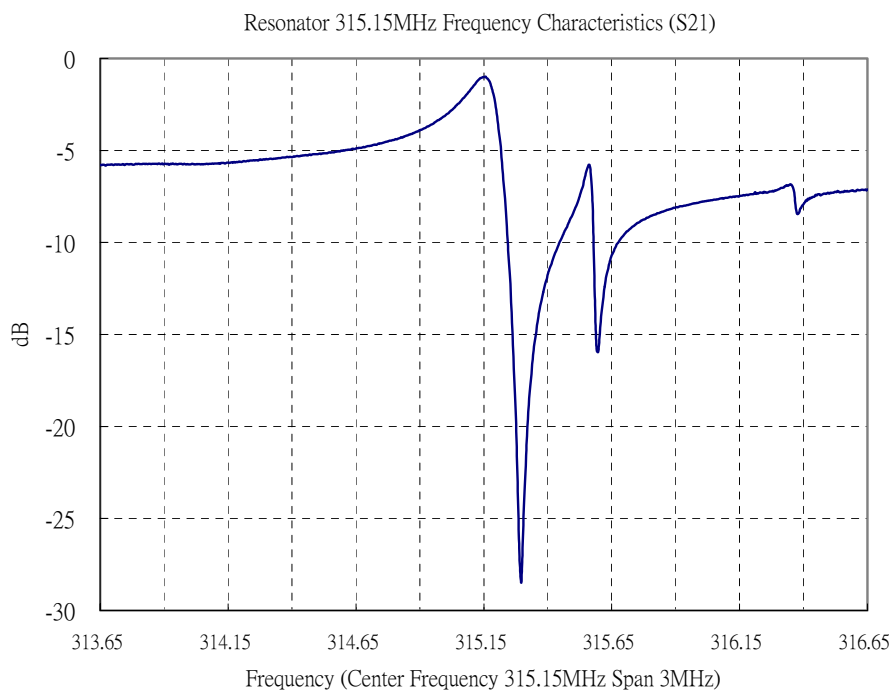
- 2 -

E. EQUIVALENT CIRCUIT:

One-Port Resonator:

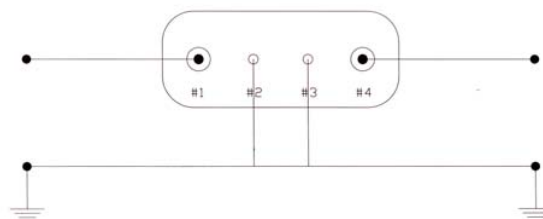


F. FREQUENCY CHARACTERISTICS:



G. TEST CIRCUIT:

From 50Ω
Network
Analyzer



To 50Ω
Network
Analyzer