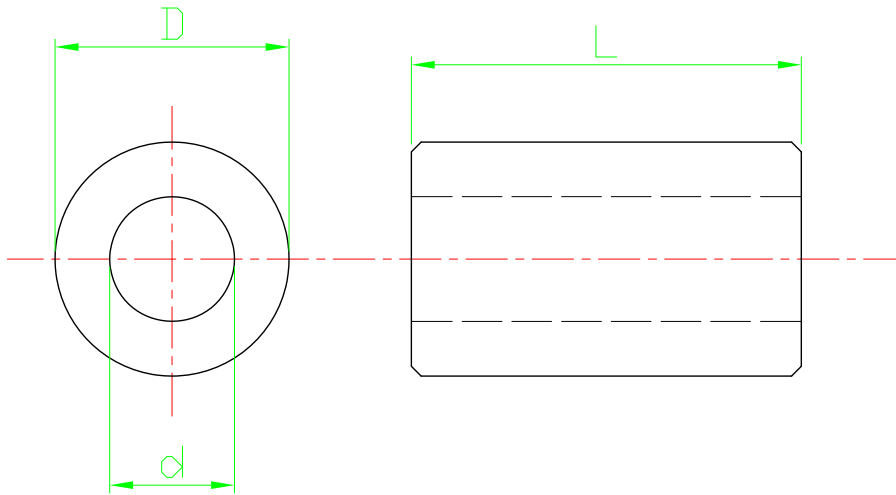


RoHS compliant



For M3-screws
PU=100 pcs

Option	Dimensions		
	L	D	d
A	5	6	3.2
B	8	6	3.2
C	10	6	3.2
D	12	6	3.2
E	15	6	3.2
G	20	6	3.2

Scale	1:1					Date	Name	Customer-No.	
TOLERANCE						Drawn	20.08.2009	Dean	
X.	±X					Approved	10.03.2010	Andy	
X.X	±X								
X.XX	±X								
DIM	TOL	②	Modify drawing layout	10.03.2010	Dean			ASSMANN WSW-No. V6254x	
X.°	±X°	①	Drawn	20.08.2009	Dean			Drawing-No. ASS 0918 HS	rev02
X.X°	±X°							Replace	Sheet
Angle	TOL	Id.	Modification	Date	Name				

1

2

3

4

5

6

7