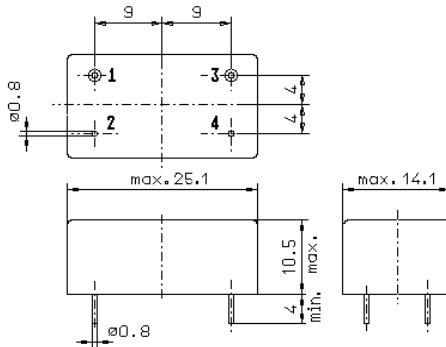


Specification for crystal filter:

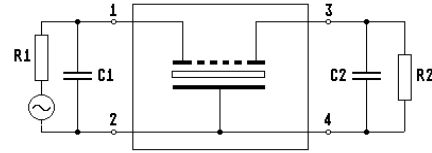
**QF 172.955-3500/07V1**

## 1. General

### 1.1. Package:



GM3.1



- |                                   |                      |
|-----------------------------------|----------------------|
| 1.2. Type name:                   | QF 172.955-3500/07V1 |
| 1.3. Number of poles:             | 4                    |
| 1.4. Operating temperature range: | -20°C to +70°C       |
| 1.5. Operable temperature range:  | -40°C to +85°C       |

## 2. Electric values

- |   |                                       |
|---|---------------------------------------|
| 2.1. Nominal centre frequency fo:                 | 172.955 MHz                           |
| 2.2. <b>Pass band</b>                             |                                       |
| 2.2.1. Bandwidth between 3 dB - frequencies:      | $\geq f_0 \pm 20$ kHz                 |
| 2.2.2. Ripple:                                    | $\leq 2.0$ dB at $f_0 \pm 17.5$ kHz   |
| 2.2.3. Group delay distortion:                    | $\leq 25$ $\mu$ s at $f_0 \pm 20$ kHz |
| 2.2.4. Insertion loss:                            | $\leq 7$ dB                           |
| ( measured on smallest attenuation in pass band ) |                                       |
| 2.3. <b>Stop band</b>                             |                                       |
| 2.3.1. $f_0 \pm 80$ kHz                           | $\geq 40$ dB                          |
| 2.3.2. $f_0 \pm 455$ kHz                          | $\geq 55$ dB                          |
| 2.3.3. Alternate attenuation:                     | $\geq 55$ dB                          |
| 2.3.4. Spurious responses:                        | <b><math>\geq 20</math> dB</b>        |
| 2.4. Terminating impedance ( input and output ):  | 50 $\Omega$ // 0 pF                   |
| 2.5. Nominal drive level:                         | < 0 dBm                               |
| 2.6. Maximum allowed drive level:                 | 15 dBm                                |
| 2.7. Intermodulation                              |                                       |
| frequency 1:                                      | 173.055                               |
| frequency 2:                                      | 173.155                               |
| input power:                                      | 0 dBm                                 |
| IM:   | > 58 dB                               |

- |                            |   |
|----------------------------|---|
| 3. Marking on the package: | manufacturer, date code<br>QF 172.955-3500/07V1 |
| 4. Environment conditions: | Corresponding to Telefilter CF001               |

Edited by: \_\_\_\_\_ date: \_\_\_\_\_ Name: \_\_\_\_\_