

Monolithic crystal filter

QF 1.4-U0200/05



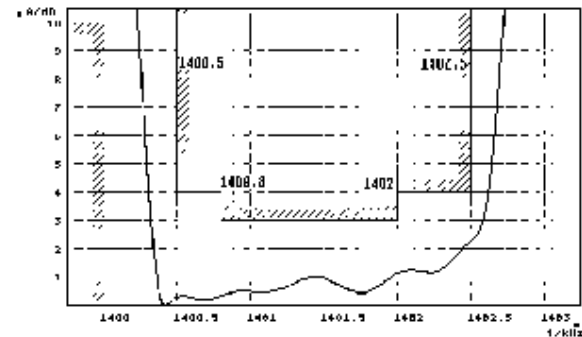
Application

- 6 pol filter
- i.f.- filter
- use in mobile and stationary transceivers

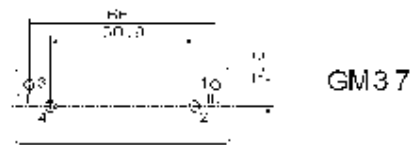
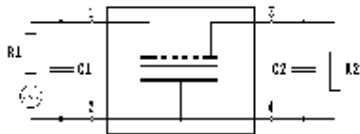
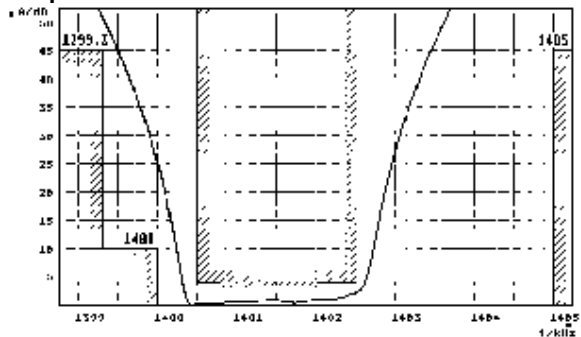
Limiting values	Unit	Value
Center frequency	fo	MHz 1.4
Insertion loss		dB ≤ 5.0
Pass band at 4.0 dB		kHz $+0.5 \dots 2.5$
Ripple in pass band	fo $+0.8 \dots 2$ kHz	dB ≤ 3.0
Stop band attenuation	fo	dB > 10
	fo -0.7 kHz; fo $+5$ kHz	dB ≤ 45
Alternate attenuation		dB > 45 except spurious
Terminating impedance Z		
R1 C1	Ohm/pF	1000 75
R2 C2	Ohm/pF	1000 75
Operating temp. range	$^{\circ}$ C	-10... +65

Characteristics QF 1.4-U0200/05

Pass band



Stop band



- Pin connections:
- 1 Input
 - 2 Ground-Input
 - 3 Output
 - 4 Ground-Output

TELE FILTER Zweigniederlassung der DOVER Germany GMBH

18.06.01

Potsdamer Str. 18 D- 14513 Teltow ☎ (+49)03328-4784-10 ; Fax (+49)03328-4784-30 <http://www.vectron.com>