

# Replacing the CLC016 Reclocker with the LMH0026

National Semiconductor  
Application Note 2004  
Gary Melchior  
October 13, 2009



## Introduction

The LMH0026 SD-SDI relocker can replace the CLC016 relocker in many applications. The LMH0026 and CLC016 are both relockers designed to recover and retime data, primarily for the SMPTE 259M interface. Both relockers are rated for industrial temperature range operation (-40°C to +85°C).

The LMH0026, the newer generation SDI relocker, has advanced features and is pin compatible with the LMH0046 HD-SDI relocker and the LMH0346 3G-SDI relocker. This

allows a forward migration path from SD to HD to 3G. The LMH0026 offers improved performance and extremely low output jitter (half the output jitter of the CLC016 at 270 Mbps). The LMH0026 also offers a lower supply voltage (3.3V), enabling system designers to migrate to lower-power designs. The LMH0026 provides a 37% power savings over the CLC016, with typical power of 330 mW in comparison with 525 mW for the CLC016.

*Table 1* shows the key differences between the CLC016 and LMH0026.

**TABLE 1. CLC016 and LMH0026 Key Differences**

	CLC016	LMH0026
<b>Power Supply (V<sub>CC</sub>)</b>	5.0V	3.3V
<b>Package</b>	28-pin PLCC or TSSOP	20-pin e-TSSOP
<b>Data Rates</b>	40 to 400 Mbps	270 Mbps
<b>Output Jitter</b>	150 ps <sub>p,p</sub>	74 ps <sub>p,p</sub>
<b>ESD Rating</b>	≥±2 kV HBM	≥±7 kV HBM
<b>Input Interface</b>	2.5V to 5.0V common mode	1.2V to 3.3V common mode
<b>Output Structure</b>	Open collector, requires external 75Ω pullups to 5V	CML with internal 50Ω pullups (to 3.3V)
<b>Loop Filter</b>	Three Components: 0.1 μF capacitor, 82 pF capacitor, 500Ω resistor	Single 56 nF capacitor
<b>Rate Selection</b>	Four selectable rates, auto or manual rate select	Single 270 Mbps rate operation, automatically bypasses other rates
<b>Other Features</b>	Carrier detect	Bypass/Auto Bypass, choice of 2nd relocked data output or clock

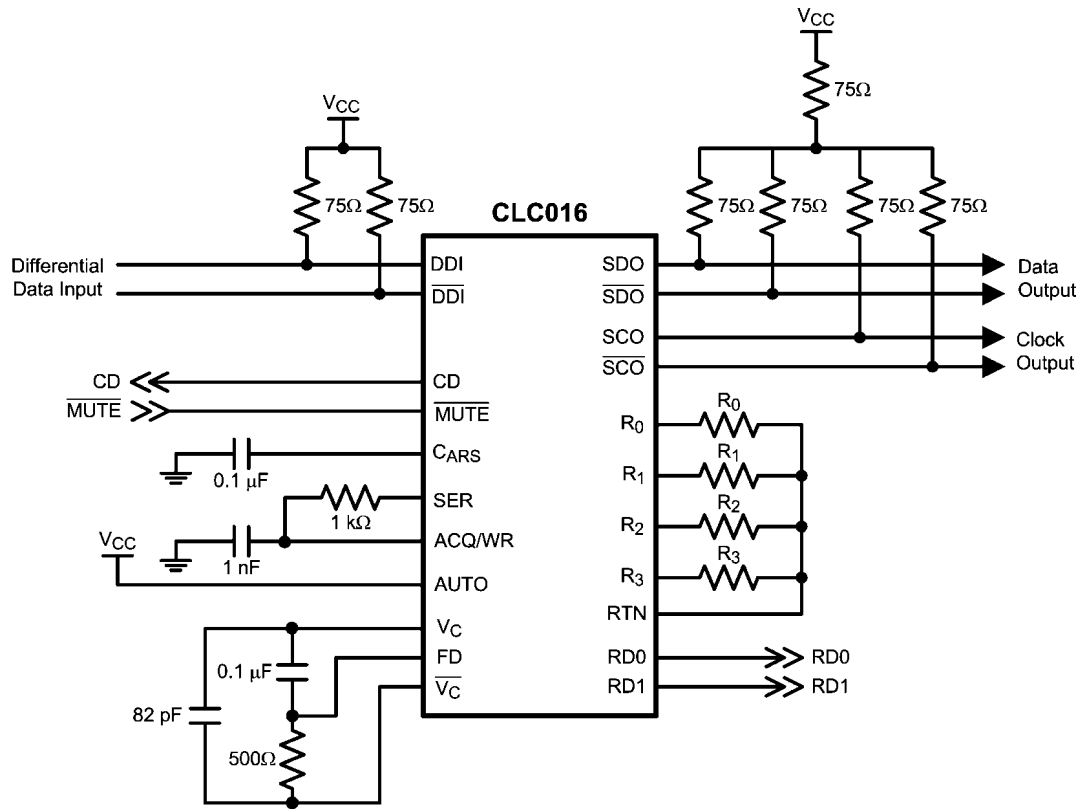
## How To Replace the CLC016 with the LMH0026

Replacing the CLC016 with the LMH0026 requires a few simple steps. The device packages and pinouts are quite different so this change requires a new PCB layout. To replace the CLC016 with the LMH0026, follow these steps:

1. Change the power supply from 5V to 3.3V.
2. Replace the input termination with a single 100Ω differential termination, located close to the LMH0026 input pins. Check the output common mode voltage of the driving device to determine if it is compatible with the LMH0026 input common mode range—if not, add AC coupling capacitors in series with the input, prior to the 100Ω termination.

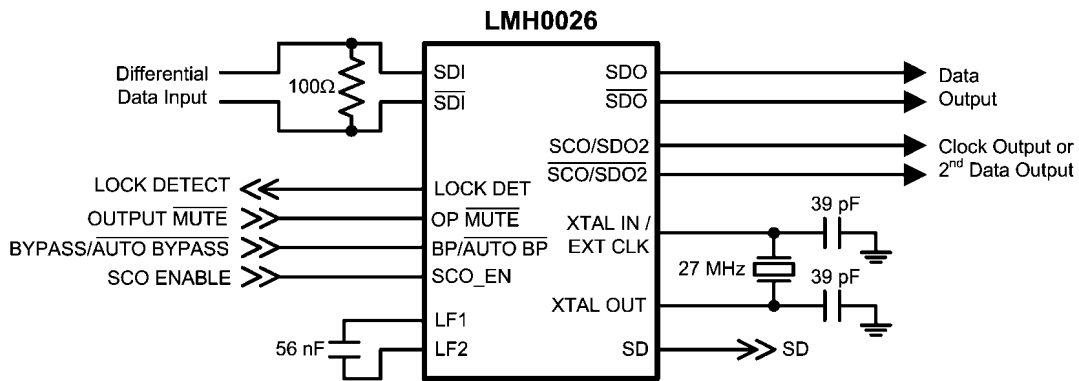
3. Removed the 75Ω pullups on the output and replace with a 100Ω differential termination located at the input of the next stage. The outputs may also be AC coupled, but no pullups are required.
4. Change the loop filter circuit to a single 56 nF capacitor between LF1 and LF2.
5. Add a 27 MHz crystal or suitable external clock reference. Connect the crystal between the XTAL IN/EXT CLK and XTAL OUT pins along with the 39 pF capacitors as shown in the typical application in the datasheet, or simply connect the 27 MHz external clock to the XTAL IN/EXT CLK pin.

*Figure 1* shows the typical application for the CLC016, and *Figure 2* shows the typical application for the LMH0026.



30106201

FIGURE 1. CLC016 Typical Application



30106202

FIGURE 2. LMH0026 Typical Application

**INPUT INTERFACE**

The input common mode voltage range of the CLC016 is between 2.5V and  $V_{CC}$  (5V), and the minimum differential input amplitude is 200 mV. When the CLC016 input is driven by an equalizer such as the CLC014 (with its open collector output), the CLC016 input interface will typically consist of 75Ω pullups to  $V_{CC}$ , as shown in *Figure 1*.

The LMH0026 input interface is similar to that of the CLC016, but better suited for interfacing to the 3.3V and lower supply voltages of current generation devices. The input common mode voltage range of the LMH0026 is from 1.2V to  $V_{CC}$

(3.3V), with the same minimum differential input amplitude as the CLC016. This input common mode voltage range allows DC coupling to many 3.3V and 2.5V devices.

**OUTPUT INTERFACE**

The CLC016 outputs are open collector and require 75Ω pullups to 5V to generate an output voltage. This structure has some limitations when interfacing to non-5V systems. The CLC016 outputs are essentially cut off if the SDO output voltage drops below  $V_{CC}-1.6V$  (typically 3.4V), so this prevents DC-coupling to other 3.3V devices.

The LMH0026 provides much more flexibility. The LMH0026 outputs are CML with internal  $50\Omega$  pullups to 3.3V. They may be DC coupled to many more types of inputs, including the LMH0001 cable driver. Typically only a far-end differential termination (a simple resistor) is required. If the LMH0026 output common mode voltage is not compatible with the input common mode voltage of the receiving device, the outputs may be AC coupled. The outputs do not require pullups to  $V_{CC}$ .

#### LOOP FILTER

The CLC016 external loop filter circuit typically consists of a  $1.0\ \mu\text{F}$  capacitor, an  $82\ \text{pF}$  capacitor, and a  $500\Omega$  resistor. These components define the overall jitter transfer function and control the acquisition performance of the PLL, and may be changed to affect these parameters. For the LMH0026, the external loop filter should consist of a single  $56\ \text{nF}$  capacitor only. The LMH0026 loop filter was designed and optimized for a  $56\ \text{nF}$  capacitor and it should not be changed.

#### RATE SELECTION

The CLC016 can be configured to recognize up to four different data rates (between 40 Mbps and 400 Mbps) using external resistors, and can further be set to automatically detect between these four rates or manually configured for the desired rate. The LMH0026 supports a single 270 Mbps data rate, and bypasses other data rates up to 1.5 Gbps. The LMH0026 also requires an external 27 MHz reference clock (crystal or suitable external reference) which is not necessary for the CLC016, but this allows for its superior performance: the LMH0026 has typical output jitter of 0.02 UI at 270 Mbps (with 0.2 UI input jitter) vs. typical output jitter of 0.04 UI at 270 Mbps for the CLC016.

#### OTHER FEATURES

The CLC016 includes an input Carrier Detect (CD) signal to indicate the presence of transitions at the input. In typical

CLC016 applications, CD is tied to MUTE to latch the output when no input signal is present. The LMH0026 does not provide an input carrier detector, but it does provide a robust LOCK DETECT signal to indicate that data is being received and the PLL is locked. LOCK DETECT may be connected to OUTPUT MUTE to mute the data and clock outputs when no valid data is being received.

The LMH0026 includes advanced features not present in the CLC016. The LMH0026 includes a BYPASS/AUTO BYPASS function which can be used to either force the reclocker to output all data without reclocking it, or automatically bypass only unsupported data rates while reclocking 270 Mbps data. The LMH0026 also provides the option of either a second reclocked data output or the serial data rate clock (the CLC016 only provides the clock and has no option for a second data output).

## LMH0026 Enhancements over the CLC016

The LMH0026 is a solid upgrade and good replacement for the CLC016. It is designed in a newer, more advanced process. The LMH0026 offers lower power, lower jitter, better ESD protection, a more flexible output interface, and new features such as a reclocker bypass and a second reclocked data output. The LMH0026's smaller, space-saving package allows for more compact designs. The PCB layout is simpler as the LMH0026 requires less PCB components overall than the CLC016. In addition, the LMH0026's pin compatibility with HD-SDI and 3G-SDI equalizers offers an easy upgrade path and allows future-proof designs.

## Notes

For more National Semiconductor product information and proven design tools, visit the following Web sites at:

Products		Design Support	
Amplifiers	<a href="http://www.national.com/amplifiers">www.national.com/amplifiers</a>	WEBENCH® Tools	<a href="http://www.national.com/webench">www.national.com/webench</a>
Audio	<a href="http://www.national.com/audio">www.national.com/audio</a>	App Notes	<a href="http://www.national.com/appnotes">www.national.com/appnotes</a>
Clock and Timing	<a href="http://www.national.com/timing">www.national.com/timing</a>	Reference Designs	<a href="http://www.national.com/refdesigns">www.national.com/refdesigns</a>
Data Converters	<a href="http://www.national.com/adc">www.national.com/adc</a>	Samples	<a href="http://www.national.com/samples">www.national.com/samples</a>
Interface	<a href="http://www.national.com/interface">www.national.com/interface</a>	Eval Boards	<a href="http://www.national.com/evalboards">www.national.com/evalboards</a>
LVDS	<a href="http://www.national.com/lvds">www.national.com/lvds</a>	Packaging	<a href="http://www.national.com/packaging">www.national.com/packaging</a>
Power Management	<a href="http://www.national.com/power">www.national.com/power</a>	Green Compliance	<a href="http://www.national.com/quality/green">www.national.com/quality/green</a>
Switching Regulators	<a href="http://www.national.com/switchers">www.national.com/switchers</a>	Distributors	<a href="http://www.national.com/contacts">www.national.com/contacts</a>
LDOs	<a href="http://www.national.com/ldo">www.national.com/ldo</a>	Quality and Reliability	<a href="http://www.national.com/quality">www.national.com/quality</a>
LED Lighting	<a href="http://www.national.com/led">www.national.com/led</a>	Feedback/Support	<a href="http://www.national.com/feedback">www.national.com/feedback</a>
Voltage Reference	<a href="http://www.national.com/vref">www.national.com/vref</a>	Design Made Easy	<a href="http://www.national.com/easy">www.national.com/easy</a>
PowerWise® Solutions	<a href="http://www.national.com/powerwise">www.national.com/powerwise</a>	Solutions	<a href="http://www.national.com/solutions">www.national.com/solutions</a>
Serial Digital Interface (SDI)	<a href="http://www.national.com/sdi">www.national.com/sdi</a>	Mil/Aero	<a href="http://www.national.com/milaero">www.national.com/milaero</a>
Temperature Sensors	<a href="http://www.national.com/tempensors">www.national.com/tempensors</a>	SolarMagic™	<a href="http://www.national.com/solarmagic">www.national.com/solarmagic</a>
Wireless (PLL/VCO)	<a href="http://www.national.com/wireless">www.national.com/wireless</a>	PowerWise® Design University	<a href="http://www.national.com/training">www.national.com/training</a>

THE CONTENTS OF THIS DOCUMENT ARE PROVIDED IN CONNECTION WITH NATIONAL SEMICONDUCTOR CORPORATION ("NATIONAL") PRODUCTS. NATIONAL MAKES NO REPRESENTATIONS OR WARRANTIES WITH RESPECT TO THE ACCURACY OR COMPLETENESS OF THE CONTENTS OF THIS PUBLICATION AND RESERVES THE RIGHT TO MAKE CHANGES TO SPECIFICATIONS AND PRODUCT DESCRIPTIONS AT ANY TIME WITHOUT NOTICE. NO LICENSE, WHETHER EXPRESS, IMPLIED, ARISING BY ESTOPPEL OR OTHERWISE, TO ANY INTELLECTUAL PROPERTY RIGHTS IS GRANTED BY THIS DOCUMENT.

TESTING AND OTHER QUALITY CONTROLS ARE USED TO THE EXTENT NATIONAL DEEMS NECESSARY TO SUPPORT NATIONAL'S PRODUCT WARRANTY. EXCEPT WHERE MANDATED BY GOVERNMENT REQUIREMENTS, TESTING OF ALL PARAMETERS OF EACH PRODUCT IS NOT NECESSARILY PERFORMED. NATIONAL ASSUMES NO LIABILITY FOR APPLICATIONS ASSISTANCE OR BUYER PRODUCT DESIGN. BUYERS ARE RESPONSIBLE FOR THEIR PRODUCTS AND APPLICATIONS USING NATIONAL COMPONENTS. PRIOR TO USING OR DISTRIBUTING ANY PRODUCTS THAT INCLUDE NATIONAL COMPONENTS, BUYERS SHOULD PROVIDE ADEQUATE DESIGN, TESTING AND OPERATING SAFEGUARDS.

EXCEPT AS PROVIDED IN NATIONAL'S TERMS AND CONDITIONS OF SALE FOR SUCH PRODUCTS, NATIONAL ASSUMES NO LIABILITY WHATSOEVER, AND NATIONAL DISCLAIMS ANY EXPRESS OR IMPLIED WARRANTY RELATING TO THE SALE AND/OR USE OF NATIONAL PRODUCTS INCLUDING LIABILITY OR WARRANTIES RELATING TO FITNESS FOR A PARTICULAR PURPOSE, MERCHANTABILITY, OR INFRINGEMENT OF ANY PATENT, COPYRIGHT OR OTHER INTELLECTUAL PROPERTY RIGHT.

### LIFE SUPPORT POLICY

**NATIONAL'S PRODUCTS ARE NOT AUTHORIZED FOR USE AS CRITICAL COMPONENTS IN LIFE SUPPORT DEVICES OR SYSTEMS WITHOUT THE EXPRESS PRIOR WRITTEN APPROVAL OF THE CHIEF EXECUTIVE OFFICER AND GENERAL COUNSEL OF NATIONAL SEMICONDUCTOR CORPORATION.** As used herein:

Life support devices or systems are devices which (a) are intended for surgical implant into the body, or (b) support or sustain life and whose failure to perform when properly used in accordance with instructions for use provided in the labeling can be reasonably expected to result in a significant injury to the user. A critical component is any component in a life support device or system whose failure to perform can be reasonably expected to cause the failure of the life support device or system or to affect its safety or effectiveness.

National Semiconductor and the National Semiconductor logo are registered trademarks of National Semiconductor Corporation. All other brand or product names may be trademarks or registered trademarks of their respective holders.

Copyright© 2009 National Semiconductor Corporation

For the most current product information visit us at [www.national.com](http://www.national.com)



**National Semiconductor Americas Technical Support Center**  
 Email: [support@nsc.com](mailto:support@nsc.com)  
 Tel: 1-800-272-9959

**National Semiconductor Europe Technical Support Center**  
 Email: [europe.support@nsc.com](mailto:europe.support@nsc.com)

**National Semiconductor Asia Pacific Technical Support Center**  
 Email: [ap.support@nsc.com](mailto:ap.support@nsc.com)

**National Semiconductor Japan Technical Support Center**  
 Email: [jpn.feedback@nsc.com](mailto:jpn.feedback@nsc.com)