

LM3444 - 230VAC, 8W Isolated Flyback LED Driver

National Semiconductor
Application Note 2097
Clinton Jensen
May 3, 2011



Introduction

This demonstration board highlights the performance of a LM3444 based Flyback LED driver solution that can be used to power a single LED string consisting of 4 to 10 series connected LEDs from an 180 V_{RMS} to 265 V_{RMS}, 50 Hz input power supply. The key performance characteristics under typical operating conditions are summarized in this application note.

This is a four-layer board using the bottom and top layer for component placement. The demonstration board can be modified to adjust the LED forward current, the number of series connected LEDs that are driven and the switching frequency. Refer to the LM3444 datasheet for detailed instructions.

A bill of materials is included that describes the parts used on this demonstration board. A schematic and layout have also been included along with measured performance characteristics.

Key Features

- Line injection circuitry enables PFC values greater than 0.98
- Adjustable LED current and switching frequency
- Flicker free operation

Applications

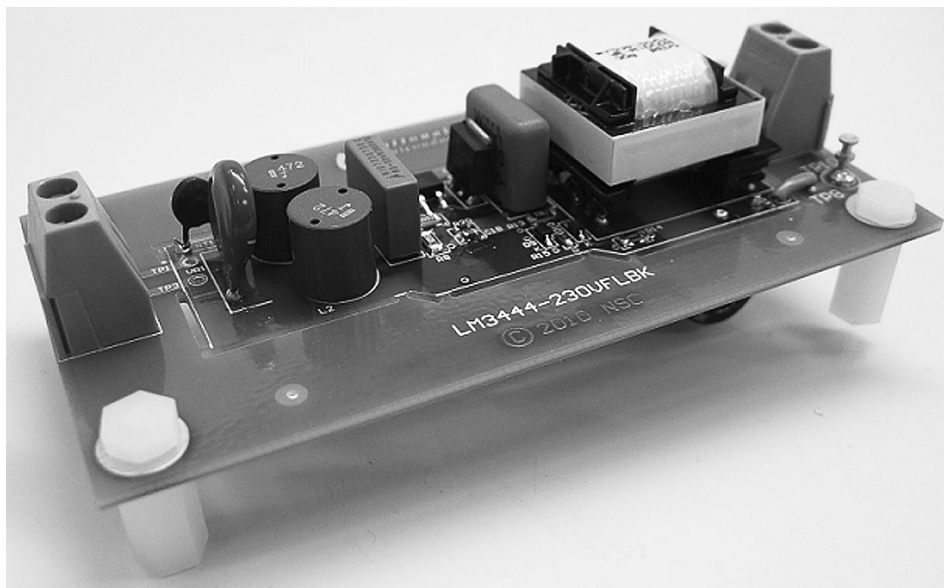
- Solid State Lighting
- Industrial and Commercial Lighting
- Residential Lighting

Performance Specifications

Based on an LED $V_f = 3.6V$

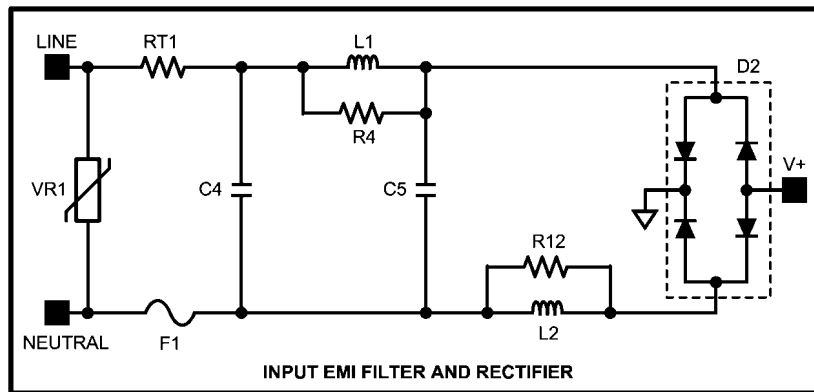
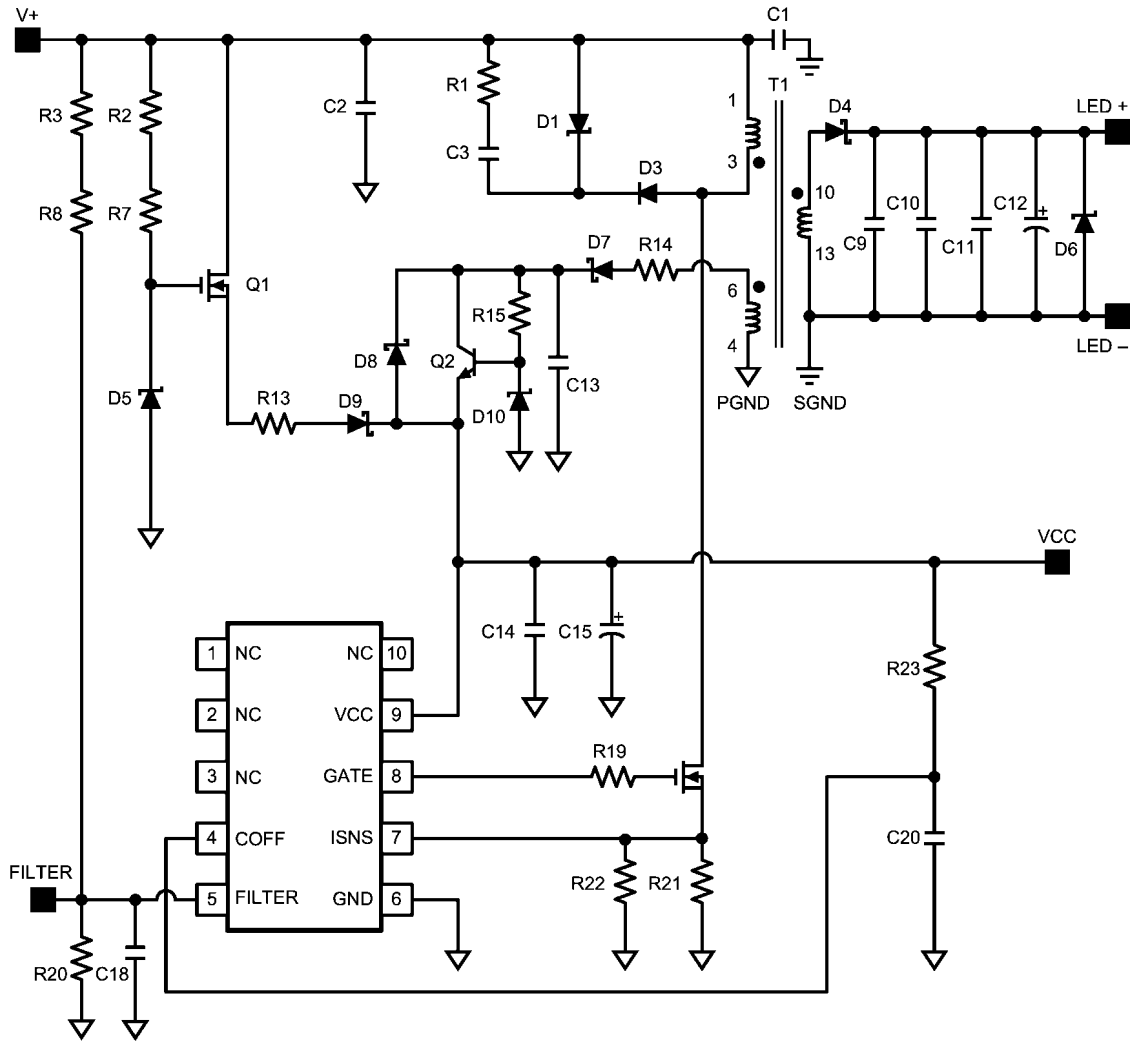
Symbol	Parameter	Min	Typ	Max
V_{IN}	Input voltage	180 V _{RMS}	230 V _{RMS}	265 V _{RMS}
V_{OUT}	LED string voltage	13 V	21.5 V	36 V
I_{LED}	LED string average current	-	350 mA	-
P_{OUT}	Output power	-	7.5 W	-
f_{sw}	Switching frequency	-	67 kHz	-

Demo Board



30139704

LM3444 230VAC, 8W Isolated Flyback LED Driver Demo Board Schematic



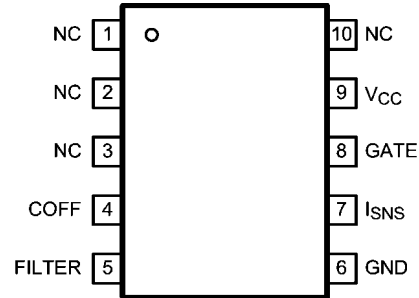
30139701

Warning: The LM3444 evaluation board has exposed high voltage components that present a shock hazard. Caution must be taken when handling the evaluation board. Avoid touching the evaluation board and removing any cables while the evaluation board is operating.

Warning: The ground connection on the evaluation board is NOT referenced to earth ground. If an oscilloscope ground lead is connected to the evaluation board ground test point for analysis and the mains AC power is applied (without any isolation), the fuse (F1) will fail open. For bench evaluation, either the input AC power source or the bench measurement equipment should be isolated from the earth ground connection. Isolating the evaluation board (using 1:1 line isolation transformer) rather than the oscilloscope is highly recommended.

Warning: The LM3444 evaluation board should not be powered with an open load. For proper operation, ensure that the desired number of LEDs are connected at the output before applying power to the evaluation board.

LM3444 Device Pin-Out



30139702

Pin Descriptions – 10 Pin MSOP

Pin #	Name	Description
1	NC	No internal connection.
2	NC	No internal connection.
3	NC	No internal connection.
4	COFF	OFF time setting pin. A user set current and capacitor connected from the output to this pin sets the constant OFF time of the switching controller.
5	FILTER	Filter input. A capacitor tied to this pin filters the error amplifier. Could also be used as an analog dimming input.
6	GND	Circuit ground connection.
7	ISNS	LED current sense pin. Connect a resistor from main switching MOSFET source, ISNS to GND to set the maximum LED current.
8	GATE	Power MOSFET driver pin. This output provides the gate drive for the power switching MOSFET of the buck controller.
9	V _{CC}	Input voltage pin. This pin provides the power for the internal control circuitry and gate driver.
10	NC	No internal connection.

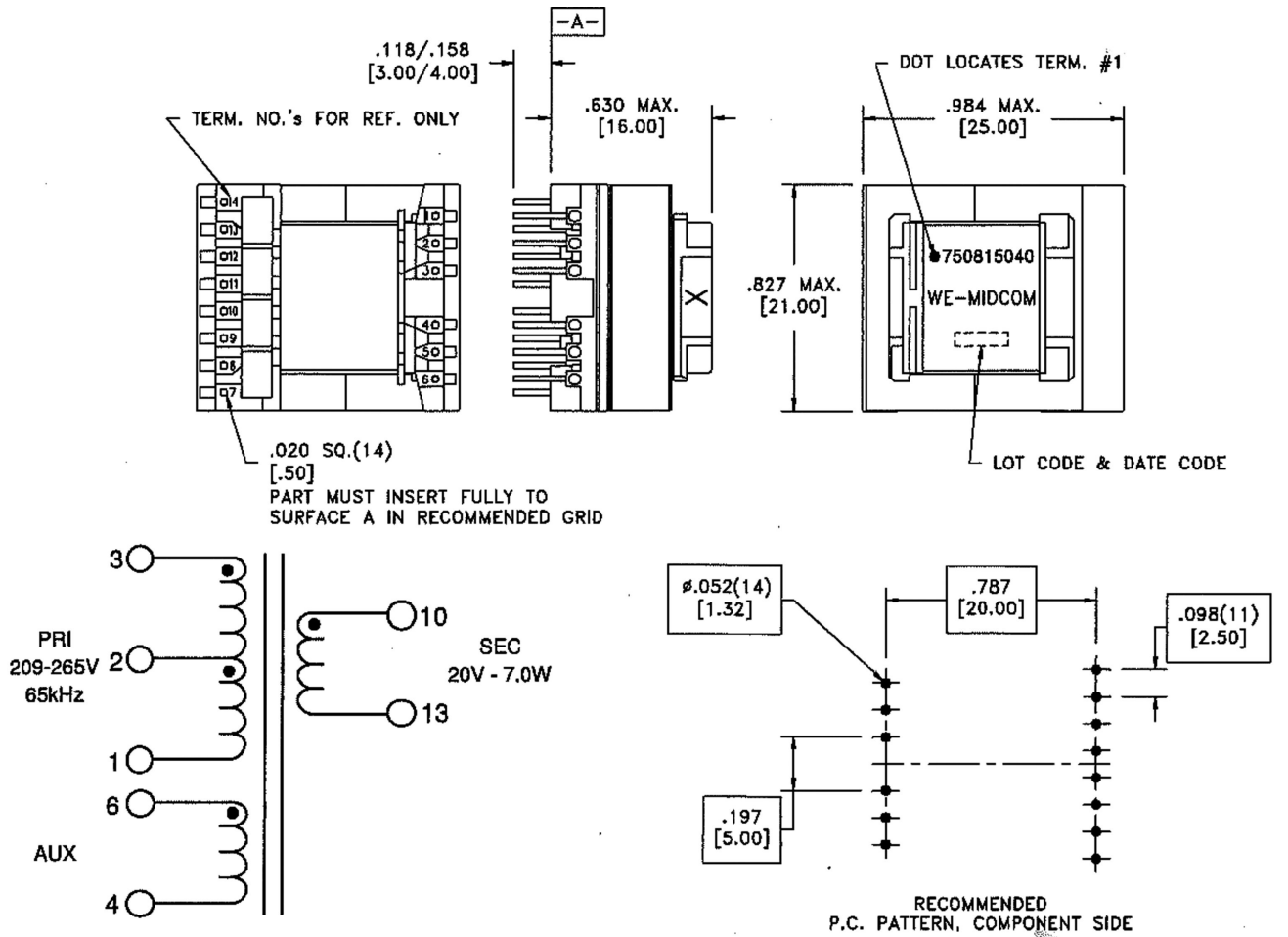
Bill of Materials

Designator	Description	Manufacturer	Part Number	RoHS
U1	Offline LED Driver, PowerWise	National Semiconductor	LM3444MM	Y
C1	Ceramic, X7R, 250VAC, 10%	Murata Electronics North America	DE1E3KX332MA5BA01	Y
C2	Ceramic, Polypropylene, 400VDC, 10%	WIMA	MKP10-.033/400/5P10	Y
C3	CAP, CERM, 330pF, 630V, +/-5%, C0G/NP0, 1206	TDK	C3216C0G2J331J	Y
C4	Ceramic, X7R, 250V, X2, 10%, 2220	Murata Electronics North America	GA355DR7GF472KW01L	Y
C5	CAP, Film, 0.033µF, 630V, +/-10%, TH	EPCOS Inc	B32921C3333K	Y
C9, C11	CAP, CERM, 1µF, 50V, +/-10%, X7R, 1210	MuRata	GRM32RR71H105KA01L	Y
C10	CAP, CERM, 0.47µF, 50V, +/-10%, X7R, 0805	MuRata	GRM21BR71H474KA88L	Y
C12	Aluminium Electrolytic, 680uF, 35V, 20%,	Nichicon	UHE1V681MHD6	Y
C13	CAP, CERM, 1µF, 35V, +/-10%, X7R, 0805	Taiyo Yuden	GMK212B7105KG-T	Y
C14	CAP, CERM, 0.1µF, 25V, +/-10%, X7R, 0603	MuRata	GRM188R71E104KA01D	Y
C15	CAP, TANT, 47uF, 16V, +/-10%, 0.35 ohm, 6032-28 SMD	AVX	TPSC476K016R0350	Y
C18	CAP, CERM, 2200pF, 50V, +/-10%, X7R, 0603	MuRata	GRM188R71H222KA01D	Y
C20	CAP, CERM, 330pF, 50V, +/-5%, C0G/NP0, 0603	MuRata	GRM1885C1H331JA01D	Y
D1	DIODE TVS 250V 600W UNI 5% SMD	Littelfuse	P6SMB250A	Y
D2	Diode, Switching-Bridge, 600V, 0.8A, MiniDIP	Diodes Inc.	HD06-T	Y
D3	Diode, Silicon, 1000V, 1A, SOD-123	Comchip Technology	CGRM4007-G	Y
D4	Diode, Schottky, 100V, 1A, SMA	STMicroelectronics	STPS1H100A	Y
D5, D10	Diode, Zener, 13V, 200mW, SOD-323	Diodes Inc	DDZ13BS-7	Y
D6	Diode, Zener, 36V, 550mW, SMB	ON Semiconductor	1SMB5938BT3G	Y
D7, D8, D9	Diode, Schottky, 100V, 150 mA, SOD-323	STMicroelectronics	BAT46JFILM	Y
F1	Fuse, 500mA, 250V, Time-Lag, SMT	Littelfuse Inc	0443.500DR	Y
H1, H2, H5, H6	Standoff, Hex, 0.5"L #4-40 Nylon	Keystone	1902C	Y
H3, H4, H7, H8	Machine Screw, Round, #4-40 x 1/4, Nylon, Philips panhead	B&F Fastener Supply	NY PMS 440 0025 PH	Y
J1, J2	Conn Term Block, 2POS, 5.08mm PCB	Phoenix Contact	1715721	Y
L1, L2	Inductor, Radial Lead Inductors, Shielded, 4.7mH, 130mA, 12.20ohm, 7.5mm Radial,	TDK Corporation	TSL080RA-472JR13-PF	Y
LED+, LED-, TP7, TP8	Terminal, 22 Gauge Wire, Terminal, 22 Gauge Wire	3M	923345-02-C	Y
Q1	MOSFET, N-CH, 600V, 200mA, SOT-223	Fairchild Semiconductor	FQT1N60CTF_WS	Y
Q2	Transistor, NPN, 300V, 500mA, SOT-23	Diodes Inc.	MMBTA42-7-F	Y
Q3	MOSFET, N-CH, 650V, 800mA, IPAK	Infineon Technologies	SPU01N60C3	Y
R1	RES, 221 ohm, 1%, 0.25W, 1206	Vishay-Dale	CRCW1206221RFKEA	Y
R2, R7	RES, 200k ohm, 1%, 0.25W, 1206	Vishay-Dale	CRCW1206200KFKEA	Y
R3, R8	RES, 309k ohm, 1%, 0.25W, 1206	Vishay-Dale	CRCW1206309KFKEA	Y
R4, R12	RES, 10k ohm, 5%, 0.25W, 1206	Vishay-Dale	CRCW120610K0JNEA	Y
R13	RES, 33.0 ohm, 1%, 0.25W, 1206	Vishay-Dale	CRCW120633R0FKEA	Y
R14	RES, 10 ohm, 5%, 0.125W, 0805	Vishay-Dale	CRCW080510R0JNEA	Y
R15	RES, 10.0k ohm, 1%, 0.1W, 0603	Vishay-Dale	CRCW060310K0FKEA	Y
R19	RES, 10 ohm, 5%, 0.1W, 0603	Vishay-Dale	CRCW060310R0JNEA	Y
R20	RES, 1.91k ohm, 1%, 0.1W, 0603	Vishay-Dale	CRCW06031K91FKEA	Y
R21	RES, 2.70 ohm, 1%, 0.25W, 1206	Panasonic	ERJ-8RQF2R7V	Y

Designator	Description	Manufacturer	Part Number	RoHS
R22	RES, 10.7 ohm, 1%, 0.125W, 0805	Vishay-Dale	CRCW080510R7FKEA	Y
R23	RES, 324k ohm, 1%, 0.1W, 0603	Vishay-Dale	CRCW0603324KFKEA	Y
RT1	Current Limitor Inrush, 60Ohm, 20%, 5mm Raidal	Cantherm	MF72-060D5	Y
T1	FLBK TFR, 2.07 mH, Np=140T, Ns=26T, Na= 20T	Wurth Elektornik	750815040 REV 1	Y
TP9, TP10	Terminal, Turret, TH, Double	Keystone Electronics	1502-2	Y
VR1	Varistor 275V 55J 10mm DISC	EPCOS Inc	S10K275E2	Y

Transformer Design

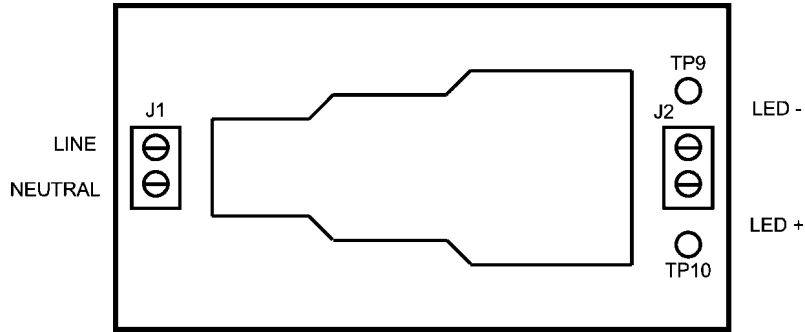
Mfg: Wurth Electronics, Part #: 750815040 Rev. 01



30139709

Parameter	Test Conditions	Value
D.C. Resistance (3-1)	20°C	1.91 Ω ± 10%
D.C. Resistance (6-4)	20°C	0.36 Ω ± 10%
D.C. Resistance (10-13)	20°C	0.12 Ω ± 10%
Inductance (3-1)	10 kHz, 100 mVAC	2.12 mH ± 10%
Inductance (6-4)	10 kHz, 100 mVAC	46.50 μH ± 10%
Inductance (10-13)	10 kHz, 100 mVAC	74.00 μH ± 10%
Leakage Inductance (3-1)	100 kHz, 100 mAVAC (tie 6+4, 10+13)	18.0 μH Typ., 22.60 μH Max.
Dielectric (1-13)	tie (3+4), 4500 VAC, 1 second	4500 VAC, 1 minute
Turns Ratio	(3-1):(6-4)	7:1 ± 1%
Turns Ratio	(3-1):(10:13)	5.384:1 ± 1%

Demo Board Wiring Overview

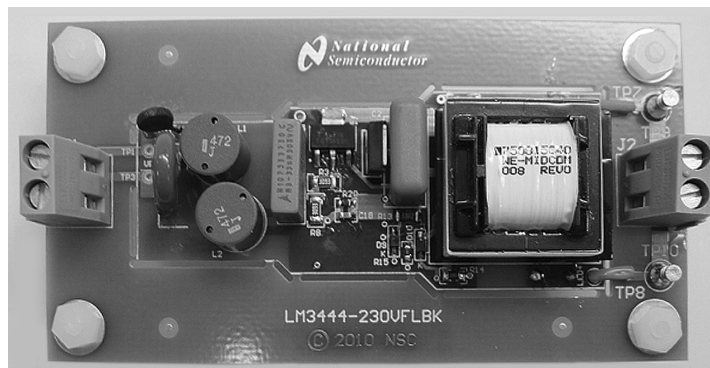


Wiring Connection Diagram

30139703

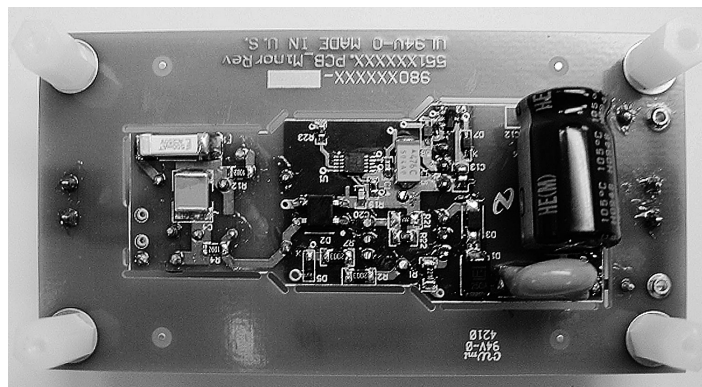
Test Point	Name	I/O	Description
TP10, J2-1	LED +	Output	LED Constant Current Supply Supplies voltage and constant-current to anode of LED string.
TP9, J2-2	LED -	Output	LED Return Connection (not GND) Connects to cathode of LED string. Do NOT connect to GND.
J1-1	LINE	Input	AC Line Voltage Connects directly to AC line of a 230VAC system.
J1-2	NEUTRAL	Input	AC Neutral Connects directly to AC neutral of a 230VAC system.

Demo Board Assembly



Top View

30139705

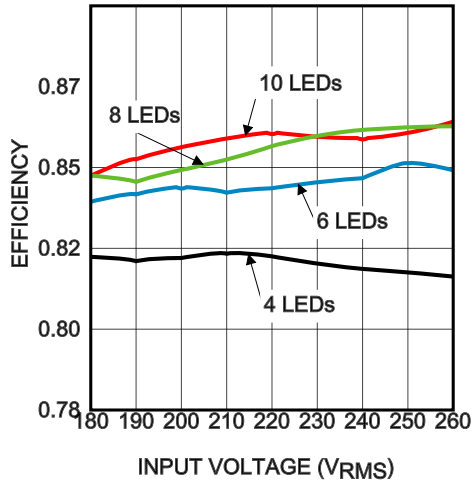


Bottom View

30139706

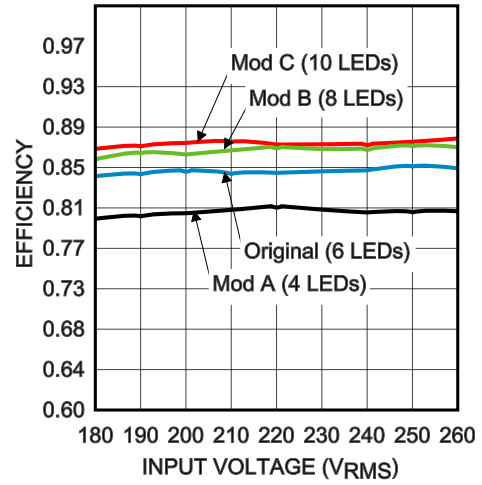
Typical Performance Characteristics (Note 1, Note 2, Note 3)

**Efficiency vs. Line Voltage
Original Circuit**



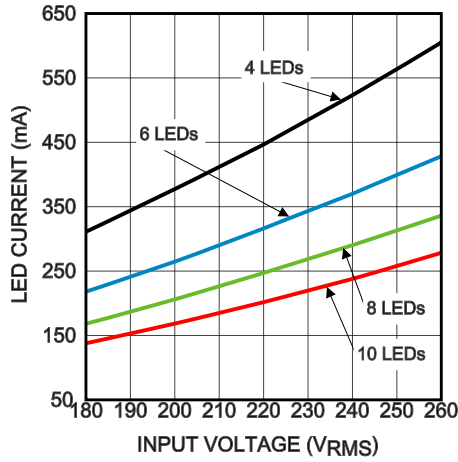
30139710

**Efficiency vs. Line Voltage
Modified Circuits**



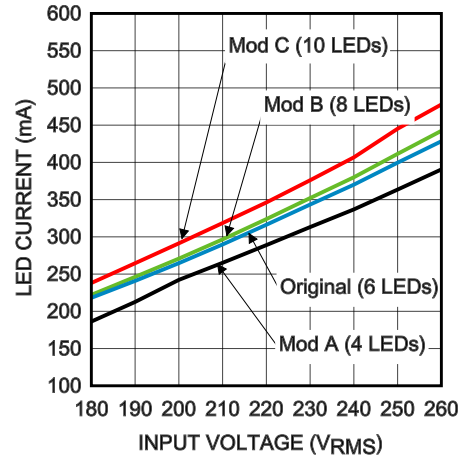
30139714

**LED Current vs. Line Voltage
Original Circuit**

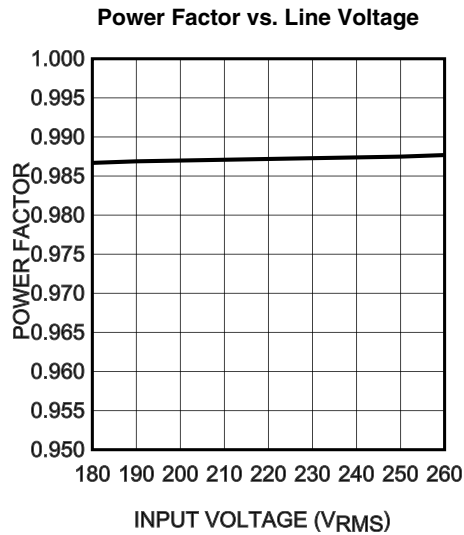


30139711

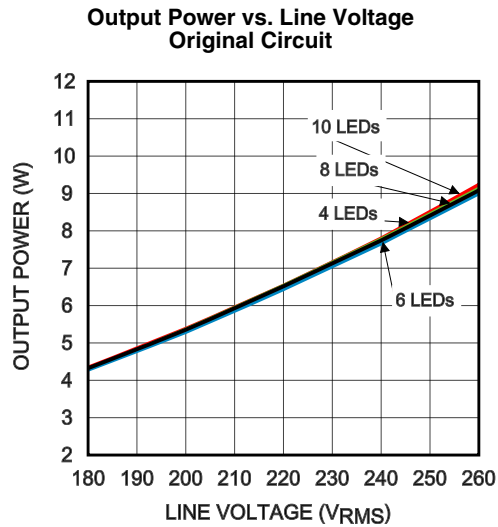
**LED Current vs. Line Voltage
Modified Circuits**



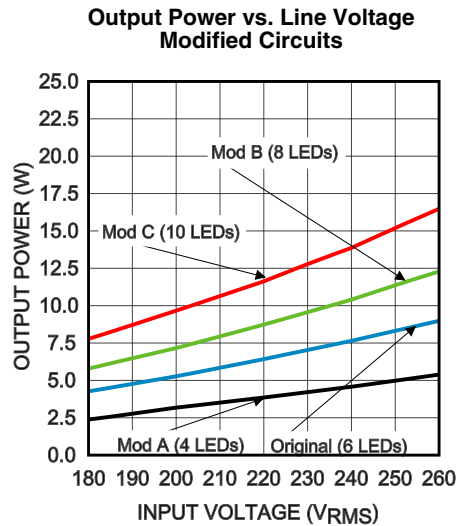
30139715



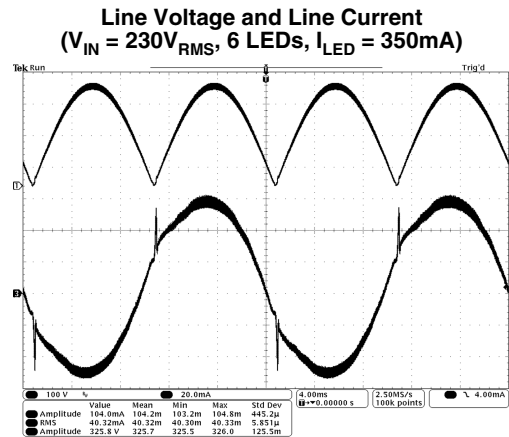
30139712



30139713

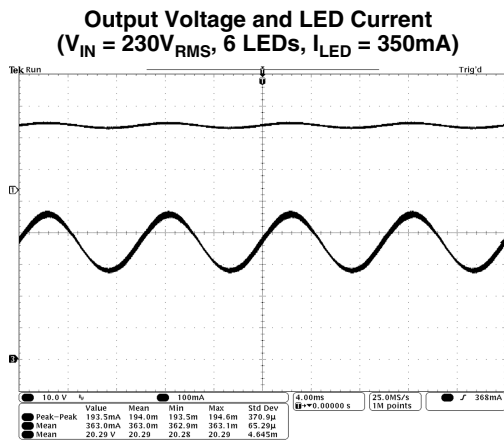


30139717



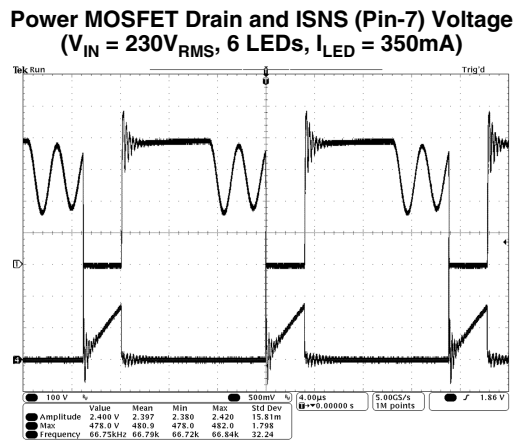
30139718

Ch1: Line Voltage (100 V/div); Ch3: Line Current (20 mA/div); Time (4 ms/div)



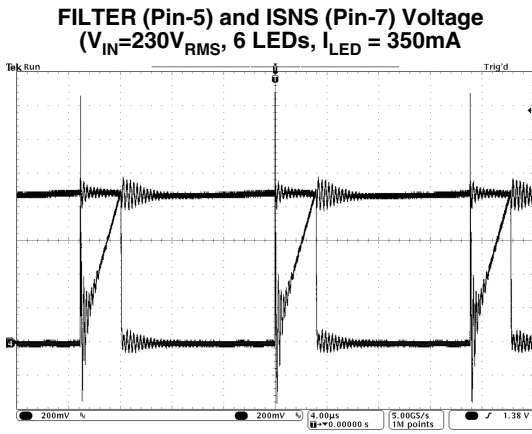
30139720

Ch1: Output Voltage (10 V/div); Ch3: LED Current (100 mA/div); Time (4 ms/div)



30139721

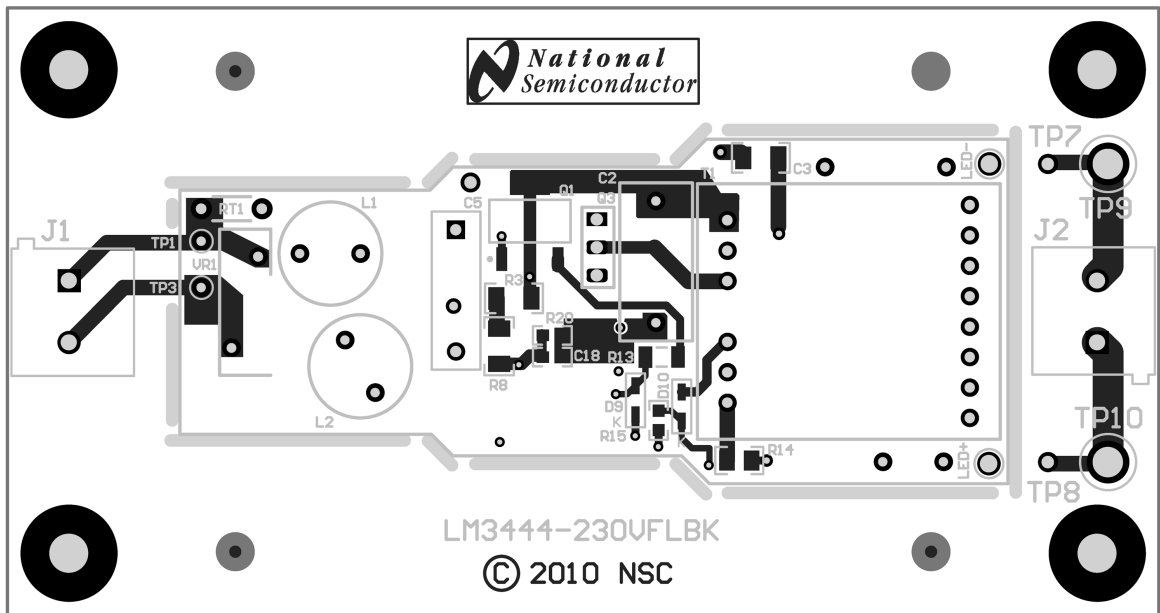
Ch1: Drain Voltage (100V/div); Ch4: ISNS Voltage (500 mV/div); Time (4 μs/div)



Ch1: FILTER Voltage (200 mV/div); ISNS Voltage (200 mV/div); Time (4 µs/div)

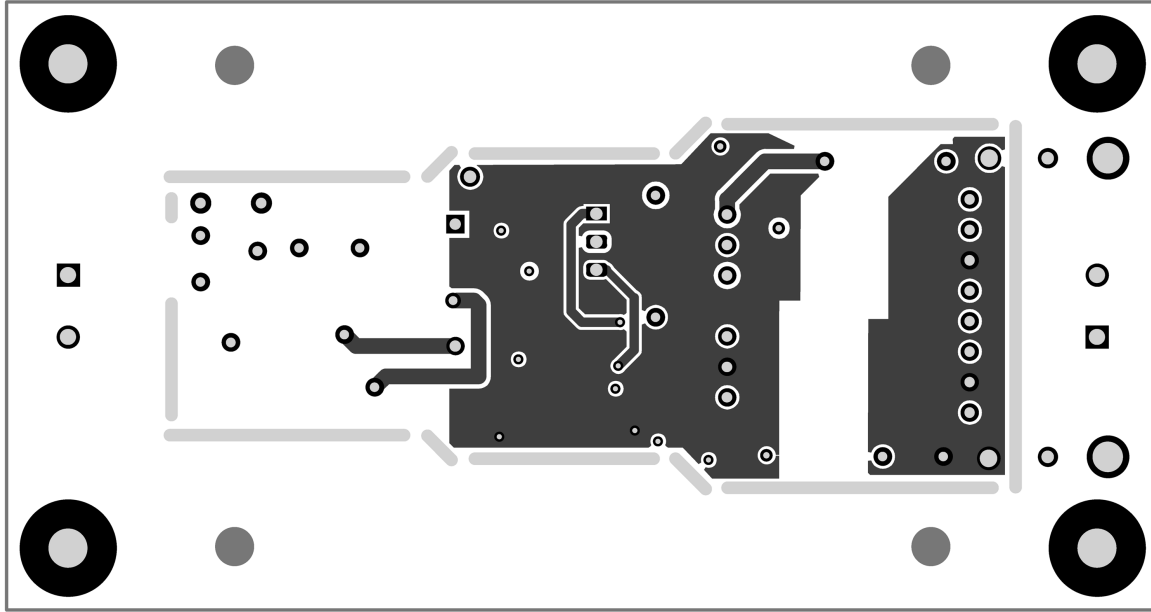
- Note 1:** Original Circuit (6 LEDs operating at 350mA): $R_{21} = 2.7\Omega$; Modification A (10 LEDs operating at 375mA): $R_{21} = 1.8\Omega$; Modification B (8 LEDs operating at 350mA): $R_{21} = 2.2\Omega$; Modification C (4 LEDs operating at 315mA): $R_{21} = 3.9\Omega$
- Note 2:** The output power can be varied to achieve desired LED current by interpolating R_{21} values between the maximum of 3.9Ω and minimum of 1.8Ω
- Note 3:** The maximum output voltage is clamped to 36 V. For operating LED string voltage > 36 V, replace D6 with suitable alternative

PCB Layout



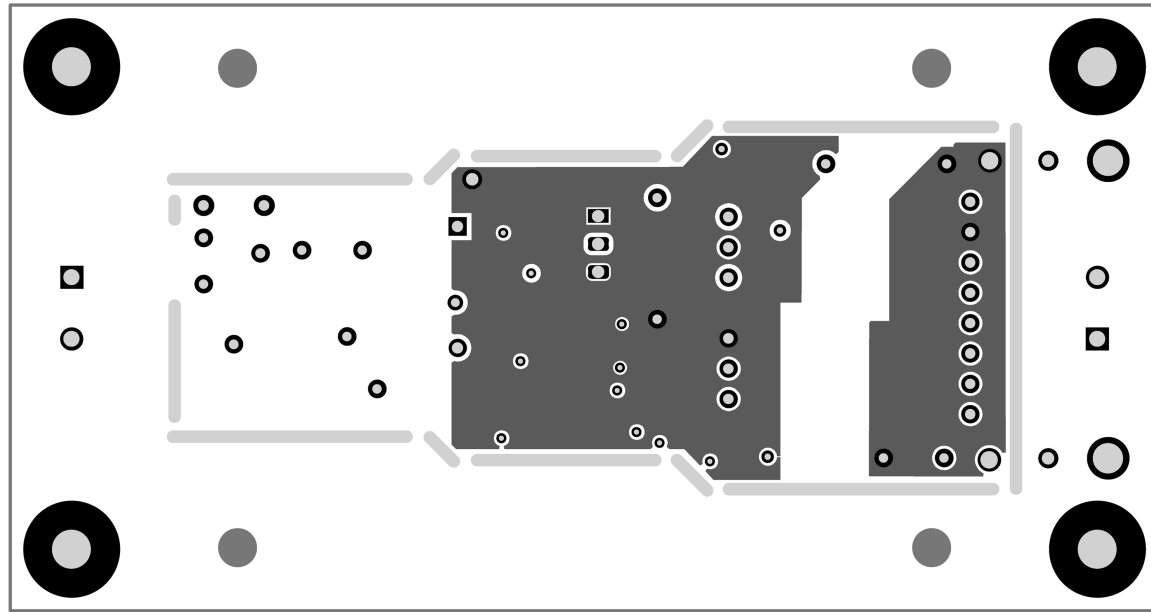
Top Layer

30139707



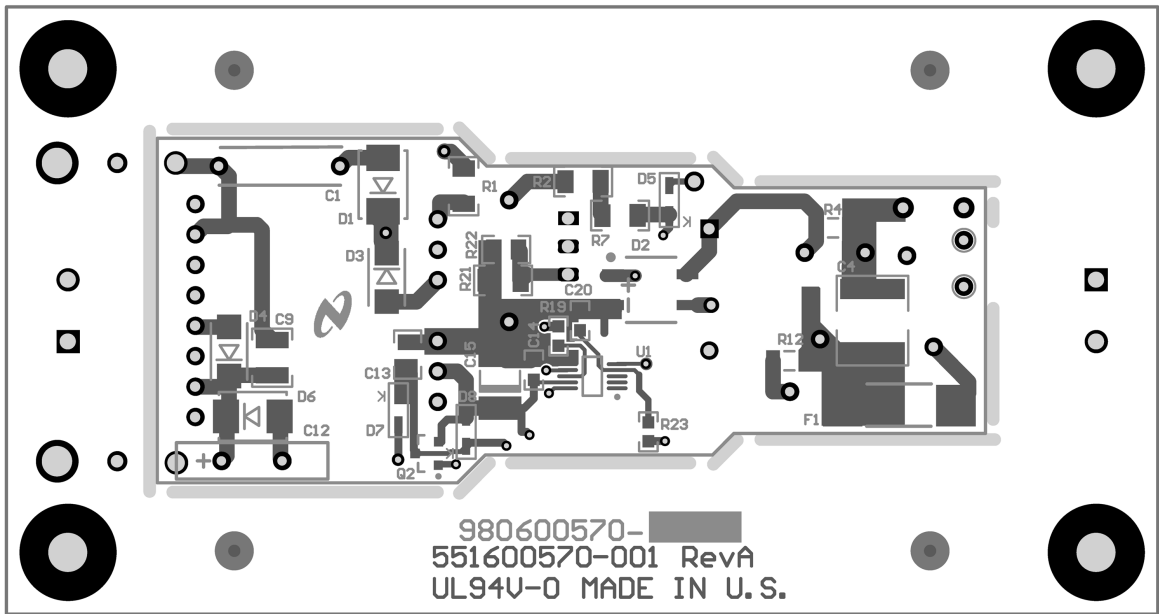
Top Middle Layer

30139740



Bottom Middle Layer

30139741



Bottom Layer

30139708

Experimental Results

The LED driver is designed to accurately emulate an incandescent light bulb and therefore behave as an emulated resistor. The resistor value is determined based on the LED string configuration and the desired output power. The circuit then operates in open-loop, with a fixed duty cycle based on a constant on-time and constant off-time that is set by selecting appropriate circuit components.

PERFORMANCE

In steady state, the LED string voltage is measured to be 21.55 V and the average LED current is measured as 347.5

mA. The 100 Hz current ripple flowing through the LED string was measured to be 194 mA_{pk-pk} at full load. The magnitude of the ripple is a function of the value of energy storage capacitors connected across the output. The ripple current can be reduced by increasing the value of energy storage capacitor or by increasing the LED string voltage.

The LED driver switching frequency is measured to be close to the specified 67 kHz. The circuit operates with a constant duty cycle of 0.21 and consumes near 9W of input power. The driver steady state performance for an LED string consisting of 6 series LEDs is summarized in the following table.

MEASURED EFFICIENCY AND LINE REGULATION (6 LEDs)

V _{IN} (V _{RMS})	I _{IN} (mA _{RMS})	P _{IN} (W)	V _{OUT} (V)	I _{LED} (mA)	P _{OUT} (W)	Efficiency (%)	Power Factor
180	30.65	5.42	20.59	219.40	4.52	83.3	0.9867
190	32.35	6.06	20.80	242.55	5.05	83.3	0.9869
200	34.21	6.75	21.00	267.37	5.62	83.2	0.9870
210	36.01	7.47	21.18	293.39	6.21	83.2	0.9871
220	37.74	8.20	21.37	320.18	6.84	83.3	0.9872
230	39.44	8.96	21.55	347.51	7.49	83.6	0.9873
240	41.22	9.76	21.72	375.52	8.15	83.6	0.9874
250	43.29	10.62	21.90	404.82	8.86	83.5	0.9875
260	45.06	11.57	22.07	436.75	9.64	83.3	0.9877

CURRENT THD

The LED driver is able to achieve close to unity power factor (PF ~ 0.98) which meets Energy Star requirements. This design also exhibits low current harmonics as a percentage of

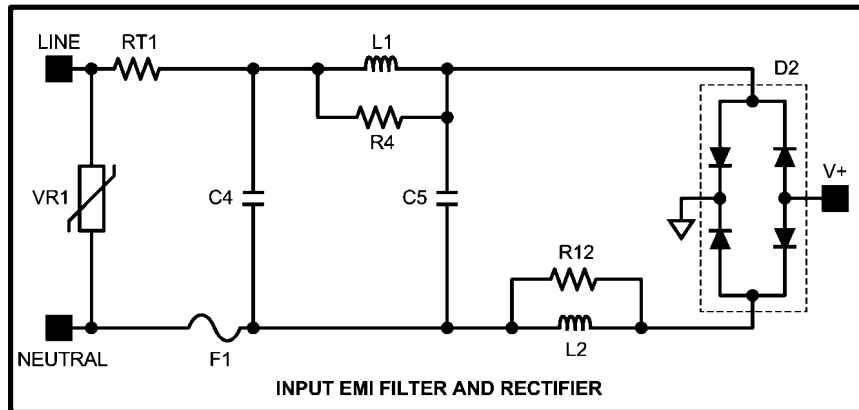
the fundamental current (as shown in the following table) and therefore meets the requirements of the IEC 61000-3-2 Class-3 standard. Total harmonic distortion was measured to be less than 1.2%.

MEASURED HARMONIC CURRENT

Harmonic	Class C Limit (mA)	Measured (mA)
2	0.78	0.022
3	11.61	0.125
5	3.90	0.11
7	2.73	0.105
9	1.95	0.11
11	1.73	0.15
13	1.73	0.093
15	1.73	0.071
17	1.73	0.154
19	1.73	0.165
21	1.73	0.065
23	1.73	0.065
25	1.73	0.08
27	1.73	0.084
29	1.73	0.065
31	1.73	0.07

Electromagnetic Interference (EMI)

The EMI input filter of this evaluation board is configured as shown in the following circuit diagram.

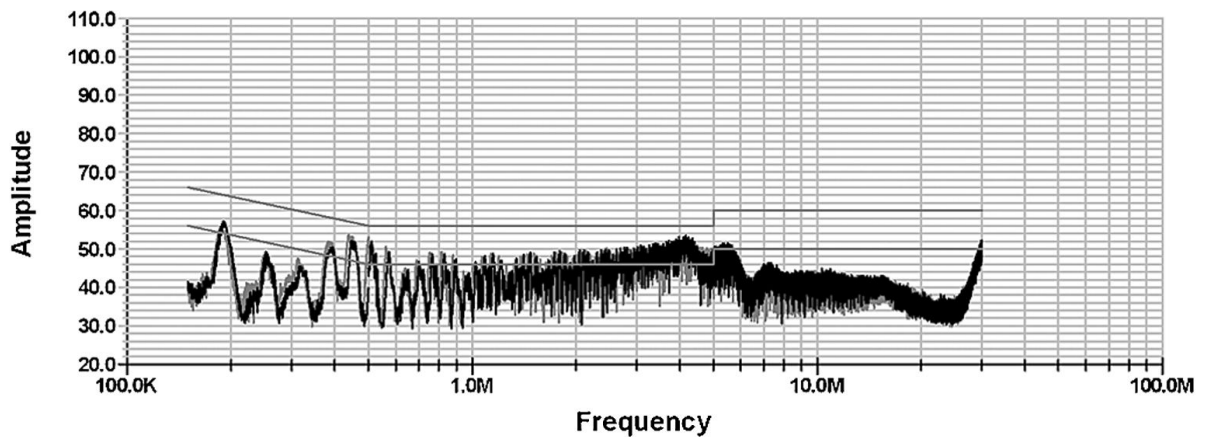


30139731

FIGURE 1. Input EMI Filter and Rectifier Circuit

In order to get a quick estimate of the EMI filter performance, only the PEAK conductive EMI scan was measured and the

data was compared to the Class B conducted EMI limits published in FCC – 47, section 15. (*Note 4*)



30139732

FIGURE 2. Peak Conductive EMI scan per CISPR-22, Class B Limits

Note 4: CISPR 15 compliance pending

Thermal Analysis

The board temperature was measured using an IR camera (HIS-3000, Wahl) while running under the following conditions:

$$V_{IN} = 230 V_{RMS}$$

$$I_{LED} = 348 \text{ mA}$$

$$\# \text{ of LEDs} = 6$$

$$P_{OUT} = 7.2 \text{ W}$$

The results are shown in the following figures.

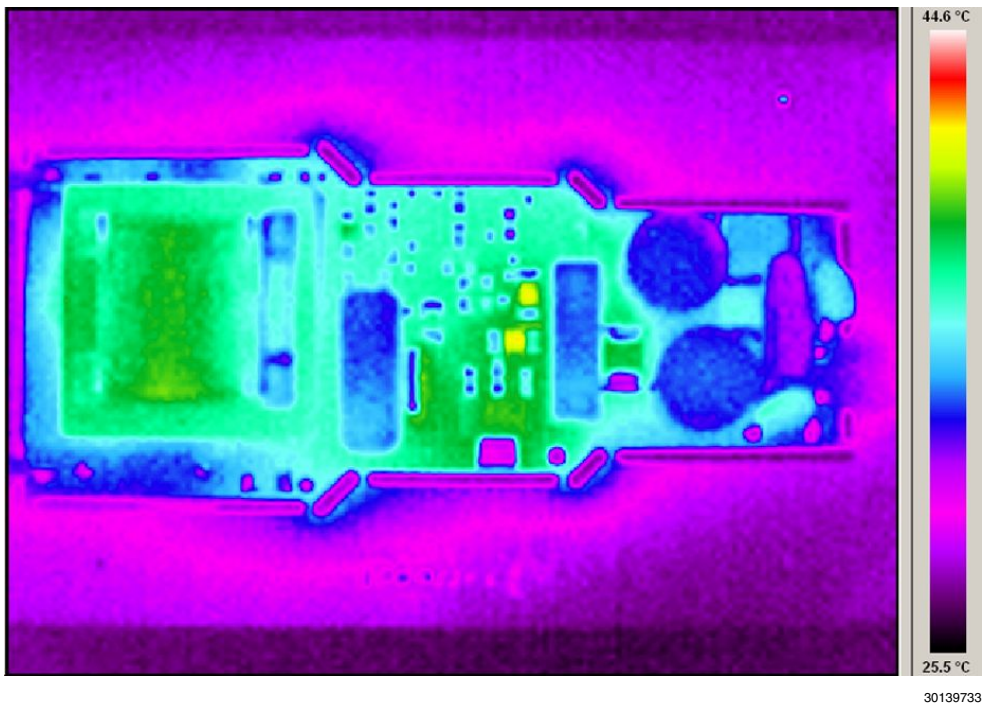


FIGURE 3. Top Side Thermal Scan

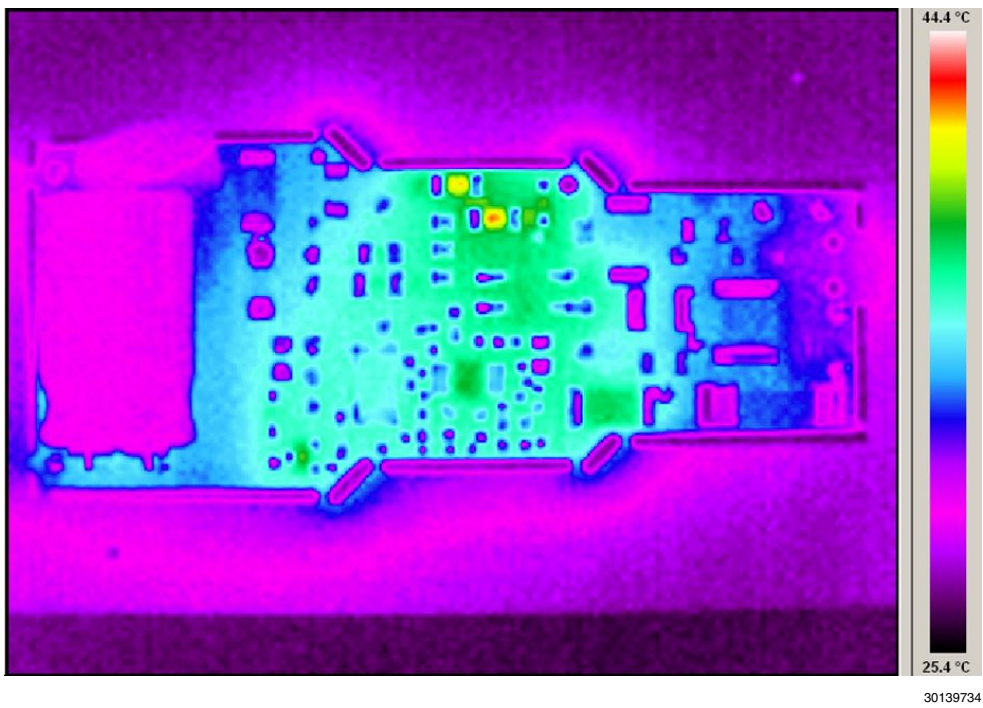


FIGURE 4. Bottom Side Thermal Scan

Circuit Analysis and Explanations

INJECTING LINE VOLTAGE INTO FILTER (ACHIEVING PFC > 0.98)

If a small portion (750mV to 1.00V) of line voltage is injected at FILTER of the LM3444, the circuit is essentially turned into a constant power flyback as shown in Figure 5.

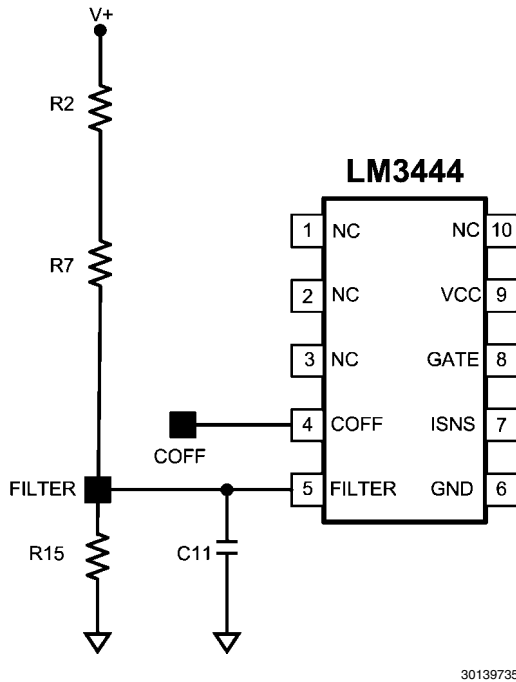


FIGURE 5. Line Voltage Injection Circuit

The LM3444 works as a constant off-time controller normally, but by injecting the $1.0V_{pk}$ rectified AC voltage into the FIL-

TER pin, the on-time can be made to be constant. With a DCM Flyback, Δi needs to increase as the input voltage line increases. Therefore a constant on-time (since inductor L is constant) can be obtained.

By using the line voltage injection technique, the FILTER pin has the voltage wave shape shown in Figure 6 on it. Voltage at V_{FILTER} peak should be kept below 1.25V. At 1.25V current limit is tripped. C11 is small enough not to distort the AC signal but adds a little filtering.

Although the on-time is probably never truly constant, it can be observed in Figure 7 how (by adding the rectified voltage) the on-time is adjusted.

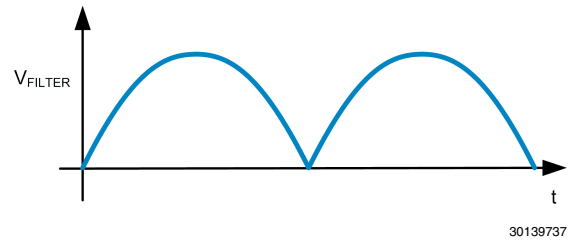


FIGURE 6. FILTER Waveform

For this evaluation board, the following resistor values are used:

$$R3 = R8 = 309 \text{ k}\Omega$$

$$R20 = 1.91 \text{ k}\Omega$$

Therefore the voltages observed on the FILTER pin will be as follows for listed input voltages:

$$\text{For } V_{IN} = 180V_{RMS}, V_{FILTER, Pk} = 0.78V$$

$$\text{For } V_{IN} = 230V_{RMS}, V_{FILTER, Pk} = 1.00V$$

$$\text{For } V_{IN} = 265V_{RMS}, V_{FILTER, Pk} = 1.15V$$

Using this technique, a power factor greater than 0.98 can be achieved without additional passive active power factor control (PFC) circuitry.

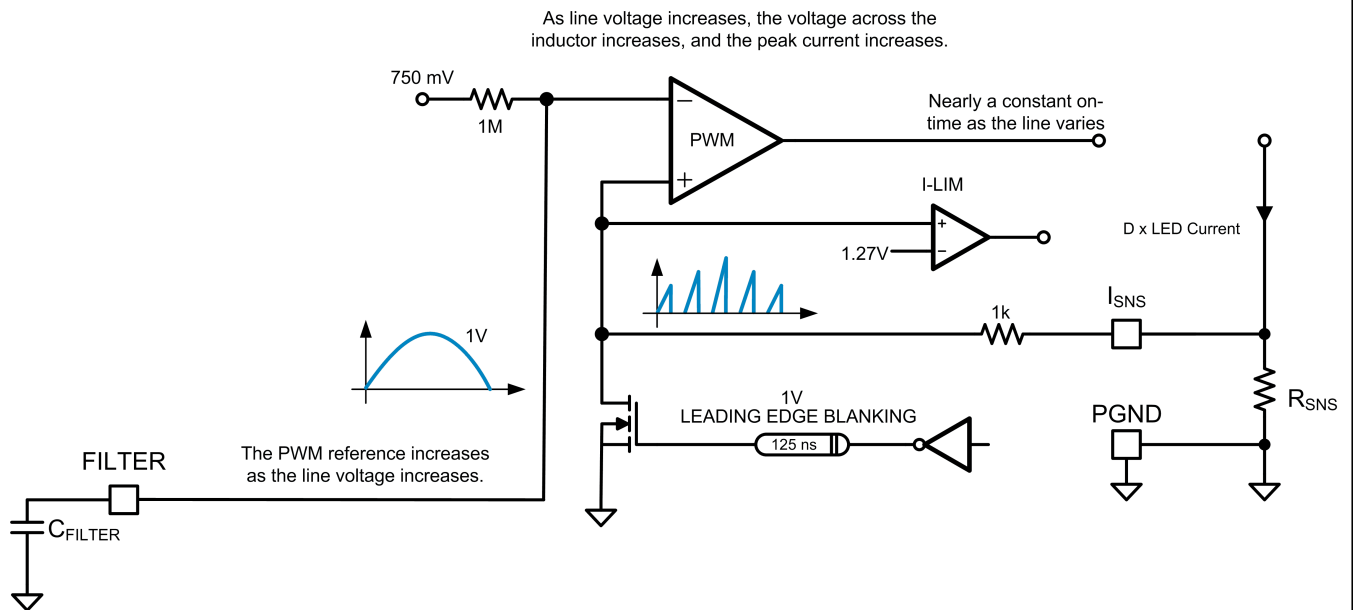


FIGURE 7. Typical Operation of FILTER Pin

Notes

AN-2097

Notes

For more National Semiconductor product information and proven design tools, visit the following Web sites at:
www.national.com

Products		Design Support	
Amplifiers	www.national.com/amplifiers	WEBENCH® Tools	www.national.com/webench
Audio	www.national.com/audio	App Notes	www.national.com/appnotes
Clock and Timing	www.national.com/timing	Reference Designs	www.national.com/refdesigns
Data Converters	www.national.com/adc	Samples	www.national.com/samples
Interface	www.national.com/interface	Eval Boards	www.national.com/evalboards
LVDS	www.national.com/lvds	Packaging	www.national.com/packaging
Power Management	www.national.com/power	Green Compliance	www.national.com/quality/green
Switching Regulators	www.national.com/switchers	Distributors	www.national.com/contacts
LDOs	www.national.com/lido	Quality and Reliability	www.national.com/quality
LED Lighting	www.national.com/led	Feedback/Support	www.national.com/feedback
Voltage References	www.national.com/vref	Design Made Easy	www.national.com/easy
PowerWise® Solutions	www.national.com/powerwise	Applications & Markets	www.national.com/solutions
Serial Digital Interface (SDI)	www.national.com/sdi	Mil/Aero	www.national.com/milaero
Temperature Sensors	www.national.com/tempensors	SolarMagic™	www.national.com/solarmagic
PLL/VCO	www.national.com/wireless	PowerWise® Design University	www.national.com/training

THE CONTENTS OF THIS DOCUMENT ARE PROVIDED IN CONNECTION WITH NATIONAL SEMICONDUCTOR CORPORATION ("NATIONAL") PRODUCTS. NATIONAL MAKES NO REPRESENTATIONS OR WARRANTIES WITH RESPECT TO THE ACCURACY OR COMPLETENESS OF THE CONTENTS OF THIS PUBLICATION AND RESERVES THE RIGHT TO MAKE CHANGES TO SPECIFICATIONS AND PRODUCT DESCRIPTIONS AT ANY TIME WITHOUT NOTICE. NO LICENSE, WHETHER EXPRESS, IMPLIED, ARISING BY ESTOPPEL OR OTHERWISE, TO ANY INTELLECTUAL PROPERTY RIGHTS IS GRANTED BY THIS DOCUMENT.

TESTING AND OTHER QUALITY CONTROLS ARE USED TO THE EXTENT NATIONAL DEEMS NECESSARY TO SUPPORT NATIONAL'S PRODUCT WARRANTY. EXCEPT WHERE MANDATED BY GOVERNMENT REQUIREMENTS, TESTING OF ALL PARAMETERS OF EACH PRODUCT IS NOT NECESSARILY PERFORMED. NATIONAL ASSUMES NO LIABILITY FOR APPLICATIONS ASSISTANCE OR BUYER PRODUCT DESIGN. BUYERS ARE RESPONSIBLE FOR THEIR PRODUCTS AND APPLICATIONS USING NATIONAL COMPONENTS. PRIOR TO USING OR DISTRIBUTING ANY PRODUCTS THAT INCLUDE NATIONAL COMPONENTS, BUYERS SHOULD PROVIDE ADEQUATE DESIGN, TESTING AND OPERATING SAFEGUARDS.

EXCEPT AS PROVIDED IN NATIONAL'S TERMS AND CONDITIONS OF SALE FOR SUCH PRODUCTS, NATIONAL ASSUMES NO LIABILITY WHATSOEVER, AND NATIONAL DISCLAIMS ANY EXPRESS OR IMPLIED WARRANTY RELATING TO THE SALE AND/OR USE OF NATIONAL PRODUCTS INCLUDING LIABILITY OR WARRANTIES RELATING TO FITNESS FOR A PARTICULAR PURPOSE, MERCHANTABILITY, OR INFRINGEMENT OF ANY PATENT, COPYRIGHT OR OTHER INTELLECTUAL PROPERTY RIGHT.

LIFE SUPPORT POLICY

NATIONAL'S PRODUCTS ARE NOT AUTHORIZED FOR USE AS CRITICAL COMPONENTS IN LIFE SUPPORT DEVICES OR SYSTEMS WITHOUT THE EXPRESS PRIOR WRITTEN APPROVAL OF THE CHIEF EXECUTIVE OFFICER AND GENERAL COUNSEL OF NATIONAL SEMICONDUCTOR CORPORATION. As used herein:

Life support devices or systems are devices which (a) are intended for surgical implant into the body, or (b) support or sustain life and whose failure to perform when properly used in accordance with instructions for use provided in the labeling can be reasonably expected to result in a significant injury to the user. A critical component is any component in a life support device or system whose failure to perform can be reasonably expected to cause the failure of the life support device or system or to affect its safety or effectiveness.

National Semiconductor and the National Semiconductor logo are registered trademarks of National Semiconductor Corporation. All other brand or product names may be trademarks or registered trademarks of their respective holders.

Copyright© 2011 National Semiconductor Corporation

For the most current product information visit us at www.national.com



National Semiconductor Americas Technical Support Center
 Email: support@nsc.com
 Tel: 1-800-272-9959

National Semiconductor Europe Technical Support Center
 Email: europe.support@nsc.com

National Semiconductor Asia Pacific Technical Support Center
 Email: ap.support@nsc.com

National Semiconductor Japan Technical Support Center
 Email: jpn.feedback@nsc.com