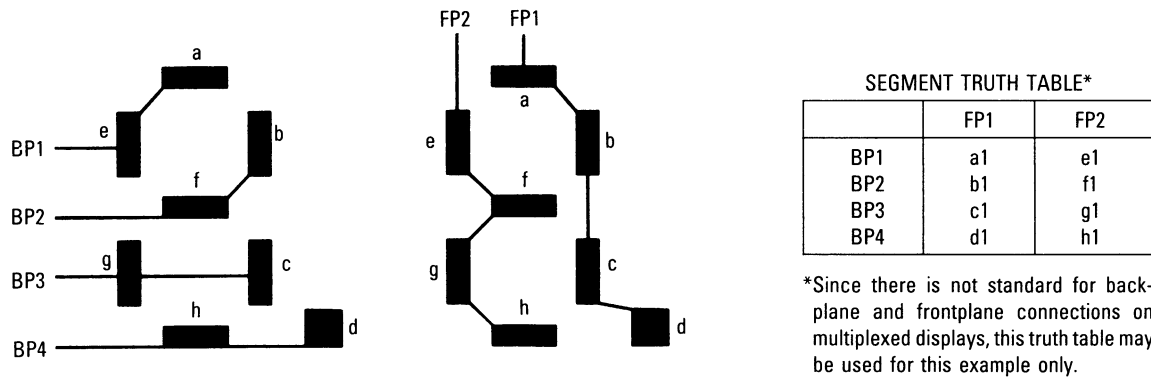


Errata to
MC68HC05L6
8-Bit Microcomputer with Liquid Crystal Driver
Circuitry
 ADI1254

Figures 6-6 and 6-7 should be replaced with the following figures.

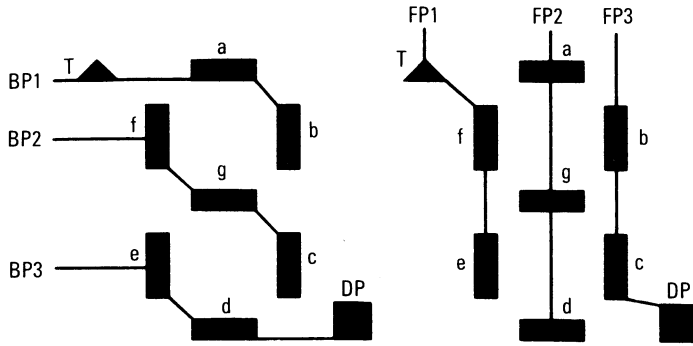


	FP1	FP2	FP3	FP4	FP23	FP24
BP1	a1	e1	a2	e2	a12	e12
BP2	b1	f1	b2	f2	b12	f12
BP3	c1	g1	c2	g2	c12	g12
BP4	d1	h1	d2	h2	d12	h12
	DIGIT 1		DIGIT 2		DIGIT 12		

Figure 6-6. Frontplane and Backplane Connections to a Multiplexed-by-Four, Seven-Segment LCD (Includes Decimal Point)

Freescale Semiconductor, Inc.





SEGMENT TRUTH TABLE*

	FP1	FP2	FP3
BP1	T1	a1	b1
BP2	f1	g1	c1
BP3	e1	d1	DP1

*Since there is no standard for backplane and frontplane connections on multiplexed displays, this truth table may be used for this example only.

	FP1	FP2	FP3	FP4	FP23	FP24	
BP1	T1	a1	b1	T2	a8	e8	
BP2	f1	g1	c1	f2	b8	f8	
BP3	e1	d1	DP1	e2	c8	g8	
	DIGIT 1			DIGIT 2			DIGIT 8

Figure 6-7. Frontplane and Backplane Connections to a Multiplexed-by-Three, Seven-Segment LCD (Includes Decimal Point and Annunciator)

Motorola reserves the right to make changes without further notice to any products herein to improve reliability, function or design. Motorola does not assume any liability arising out of the application or use of any product or circuit described herein; neither does it convey any license under its patent rights nor the rights of others. Motorola and are registered trademarks of Motorola, Inc. Motorola, Inc. is an Equal Employment Opportunity/Affirmative Action Employer.

Literature Distribution Centers:

USA: Motorola Literature Distribution; P.O. Box 20912; Phoenix, Arizona 85036.

EUROPE: Motorola Ltd.; European Literature Center; 88 Tanners Drive, Blakelands Milton Keynes, MK145BP, England.

ASIA PACIFIC: Motorola Semiconductors H.K. Ltd.; P.O. Box 80300; Cheung Sha Wan Post Office; Kowloon Hong Kong.



MOTOROLA

For More Information On This Product,
Go to: www.freescale.com