

PLEASE CHECK WWW.MOLEX.COM FOR LATEST PART INFORMATION

Part Number: [0022281048](#)
Status: **Active**
Description: 2.54mm (.100") Pitch KK® Header, Breakaway, Right Angle, with Friction Lock, 4 Circuits, 0.76µm (30µ") Gold (Au) Selective Plating, with Backwalls Removed

Documents:

3D Model	Product Specification PS-10-07 (PDF)
Packaging Specification (PDF)	RoHS Certificate of Compliance (PDF)
Drawing (PDF)	

Agency Certification

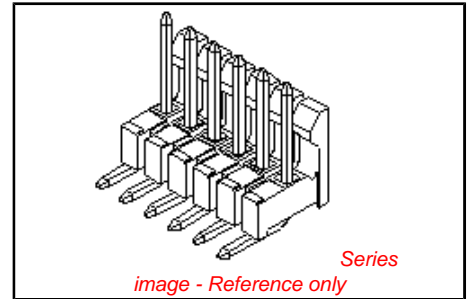
CSA	LR19980
UL	E29179

General

Product Family	PCB Headers
Series	42228
Application	Wire-to-Board
Comments	Backwalls Removed
Product Name	KK®

Physical

Breakaway	Yes
Circuits (Loaded)	4
Circuits (maximum)	4
Color - Resin	Black
Durability (mating cycles max)	100
Flammability	94V-0
Glow-Wire Compliant	No
Lock to Mating Part	Yes
Material - Metal	Brass
Material - Plating Mating	Gold
Material - Plating Termination	Tin
Material - Resin	Nylon
Number of Rows	1
Orientation	Right Angle
PC Tail Length (in)	0.120 In
PC Tail Length (mm)	3.05 mm
PCB Locator	No
PCB Retention	None
PCB Thickness Recommended (in)	0.062 In
PCB Thickness Recommended (mm)	1.60 mm
Packaging Type	Bag
Pitch - Mating Interface (in)	0.100 In
Pitch - Mating Interface (mm)	2.54 mm
Plating min: Mating (µin)	30
Plating min: Mating (µm)	0.75
Plating min: Termination (µin)	100
Plating min: Termination (µm)	2.5
Polarized to Mating Part	Yes
Polarized to PCB	No
Shrouded	Partial
Stackable	No
Temperature Range - Operating	0°C to +75°C
Termination Interface: Style	Through Hole



<p>EU RoHS ELV and RoHS Compliant REACH SVHC Contains SVHC: No Halogen-Free Status Not Reviewed</p>	<p>China RoHS</p>
--	--------------------------

Need more information on product environmental compliance?

Email productcompliance@molex.com
For a multiple part number RoHS Certificate of Compliance, [click here](#)

Please visit the [Contact Us](#) section for any non-product compliance questions.

Search Parts in this Series
[42228Series](#)

Mates With
[2695](#) , [6471](#) , [7880](#) , [4455](#) , [7720](#)

Electrical

Current - Maximum per Contact 4A
Voltage - Maximum 250V

Solder Process Data

Duration at Max. Process Temperature (seconds) 5
Lead-free Process Capability Wave Capable (TH only)
Max. Cycles at Max. Process Temperature 1
Process Temperature max. C 235

Material Info

Old Part Number 42228-0284

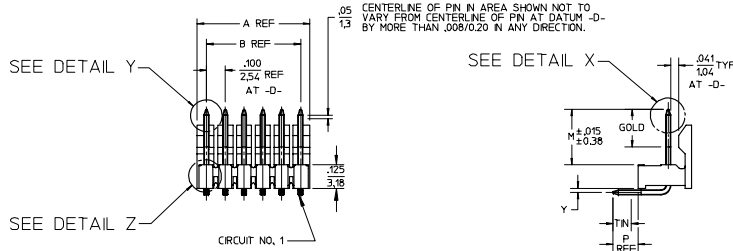
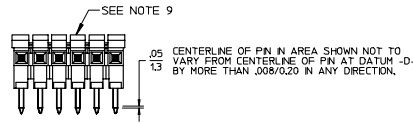
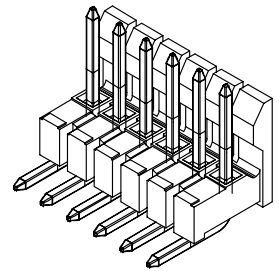
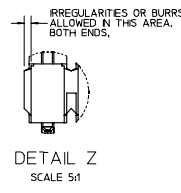
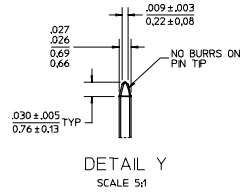
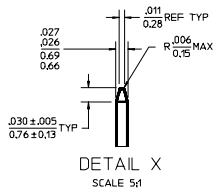
Reference - Drawing Numbers

Product Specification PS-10-07
Sales Drawing SD-42228-001, SD-42228-002

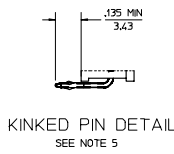
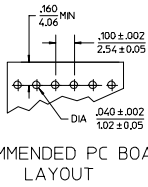
This document was generated on 04/12/2010

PLEASE CHECK WWW.MOLEX.COM FOR LATEST PART INFORMATION

CKTS	DM A	DM B
2	.200/5.08	.100/2.54
3	.300/7.62	.200/5.08
4	.400/10.16	.300/7.62
5	.500/12.70	.400/10.16
6	.600/15.24	.500/12.70
7	.700/17.78	.600/15.24
8	.800/20.32	.700/17.78
9	.900/22.86	.800/20.32
10	1.000/25.40	.900/22.86
11	1.100/27.94	1.000/25.40
12	1.200/30.48	1.100/27.94
13	1.300/33.02	1.200/30.48
14	1.400/35.56	1.300/33.02
15	1.500/38.10	1.400/35.56
16	1.600/40.64	1.500/38.10
17	1.700/43.18	1.600/40.64
18	1.800/45.72	1.700/43.18
19	1.900/48.26	1.800/45.72
20	2.000/50.80	1.900/48.26
21	2.100/53.34	2.000/50.80
22	2.200/55.88	2.100/53.34
23	2.300/58.42	2.200/55.88
24	2.400/60.96	2.300/58.42
25	2.500/63.50	2.400/60.96
26	2.600/66.04	2.500/63.50
27	2.700/68.58	2.600/66.04
28	2.800/71.12	2.700/68.58
29	2.900/73.66	2.800/71.12
30	3.000/76.20	2.900/73.66
31	3.100/78.74	3.000/76.20
32	3.200/81.28	3.100/78.74
33	3.300/83.82	3.200/81.28
34	3.400/86.36	3.300/83.82
35	3.500/88.90	3.400/86.36
36	3.600/91.44	3.500/88.90

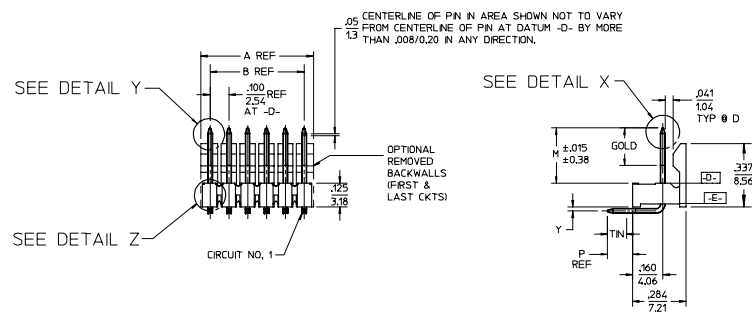
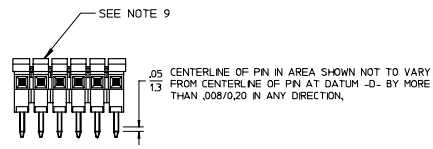
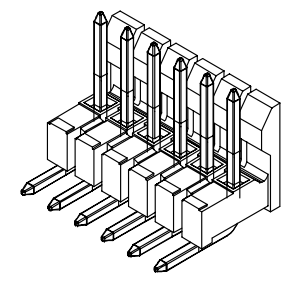
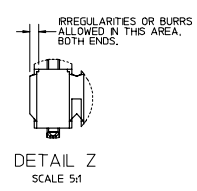
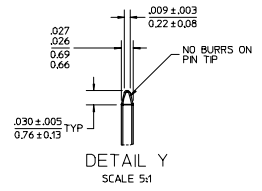
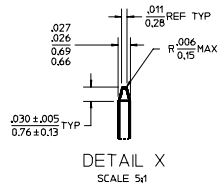


- NOTES:
- MATERIAL: GLASS FILLED NYLON, 94V-0, COLOR: BLACK
 - FINISH:
 - (154) OVERALL TIN: .000100/0.00254 MIN. OVER .000050/0.00127 MIN NICKEL.
 - (208) SELECT GOLD: .000015/0.00038 MIN. OVERALL NICKEL UNDERPLATE: .000050/0.00127 MIN. *SELECT TIN: .000100/0.00254 MIN.
 - (228) SELECT GOLD: .000030/0.00076 MIN. OVERALL NICKEL UNDERPLATE: .000050/0.00127 MIN. *SELECT TIN: .000100/0.00254 MIN.
 - PRODUCT SPECIFICATION: PS-10-07.
 - PACKAGING INFORMATION: SEE TABLES
 - KINK PIN SPECIFICATION: SEE SMES-42003
 - HEADERS ARE NOT STACKABLE ON .100/2.54 CENTERS.
 - SOLDERABILITY PER SMES-152.
 - PIN PUSH OUT FORCE: 3 LBS. MIN.
 - ABRASION MARKS ON BACK WALL SURFACE ARE PERMISSIBLE.

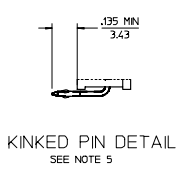
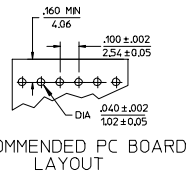


ADD NOTE 9	DESCRIPTION	QUALITY SYMBOLS	GENERAL TOLERANCES (UNLESS SPECIFIED)	DIMENSION STYLE	SCALE	DESIGN UNITS	THIRD ANGLE PROJECTION	TITLE	SHEET NO.
EC NO: UCP2006-1770	2006/02/01	▽=0	mm INCH	IN/MM	2:1	INCH	THIRD ANGLE PROJECTION	.100 FRICTION LOCK BREAKAWAY HEADER ASSY	1 OF 4
DRN:ABERR	2006/02/01	▽=0	4 PLACES ± --- ± ---	DRAWN BY JSCHAFFER	DATE 2004/03/18			MOLEX INCORPORATED	SD-42228-001
CHKD:SCHMIDT	2006/02/02		3 PLACES ± --- ± .010	CHECKED BY	DATE				
APPR:SMITH	2006/02/06		2 PLACES ± .25 ± .014	APPROVED BY	DATE				
			1 PLACE ± 0.36 ± ---	MARGULIS	2004/03/18				
			ANGULAR ±1/2°						
			DRAFT WHERE APPLICABLE MUST REMAIN WITHIN DIMENSIONS						
				SEE CHART					

CKTS	DM A	DM B
2	.200/5.08	.100/2.54
3	.300/7.62	.200/5.08
4	.400/10.16	.300/7.62
5	.500/12.70	.400/10.16
6	.600/15.24	.500/12.70
7	.700/17.78	.600/15.24
8	.800/20.32	.700/17.78
9	.900/22.86	.800/20.32
10	1.000/25.40	.900/22.86
11	1.100/27.94	1.000/25.40
12	1.200/30.48	1.100/27.94
13	1.300/33.02	1.200/30.48
14	1.400/35.56	1.300/33.02
15	1.500/38.10	1.400/35.56
16	1.600/40.64	1.500/38.10
17	1.700/43.18	1.600/40.64
18	1.800/45.72	1.700/43.18
19	1.900/48.26	1.800/45.72
20	2.000/50.80	1.900/48.26
21	2.100/53.34	2.000/50.80
22	2.200/55.88	2.100/53.34
23	2.300/58.42	2.200/55.88
24	2.400/60.96	2.300/58.42
25	2.500/63.50	2.400/60.96
26	2.600/66.04	2.500/63.50
27	2.700/68.58	2.600/66.04
28	2.800/71.12	2.700/68.58
29	2.900/73.66	2.800/71.12
30	3.000/76.20	2.900/73.66
31	3.100/78.74	3.000/76.20
32	3.200/81.28	3.100/78.74
33	3.300/83.82	3.200/81.28
34	3.400/86.36	3.300/83.82
35	3.500/88.90	3.400/86.36
36	3.600/91.44	3.500/88.90



- NOTES:
- MATERIAL: GLASS FILLED NYLON, 94V-0, COLOR: BLACK
 - FINISH:
 - (E4) *OVERALL TIN: .000100/0.00254 MN. OVER .000050/0.00127 MN NICKEL.
 - (Z08) SELECT GOLD: .000015/0.00038 MN. *SELECT TIN: .000100/0.00254 MN. OVERALL NICKEL UNDERPLATE: .000050/0.00127 MN.
 - (Z28) SELECT GOLD: .000030/0.00076 MN. *SELECT TIN: .000100/0.00254 MN. OVERALL NICKEL UNDERPLATE: .000050/0.00127 MN.
 - *THE PRIMARY SHIPPING CARTON WILL BE LABELED "COMPLIANT TO RoHS DIRECTIVE 2002/95/EC AND ELV ANNEX II OF DIRECTIVE 2000/53/EC". CARTONS WITHOUT THIS LABEL MAY CONTAIN PRODUCT WITH TIN-LEAD PLATING
 - PRODUCT SPECIFICATION: PS-01-07.
 - PACKAGING INFORMATION: SEE TABLES
 - KNK PIN SPECIFICATION: SEE SMES-42003
 - HEADERS ARE NOT STACKABLE ON .100/2.54 CENTERS.
 - SOLDERABILITY PER SMES-152.
 - PIN PUSH OUT FORCE: 3 LBS. MN.
 - ABRASION MARKS ON BACK WALL SURFACE ARE PERMISSIBLE.



ADD NOTE 9 EC NO: UCP2006-1710 DRAWN BY: 2004/02/01 CHKD BY: CHKD1 S/HIM/DT 2004/02/02 APPR: S/MLTH 2004/02/06	QUALITY SYMBOLS ▽=0 ▽=0	GENERAL TOLERANCES (UNLESS SPECIFIED)		DIMENSION STYLE		SCALE	DESIGN UNITS	THIRD ANGLE PROJECTION			
				IN/MM		2:1	INCH				
				mm	INCH	DATE		TITLE			
				ANGULAR ±1/2°		DRAWN BY JSCHAFFER 2004/03/18		.100 FRICTION LOCK BREAKAWAY HEADER ASSY			
DRAFT WHERE APPLICABLE MUST REMAIN WITHIN DIMENSIONS		MATERIAL NO. SEE CHART DOCUMENT NO. SD-42228-002		CHECKED BY KSAMIEC 2004/03/18 APPROVED BY MARGULIS 2004/03/18		MOLEX INCORPORATED		SHEET NO. 1 OF 6			
THIS DRAWING CONTAINS INFORMATION THAT IS PROPRIETARY TO MOLEX INCORPORATED AND SHOULD NOT BE USED WITHOUT WRITTEN PERMISSION											

A-42228-0213/0246						A-42228-0248/0281							
HEADER NUMBER:		41411				HEADER NUMBER:		41411					
PIN NUMBER:		42663-CKA154				PIN NUMBER:		42663-CKB208					
PIN LENGTH: L		.705/17.91				PIN LENGTH: L		.705/17.91					
MATING LENGTH: M		.295/7.49				MATING LENGTH: M		.295/7.49					
GOLD POINT: G		N/A				GOLD POINT: G		.140/3.56					
PC TAIL LENGTH: P		.120/3.05				PC TAIL LENGTH: P		.120/3.05					
TIN: T		OVERALL				TIN: T		.135/3.43					
DIMENSION Y		.022/0.56				DIMENSION Y		.022/0.56					
CKTS:		3-36				CKTS:		3-36					
KINKS:		NO				KINKS:		NO					
REMOVED BACKWALLS:		YES				REMOVED BACKWALLS:		YES					
VOIDED CKTS:		NONE				VOIDED CKTS:		NONE					
PACKAGING:		BULK 40873-0056				PACKAGING:		BULK 40873-0056					
CKTS	MATERIAL NUMBER	ENG NUMBER	CKTS	MATERIAL NUMBER	ENG NUMBER	CKTS	MATERIAL NUMBER	ENG NUMBER	CKTS	MATERIAL NUMBER	ENG NUMBER		
02			20	22-28-1206	A-42228-0230	02			20	22-28-1207	A-42228-0265		
03	22-28-1036	A-42228-0213	21	22-28-1216	A-42228-0231	03	22-28-1037	A-42228-0248	21	22-28-1217	A-42228-0266		
04	22-28-1046	A-42228-0214	22	22-28-1226	A-42228-0232	04	22-28-1047	A-42228-0249	22	22-28-1227	A-42228-0267		
05	22-28-1056	A-42228-0215	23	22-28-1236	A-42228-0233	05	22-28-1057	A-42228-0250	23	22-28-1237	A-42228-0268		
06	22-28-1066	A-42228-0216	24	22-28-1246	A-42228-0234	06	22-28-1067	A-42228-0251	24	22-28-1247	A-42228-0269		
07	22-28-1076	A-42228-0217	25	22-28-1256	A-42228-0235	07	22-28-1077	A-42228-0252	25	22-28-1257	A-42228-0270		
08	22-28-1086	A-42228-0218	26	22-28-1266	A-42228-0236	08	22-28-1087	A-42228-0253	26	22-28-1267	A-42228-0271		
09	22-28-1096	A-42228-0219	27	22-28-1276	A-42228-0237	09	22-28-1097	A-42228-0254	27	22-28-1277	A-42228-0272		
10	22-28-1106	A-42228-0220	28	22-28-1286	A-42228-0238	10	22-28-1107	A-42228-0255	28	22-28-1287	A-42228-0273		
11	22-28-1116	A-42228-0221	29	22-28-1296	A-42228-0239	11	22-28-1117	A-42228-0256	29	22-28-1297	A-42228-0274		
12	22-28-1126	A-42228-0222	30	22-28-1306	A-42228-0240	12	22-28-1127	A-42228-0257	30	22-28-1307	A-42228-0275		
13	22-28-1136	A-42228-0223	31	22-28-1316	A-42228-0241	13	22-28-1137	A-42228-0258	31	22-28-1317	A-42228-0276		
14	22-28-1146	A-42228-0224	32	22-28-1326	A-42228-0242	14	22-28-1147	A-42228-0259	32	22-28-1327	A-42228-0277		
15	22-28-1156	A-42228-0225	33	22-28-1336	A-42228-0243	15	22-28-1157	A-42228-0260	33	22-28-1337	A-42228-0278		
16	22-28-1166	A-42228-0226	34	22-28-1346	A-42228-0244	16	22-28-1167	A-42228-0261	34	22-28-1347	A-42228-0279		
17	22-28-1176	A-42228-0227	35	22-28-1356	A-42228-0245	17	22-28-1177	A-42228-0262	35	22-28-1357	A-42228-0280		
18	22-28-1186	A-42228-0228	36	22-28-1366	A-42228-0246	18	22-28-1187	A-42228-0263	36	22-28-1367	A-42228-0281		
19	22-28-1196	A-42228-0229				19	22-28-1197	A-42228-0264					
REV:		K				TITLE:				.100 FRICTION LOCK BREAKAWAY HEADER ASSY.			
DOCUMENT NUMBER:		SD- 42228 -002				CREATED / REVISED BY:		J. SCHAFFER 10/7/2003		CHECKED BY:		K.SAMIEC 10/14/2003	
						APPROVED BY:		Y. MARGULIS 10/21/03					
TEMPLATE FILENAME: PRODUCT_SPEC(SIZE_A)(V.1).DOC													

SHEET No.
- 2 -

A-42228-0283/0316						A-42228-0318/0351								
HEADER NUMBER:		41411				HEADER NUMBER:		41411						
PIN NUMBER:		42663-CKB228				PIN NUMBER:		42663-CNA154						
PIN LENGTH: L		.705/17.91				PIN LENGTH: L		.720/18.29						
MATING LENGTH: M		.295/7.49				MATING LENGTH: M		.295/7.49						
GOLD POINT: G		.140/3.56				GOLD POINT: G		N/A						
PC TAIL LENGTH: P		.120/3.05				PC TAIL LENGTH: P		.135/3.43						
TIN: T		.135/3.43				TIN: T		OVERALL						
DIMENSION Y		.022/0.56				DIMENSION Y		.022/0.56						
CKTS:		3-36				CKTS:		3-36						
KINKS:		NO				KINKS:		YES SMES-42003						
REMOVED BACKWALLS:		YES				REMOVED BACKWALLS:		YES						
VOIDED CKTS:		NONE				VOIDED CKTS:		NONE						
PACKAGING:		BULK 40873-0056				PACKAGING:		BULK 40873-0056						
CKTS	MATERIAL NUMBER	ENG NUMBER	CKTS	MATERIAL NUMBER	ENG NUMBER	CKTS	MATERIAL NUMBER	ENG NUMBER	CKTS	MATERIAL NUMBER	ENG NUMBER			
02			20	22-28-1208	A-42228-0300	02			20	22-28-1209	A-42228-0335			
03	22-28-1038	A-42228-0283	21	22-28-1218	A-42228-0301	03	22-28-1039	A-42228-0318	21	22-28-1219	A-42228-0336			
04	22-28-1048	A-42228-0284	22	22-28-1228	A-42228-0302	04	22-28-1049	A-42228-0319	22	22-28-1229	A-42228-0337			
05	22-28-1058	A-42228-0285	23	22-28-1238	A-42228-0303	05	22-28-1059	A-42228-0320	23	22-28-1239	A-42228-0338			
06	22-28-1068	A-42228-0286	24	22-28-1248	A-42228-0304	06	22-28-1069	A-42228-0321	24	22-28-1249	A-42228-0339			
07	22-28-1078	A-42228-0287	25	22-28-1258	A-42228-0305	07	22-28-1079	A-42228-0322	25	22-28-1259	A-42228-0340			
08	22-28-1088	A-42228-0288	26	22-28-1268	A-42228-0306	08	22-28-1089	A-42228-0323	26	22-28-1269	A-42228-0341			
09	22-28-1098	A-42228-0289	27	22-28-1278	A-42228-0307	09	22-28-1099	A-42228-0324	27	22-28-1279	A-42228-0342			
10	22-28-1108	A-42228-0290	28	22-28-1288	A-42228-0308	10	22-28-1109	A-42228-0325	28	22-28-1289	A-42228-0343			
11	22-28-1118	A-42228-0291	29	22-28-1298	A-42228-0309	11	22-28-1119	A-42228-0326	29	22-28-1299	A-42228-0344			
12	22-28-1128	A-42228-0292	30	22-28-1308	A-42228-0310	12	22-28-1129	A-42228-0327	30	22-28-1309	A-42228-0345			
13	22-28-1138	A-42228-0293	31	22-28-1318	A-42228-0311	13	22-28-1139	A-42228-0328	31	22-28-1319	A-42228-0346			
14	22-28-1148	A-42228-0294	32	22-28-1328	A-42228-0312	14	22-28-1149	A-42228-0329	32	22-28-1329	A-42228-0347			
15	22-28-1158	A-42228-0295	33	22-28-1338	A-42228-0313	15	22-28-1159	A-42228-0330	33	22-28-1339	A-42228-0348			
16	22-28-1168	A-42228-0296	34	22-28-1348	A-42228-0314	16	22-28-1169	A-42228-0331	34	22-28-1349	A-42228-0349			
17	22-28-1178	A-42228-0297	35	22-28-1358	A-42228-0315	17	22-28-1179	A-42228-0332	35	22-28-1359	A-42228-0350			
18	22-28-1188	A-42228-0298	36	22-28-1368	A-42228-0316	18	22-28-1189	A-42228-0333	36	22-28-1369	A-42228-0351			
19	22-28-1198	A-42228-0299				19	22-28-1199	A-42228-0334						
REV:		K				TITLE:		.100 FRICTION LOCK BREAKAWAY HEADER ASSY.				SHEET No.		
												- 3 -		
DOCUMENT NUMBER:			CREATED / REVISED BY:			CHECKED BY:			APPROVED BY:					
SD- 42228 -002			J. SCHAFER 10/7/2003			K.SAMIEC 10/14/2003			Y. MARGULIS 10/21/03					
<small>TEMPLATE FILENAME: PRODUCT_SPEC(SIZE_A)(V.1).DOC</small>														

--

A-42228-0422/0454					
HEADER NUMBER:		41411			
PIN NUMBER:		42663-CKB228			
PIN LENGTH: L		.705/17.91			
MATING LENGTH: M		.295/7.49			
GOLD POINT: G		.140/3.56			
PC TAIL LENGTH: P		.120/3.05			
TIN: T		.135/3.43			
DIMENSION Y		.022/0.56			
CKTS:		3-36			
KINKS:		NO			
REMOVED BACKWALLS:		YES			
VOIDED CKTS:		3			
PACKAGING:		BULK 40873-0056			
CKTS	MATERIAL NUMBER	ENG NUMBER	CKTS	MATERIAL NUMBER	ENG NUMBER
02			20		A-42228-0439
03		A-42228-0422	21		A-42228-0440
04	22-29-1041	A-42228-0423	22		A-42228-0441
05		A-42228-0424	23		A-42228-0442
06		A-42228-0425	24		A-42228-0443
07		A-42228-0426	25		A-42228-0444
08		A-42228-0427	26		A-42228-0445
09		A-42228-0428	27		A-42228-0446
10		A-42228-0429	28		A-42228-0447
11		A-42228-0430	29		A-42228-0448
12		A-42228-0431	30		A-42228-0449
13		A-42228-0432	31		A-42228-0450
14		A-42228-0433	32		A-42228-0451
15		A-42228-0434	33		A-42228-0452
16		A-42228-0435	34		A-42228-0453
17		A-42228-0436	35		A-42228-0454
18		A-42228-0437	36		A-42228-0455
19		A-42228-0438			

A-42228-0456/0490					
HEADER NUMBER:		41411			
PIN NUMBER:		42663-CNB208			
PIN LENGTH: L		.720/18.29			
MATING LENGTH: M		.295/7.49			
GOLD POINT: G		.140/3.56			
PC TAIL LENGTH: P		.135/3.43			
TIN: T		.135/3.43			
DIMENSION Y		.022/0.56			
CKTS:		2-36			
KINKS:		YES SMES-42003			
REMOVED BACKWALLS:		NO			
VOIDED CKTS:		2			
PACKAGING:		BULK 40873-0056			
CKTS	MATERIAL NUMBER	ENG NUMBER	CKTS	MATERIAL NUMBER	ENG NUMBER
02		A-42228-0456	20	22-29-1204	A-42228-0474
03	22-29-1034	A-42228-0457	21	22-29-1214	A-42228-0475
04	22-29-1044	A-42228-0458	22	22-29-1224	A-42228-0476
05	22-29-1054	A-42228-0459	23	22-29-2234	A-42228-0477
06	22-29-1064	A-42228-0460	24	22-29-1244	A-42228-0478
07	22-29-1074	A-42228-0461	25	22-29-1254	A-42228-0479
08	22-29-1084	A-42228-0462	26	22-29-1264	A-42228-0480
09	22-29-1094	A-42228-0463	27	22-29-1274	A-42228-0481
10	22-29-1104	A-42228-0464	28	22-29-1284	A-42228-0482
11	22-29-1114	A-42228-0465	29	22-29-1294	A-42228-0483
12	22-29-1124	A-42228-0466	30	22-29-1304	A-42228-0484
13	22-29-1134	A-42228-0467	31	22-29-1314	A-42228-0485
14	22-29-1144	A-42228-0468	32	22-29-1324	A-42228-0486
15	22-29-1154	A-42228-0469	33	22-29-1334	A-42228-0487
16	22-29-1164	A-42228-0470	34	22-29-1344	A-42228-0488
17	22-29-1174	A-42228-0471	35	22-29-1354	A-42228-0489
18	22-29-1184	A-42228-0472	36	22-29-1364	A-42228-0490
19	22-29-1194	A-42228-0473			

REV: K	TITLE: .100 FRICTION LOCK BREAKAWAY HEADER ASSY.	SHEET No. - 4 -
DOCUMENT NUMBER: SD- 42228 -002	CREATED / REVISED BY: J. SCHAFER 10/7/2003	CHECKED BY: K.SAMIEC 10/14/2003
	APPROVED BY: Y. MARGULIS 10/21/03	

TEMPLATE FILENAME: PRODUCT_SPEC(SIZE_A)(V.1).DOC

A-42228-0491/0524						A-42228-0525/0537					
HEADER NUMBER:			41411			HEADER NUMBER:			41411		
PIN NUMBER:			42663-CNA154			PIN NUMBER:			42663-CNA154		
PIN LENGTH: L			.720/18.29			PIN LENGTH: L			.720/18.29		
MATING LENGTH: M			.295/7.49			MATING LENGTH: M			.295/7.49		
GOLD POINT: G			N/A			GOLD POINT: G			N/A		
PC TAIL LENGTH: P			.135/3.43			PC TAIL LENGTH: P			.135/3.43		
TIN: T			OVERALL			TIN: T			OVERALL		
DIMENSION Y			.022/0.56			DIMENSION Y			.022/0.56		
CKTS:			3-36			CKTS:			24-36		
KINKS:			YES SMES-43703			KINKS:			YES SMES-42003		
REMOVED BACKWALLS:			YES			REMOVED BACKWALLS:			NO		
VOIDED CKTS:			NONE			VOIDED CKTS:			5, 7, 11,13,16, 20, 24		
PACKAGING:			BULK 40873-0056			PACKAGING:			BULK 40873-0056		
CKTS	MATERIAL NUMBER	ENG NUMBER	CKTS	MATERIAL NUMBER	ENG NUMBER	CKTS	MATERIAL NUMBER	ENG NUMBER	CKTS	MATERIAL NUMBER	ENG NUMBER
02			20		A-42228-0508	02			20		
03		A-42228-0491	21		A-42228-0509	03			21		
04		A-42228-0492	22		A-42228-0510	04			22		
05	42228-0493	A-42228-0493	23		A-42228-0511	05			23		
06	42228-0494	A-42228-0494	24		A-42228-0512	06			24	42228-0525	A-42228-0525
07	42228-0495	A-42228-0495	25		A-42228-0513	07			25	42228-0526	A-42228-0526
08		A-42228-0496	26		A-42228-0514	08			26	42228-0527	A-42228-0527
09		A-42228-0497	27		A-42228-0515	09			27	42228-0528	A-42228-0528
10		A-42228-0498	28		A-42228-0516	10			28	42228-0529	A-42228-0529
11	42228-0499	A-42228-0499	29		A-42228-0517	11			29	42228-0530	A-42228-0530
12		A-42228-0500	30		A-42228-0518	12			30	42228-0531	A-42228-0531
13		A-42228-0501	31		A-42228-0519	13			31	42228-0532	A-42228-0532
14		A-42228-0502	32		A-42228-0520	14			32	42228-0533	A-42228-0533
15		A-42228-0503	33		A-42228-0521	15			33	42228-0534	A-42228-0534
16		A-42228-0504	34		A-42228-0522	16			34	42228-0535	A-42228-0535
17		A-42228-0505	35		A-42228-0523	17			35	42228-0536	A-42228-0536
18		A-42228-0506	36		A-42228-0524	18			36	42228-0537	A-42228-0537
19		A-42228-0507				19					

REV:		TITLE:	SHEET No.
K		.100 FRICTION LOCK BREAKAWAY HEADER ASSY.	- 5 -
DOCUMENT NUMBER:	CREATED / REVISED BY:	CHECKED BY:	APPROVED BY:
SD- 42228 -002	J. SCHAFER 10/7/2003	K.SAMIEC 10/14/2003	Y. MARGULIS 10/21/03

TEMPLATE FILENAME: PRODUCT_SPEC(SIZE_A)(V.1).DOC

A-42228-0538/0566

HEADER NUMBER:	41411
PIN NUMBER:	42663-CNA154
PIN LENGTH: L	.720/18.29
MATING LENGTH: M	.295/7.49
GOLD POINT: G	N/A
PC TAIL LENGTH: P	.135/3.43
TIN: T	OVERALL
DIMENSION Y	.022/0.56
CKTS:	8-36
KINKS:	YES SMES-42003
REMOVED BACKWALLS:	NO
VOIDED CKTS:	8
PACKAGING:	BULK 40873-0056

CKTS	MATERIAL NUMBER	ENG NUMBER	CKTS	MATERIAL NUMBER	ENG NUMBER
02			20	42228-0550	A-42228-0550
03			21	42228-0551	A-42228-0551
04			22	42228-0552	A-42228-0552
05			23	42228-0553	A-42228-0553
06			24	42228-0554	A-42228-0554
07			25	42228-0555	A-42228-0555
08	42228-0538	A-42228-0538	26	42228-0556	A-42228-0556
09	42228-0539	A-42228-0539	27	42228-0557	A-42228-0557
10	42228-0540	A-42228-0540	28	42228-0558	A-42228-0558
11	42228-0541	A-42228-0541	29	42228-0559	A-42228-0559
12	42228-0542	A-42228-0542	30	42228-0560	A-42228-0560
13	42228-0543	A-42228-0543	31	42228-0561	A-42228-0561
14	42228-0544	A-42228-0544	32	42228-0562	A-42228-0562
15	42228-0545	A-42228-0545	33	42228-0563	A-42228-0563
16	42228-0546	A-42228-0546	34	42228-0564	A-42228-0564
17	42228-0547	A-42228-0547	35	42228-0565	A-42228-0565
18	42228-0548	A-42228-0548	36	42228-0566	A-42228-0566
19	42228-0549	A-42228-0549			

REV: K	TITLE: .100 FRICTION LOCK BREAKAWAY HEADER ASSY.	SHEET No. - 6 -
DOCUMENT NUMBER: SD- 42228 -002	CREATED / REVISED BY: J. SCHAFER 10/7/2003	CHECKED BY: K.SAMIEC 10/14/2003
APPROVED BY: Y. MARGULIS 10/21/03		

TEMPLATE FILENAME: PRODUCT_SPEC(SIZE_A)(V.1).DOC