

PLEASE CHECK WWW.MOLEX.COM FOR LATEST PART INFORMATION

Part Number: [0022281120](#)
Status: **Active**
Description: 2.54mm (.100") Pitch KK® Header, Breakaway, Right Angle, with Friction Lock, 12 Circuits, Tin (Sn) Plating

Documents:

3D Model	Product Specification PS-10-07 (PDF)
Packaging Specification (PDF)	RoHS Certificate of Compliance (PDF)
Drawing (PDF)	

Agency Certification

CSA	LR19980
UL	E29179

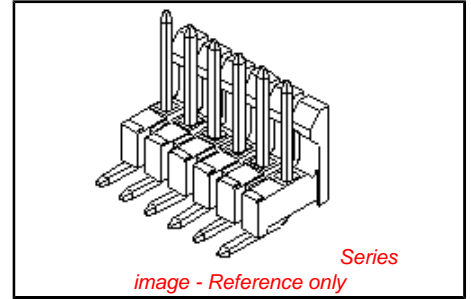
General

Product Family	PCB Headers
Series	42228
Application	Wire-to-Board
Product Name	KK®

Physical

Breakaway	Yes
Circuits (Loaded)	12
Circuits (maximum)	12
Color - Resin	Black
Durability (mating cycles max)	25
Flammability	94V-0
Glow-Wire Compliant	No
Lock to Mating Part	Yes
Material - Metal	Brass
Material - Plating Mating	Tin
Material - Plating Termination	Tin
Material - Resin	Nylon
Number of Rows	1
Orientation	Right Angle
PC Tail Length (in)	0.120 In
PC Tail Length (mm)	3.05 mm
PCB Locator	No
PCB Retention	None
PCB Thickness Recommended (in)	0.062 In
PCB Thickness Recommended (mm)	1.60 mm
Packaging Type	Bag
Pitch - Mating Interface (in)	0.100 In
Pitch - Mating Interface (mm)	2.54 mm
Plating min: Mating (µin)	100
Plating min: Mating (µm)	2.5
Plating min: Termination (µin)	100
Plating min: Termination (µm)	2.5
Polarized to Mating Part	Yes
Polarized to PCB	No
Shrouded	Partial
Stackable	No
Temperature Range - Operating	0°C to +75°C
Termination Interface: Style	Through Hole

Electrical



<p>EU RoHS ELV and RoHS Compliant REACH SVHC Contains SVHC: No Halogen-Free Status Not Reviewed</p>	<p>China RoHS</p>
--	--------------------------

Need more information on product environmental compliance?

Email productcompliance@molex.com
 For a multiple part number RoHS Certificate of Compliance, [click here](#)

Please visit the [Contact Us](#) section for any non-product compliance questions.

Search Parts in this Series
[42228Series](#)

Mates With
[2695](#) , [6471](#) , [7880](#) , [4455](#) , [7720](#)

Current - Maximum per Contact 4A
Voltage - Maximum 250V

Solder Process Data

Duration at Max. Process Temperature (seconds) 5
Lead-free Process Capability Wave Capable (TH only)
Max. Cycles at Max. Process Temperature 1
Process Temperature max. C 235

Material Info

Old Part Number 42228-0012

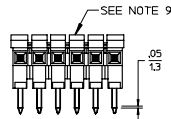
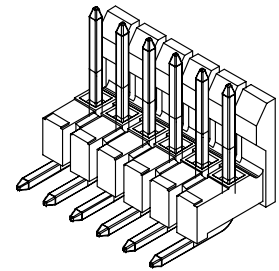
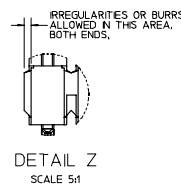
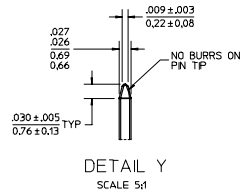
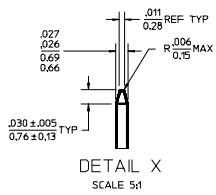
Reference - Drawing Numbers

Product Specification PS-10-07
Sales Drawing SD-42228-001, SD-42228-002, SD-42228-003

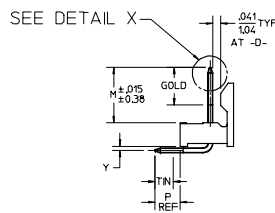
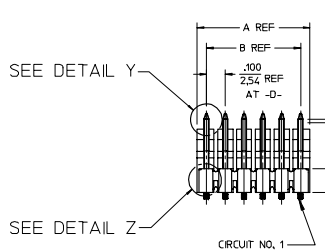
This document was generated on 03/22/2010

PLEASE CHECK WWW.MOLEX.COM FOR LATEST PART INFORMATION

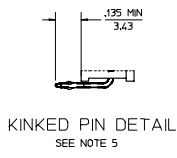
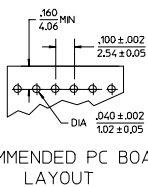
CKTS	DM A	DM B
2	.200/5.08	.100/2.54
3	.300/7.62	.200/5.08
4	.400/10.16	.300/7.62
5	.500/12.70	.400/10.16
6	.600/15.24	.500/12.70
7	.700/17.78	.600/15.24
8	.800/20.32	.700/17.78
9	.900/22.86	.800/20.32
10	1.000/25.40	.900/22.86
11	1.100/27.94	1.000/25.40
12	1.200/30.48	1.100/27.94
13	1.300/33.02	1.200/30.48
14	1.400/35.56	1.300/33.02
15	1.500/38.10	1.400/35.56
16	1.600/40.64	1.500/38.10
17	1.700/43.18	1.600/40.64
18	1.800/45.72	1.700/43.18
19	1.900/48.26	1.800/45.72
20	2.000/50.80	1.900/48.26
21	2.100/53.34	2.000/50.80
22	2.200/55.88	2.100/53.34
23	2.300/58.42	2.200/55.88
24	2.400/60.96	2.300/58.42
25	2.500/63.50	2.400/60.96
26	2.600/66.04	2.500/63.50
27	2.700/68.58	2.600/66.04
28	2.800/71.12	2.700/68.58
29	2.900/73.66	2.800/71.12
30	3.000/76.20	2.900/73.66
31	3.100/78.74	3.000/76.20
32	3.200/81.28	3.100/78.74
33	3.300/83.82	3.200/81.28
34	3.400/86.36	3.300/83.82
35	3.500/88.90	3.400/86.36
36	3.600/91.44	3.500/88.90



NOTE 9: CENTERLINE OF PIN IN AREA SHOWN NOT TO VARY FROM CENTERLINE OF PIN AT DATUM -D- BY MORE THAN .008/0.20 IN ANY DIRECTION.



- NOTES:
- MATERIAL: GLASS FILLED NYLON, 94V-0, COLOR: BLACK
 - FINISH:
 - (154) OVERALL TIN: .000100/0.00254 MIN. OVER .000050/0.00127 MIN NICKEL.
 - (208) SELECT GOLD: .000015/0.00038 MIN. OVERALL NICKEL UNDERPLATE: .000050/0.00127 MIN.
 - *SELECT TIN: .000100/0.00254 MIN.
 - (228) SELECT GOLD: .000030/0.00076 MIN. OVERALL NICKEL UNDERPLATE: .000050/0.00127 MIN.
 - *SELECT TIN: .000100/0.00254 MIN.
 - THE PRIMARY SHIPPING CARTON WILL BE LABELED "COMPLIANT TO ROHS DIRECTIVE 2002/95/EC AND ELV ANNEX II OF DIRECTIVE 2000/53/EC". CARTONS WITHOUT THIS LABEL MAY CONTAIN PRODUCT WITH TIN-LEAD PLATING
 - PRODUCT SPECIFICATION: PS-10-07.
 - PACKAGING INFORMATION: SEE TABLES
 - KINK PIN SPECIFICATION: SEE SMES-42003
 - HEADERS ARE NOT STACKABLE ON .100/2.54 CENTERS.
 - SOLDERABILITY PER SMES-152.
 - PIN PUSH OUT FORCE: 3 LBS. MIN.
 - ABRASION MARKS ON BACK WALL SURFACE ARE PERMISSIBLE.



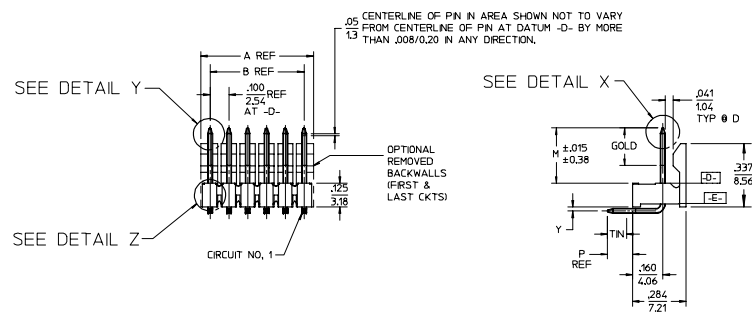
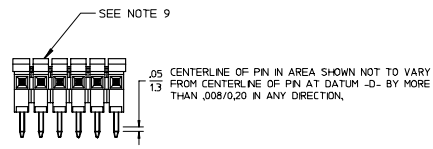
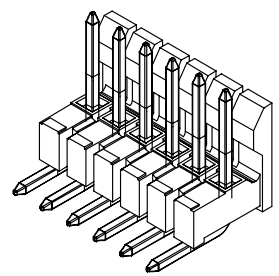
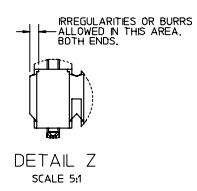
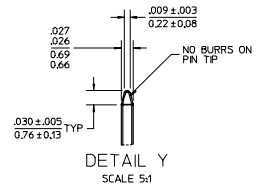
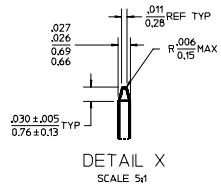
ADD NOTE 9 EC NO: LCP2006-1770 DRAWN BY: DRINABERR CHECKED BY: CHYCH SCHMIDT APPROVED BY: APPRFSM/TH 2004/02/01 2004/02/02 2006/02/06	QUALITY SYMBOLS	GENERAL TOLERANCES (UNLESS SPECIFIED)	DIMENSION STYLE	SCALE	DESIGN UNITS	THIRD ANGLE PROJECTION
	$\nabla=0$ $\nabla=0$	(UNLESS SPECIFIED) mm INCH 4 PLACES ± --- ± --- 3 PLACES ± --- ± .010 2 PLACES ± .25 ± .014 1 PLACE ± 0.36 ± --- ANGULAR ±1/2°	IN/MM DATE DRAWN BY: JSCHAFFER 2004/03/18 CHECKED BY: DATE KSAMIEC 2004/03/18 APPROVED BY: DATE MARGULIS 2004/03/18	2:1	INCH	TITLE .100 FRICTION LOCK BREAKAWAY HEADER ASSY
	DRAFT WHERE APPLICABLE MUST REMAIN WITHIN DIMENSIONS	MATERIAL NO.	DOCUMENT NO.	MOLEX INCORPORATED SEE CHART SD-42228-001		
	SIZE B	THIS DRAWING CONTAINS INFORMATION THAT IS PROPRIETARY TO MOLEX INCORPORATED AND SHOULD NOT BE USED WITHOUT WRITTEN PERMISSION			SHEET NO. 1 OF 4	

A-42228-0002/0036						A-42228-0037/0071									
HEADER NUMBER:		41411				HEADER NUMBER:		41411							
PIN NUMBER:		42663-CKA154				PIN NUMBER:		42663-CKB208							
PIN LENGTH: L		.705/17.91				PIN LENGTH: L		.705/17.91							
MATING LENGTH: M		.295/7.49				MATING LENGTH: M		.295/7.49							
GOLD POINT: G		N/A				GOLD POINT: G		.140/3.56							
PC TAIL LENGTH: P		.120/3.05				PC TAIL LENGTH: P		.120/3.05							
TIN: T		OVERALL				TIN: T		.135/3.43							
DIMENSION Y		.022/0.56				DIMENSION Y		.022/0.56							
CKTS:		2-36				CKTS:		2-36							
KINKS:		NO				KINKS:		NO							
REMOVED BACKWALLS:		NO				REMOVED BACKWALLS:		NO							
VOIDED CKTS:		NONE				VOIDED CKTS:		NONE							
PACKAGING:		BULK 40873-0056				PACKAGING:		BULK 40873-0056							
CKTS	MATERIAL NUMBER	ENG NUMBER	CKTS	MATERIAL NUMBER	ENG NUMBER	CKTS	MATERIAL NUMBER	ENG NUMBER	CKTS	MATERIAL NUMBER	ENG NUMBER				
02	22-28-1020	A-42228-0002	20	22-28-1200	A-42228-0020	02	22-28-1021	A-42228-0037	20	22-28-1201	A-42228-0055				
03	22-28-1030	A-42228-0003	21	22-28-1210	A-42228-0021	03	22-28-1031	A-42228-0038	21	22-28-1211	A-42228-0056				
04	22-28-1040	A-42228-0004	22	22-28-1220	A-42228-0022	04	22-28-1041	A-42228-0039	22	22-28-1221	A-42228-0057				
05	22-28-1050	A-42228-0005	23	22-28-1230	A-42228-0023	05	22-28-1051	A-42228-0040	23	22-28-1231	A-42228-0058				
06	22-28-1060	A-42228-0006	24	22-28-1240	A-42228-0024	06	22-28-1061	A-42228-0041	24	22-28-1241	A-42228-0059				
07	22-28-1070	A-42228-0007	25	22-28-1250	A-42228-0025	07	22-28-1071	A-42228-0042	25	22-28-1251	A-42228-0060				
08	22-28-1080	A-42228-0008	26	22-28-1260	A-42228-0026	08	22-28-1081	A-42228-0043	26	22-28-1261	A-42228-0061				
09	22-28-1090	A-42228-0009	27	22-28-1270	A-42228-0027	09	22-28-1091	A-42228-0044	27	22-28-1271	A-42228-0062				
10	22-28-1100	A-42228-0010	28	22-28-1280	A-42227-0028	10	22-28-1101	A-42228-0045	28	22-28-1281	A-42228-0063				
11	22-28-1110	A-42228-0011	29	22-28-1290	A-42228-0029	11	22-28-1111	A-42228-0046	29	22-28-1291	A-42228-0064				
12	22-28-1120	A-42228-0012	30	22-28-1300	A-42228-0030	12	22-28-1121	A-42228-0047	30	22-28-1301	A-42228-0065				
13	22-28-1130	A-42228-0013	31	22-28-1310	A-42228-0031	13	22-28-1131	A-42228-0048	31	22-28-1311	A-42228-0066				
14	22-28-1140	A-42228-0014	32	22-28-1320	A-42228-0032	14	22-28-1141	A-42228-0049	32	22-28-1321	A-42228-0067				
15	22-28-1150	A-42228-0015	33	22-28-1330	A-42228-0033	15	22-28-1151	A-42228-0050	33	22-28-1331	A-42228-0068				
16	22-28-1160	A-42228-0016	34	22-28-1340	A-42228-0034	16	22-28-1161	A-42228-0051	34	22-28-1341	A-42228-0069				
17	22-28-1170	A-42228-0017	35	22-28-1350	A-42228-0035	17	22-28-1171	A-42228-0052	35	22-28-1351	A-42228-0070				
18	22-28-1180	A-42228-0018	36	22-28-1360	A-42228-0036	18	22-28-1181	A-42228-0053	36	22-28-1361	A-42228-0071				
19	22-28-1190	A-42228-0019				19	22-28-1191	A-42228-0054							
REV:		L				TITLE:		.100 FRICTION LOCK BREAKAWAY HEADER ASSY.				SHEET No. - 2 -			
DOCUMENT NUMBER: SD- 42228 -001				CREATED / REVISED BY: S. LINEHAN 03/04/2004				CHECKED BY: K.SAMIEC 03/04/2004				APPROVED BY: Y. MARGULIS 03/04/2004			
<small>TEMPLATE FILENAME: PRODUCT_SPEC(SIZE_A)(V.1).DOC</small>															

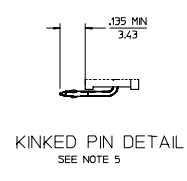
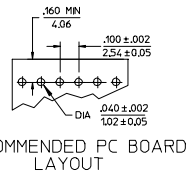
A-42228-0072/0106						A-42228-0107/0141									
HEADER NUMBER:		41411				HEADER NUMBER:		41411							
PIN NUMBER:		42663-CKB228				PIN NUMBER:		42663-CNA154							
PIN LENGTH: L		.705/17.91				PIN LENGTH: L		.720/18.29							
MATING LENGTH: M		.295/7.49				MATING LENGTH: M		.295/7.49							
GOLD POINT: G		.140/3.56				GOLD POINT: G		N/A							
PC TAIL LENGTH: P		.120/3.05				PC TAIL LENGTH: P		.135/3.43							
TIN: T		.135/3.43				TIN: T		OVERALL							
DIMENSION Y		.022/0.56				DIMENSION Y		.022/0.56							
CKTS:		2-36				CKTS:		2-36							
KINKS:		NO				KINKS:		YES ES-42003							
REMOVED BACKWALLS:		NO				REMOVED BACKWALLS:		NO							
VOIDED CKTS:		NONE				VOIDED CKTS:		NONE							
PACKAGING:		BULK 40873-0056				PACKAGING:		BULK 40873-0056							
CKTS	MATERIAL NUMBER	ENG NUMBER	CKTS	MATERIAL NUMBER	ENG NUMBER	CKTS	MATERIAL NUMBER	ENG NUMBER	CKTS	MATERIAL NUMBER	ENG NUMBER				
02	22-28-1022	A-42228-0072	20	22-28-1202	A-42228-0090	02	22-28-1023	A-42228-0107	20	22-28-1203	A-42228-0125				
03	22-28-1032	A-42228-0073	21	22-28-1212	A-42228-0091	03	22-28-1033	A-42228-0108	21	22-28-1213	A-42228-0126				
04	22-28-1042	A-42228-0074	22	22-28-1222	A-42228-0092	04	22-28-1043	A-42228-0109	22	22-28-1223	A-42228-0127				
05	22-28-1052	A-42228-0075	23	22-28-1232	A-42228-0093	05	22-28-1053	A-42228-0110	23	22-28-1233	A-42228-0128				
06	22-28-1062	A-42228-0076	24	22-28-1242	A-42228-0094	06	22-28-1063	A-42228-0111	24	22-28-1243	A-42228-0129				
07	22-28-1072	A-42228-0077	25	22-28-1252	A-42228-0095	07	22-28-1073	A-42228-0112	25	22-28-1253	A-42228-0130				
08	22-28-1082	A-42228-0078	26	22-28-1262	A-42228-0096	08	22-28-1083	A-42228-0113	26	22-28-1263	A-42228-0131				
09	22-28-1092	A-42228-0079	27	22-28-1272	A-42228-0097	09	22-28-1093	A-42228-0114	27	22-28-1273	A-42228-0132				
10	22-28-1102	A-42228-0080	28	22-28-1282	A-42228-0098	10	22-28-1103	A-42228-0115	28	22-28-1283	A-42228-0133				
11	22-28-1112	A-42228-0081	29	22-28-1292	A-42228-0099	11	22-28-1113	A-42228-0116	29	22-28-1293	A-42228-0134				
12	22-28-1122	A-42228-0082	30	22-28-1302	A-42228-0100	12	22-28-1123	A-42228-0117	30	22-28-1303	A-42228-0135				
13	22-28-1132	A-42228-0083	31	22-28-1312	A-42228-0101	13	22-28-1133	A-42228-0118	31	22-28-1313	A-42228-0136				
14	22-28-1142	A-42228-0084	32	22-28-1322	A-42228-0102	14	22-28-1143	A-42228-0119	32	22-28-1323	A-42228-0137				
15	22-28-1152	A-42228-0085	33	22-28-1332	A-42228-0103	15	22-28-1153	A-42228-0120	33	22-28-1333	A-42228-0138				
16	22-28-1162	A-42228-0086	34	22-28-1342	A-42228-0104	16	22-28-1163	A-42228-0121	34	22-28-1343	A-42228-0139				
17	22-28-1172	A-42228-0087	35	22-28-1352	A-42228-0105	17	22-28-1173	A-42228-0122	35	22-28-1353	A-42228-0140				
18	22-28-1182	A-42228-0088	36	22-28-1362	A-42228-0106	18	22-28-1183	A-42228-0123	36	22-28-1363	A-42228-0141				
19	22-28-1192	A-42228-0089				19	22-28-1193	A-42228-0124							
REV:		L				TITLE:		.100 FRICTION LOCK BREAKAWAY HEADER ASSY.				SHEET No. - 3 -			
DOCUMENT NUMBER: SD- 42228 -001				CREATED / REVISED BY: S. LINEHAN 03/04/2004				CHECKED BY: K.SAMIEC 03/04/2004				APPROVED BY: Y. MARGULIS 03/04/2004			
<small>TEMPLATE FILENAME: PRODUCT_SPEC(SIZE_A)(V.1).DOC</small>															

A-42228-0142/0176						A-42228-0177/0211									
HEADER NUMBER:		41411				HEADER NUMBER:		41411							
PIN NUMBER:		42663-CNB208				PIN NUMBER:		42663-CNB228							
PIN LENGTH: L		.720/18.29				PIN LENGTH: L		.720/18.29							
MATING LENGTH: M		.295/7.49				MATING LENGTH: M		.295/7.49							
GOLD POINT: G		.140/3.56				GOLD POINT: G		.140/3.56							
PC TAIL LENGTH: P		.135/3.43				PC TAIL LENGTH: P		.135/3.43							
TIN: T		.135/3.43				TIN: T		.135/3.43							
DIMENSION Y		.022/0.56				DIMENSION Y		.022/0.56							
CKTS:		2-36				CKTS:		2-36							
KINKS:		YES ES-42003				KINKS:		YES ES-42003							
REMOVED BACKWALLS:		NO				REMOVED BACKWALLS:		NO							
VOIDED CKTS:		NONE				VOIDED CKTS:		NONE							
PACKAGING:		BULK 40873-0056				PACKAGING:		BULK 40873-0056							
CKTS	MATERIAL NUMBER	ENG NUMBER	CKTS	MATERIAL NUMBER	ENG NUMBER	CKTS	MATERIAL NUMBER	ENG NUMBER	CKTS	MATERIAL NUMBER	ENG NUMBER				
02	22-28-1024	A-42228-0142	20	22-28-1204	A-42228-0160	02	22-28-1025	A-42228-0177	20	22-28-1205	A-42228-0195				
03	22-28-1034	A-42228-0143	21	22-28-1214	A-42228-0161	03	22-28-1035	A-42228-0178	21	22-28-1215	A-42228-0196				
04	22-28-1044	A-42228-0144	22	22-28-1224	A-42228-0162	04	22-28-1045	A-42228-0179	22	22-28-1225	A-42228-0197				
05	22-28-1054	A-42228-0145	23	22-28-1234	A-42228-0163	05	22-28-1055	A-42228-0180	23	22-28-1235	A-42228-0198				
06	22-28-1064	A-42228-0146	24	22-28-1244	A-42228-0164	06	22-28-1065	A-42228-0181	24	22-28-1245	A-42228-0199				
07	22-28-1074	A-42228-0147	25	22-28-1254	A-42228-0165	07	22-28-1075	A-42228-0182	25	22-28-1255	A-42228-0200				
08	22-28-1084	A-42228-0148	26	22-28-1264	A-42228-0166	08	22-28-1085	A-42228-0183	26	22-28-1265	A-42228-0201				
09	22-28-1094	A-42228-0149	27	22-28-1274	A-42228-0167	09	22-28-1095	A-42228-0184	27	22-28-1275	A-42228-0202				
10	22-28-1104	A-42228-0150	28	22-28-1284	A-42228-0168	10	22-28-1105	A-42228-0185	28	22-28-1285	A-42228-0203				
11	22-28-1114	A-42228-0151	29	22-28-1294	A-42228-0169	11	22-28-1115	A-42228-0186	29	22-28-1295	A-42228-0204				
12	22-28-1124	A-42228-0152	30	22-28-1304	A-42228-0170	12	22-28-1125	A-42228-0187	30	22-28-1305	A-42228-0205				
13	22-28-1134	A-42228-0153	31	22-28-1314	A-42228-0171	13	22-28-1135	A-42228-0188	31	22-28-1315	A-42228-0206				
14	22-28-1144	A-42228-0154	32	22-28-1324	A-42228-0172	14	22-28-1145	A-42228-0189	32	22-28-1325	A-42228-0207				
15	22-28-1154	A-42228-0155	33	22-28-1334	A-42228-0173	15	22-28-1155	A-42228-0190	33	22-28-1335	A-42228-0208				
16	22-28-1164	A-42228-0156	34	22-28-1344	A-42228-0174	16	22-28-1165	A-42228-0191	34	22-28-1345	A-42228-0209				
17	22-28-1174	A-42228-0157	35	22-28-1354	A-42228-0175	17	22-28-1175	A-42228-0192	35	22-28-1355	A-42228-0210				
18	22-28-1184	A-42228-0158	36	22-28-1364	A-42228-0176	18	22-28-1185	A-42228-0193	36	22-28-1365	A-42228-0211				
19	22-28-1194	A-42228-0159				19	22-28-1195	A-42228-0194							
REV:		L				TITLE:		.100 FRICTION LOCK BREAKAWAY HEADER ASSY.				SHEET No. - 4 -			
DOCUMENT NUMBER: SD- 42228 -001				CREATED / REVISED BY: S. LINEHAN 03/04/2004				CHECKED BY: K.SAMIEC 03/04/2004				APPROVED BY: Y. MARGULIS 03/04/2004			
<small>TEMPLATE FILENAME: PRODUCT_SPEC(SIZE_A)(V.1).DOC</small>															

CKTS	DM A	DM B
2	.200/5.08	.100/2.54
3	.300/7.62	.200/5.08
4	.400/10.16	.300/7.62
5	.500/12.70	.400/10.16
6	.600/15.24	.500/12.70
7	.700/17.78	.600/15.24
8	.800/20.32	.700/17.78
9	.900/22.86	.800/20.32
10	1.000/25.40	.900/22.86
11	1.100/27.94	1.000/25.40
12	1.200/30.48	1.100/27.94
13	1.300/33.02	1.200/30.48
14	1.400/35.56	1.300/33.02
15	1.500/38.10	1.400/35.56
16	1.600/40.64	1.500/38.10
17	1.700/43.18	1.600/40.64
18	1.800/45.72	1.700/43.18
19	1.900/48.26	1.800/45.72
20	2.000/50.80	1.900/48.26
21	2.100/53.34	2.000/50.80
22	2.200/55.88	2.100/53.34
23	2.300/58.42	2.200/55.88
24	2.400/60.96	2.300/58.42
25	2.500/63.50	2.400/60.96
26	2.600/66.04	2.500/63.50
27	2.700/68.58	2.600/66.04
28	2.800/71.12	2.700/68.58
29	2.900/73.66	2.800/71.12
30	3.000/76.20	2.900/73.66
31	3.100/78.74	3.000/76.20
32	3.200/81.28	3.100/78.74
33	3.300/83.82	3.200/81.28
34	3.400/86.36	3.300/83.82
35	3.500/88.90	3.400/86.36
36	3.600/91.44	3.500/88.90



- NOTES:
- MATERIAL: GLASS FILLED NYLON, 94V-0, COLOR: BLACK
 - FINISH:
 - (E4) *OVERALL TIN: .000100/0.00254 MM. OVER .000050/0.00127 MM NICKEL.
 - (Z08) SELECT GOLD: .000015/0.00038 MM. *SELECT TIN: .000100/0.00254 MM. OVERALL NICKEL UNDERPLATE: .000050/0.00127 MM.
 - (Z28) SELECT GOLD: .000030/0.00076 MM. *SELECT TIN: .000100/0.00254 MM. OVERALL NICKEL UNDERPLATE: .000050/0.00127 MM.
 - *THE PRIMARY SHIPPING CARTON WILL BE LABELED "COMPLIANT TO RoHS DIRECTIVE 2002/95/EC AND ELV ANNEX II OF DIRECTIVE 2000/53/EC". CARTONS WITHOUT THIS LABEL MAY CONTAIN PRODUCT WITH TIN-LEAD PLATING
 - PRODUCT SPECIFICATION: PS-01-07.
 - PACKAGING INFORMATION: SEE TABLES
 - KNK PIN SPECIFICATION: SEE SMES-42003
 - HEADERS ARE NOT STACKABLE ON .100/2.54 CENTERS.
 - SOLDERABILITY PER SMES-152.
 - PIN PUSH OUT FORCE: 3 LBS. MN.
 - ABRASION MARKS ON BACK WALL SURFACE ARE PERMISSIBLE.



REV	DESCRIPTION	QUALITY SYMBOLS	GENERAL TOLERANCES (UNLESS SPECIFIED)		DIMENSION STYLE		SCALE	DESIGN UNITS	THIRD ANGLE PROJECTION
			mm	INCH	IN/MM	DATE			
ADD NOTE 9	EC NO: UCP2006-1710	▽=0	4 PLACES	± ---	INCH	DATE	2:1	INCH	.100 FRICTION LOCK BREAKAWAY HEADER ASSY
DRN:ABERR	2004/02/01	▽=0	3 PLACES	± ---	INCH	DATE			
CHK:CSHMDT	2004/02/02		2 PLACES	± 0.25	± 0.14	DATE			
APPR:SMITH	2004/02/06		1 PLACE	± 0.36	± ---	DATE			
			ANGULAR ±1/2°			DATE			
			DRAFT WHERE APPLICABLE MUST REMAIN WITHIN DIMENSIONS			DATE			
			MATERIAL NO.			DATE			
			SEE CHART			DATE			
			DOCUMENT NO.			DATE			
			SD-42228-002			DATE			
			SHEET NO.			DATE			
			1 OF 6			DATE			

A-42228-0077						A-42228-0144					
HEADER NUMBER:			41411			HEADER NUMBER:			41411		
PIN NUMBER:			42663-CKB228			PIN NUMBER:			42663-CNB208		
PIN LENGTH: L			.705/17.91			PIN LENGTH: L			.720/18.29		
MATING LENGTH: M			.295/7.49			MATING LENGTH: M			.295/7.49		
GOLD POINT: G			.140/3.56			GOLD POINT: G			.140/3.56		
PC TAIL LENGTH: P			.120/3.05			PC TAIL LENGTH: P			.135/3.43		
TIN: T			.135/3.43			TIN: T			.135/3.43		
DIMENSION Y			.022/0.56			DIMENSION Y			.022/0.56		
CKTS:			2-36			CKTS:			2-36		
KINKS:			NO			KINKS:			YES ES-42003		
REMOVED BACKWALLS:			NO			REMOVED BACKWALLS:			NO		
VOIDED CKTS:			NONE			VOIDED CKTS:			NONE		
PACKAGING:			BULK 40873-0056			PACKAGING:			BULK 40873-0056		
CKTS	MATERIAL NUMBER	ENG NUMBER	CKTS	MATERIAL NUMBER	ENG NUMBER	CKTS	MATERIAL NUMBER	ENG NUMBER	CKTS	MATERIAL NUMBER	ENG NUMBER
02			20			02			20		
03			21			03			21		
04			22			04	50-29-1739	A-42228-0144	22		
05			23			05			23		
06			24			06			24		
07	50-29-1881	A-42228-0077	25			07			25		
08			26			08			26		
09			27			09			27		
10			28			10			28		
11			29			11			29		
12			30			12			30		
13			31			13			31		
14			32			14			32		
15			33			15			33		
16			34			16			34		
17			35			17			35		
18			36			18			36		
19						19					

REV:		TITLE:	SHEET No.
A2		.100 FRICTION LOCK BREAKAWAY HEADER ASSY. LEAD-FREE	- 2 -
DOCUMENT NUMBER:	CREATED / REVISED BY:	CHECKED BY:	APPROVED BY:
SD- 42228 -003	DPETERSON 09/26/2005	ADERR 09/26/2005	FSMITH 09/26/2005

TEMPLATE FILENAME: PRODUCT_SPEC(SIZE_A)(V.1).DOC