

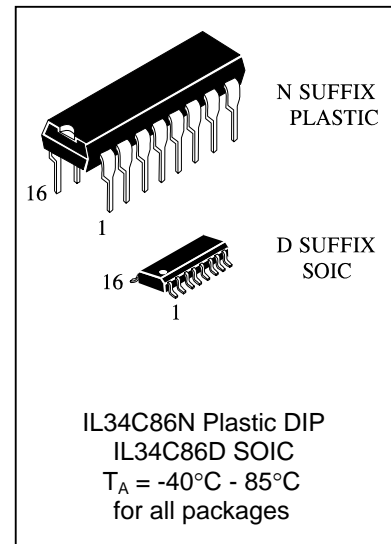
Differential line receiver

IL34C86

Microcircuit IL34C86 consists of four differential line receivers and is a microcircuit that meets international standards of data transmission RS-422, RS-423, and it is widely used in data transmission nets, particularly in a unit for local loop of ATS.

Functions implemented

This device carries out comparing inputs with low differential signal of 200mV and gives on output full signal with load carrying capacity of $\pm 6\text{mA}$, and also has hysteresis to improve noise margin.



Truth table

Enable	input	output
L	X	Z
H	$V_{ID} \geq V_{TH} (\text{max})$	H
H	$V_{ID} \leq V_{TH} (\text{max})$	L
H	Open*	H

V_{ID} – difference of inputs A2-A1, or B2-B1, or C2-C1, or D2-D1.

V_{TH} – minimum differential input voltage.

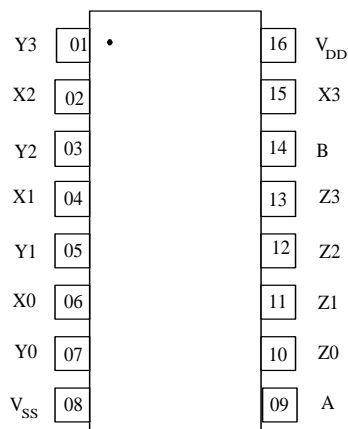
Open* – no signals delivered to inputs.

Pin Definitions and Functions

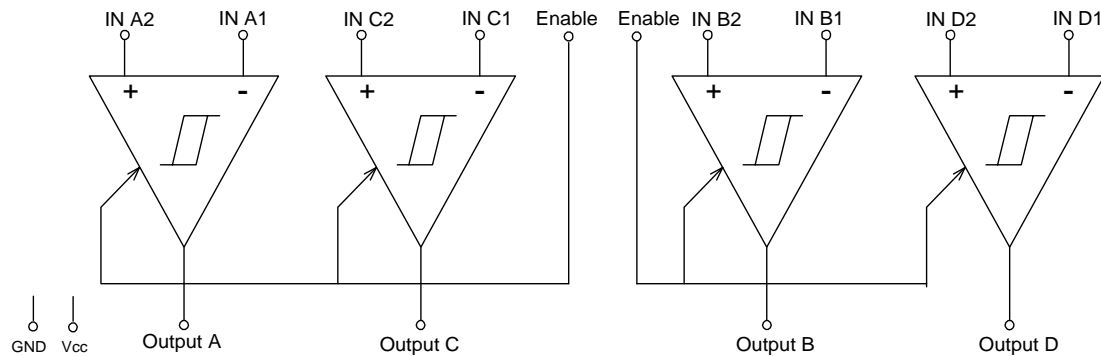
Pin	Symbol	Functions
01	A1	Input of receiver A
02	A2	Input of receiver A
03	A	Output of receiver A
04	En A/C	input of switching outputs of A and C receivers into the third state
05	C	Output of receiver C
06	C2	2 Input of receiver C
07	C1	1 Input of receiver C
08	GND	General pin
09	D1	1 Input of receiver D.
10	D2	2 Input of receiver D.
11	D	Output of receiver D.
12	En B/D	input of switching outputs of B and D receivers into the third state
13	B	Output of receiver B.
14	B2	2 Input of receiver C
15	B1	1 Input of receiver C
16	V _{DD}	Pin of power supply from source of voltage

L – Low voltage level
 H – High voltage level
 X – any level of voltage
 Z – the third state of output .

Pin Configuration



Block Diagram



Limiting and extreme parameters

Table 1

Parameter	Symbol	Limiting mode		Extreme mode		Unit
		min	max	min	max	
Supply voltage	V _{DD}	4.50	5.50	—	7	V
Input voltage	V _{CM}	—	—	-14	14	
differential input voltage	V _{DIFF}	—	—	-14	14	
Voltage on input Enable	V _{IN}	—	—	—	7	
Output current	—	—	—	-25	+25	mA
transition time when switching in, switching off on input Enable	t _r , t _f	—	500	—	—	ns
Dissipated power	DIP	—	—	—	1645*	mW
	SO	—	—	—	1190*	
Operation temperature	T _A	-40	+85	—	—	°C
Storage temperature	T _{STG}	—	—	-65	+150	
Temperature of soldering, 4s	T _L	—	—	—	260	

* - at increasing temperature higher than 25°C P_D decreased on 13.89mW/°C for DIP package and on 9.80mW/°C for SO package.

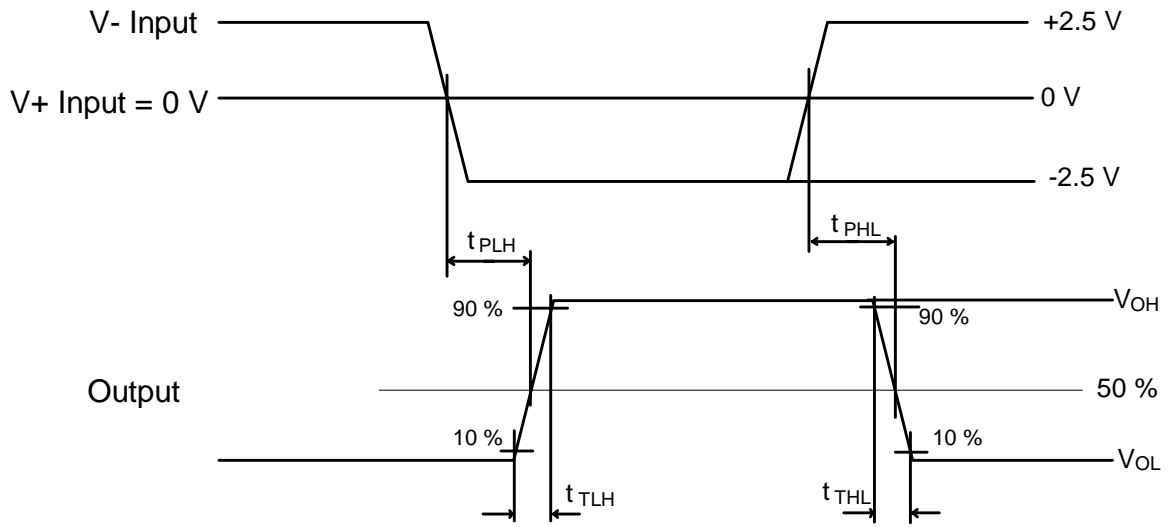
Electrical Characteristics

Table 2

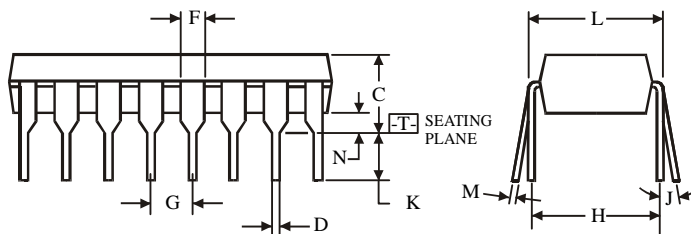
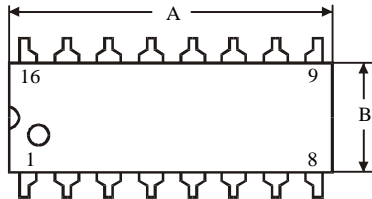
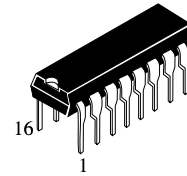
T = -40⁰ ÷ +85⁰C

Parameter	Symbol	Test Conditions	Values		Unit
			min	max.	
Minimum differential input voltage	V _{TH}	-7V < V _{Cm} < +7V	-200	200	mV
input resistance	R _{IN}	V _{IN} = -7V, +7V (the rest inputs on "ground")	5.0	10	kOhm
input current	I _{IN}	V _{IN} = -10V (the rest inputs on "ground") V _{IN} = +10V (the rest inputs on "ground")	—	+1.5	mA
			—	-2.5	
minimum output voltage of high level	V _{OH}	V _{DD} = 4.5V, V _{DIFF} = +1V, I _{OUT} = -6.0mA	3.8	—	V
maximum output voltage of low level	V _{OL}	V _{DD} = 5.5V, V _{DIFF} = -1V, I _{OUT} = +6.0mA	—	0.3	
minimum input voltage of high level on input Enable	V _{IH}	—	2.0	—	V
maximum input voltage of low level on input Enable	V _{IL}	—	—	0.8	
maximum output current of the third state	I _{OZ}	V _{OUT} = V _{DD} or 0V	—	±0.5	μA
maximum input current on input Enable	I _I	V _{IN} = V _{DD} or 0V	—	±1.0	μA
consumption current	I _{CC}	V _{DD} = 5.5V, V _{DIFF} = +1V	—	23	mA
time of propagation delay at switching off, switching on	t _{PLH} , t _{PHL}	C _L = 50pF, V _{DIFF} = 2.5V, V _{Cm} = 0V	—	30	ns
Transition time when switching in, switching off	t _{RISE} , t _{FALL}	C _L = 50pF, V _{DIFF} = 2.5V, V _{Cm} = 0V	—	9	
time of the third state propagation delay on input Enable	t _{PLZ} , t _{PHZ}	C _L = 50pF, V _{DIFF} = 2.5V, R _L = 1000kOhm	—	18	
time of the third state propagation delay on input Enable	t _{PZL} , t _{PZH}	C _L = 50pF, V _{DIFF} = 2.5V, R _L = 1000kOhm	—	21	

**Time diagram
of signals at changing dynamic parameters**
 t_{PLH} , t_{PHL} , t_{TLH} , t_{THL} , t_{PZH} , t_{PHZ} , t_{PZL} , t_{PLZ}



**N SUFFIX PLASTIC DIP
(MS - 001BB)**



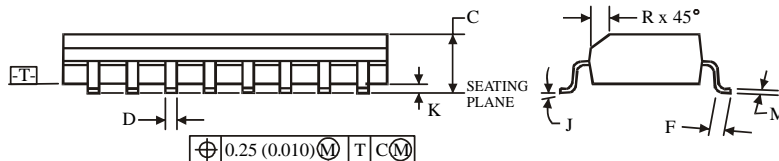
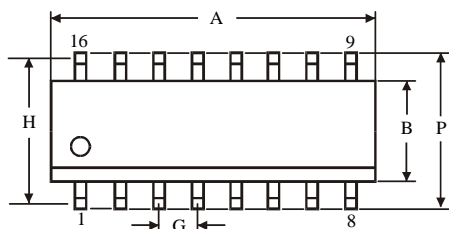
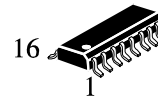
$\oplus 0.25 (0.010) \text{ (M) T}$

NOTES:

- Dimensions "A", "B" do not include mold flash or protrusions.
Maximum mold flash or protrusions 0.25 mm (0.010) per side.

Symbol	Dimension, mm	
	MIN	MAX
A	18.67	19.69
B	6.1	7.11
C		5.33
D	0.36	0.56
F	1.14	1.78
G	2.54	
H	7.62	
J	0°	10°
K	2.92	3.81
L	7.62	8.26
M	0.2	0.36
N	0.38	

**D SUFFIX SOIC
(MS - 012AC)**



$\oplus 0.25 (0.010) \text{ (M) T (C) (M)}$

NOTES:

- Dimensions A and B do not include mold flash or protrusion.
- Maximum mold flash or protrusion 0.15 mm (0.006) per side for A; for B - 0.25 mm (0.010) per side.

Symbol	Dimension, mm	
	MIN	MAX
A	9.8	10
B	3.8	4
C	1.35	1.75
D	0.33	0.51
F	0.4	1.27
G	1.27	
H	5.72	
J	0°	8°
K	0.1	0.25
M	0.19	0.25
P	5.8	6.2
R	0.25	0.5