

PLEASE CHECK WWW.MOLEX.COM FOR LATEST PART INFORMATION

Part Number: [0022282130](#)
Status: **Active**
Description: 2.54mm (.100") Pitch KK@ Header, Breakaway, Right Angle, with Plastic Polarizing Peg, 13 Circuits, Tin (Sn) Plating

Documents:

| | |
|---|--|
| 3D Model | Product Specification PS-10-07 (PDF) |
| Drawing (PDF) | RoHS Certificate of Compliance (PDF) |
| Packaging Specification (PDF) | |

Agency Certification

| | |
|-----|---------|
| CSA | LR19980 |
| UL | E29179 |

General

| | |
|----------------|---------------|
| Product Family | PCB Headers |
| Series | 42226 |
| Application | Wire-to-Board |
| Product Name | KK@ |

Physical

| | |
|--------------------------------|--------------|
| Breakaway | Yes |
| Circuits (Loaded) | 13 |
| Circuits (maximum) | 13 |
| Color - Resin | Black |
| Durability (mating cycles max) | 25 |
| Flammability | 94V-0 |
| Glow-Wire Compliant | No |
| Lock to Mating Part | None |
| Material - Metal | Brass |
| Material - Plating Mating | Tin |
| Material - Plating Termination | Tin |
| Material - Resin | Nylon |
| Number of Rows | 1 |
| Orientation | Right Angle |
| PC Tail Length (in) | 0.120 In |
| PC Tail Length (mm) | 3.05 mm |
| PCB Locator | No |
| PCB Retention | None |
| PCB Thickness Recommended (in) | 0.062 In |
| PCB Thickness Recommended (mm) | 1.60 mm |
| Packaging Type | Bag |
| Pitch - Mating Interface (in) | 0.100 In |
| Pitch - Mating Interface (mm) | 2.54 mm |
| Plating min: Mating (µin) | 100 |
| Plating min: Mating (µm) | 2.5 |
| Plating min: Termination (µin) | 100 |
| Plating min: Termination (µm) | 2.5 |
| Polarized to Mating Part | No |
| Polarized to PCB | No |
| Shrouded | No |
| Stackable | No |
| Temperature Range - Operating | 0°C to +75°C |
| Termination Interface: Style | Through Hole |

Electrical

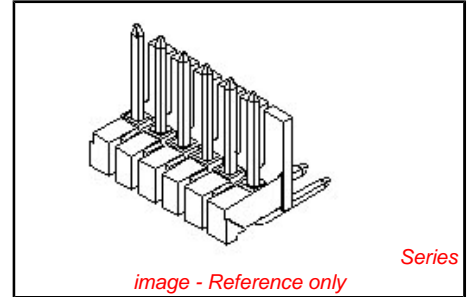


image - Reference only

| | |
|---|-----------------------|
| EU RoHS ELV and RoHS Compliant REACH SVHC Contains SVHC: No Halogen-Free Status Not Reviewed | China RoHS |
|---|-----------------------|

Need more information on product environmental compliance?

Email productcompliance@molex.com
 For a multiple part number RoHS Certificate of Compliance, [click here](#)

Please visit the [Contact Us](#) section for any non-product compliance questions.

Search Parts in this Series
42226Series

Mates With
2695 , 6471 , 7880 , 4455 , 7720

Current - Maximum per Contact 4A
Voltage - Maximum 250V

Solder Process Data

Duration at Max. Process Temperature (seconds) 5
Lead-free Process Capability Wave Capable (TH only)
Max. Cycles at Max. Process Temperature 1
Process Temperature max. C 235

Material Info

Old Part Number 42226-0013

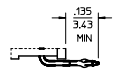
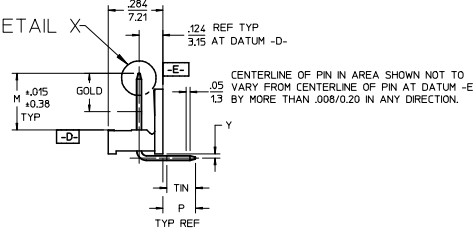
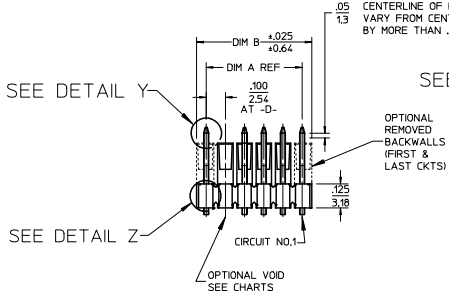
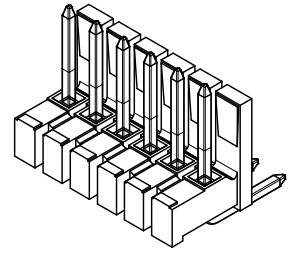
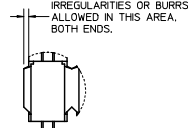
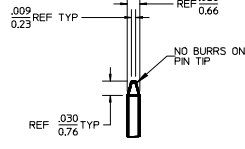
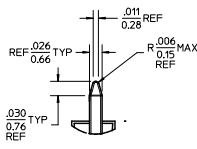
Reference - Drawing Numbers

Product Specification PS-10-07
Sales Drawing SD-42226-001

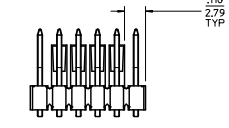
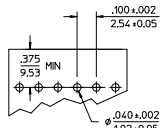
This document was generated on 04/19/2010

PLEASE CHECK WWW.MOLEX.COM FOR LATEST PART INFORMATION

| CKTS | DIM A | DIM B |
|------|-------------|-------------|
| 2 | .100/2.54 | .200/5.08 |
| 3 | .200/5.08 | .300/7.62 |
| 4 | .300/7.62 | .400/10.16 |
| 5 | .400/10.16 | .500/12.70 |
| 6 | .500/12.70 | .600/15.24 |
| 7 | .600/15.24 | .700/17.78 |
| 8 | .700/17.78 | .800/20.32 |
| 9 | .800/20.32 | .900/22.86 |
| 10 | .900/22.86 | 1.000/25.40 |
| 11 | 1.000/25.40 | 1.100/27.94 |
| 12 | 1.100/27.94 | 1.200/30.48 |
| 13 | 1.200/30.48 | 1.300/33.02 |
| 14 | 1.300/33.02 | 1.400/35.56 |
| 15 | 1.400/35.56 | 1.500/38.10 |
| 16 | 1.500/38.10 | 1.600/40.64 |
| 17 | 1.600/40.64 | 1.700/43.18 |
| 18 | 1.700/43.18 | 1.800/45.72 |
| 19 | 1.800/45.72 | 1.900/48.26 |
| 20 | 1.900/48.26 | 2.000/50.80 |
| 21 | 2.000/50.80 | 2.100/53.34 |
| 22 | 2.100/53.34 | 2.200/55.88 |
| 23 | 2.200/55.88 | 2.300/58.42 |
| 24 | 2.300/58.42 | 2.400/60.96 |
| 25 | 2.400/60.96 | 2.500/63.50 |
| 26 | 2.500/63.50 | 2.600/66.04 |
| 27 | 2.600/66.04 | 2.700/68.58 |
| 28 | 2.700/68.58 | 2.800/71.12 |
| 29 | 2.800/71.12 | 2.900/73.66 |
| 30 | 2.900/73.66 | 3.000/76.20 |
| 31 | 3.000/76.20 | 3.100/78.74 |
| 32 | 3.100/78.74 | 3.200/81.28 |
| 33 | 3.200/81.28 | 3.300/83.82 |
| 34 | 3.300/83.82 | 3.400/86.36 |
| 35 | 3.400/86.36 | 3.500/88.90 |
| 36 | 3.500/88.90 | 3.600/91.44 |



- NOTES:
- MATERIAL: GLASS FILLED NYLON, 94V-0. COLOR: BLACK
 - FINISH:
 - (154) *OVERALL TIN: .000100/0.00254 MIN. OVER .000050/0.00127 MIN NICKEL.
 - (208) SELECT GOLD: .000015/0.00038 MIN. *SELECT TIN: .000100/0.00254 MIN. OVERALL NICKEL UNDERPLATE: .000050/0.00127 MIN.
 - (228) SELECT GOLD: .000030/0.00076 MIN. *SELECT TIN: .000100/0.00254 MIN. OVERALL NICKEL UNDERPLATE: .000050/0.00127 MIN.
 - *THE PRIMARY SHIPPING CARTON WILL BE LABELED "COMPLIANT TO ROHS DIRECTIVE 2002/95/EC AND ELV ANNEX II OF DIRECTIVE 2000/53/EC". CARTONS WITHOUT THIS LABEL MAY CONTAIN PRODUCT WITH TIN-LEAD PLATING
 - PRODUCT SPECIFICATION: PS-10-07.
 - PACKAGING INFORMATION: SEE TABLES
 - KINK PIN SPECIFICATION: SEE SMES-42003
 - HEADERS ARE NOT STACKABLE ON .100/2.54 CENTERS.
 - SOLDERABILITY PER SMES-152.
 - PIN PUSH OUT FORCE: 3 LBS. MIN.
 - PARTS CONFORM TO CLASS 'B' REQUIREMENTS OF COSMETIC SPECIFICATION PS-45499-002.
 - PIN TIP DIMENSIONS ARE SHOWN FOR REFERENCE ONLY. DIMENSIONS APPLY PRIOR TO PLATING OR ASSEMBLY.



| | | | | | | |
|---|-----------------|---------------------------------------|-----------------------|-----------------|---|------------------------|
| CORRECT PIN TIPS EC NO: UCP2009-2519 DRAWN: TRENNES 2009/04/20 CHKD: KUPFER 2009/04/23 APPR: F SMITH 2009/04/23 | QUALITY SYMBOLS | GENERAL TOLERANCES (UNLESS SPECIFIED) | DIMENSION STYLE IN/MM | SCALE 2:1 | DESIGN UNITS INCH | THIRD ANGLE PROJECTION |
| | ▽=0 | 4 PLACES ± --- ± --- | DRAWN BY JSCHAFFER | DATE 2003/09/23 | TITLE .100 POLARIZING BREAKAWAY HEADER ASSY | |
| | ▽=0 | 3 PLACES ± --- ± .010 | CHECKED BY KSAMIEC | DATE 2003/09/23 | MOLEX INCORPORATED | |
| | | 2 PLACES ± .025 ± .014 | APPROVED BY MARGULIS | DATE 2003/09/23 | DOCUMENT NO. SD-42226-001 | SHEET NO. 1 OF 7 |

| | | | |
|----------------------|---------------|--|-----------|
| 1 PLACE ± 0.36 ± --- | ANGULAR ±1/2° | DRAFT WHERE APPLICABLE MUST REMAIN WITHIN DIMENSIONS | SEE CHART |
|----------------------|---------------|--|-----------|

| | | | |
|--------------|--------|---|--|
| MATERIAL NO. | SIZE B | THIS DRAWING CONTAINS INFORMATION THAT IS PROPRIETARY TO MOLEX INCORPORATED AND SHOULD NOT BE USED WITHOUT WRITTEN PERMISSION | |
|--------------|--------|---|--|

| A-42226-0002/0036 | | | | | | A-42226-0037/0071 | | | | | | | | |
|---|-----------------|-----------------|------------------------------|-----------------|--------------|----------------------------|-----------------|---|-------------------------------|-----------------|--------------|--------------|--|--|
| HEADER NUMBER: | | 41410 | | | | HEADER NUMBER: | | 41410 | | | | | | |
| PIN NUMBER: | | 42663-CCA154 | | | | PIN NUMBER: | | 42663-CCB208 | | | | | | |
| PIN LENGTH: L | | .670/17.02 | | | | PIN LENGTH: L | | .670/17.02 | | | | | | |
| MATING LENGTH: M | | .295/7.49 | | | | MATING LENGTH: M | | .295/7.49 | | | | | | |
| GOLD POINT: G | | N/A | | | | GOLD POINT: G | | .140/3.56 | | | | | | |
| PC TAIL LENGTH: P | | .120/3.05 | | | | PC TAIL LENGTH: P | | .120/3.05 | | | | | | |
| TIN: T | | OVERALL | | | | TIN: T | | .135/3.43 | | | | | | |
| DIMENSION Y | | .022/0.56 | | | | DIMENSION Y | | .022/0.56 | | | | | | |
| CKTS: | | 2-36 | | | | CKTS: | | 2-36 | | | | | | |
| KINKS: | | NO | | | | KINKS: | | NO | | | | | | |
| REMOVED BACKWALLS: | | NO | | | | REMOVED BACKWALLS: | | NO | | | | | | |
| VOIDED CKTS: | | NONE | | | | VOIDED CKTS: | | NONE | | | | | | |
| PACKAGING: | | BULK 40873-0056 | | | | PACKAGING: | | BULK 40873-0056 | | | | | | |
| CKTS | MATERIAL NUMBER | ENG NUMBER | CKTS | MATERIAL NUMBER | ENG NUMBER | CKTS | MATERIAL NUMBER | ENG NUMBER | CKTS | MATERIAL NUMBER | ENG NUMBER | | | |
| 02 | 22-28-2020 | A-42226-0002 | 20 | 22-28-2200 | A-42226-0020 | 02 | 22-28-2022 | A-42226-0037 | 20 | 22-28-2202 | A-42226-0055 | | | |
| 03 | 22-28-2030 | A-42226-0003 | 21 | 22-28-2210 | A-42226-0021 | 03 | 22-28-2032 | A-42226-0038 | 21 | 22-28-2212 | A-42226-0056 | | | |
| 04 | 22-28-2040 | A-42226-0004 | 22 | 22-28-2220 | A-42226-0022 | 04 | 22-28-2042 | A-42226-0039 | 22 | 22-28-2222 | A-42226-0057 | | | |
| 05 | 22-28-2050 | A-42226-0005 | 23 | 22-28-2230 | A-42226-0023 | 05 | 22-28-2052 | A-42226-0040 | 23 | 22-28-2232 | A-42226-0058 | | | |
| 06 | 22-28-2060 | A-42226-0006 | 24 | 22-28-2240 | A-42226-0024 | 06 | 22-28-2062 | A-42226-0041 | 24 | 22-28-2242 | A-42226-0059 | | | |
| 07 | 22-28-2070 | A-42226-0007 | 25 | 22-28-2250 | A-42226-0025 | 07 | 22-28-2072 | A-42226-0042 | 25 | 22-28-2252 | A-42226-0060 | | | |
| 08 | 22-28-2080 | A-42226-0008 | 26 | 22-28-2260 | A-42226-0026 | 08 | 22-28-2082 | A-42226-0043 | 26 | 22-28-2262 | A-42226-0061 | | | |
| 09 | 22-28-2090 | A-42226-0009 | 27 | 22-28-2270 | A-42226-0027 | 09 | 22-28-2092 | A-42226-0044 | 27 | 22-28-2272 | A-42226-0062 | | | |
| 10 | 22-28-2100 | A-42226-0010 | 28 | 22-28-2280 | A-42226-0028 | 10 | 22-28-2102 | A-42226-0045 | 28 | 22-28-2282 | A-42226-0063 | | | |
| 11 | 22-28-2110 | A-42226-0011 | 29 | 22-28-2290 | A-42226-0029 | 11 | 22-28-2112 | A-42226-0046 | 29 | 22-28-2292 | A-42226-0064 | | | |
| 12 | 22-28-2120 | A-42226-0012 | 30 | 22-28-2300 | A-42226-0030 | 12 | 22-28-2122 | A-42226-0047 | 30 | 22-28-2302 | A-42226-0065 | | | |
| 13 | 22-28-2130 | A-42226-0013 | 31 | 22-28-2310 | A-42226-0031 | 13 | 22-28-2132 | A-42226-0048 | 31 | 22-28-2312 | A-42226-0066 | | | |
| 14 | 22-28-2140 | A-42226-0014 | 32 | 22-28-2320 | A-42226-0032 | 14 | 22-28-2142 | A-42226-0049 | 32 | 22-28-2322 | A-42226-0067 | | | |
| 15 | 22-28-2150 | A-42226-0015 | 33 | 22-28-2330 | A-42226-0033 | 15 | 22-28-2152 | A-42226-0050 | 33 | 22-28-2332 | A-42226-0068 | | | |
| 16 | 22-28-2160 | A-42226-0016 | 34 | 22-28-2340 | A-42226-0034 | 16 | 22-28-2162 | A-42226-0051 | 34 | 22-28-2342 | A-42226-0069 | | | |
| 17 | 22-28-2170 | A-42226-0017 | 35 | 22-28-2350 | A-42226-0035 | 17 | 22-28-2172 | A-42226-0052 | 35 | 22-28-2352 | A-42226-0070 | | | |
| 18 | 22-28-2180 | A-42226-0018 | 36 | 22-28-2360 | A-42226-0036 | 18 | 22-28-2182 | A-42226-0053 | 36 | 22-28-2362 | A-42226-0071 | | | |
| 19 | 22-28-2190 | A-42226-0019 | | | | 19 | 22-28-2192 | A-42226-0054 | | | | | | |
| REV: | | J | | | | TITLE: | | .100 POLARIZING BREAKAWAY HEADER ASSY. | | | | SHEET No. | | |
| | | | | | | | | | | | | - 2 - | | |
| DOCUMENT NUMBER: | | | CREATED / REVISED BY: | | | CHECKED BY: | | | APPROVED BY: | | | | | |
| SD- 42226 -001 | | | S. LINEHAN 03/04/2004 | | | K.SAMIEC 03/04/2003 | | | Y. MARGULIS 03/04/2004 | | | | | |
| <small>TEMPLATE FILENAME: PRODUCT_SPEC(SIZE_A)(V.1).DOC</small> | | | | | | | | | | | | | | |

| A-42226-0072/0106 | | | | | | A-42226-0107/0141 | | | | | | | | |
|---|-----------------|-----------------|------------------------------|-----------------|--------------|----------------------------|-----------------|---|-------------------------------|-----------------|--------------|--------------|--|--|
| HEADER NUMBER: | | 41410 | | | | HEADER NUMBER: | | 41410 | | | | | | |
| PIN NUMBER: | | 42663-CCB228 | | | | PIN NUMBER: | | 42663-CFA154 | | | | | | |
| PIN LENGTH: L | | .670/17.02 | | | | PIN LENGTH: L | | .685/17.40 | | | | | | |
| MATING LENGTH: M | | .295/7.49 | | | | MATING LENGTH: M | | .295/7.49 | | | | | | |
| GOLD POINT: G | | .140/3.56 | | | | GOLD POINT: G | | N/A | | | | | | |
| PC TAIL LENGTH: P | | .120/3.05 | | | | PC TAIL LENGTH: P | | .135/3.43 | | | | | | |
| TIN: T | | .135/3.43 | | | | TIN: T | | OVERALL | | | | | | |
| DIMENSION Y | | .022/0.56 | | | | DIMENSION Y | | .022/0.56 | | | | | | |
| CKTS: | | 2-36 | | | | CKTS: | | 2-36 | | | | | | |
| KINKS: | | NO | | | | KINKS: | | YES | | | | | | |
| REMOVED BACKWALLS: | | NO | | | | REMOVED BACKWALLS: | | NO | | | | | | |
| VOIDED CKTS: | | NONE | | | | VOIDED CKTS: | | NONE | | | | | | |
| PACKAGING: | | BULK 40873-0056 | | | | PACKAGING: | | BULK 40873-0056 | | | | | | |
| CKTS | MATERIAL NUMBER | ENG NUMBER | CKTS | MATERIAL NUMBER | ENG NUMBER | CKTS | MATERIAL NUMBER | ENG NUMBER | CKTS | MATERIAL NUMBER | ENG NUMBER | | | |
| 02 | 22-28-2023 | A-42226-0072 | 20 | 22-28-2203 | A-42226-0090 | 02 | 22-28-2024 | A-42226-0107 | 20 | 22-28-2204 | A-42226-0125 | | | |
| 03 | 22-28-2033 | A-42226-0073 | 21 | 22-28-2213 | A-42226-0091 | 03 | 22-28-2034 | A-42226-0108 | 21 | 22-28-2214 | A-42226-0126 | | | |
| 04 | 22-28-2043 | A-42226-0074 | 22 | 22-28-2223 | A-42226-0092 | 04 | 22-28-2044 | A-42226-0109 | 22 | 22-28-2224 | A-42226-0127 | | | |
| 05 | 22-28-2053 | A-42226-0075 | 23 | 22-28-2233 | A-42226-0093 | 05 | 22-28-2054 | A-42226-0110 | 23 | 22-28-2234 | A-42226-0128 | | | |
| 06 | 22-28-2063 | A-42226-0076 | 24 | 22-28-2243 | A-42226-0094 | 06 | 22-28-2064 | A-42226-0111 | 24 | 22-28-2244 | A-42226-0129 | | | |
| 07 | 22-28-2073 | A-42226-0077 | 25 | 22-28-2253 | A-42226-0095 | 07 | 22-28-2074 | A-42226-0112 | 25 | 22-28-2254 | A-42226-0130 | | | |
| 08 | 22-28-2083 | A-42226-0078 | 26 | 22-28-2263 | A-42226-0096 | 08 | 22-28-2084 | A-42226-0113 | 26 | 22-28-2264 | A-42226-0131 | | | |
| 09 | 22-28-2093 | A-42226-0079 | 27 | 22-28-2273 | A-42226-0097 | 09 | 22-28-2094 | A-42226-0114 | 27 | 22-28-2274 | A-42226-0132 | | | |
| 10 | 22-28-2103 | A-42226-0080 | 28 | 22-28-2283 | A-42226-0098 | 10 | 22-28-2104 | A-42226-0115 | 28 | 22-28-2284 | A-42226-0133 | | | |
| 11 | 22-28-2113 | A-42226-0081 | 29 | 22-28-2293 | A-42226-0099 | 11 | 22-28-2114 | A-42226-0116 | 29 | 22-28-2294 | A-42226-0134 | | | |
| 12 | 22-28-2123 | A-42226-0082 | 30 | 22-28-2303 | A-42226-0100 | 12 | 22-28-2124 | A-42226-0117 | 30 | 22-28-2304 | A-42226-0135 | | | |
| 13 | 22-28-2133 | A-42226-0083 | 31 | 22-28-2313 | A-42226-0101 | 13 | 22-28-2134 | A-42226-0118 | 31 | 22-28-2314 | A-42226-0136 | | | |
| 14 | 22-28-2143 | A-42226-0084 | 32 | 22-28-2323 | A-42226-0102 | 14 | 22-28-2144 | A-42226-0119 | 32 | 22-28-2324 | A-42226-0137 | | | |
| 15 | 22-28-2153 | A-42226-0085 | 33 | 22-28-2333 | A-42226-0103 | 15 | 22-28-2154 | A-42226-0120 | 33 | 22-28-2334 | A-42226-0138 | | | |
| 16 | 22-28-2163 | A-42226-0086 | 34 | 22-28-2343 | A-42226-0104 | 16 | 22-28-2164 | A-42226-0121 | 34 | 22-28-2344 | A-42226-0139 | | | |
| 17 | 22-28-2173 | A-42226-0087 | 35 | 22-28-2353 | A-42226-0105 | 17 | 22-28-2174 | A-42226-0122 | 35 | 22-28-2354 | A-42226-0140 | | | |
| 18 | 22-28-2183 | A-42226-0088 | 36 | 22-28-2363 | A-42226-0106 | 18 | 22-28-2184 | A-42226-0123 | 36 | 22-28-2364 | A-42226-0141 | | | |
| 19 | 22-28-2193 | A-42226-0089 | | | | 19 | 22-28-2194 | A-42226-0124 | | | | | | |
| REV: | | J | | | | TITLE: | | .100 POLARIZING BREAKAWAY HEADER ASSY. | | | | SHEET No. | | |
| | | | | | | | | | | | | - 3 - | | |
| DOCUMENT NUMBER: | | | CREATED / REVISED BY: | | | CHECKED BY: | | | APPROVED BY: | | | | | |
| SD- 42226 -001 | | | S. LINEHAN 03/04/2004 | | | K.SAMIEC 03/04/2003 | | | Y. MARGULIS 03/04/2004 | | | | | |
| <small>TEMPLATE FILENAME: PRODUCT_SPEC(SIZE_A)(V.1).DOC</small> | | | | | | | | | | | | | | |

| | | | | | |
|--|--|--|--|--|--|
| | | | | | |
|--|--|--|--|--|--|

| A-42226-0142/0176 | | | | | |
|--------------------|-----------------|-----------------|------|-----------------|--------------|
| HEADER NUMBER: | | 41410 | | | |
| PIN NUMBER: | | 42663-CFB208 | | | |
| PIN LENGTH: L | | .685/17.40 | | | |
| MATING LENGTH: M | | .295/7.49 | | | |
| GOLD POINT: G | | .140/3.56 | | | |
| PC TAIL LENGTH: P | | .135/3.43 | | | |
| TIN: T | | .100/2.54 | | | |
| DIMENSION Y | | .022/0.56 | | | |
| CKTS: | | 2-36 | | | |
| KINKS: | | YES | | | |
| REMOVED BACKWALLS: | | NO | | | |
| VOIDED CKTS: | | NONE | | | |
| PACKAGING: | | BULK 40873-0056 | | | |
| CKTS | MATERIAL NUMBER | ENG NUMBER | CKTS | MATERIAL NUMBER | ENG NUMBER |
| 02 | 22-28-2025 | A-42226-0142 | 20 | 22-28-2205 | A-42226-0160 |
| 03 | 22-28-2035 | A-42226-0143 | 21 | 22-28-2215 | A-42226-0161 |
| 04 | 22-28-2045 | A-42226-0144 | 22 | 22-28-2225 | A-42226-0162 |
| 05 | 22-28-2055 | A-42226-0145 | 23 | 22-28-2235 | A-42226-0163 |
| 06 | 22-28-2065 | A-42226-0146 | 24 | 22-28-2245 | A-42226-0164 |
| 07 | 22-28-2075 | A-42226-0147 | 25 | 22-28-2255 | A-42226-0165 |
| 08 | 22-28-2085 | A-42226-0148 | 26 | 22-28-2265 | A-42226-0166 |
| 09 | 22-28-2095 | A-42226-0149 | 27 | 22-28-2275 | A-42226-0167 |
| 10 | 22-28-2105 | A-42226-0150 | 28 | 22-28-2285 | A-42226-0168 |
| 11 | 22-28-2115 | A-42226-0151 | 29 | 22-28-2295 | A-42226-0169 |
| 12 | 22-28-2125 | A-42226-0152 | 30 | 22-28-2305 | A-42226-0170 |
| 13 | 22-28-2135 | A-42226-0153 | 31 | 22-28-2315 | A-42226-0171 |
| 14 | 22-28-2145 | A-42226-0154 | 32 | 22-28-2325 | A-42226-0172 |
| 15 | 22-28-2155 | A-42226-0155 | 33 | 22-28-2335 | A-42226-0173 |
| 16 | 22-28-2165 | A-42226-0156 | 34 | 22-28-2345 | A-42226-0174 |
| 17 | 22-28-2175 | A-42226-0157 | 35 | 22-28-2355 | A-42226-0175 |
| 18 | 22-28-2185 | A-42226-0158 | 36 | 22-28-2365 | A-42226-0176 |
| 19 | 22-28-2195 | A-42226-0159 | | | |

| A-42226-0177/0211 | | | | | |
|--------------------|-----------------|-----------------|------|-----------------|--------------|
| HEADER NUMBER: | | 41410 | | | |
| PIN NUMBER: | | 42663-CFB228 | | | |
| PIN LENGTH: L | | .685/17.40 | | | |
| MATING LENGTH: M | | .295/7.49 | | | |
| GOLD POINT: G | | .140/3.56 | | | |
| PC TAIL LENGTH: P | | .135/3.43 | | | |
| TIN: T | | .100/2.54 | | | |
| DIMENSION Y | | .022/0.56 | | | |
| CKTS: | | 2-36 | | | |
| KINKS: | | YES | | | |
| REMOVED BACKWALLS: | | NO | | | |
| VOIDED CKTS: | | NONE | | | |
| PACKAGING: | | BULK 40873-0056 | | | |
| CKTS | MATERIAL NUMBER | ENG NUMBER | CKTS | MATERIAL NUMBER | ENG NUMBER |
| 02 | 22-28-2026 | A-42226-0177 | 20 | 22-28-2206 | A-42226-0195 |
| 03 | 22-28-2036 | A-42226-0178 | 21 | 22-28-2216 | A-42226-0196 |
| 04 | 22-28-2046 | A-42226-0179 | 22 | 22-28-2226 | A-42226-0197 |
| 05 | 22-28-2056 | A-42226-0180 | 23 | 22-28-2236 | A-42226-0198 |
| 06 | 22-28-2066 | A-42226-0181 | 24 | 22-28-2246 | A-42226-0199 |
| 07 | 22-28-2076 | A-42226-0182 | 25 | 22-28-2256 | A-42226-0200 |
| 08 | 22-28-2086 | A-42226-0183 | 26 | 22-28-2266 | A-42226-0201 |
| 09 | 22-28-2096 | A-42226-0184 | 27 | 22-28-2276 | A-42226-0202 |
| 10 | 22-28-2106 | A-42226-0185 | 28 | 22-28-2286 | A-42226-0203 |
| 11 | 22-28-2116 | A-42226-0186 | 29 | 22-28-2296 | A-42226-0204 |
| 12 | 22-28-2126 | A-42226-0187 | 30 | 22-28-2306 | A-42226-0205 |
| 13 | 22-28-2136 | A-42226-0188 | 31 | 22-28-2316 | A-42226-0206 |
| 14 | 22-28-2146 | A-42226-0189 | 32 | 22-28-2326 | A-42226-0207 |
| 15 | 22-28-2156 | A-42226-0190 | 33 | 22-28-2336 | A-42226-0208 |
| 16 | 22-28-2166 | A-42226-0191 | 34 | 22-28-2346 | A-42226-0209 |
| 17 | 22-28-2176 | A-42226-0192 | 35 | 22-28-2356 | A-42226-0210 |
| 18 | 22-28-2186 | A-42226-0193 | 36 | 22-28-2366 | A-42226-0211 |
| 19 | 22-28-2196 | A-42226-0194 | | | |

| | | |
|---|---|---|
| REV: J | TITLE: .100 POLARIZING BREAKAWAY HEADER ASSY. | SHEET No. - 4 - |
| DOCUMENT NUMBER: SD- 42226 -001 | CREATED / REVISED BY: S. LINEHAN 03/04/2004 | CHECKED BY: K.SAMIEC 03/04/2003 |
| | APPROVED BY: Y. MARGULIS 03/04/2004 | |

TEMPLATE FILENAME: PRODUCT_SPEC(SIZE_A)(V.1).DOC

| | | | | | | | | | | | |
|--------------------|-----------------|--------------|-----------------|-----------------|--------------|--------------------|-----------------|--------------|-----------------|-----------------|--------------|
| A-42226-0213/0246 | | | | | | A-42226-0248/0281 | | | | | |
| HEADER NUMBER: | | | 41410 | | | HEADER NUMBER: | | | 41410 | | |
| PIN NUMBER: | | | 42663-CCA154 | | | PIN NUMBER: | | | 42663-CCB208 | | |
| PIN LENGTH: L | | | .670/17.02 | | | PIN LENGTH: L | | | .670/17.02 | | |
| MATING LENGTH: M | | | .295/7.49 | | | MATING LENGTH: M | | | .295/7.49 | | |
| GOLD POINT: G | | | N/A | | | GOLD POINT: G | | | .140/3.56 | | |
| PC TAIL LENGTH: P | | | .120/3.05 | | | PC TAIL LENGTH: P | | | .120/3.05 | | |
| TIN: T | | | OVERALL | | | TIN: T | | | .135/3.43 | | |
| DIMENSION Y | | | .022/0.56 | | | DIMENSION Y | | | .022/0.56 | | |
| CKTS: | | | 3-36 | | | CKTS: | | | 3-36 | | |
| KINKS: | | | NO | | | KINKS: | | | NO | | |
| REMOVED BACKWALLS: | | | YES | | | REMOVED BACKWALLS: | | | YES | | |
| VOIDED CKTS: | | | NONE | | | VOIDED CKTS: | | | NONE | | |
| PACKAGING: | | | BULK 40873-0056 | | | PACKAGING: | | | BULK 40873-0056 | | |
| CKTS | MATERIAL NUMBER | ENG NUMBER | CKTS | MATERIAL NUMBER | ENG NUMBER | CKTS | MATERIAL NUMBER | ENG NUMBER | CKTS | MATERIAL NUMBER | ENG NUMBER |
| 02 | | | 20 | 22-28-2207 | A-42226-0230 | 02 | | | 20 | 22-28-2208 | A-42226-0265 |
| 03 | 22-28-2037 | A-42226-0213 | 21 | 22-28-2217 | A-42226-0231 | 03 | 22-28-2038 | A-42226-0248 | 21 | 22-28-2218 | A-42226-0266 |
| 04 | 22-28-2047 | A-42226-0214 | 22 | 22-28-2227 | A-42226-0232 | 04 | 22-28-2048 | A-42226-0249 | 22 | 22-28-2228 | A-42226-0267 |
| 05 | 22-28-2057 | A-42226-0215 | 23 | 22-28-2237 | A-42226-0233 | 05 | 22-28-2058 | A-42226-0250 | 23 | 22-28-2238 | A-42226-0268 |
| 06 | 22-28-2077 | A-42226-0216 | 24 | 22-28-2247 | A-42226-0234 | 06 | 22-28-2068 | A-42226-0251 | 24 | 22-28-2248 | A-42226-0269 |
| 07 | 22-28-2077 | A-42226-0217 | 25 | 22-28-2257 | A-42226-0235 | 07 | 22-28-2078 | A-42226-0252 | 25 | 22-28-2258 | A-42226-0270 |
| 08 | 22-28-2087 | A-42226-0218 | 26 | 22-28-2267 | A-42226-0236 | 08 | 22-28-2088 | A-42226-0253 | 26 | 22-28-2268 | A-42226-0271 |
| 09 | 22-28-2097 | A-42226-0219 | 27 | 22-28-2277 | A-42226-0237 | 09 | 22-28-2098 | A-42226-0254 | 27 | 22-28-2278 | A-42226-0272 |
| 10 | 22-28-2107 | A-42226-0220 | 28 | 22-28-2287 | A-42226-0238 | 10 | 22-28-2108 | A-42226-0255 | 28 | 22-28-2288 | A-42226-0273 |
| 11 | 22-28-2117 | A-42226-0221 | 29 | 22-28-2297 | A-42226-0239 | 11 | 22-28-2118 | A-42226-0256 | 29 | 22-28-2298 | A-42226-0274 |
| 12 | 22-28-2127 | A-42226-0222 | 30 | 22-28-2307 | A-42226-0240 | 12 | 22-28-2128 | A-42226-0257 | 30 | 22-28-2308 | A-42226-0275 |
| 13 | 22-28-2137 | A-42226-0223 | 31 | 22-28-2317 | A-42226-0241 | 13 | 22-28-2138 | A-42226-0258 | 31 | 22-28-2318 | A-42226-0276 |
| 14 | 22-28-2147 | A-42226-0224 | 32 | 22-28-2327 | A-42226-0242 | 14 | 22-28-2148 | A-42226-0259 | 32 | 22-28-2328 | A-42226-0277 |
| 15 | 22-28-2157 | A-42226-0225 | 33 | 22-28-2337 | A-42226-0243 | 15 | 22-28-2158 | A-42226-0260 | 33 | 22-28-2338 | A-42226-0278 |
| 16 | 22-28-2167 | A-42226-0226 | 34 | 22-28-2347 | A-42226-0244 | 16 | 22-28-2168 | A-42226-0261 | 34 | 22-28-2348 | A-42226-0279 |
| 17 | 22-28-2177 | A-42226-0227 | 35 | 22-28-2357 | A-42226-0245 | 17 | 22-28-2178 | A-42226-0262 | 35 | 22-28-2358 | A-42226-0280 |
| 18 | 22-28-2187 | A-42226-0228 | 36 | 22-28-2367 | A-42226-0246 | 18 | 22-28-2188 | A-42226-0263 | 36 | 22-28-2368 | A-42226-0281 |
| 19 | 22-28-2197 | A-42226-0229 | | | | 19 | 22-28-2198 | A-42226-0264 | | | |

| | | | | | |
|------------------|-----------------------|-----------------------|---|-------------|----------------------------|
| REV: | J | TITLE: | .100 POLARIZING BREAKAWAY HEADER ASSY. | SHEET No. | - 5 - |
| DOCUMENT NUMBER: | SD- 42226 -001 | CREATED / REVISED BY: | S. LINEHAN 03/04/2004 | CHECKED BY: | K.SAMIEC 03/04/2003 |
| | | APPROVED BY: | Y. MARGULIS 03/04/2004 | | |

TEMPLATE FILENAME: PRODUCT_SPEC(SIZE_A)(V.1).DOC

| A-42226-0283/0316 | | | | | | A-42226-0318/0351 | | | | | | | | | |
|---|-----------------|-----------------|------|------------------------------|--------------|--------------------|-----------------|---|------|-----------------|--------------|-------------------------------|--|--|--|
| HEADER NUMBER: | | 41410 | | | | HEADER NUMBER: | | 41410 | | | | | | | |
| PIN NUMBER: | | 42663-CCB228 | | | | PIN NUMBER: | | 42663-CFA154 | | | | | | | |
| PIN LENGTH: L | | .670/17.02 | | | | PIN LENGTH: L | | .685/17.40 | | | | | | | |
| MATING LENGTH: M | | .295/7.49 | | | | MATING LENGTH: M | | .295/7.49 | | | | | | | |
| GOLD POINT: G | | .140/3.56 | | | | GOLD POINT: G | | N/A | | | | | | | |
| PC TAIL LENGTH: P | | .120/3.05 | | | | PC TAIL LENGTH: P | | .135/3.43 | | | | | | | |
| TIN: T | | .135/3.43 | | | | TIN: T | | OVERALL | | | | | | | |
| DIMENSION Y | | .022/0.56 | | | | DIMENSION Y | | .022/0.56 | | | | | | | |
| CKTS: | | 3-36 | | | | CKTS: | | 3-36 | | | | | | | |
| KINKS: | | NO | | | | KINKS: | | YES | | | | | | | |
| REMOVED BACKWALLS: | | YES | | | | REMOVED BACKWALLS: | | YES | | | | | | | |
| VOIDED CKTS: | | NONE | | | | VOIDED CKTS: | | NONE | | | | | | | |
| PACKAGING: | | BULK 40873-0056 | | | | PACKAGING: | | BULK 40873-0056 | | | | | | | |
| CKTS | MATERIAL NUMBER | ENG NUMBER | CKTS | MATERIAL NUMBER | ENG NUMBER | CKTS | MATERIAL NUMBER | ENG NUMBER | CKTS | MATERIAL NUMBER | ENG NUMBER | | | | |
| 02 | | | 20 | 22-28-2209 | A-42226-0300 | 02 | | | 20 | 22-31-4200 | A-42226-0335 | | | | |
| 03 | 22-28-2039 | A-42226-0283 | 21 | 22-28-2219 | A-42226-0301 | 03 | 22-31-4030 | A-42226-0318 | 21 | 22-31-4210 | A-42226-0336 | | | | |
| 04 | 22-28-2049 | A-42226-0284 | 22 | 22-28-2229 | A-42226-0302 | 04 | 22-31-4040 | A-42226-0319 | 22 | 22-31-4220 | A-42226-0337 | | | | |
| 05 | 22-28-2059 | A-42226-0285 | 23 | 22-28-2239 | A-42226-0303 | 05 | 22-31-4050 | A-42226-0320 | 23 | 22-31-4230 | A-42226-0338 | | | | |
| 06 | 22-28-2069 | A-42226-0286 | 24 | 22-28-2249 | A-42226-0304 | 06 | 22-31-4060 | A-42226-0321 | 24 | 22-31-4240 | A-42226-0339 | | | | |
| 07 | 22-28-2079 | A-42226-0287 | 25 | 22-28-2259 | A-42226-0305 | 07 | 22-31-4070 | A-42226-0322 | 25 | 22-31-4250 | A-42226-0340 | | | | |
| 08 | 22-28-2089 | A-42226-0288 | 26 | 22-28-2269 | A-42226-0306 | 08 | 22-31-4080 | A-42226-0323 | 26 | 22-31-4260 | A-42226-0341 | | | | |
| 09 | 22-28-2099 | A-42226-0289 | 27 | 22-28-2279 | A-42226-0307 | 09 | 22-31-4090 | A-42226-0324 | 27 | 22-31-4270 | A-42226-0342 | | | | |
| 10 | 22-28-2109 | A-42226-0290 | 28 | 22-28-2289 | A-42226-0308 | 10 | 22-31-4100 | A-42226-0325 | 28 | 22-31-4280 | A-42226-0343 | | | | |
| 11 | 22-28-2119 | A-42226-0291 | 29 | 22-28-2299 | A-42226-0309 | 11 | 22-31-4110 | A-42226-0326 | 29 | 22-31-4200 | A-42226-0344 | | | | |
| 12 | 22-28-2129 | A-42226-0292 | 30 | 22-28-2309 | A-42226-0310 | 12 | 22-31-4120 | A-42226-0327 | 30 | 22-31-4300 | A-42226-0345 | | | | |
| 13 | 22-28-2139 | A-42226-0293 | 31 | 22-28-2319 | A-42226-0311 | 13 | 22-31-4130 | A-42226-0328 | 31 | 22-31-4310 | A-42226-0346 | | | | |
| 14 | 22-28-2149 | A-42226-0294 | 32 | 22-28-2329 | A-42226-0312 | 14 | 22-31-4140 | A-42226-0329 | 32 | 22-31-4320 | A-42226-0347 | | | | |
| 15 | 22-28-2159 | A-42226-0295 | 33 | 22-28-2339 | A-42226-0313 | 15 | 22-31-4150 | A-42226-0330 | 33 | 22-31-4330 | A-42226-0348 | | | | |
| 16 | 22-28-2169 | A-42226-0296 | 34 | 22-28-2349 | A-42226-0314 | 16 | 22-31-4160 | A-42226-0331 | 34 | 22-31-4340 | A-42226-0349 | | | | |
| 17 | 22-28-2179 | A-42226-0297 | 35 | 22-28-2359 | A-42226-0315 | 17 | 22-31-4170 | A-42226-0332 | 35 | 22-31-4350 | A-42226-0350 | | | | |
| 18 | 22-28-2189 | A-42226-0298 | 36 | 22-28-2369 | A-42226-0316 | 18 | 22-31-4180 | A-42226-0333 | 36 | 22-31-4360 | A-42226-0351 | | | | |
| 19 | 22-28-2199 | A-42226-0299 | | | | 19 | 22-31-4190 | A-42226-0334 | | | | | | | |
| REV: | | J | | | | TITLE: | | .100 POLARIZING BREAKAWAY HEADER ASSY. | | | | SHEET No. | | | |
| | | | | | | | | | | | | - 6 - | | | |
| DOCUMENT NUMBER: | | | | CREATED / REVISED BY: | | | | CHECKED BY: | | | | APPROVED BY: | | | |
| SD- 42226 -001 | | | | S. LINEHAN 03/04/2004 | | | | K.SAMIEC 03/04/2003 | | | | Y. MARGULIS 03/04/2004 | | | |
| <small>TEMPLATE FILENAME: PRODUCT_SPEC(SIZE_A)(V.1).DOC</small> | | | | | | | | | | | | | | | |

| A-42226-0422/0456 | | | | | |
|--|-----------------|------------------------------|------|---|----------------------------------|
| HEADER NUMBER: | | 41410 | | | |
| PIN NUMBER: | | 42663-CFA154 | | | |
| PIN LENGTH: L | | .685/17.40 | | | |
| MATING LENGTH: M | | .295/7.49 | | | |
| GOLD POINT: G | | N/A | | | |
| PC TAIL LENGTH: P | | .135/3.43 | | | |
| TIN: T | | OVERALL | | | |
| DIMENSION Y | | .022/0.56 | | | |
| CKTS: | | 2-36 | | | |
| KINKS: | | NO | | | |
| REMOVED BACKWALLS: | | NO | | | |
| VOIDED CKTS: | | NONE | | | |
| PACKAGING: | | BULK 40873-0056 | | | |
| CKTS | MATERIAL NUMBER | ENG NUMBER | CKTS | MATERIAL NUMBER | ENG NUMBER |
| 02 | 42226-0422 | A-42226-0422 | 20 | 42226-0440 | A-42226-0440 |
| 03 | 42226-0423 | A-42226-0423 | 21 | 42226-0441 | A-42226-0441 |
| 04 | 42226-0424 | A-42226-0424 | 22 | 42226-0442 | A-42226-0442 |
| 05 | 42226-0425 | A-42226-0425 | 23 | 42226-0443 | A-42226-0443 |
| 06 | 42226-0426 | A-42226-0426 | 24 | 42226-0444 | A-42226-0444 |
| 07 | 42226-0427 | A-42226-0427 | 25 | 42226-0445 | A-42226-0445 |
| 08 | 42226-0428 | A-42226-0428 | 26 | 42226-0446 | A-42226-0446 |
| 09 | 42226-0429 | A-42226-0429 | 27 | 42226-0447 | A-42226-0447 |
| 10 | 42226-0430 | A-42226-0430 | 28 | 42226-0448 | A-42226-0448 |
| 11 | 42226-0431 | A-42226-0431 | 29 | 42226-0449 | A-42226-0449 |
| 12 | 42226-0432 | A-42226-0432 | 30 | 42226-0450 | A-42226-0450 |
| 13 | 42226-0433 | A-42226-0433 | 31 | 42226-0451 | A-42226-0451 |
| 14 | 42226-0434 | A-42226-0434 | 32 | 42226-0452 | A-42226-0452 |
| 15 | 42226-0435 | A-42226-0435 | 33 | 42226-0453 | A-42226-0453 |
| 16 | 42226-0436 | A-42226-0436 | 34 | 42226-0454 | A-42226-0454 |
| 17 | 42226-0437 | A-42226-0437 | 35 | 42226-0455 | A-42226-0455 |
| 18 | 42226-0438 | A-42226-0438 | 36 | 42226-0456 | A-42226-0456 |
| 19 | 42226-0439 | A-42226-0439 | | | |
| REV: | | | | TITLE: | |
| J | | | | .100 POLARIZING BREAKAWAY HEADER ASSY. | <u>SHEET No.</u> - 7 - |
| DOCUMENT NUMBER: | | CREATED / REVISED BY: | | CHECKED BY: | APPROVED BY: |
| SD- 42226 -001 | | S. LINEHAN 03/04/2004 | | K.SAMIEC 03/04/2003 | Y. MARGULIS 03/04/2004 |
| TEMPLATE FILENAME: PRODUCT_SPEC(SIZE_A)(V.1).DOC | | | | | |