

PLEASE CHECK WWW.MOLEX.COM FOR LATEST PART INFORMATION

Part Number: [0022282060](#)
Status: **Active**
Description: 2.54mm (.100") Pitch KK® Header, Breakaway, Right Angle, with Plastic Polarizing Peg, 6 Circuits, Tin (Sn) Plating

Documents:

[3D Model](#)
[Packaging Specification \(PDF\)](#)
[Drawing \(PDF\)](#)
[Product Specification PS-10-07 \(PDF\)](#)
[RoHS Certificate of Compliance \(PDF\)](#)

Agency Certification

CSA LR19980
UL E29179

General

Product Family PCB Headers
Series 42226
Application Wire-to-Board
Product Name KK®

Physical

Breakaway Yes
Circuits (Loaded) 6
Circuits (maximum) 6
Color - Resin Black
Durability (mating cycles max) 25
Flammability 94V-0
Glow-Wire Compliant No
Lock to Mating Part None
Material - Metal Brass
Material - Plating Mating Tin
Material - Plating Termination Tin
Material - Resin Nylon
Number of Rows 1
Orientation Right Angle
PC Tail Length (in) 0.120 In
PC Tail Length (mm) 3.05 mm
PCB Locator No
PCB Retention None
PCB Thickness Recommended (in) 0.062 In
PCB Thickness Recommended (mm) 1.60 mm
Packaging Type Bag
Pitch - Mating Interface (in) 0.100 In
Pitch - Mating Interface (mm) 2.54 mm
Plating min: Mating (µin) 100
Plating min: Mating (µm) 2.5
Plating min: Termination (µin) 100
Plating min: Termination (µm) 2.5
Polarized to Mating Part No
Polarized to PCB No
Shrouded No
Stackable No
Temperature Range - Operating 0°C to +75°C
Termination Interface: Style Through Hole

Electrical

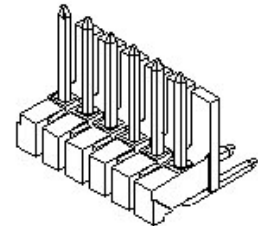


image - Reference only

Series

EU RoHS

**ELV and RoHS
Compliant**

REACH SVHC

Contains SVHC: No

Halogen-Free

Status

Not Reviewed

**Need more information on product
environmental compliance?**

Email productcompliance@molex.com
For a multiple part number RoHS Certificate of
Compliance, [click here](#)

Please visit the [Contact Us](#) section for any
non-product compliance questions.

China RoHS



Search Parts in this Series

[42226Series](#)

Mates With

[2695](#) , [6471](#) , [7880](#) , [4455](#) , [7720](#)

Current - Maximum per Contact	4A
Voltage - Maximum	250V

Solder Process Data

Duration at Max. Process Temperature (seconds)	5
Lead-free Process Capability	Wave Capable (TH only)
Max. Cycles at Max. Process Temperature	1
Process Temperature max. C	235

Material Info

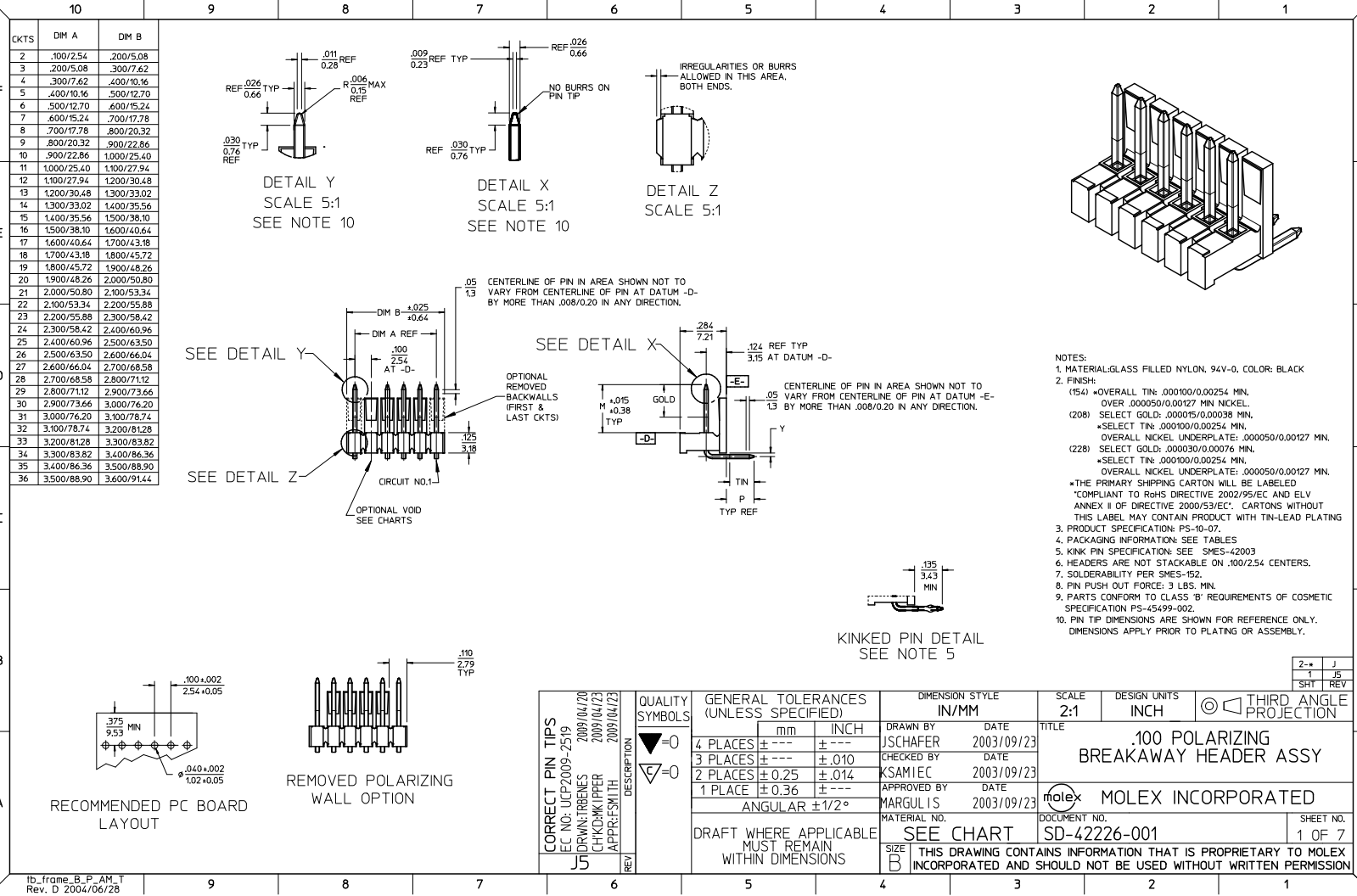
Old Part Number	42226-0006
-----------------	------------

Reference - Drawing Numbers

Product Specification	PS-10-07
Sales Drawing	SD-42226-001

This document was generated on 04/12/2010

PLEASE CHECK WWW.MOLEX.COM FOR LATEST PART INFORMATION



10	9	8	7	6	5	4	3	2	1
CKTS	DIM A	DIM B							
2	.100/2.54	.200/5.08							
3	.200/5.08	.300/7.62							
4	.300/7.62	.400/10.16							
5	.400/10.16	.500/12.70							
6	.500/12.70	.600/15.24							
7	.600/15.24	.700/17.78							
8	.700/17.78	.800/20.32							
9	.800/20.32	.900/22.86							
10	.900/22.86	1.000/25.40							
11	1.000/25.40	1.100/27.94							
12	1.100/27.94	1.200/30.48							
13	1.200/30.48	1.300/33.02							
14	1.300/33.02	1.400/35.56							
15	1.400/35.56	1.500/38.10							
16	1.500/38.10	1.600/40.64							
17	1.600/40.64	1.700/43.18							
18	1.700/43.18	1.800/45.72							
19	1.800/45.72	1.900/48.26							
20	1.900/48.26	2.000/50.80							
21	2.000/50.80	2.100/53.34							
22	2.100/53.34	2.200/55.88							
23	2.200/55.88	2.300/58.42							
24	2.300/58.42	2.400/60.96							
25	2.400/60.96	2.500/63.50							
26	2.500/63.50	2.600/66.04							
27	2.600/66.04	2.700/68.58							
28	2.700/68.58	2.800/71.12							
29	2.800/71.12	2.900/73.66							
30	2.900/73.66	3.000/76.20							
31	3.000/76.20	3.100/78.74							
32	3.100/78.74	3.200/81.28							
33	3.200/81.28	3.300/83.82							
34	3.300/83.82	3.400/86.36							
35	3.400/86.36	3.500/88.90							
36	3.500/88.90	3.600/91.44							

100 POLARIZING BREAKAWAY HEADER ASSY	MOLEX INCORPORATED
SD-42226-001	1 OF 7

A-42226-0002/0036						A-42226-0037/0071					
HEADER NUMBER:		41410				HEADER NUMBER:		41410			
PIN NUMBER:		42663-CCA154				PIN NUMBER:		42663-CCB208			
PIN LENGTH: L		.670/17.02				PIN LENGTH: L		.670/17.02			
MATING LENGTH: M		.295/7.49				MATING LENGTH: M		.295/7.49			
GOLD POINT: G		N/A				GOLD POINT: G		.140/3.56			
PC TAIL LENGTH: P		.120/3.05				PC TAIL LENGTH: P		.120/3.05			
TIN: T		OVERALL				TIN: T		.135/3.43			
DIMENSION Y		.022/0.56				DIMENSION Y		.022/0.56			
CKTS:		2-36				CKTS:		2-36			
KINKS:		NO				KINKS:		NO			
REMOVED BACKWALLS:		NO				REMOVED BACKWALLS:		NO			
VOIDED CKTS:		NONE				VOIDED CKTS:		NONE			
PACKAGING:		BULK 40873-0056				PACKAGING:		BULK 40873-0056			
CKTS	MATERIAL NUMBER	ENG NUMBER	CKTS	MATERIAL NUMBER	ENG NUMBER	CKTS	MATERIAL NUMBER	ENG NUMBER	CKTS	MATERIAL NUMBER	ENG NUMBER
02	22-28-2020	A-42226-0002	20	22-28-2200	A-42226-0020	02	22-28-2022	A-42226-0037	20	22-28-2202	A-42226-0055
03	22-28-2030	A-42226-0003	21	22-28-2210	A-42226-0021	03	22-28-2032	A-42226-0038	21	22-28-2212	A-42226-0056
04	22-28-2040	A-42226-0004	22	22-28-2220	A-42226-0022	04	22-28-2042	A-42226-0039	22	22-28-2222	A-42226-0057
05	22-28-2050	A-42226-0005	23	22-28-2230	A-42226-0023	05	22-28-2052	A-42226-0040	23	22-28-2232	A-42226-0058
06	22-28-2060	A-42226-0006	24	22-28-2240	A-42226-0024	06	22-28-2062	A-42226-0041	24	22-28-2242	A-42226-0059
07	22-28-2070	A-42226-0007	25	22-28-2250	A-42226-0025	07	22-28-2072	A-42226-0042	25	22-28-2252	A-42226-0060
08	22-28-2080	A-42226-0008	26	22-28-2260	A-42226-0026	08	22-28-2082	A-42226-0043	26	22-28-2262	A-42226-0061
09	22-28-2090	A-42226-0009	27	22-28-2270	A-42226-0027	09	22-28-2092	A-42226-0044	27	22-28-2272	A-42226-0062
10	22-28-2100	A-42226-0010	28	22-28-2280	A-42226-0028	10	22-28-2102	A-42226-0045	28	22-28-2282	A-42226-0063
11	22-28-2110	A-42226-0011	29	22-28-2290	A-42226-0029	11	22-28-2112	A-42226-0046	29	22-28-2292	A-42226-0064
12	22-28-2120	A-42226-0012	30	22-28-2300	A-42226-0030	12	22-28-2122	A-42226-0047	30	22-28-2302	A-42226-0065
13	22-28-2130	A-42226-0013	31	22-28-2310	A-42226-0031	13	22-28-2132	A-42226-0048	31	22-28-2312	A-42226-0066
14	22-28-2140	A-42226-0014	32	22-28-2320	A-42226-0032	14	22-28-2142	A-42226-0049	32	22-28-2322	A-42226-0067
15	22-28-2150	A-42226-0015	33	22-28-2330	A-42226-0033	15	22-28-2152	A-42226-0050	33	22-28-2332	A-42226-0068
16	22-28-2160	A-42226-0016	34	22-28-2340	A-42226-0034	16	22-28-2162	A-42226-0051	34	22-28-2342	A-42226-0069
17	22-28-2170	A-42226-0017	35	22-28-2350	A-42226-0035	17	22-28-2172	A-42226-0052	35	22-28-2352	A-42226-0070
18	22-28-2180	A-42226-0018	36	22-28-2360	A-42226-0036	18	22-28-2182	A-42226-0053	36	22-28-2362	A-42226-0071
19	22-28-2190	A-42226-0019				19	22-28-2192	A-42226-0054			
REV: J		TITLE: .100 POLARIZING BREAKAWAY HEADER ASSY.						SHEET No. - 2 -			
DOCUMENT NUMBER: SD- 42226 -001				CREATED / REVISED BY: S. LINEHAN 03/04/2004		CHECKED BY: K.SAMIEC 03/04/2003		APPROVED BY: Y. MARGULIS 03/04/2004			
TEMPLATE FILENAME: PRODUCT_SPEC(SIZE_A)(V.1).DOC											

A-42226-0072/0106						A-42226-0107/0141					
HEADER NUMBER:		41410				HEADER NUMBER:		41410			
PIN NUMBER:		42663-CCB228				PIN NUMBER:		42663-CFA154			
PIN LENGTH: L		.670/17.02				PIN LENGTH: L		.685/17.40			
MATING LENGTH: M		.295/7.49				MATING LENGTH: M		.295/7.49			
GOLD POINT: G		.140/3.56				GOLD POINT: G		N/A			
PC TAIL LENGTH: P		.120/3.05				PC TAIL LENGTH: P		.135/3.43			
TIN: T		.135/3.43				TIN: T		OVERALL			
DIMENSION Y		.022/0.56				DIMENSION Y		.022/0.56			
CKTS:		2-36				CKTS:		2-36			
KINKS:		NO				KINKS:		YES			
REMOVED BACKWALLS:		NO				REMOVED BACKWALLS:		NO			
VOIDED CKTS:		NONE				VOIDED CKTS:		NONE			
PACKAGING:		BULK 40873-0056				PACKAGING:		BULK 40873-0056			
CKTS	MATERIAL NUMBER	ENG NUMBER	CKTS	MATERIAL NUMBER	ENG NUMBER	CKTS	MATERIAL NUMBER	ENG NUMBER	CKTS	MATERIAL NUMBER	ENG NUMBER
02	22-28-2023	A-42226-0072	20	22-28-2203	A-42226-0090	02	22-28-2024	A-42226-0107	20	22-28-2204	A-42226-0125
03	22-28-2033	A-42226-0073	21	22-28-2213	A-42226-0091	03	22-28-2034	A-42226-0108	21	22-28-2214	A-42226-0126
04	22-28-2043	A-42226-0074	22	22-28-2223	A-42226-0092	04	22-28-2044	A-42226-0109	22	22-28-2224	A-42226-0127
05	22-28-2053	A-42226-0075	23	22-28-2233	A-42226-0093	05	22-28-2054	A-42226-0110	23	22-28-2234	A-42226-0128
06	22-28-2063	A-42226-0076	24	22-28-2243	A-42226-0094	06	22-28-2064	A-42226-0111	24	22-28-2244	A-42226-0129
07	22-28-2073	A-42226-0077	25	22-28-2253	A-42226-0095	07	22-28-2074	A-42226-0112	25	22-28-2254	A-42226-0130
08	22-28-2083	A-42226-0078	26	22-28-2263	A-42226-0096	08	22-28-2084	A-42226-0113	26	22-28-2264	A-42226-0131
09	22-28-2093	A-42226-0079	27	22-28-2273	A-42226-0097	09	22-28-2094	A-42226-0114	27	22-28-2274	A-42226-0132
10	22-28-2103	A-42226-0080	28	22-28-2283	A-42226-0098	10	22-28-2104	A-42226-0115	28	22-28-2284	A-42226-0133
11	22-28-2113	A-42226-0081	29	22-28-2293	A-42226-0099	11	22-28-2114	A-42226-0116	29	22-28-2294	A-42226-0134
12	22-28-2123	A-42226-0082	30	22-28-2303	A-42226-0100	12	22-28-2124	A-42226-0117	30	22-28-2304	A-42226-0135
13	22-28-2133	A-42226-0083	31	22-28-2313	A-42226-0101	13	22-28-2134	A-42226-0118	31	22-28-2314	A-42226-0136
14	22-28-2143	A-42226-0084	32	22-28-2323	A-42226-0102	14	22-28-2144	A-42226-0119	32	22-28-2324	A-42226-0137
15	22-28-2153	A-42226-0085	33	22-28-2333	A-42226-0103	15	22-28-2154	A-42226-0120	33	22-28-2334	A-42226-0138
16	22-28-2163	A-42226-0086	34	22-28-2343	A-42226-0104	16	22-28-2164	A-42226-0121	34	22-28-2344	A-42226-0139
17	22-28-2173	A-42226-0087	35	22-28-2353	A-42226-0105	17	22-28-2174	A-42226-0122	35	22-28-2354	A-42226-0140
18	22-28-2183	A-42226-0088	36	22-28-2363	A-42226-0106	18	22-28-2184	A-42226-0123	36	22-28-2364	A-42226-0141
19	22-28-2193	A-42226-0089				19	22-28-2194	A-42226-0124			
REV: J		TITLE: .100 POLARIZING BREAKAWAY HEADER ASSY.						SHEET No. - 3 -			
DOCUMENT NUMBER: SD- 42226 -001				CREATED / REVISED BY: S. LINEHAN 03/04/2004		CHECKED BY: K.SAMIEC 03/04/2003		APPROVED BY: Y. MARGULIS 03/04/2004			
TEMPLATE FILENAME: PRODUCT_SPEC(SIZE_A)(V.1).DOC											

A-42226-0142/0176						A-42226-0177/0211					
HEADER NUMBER:		41410				HEADER NUMBER:		41410			
PIN NUMBER:		42663-CFB208				PIN NUMBER:		42663-CFB228			
PIN LENGTH: L		.685/17.40				PIN LENGTH: L		.685/17.40			
MATING LENGTH: M		.295/7.49				MATING LENGTH: M		.295/7.49			
GOLD POINT: G		.140/3.56				GOLD POINT: G		.140/3.56			
PC TAIL LENGTH: P		.135/3.43				PC TAIL LENGTH: P		.135/3.43			
TIN: T		.100/2.54				TIN: T		.100/2.54			
DIMENSION Y		.022/0.56				DIMENSION Y		.022/0.56			
CKTS:		2-36				CKTS:		2-36			
KINKS:		YES				KINKS:		YES			
REMOVED BACKWALLS:		NO				REMOVED BACKWALLS:		NO			
VOIDED CKTS:		NONE				VOIDED CKTS:		NONE			
PACKAGING:		BULK 40873-0056				PACKAGING:		BULK 40873-0056			
CKTS	MATERIAL NUMBER	ENG NUMBER	CKTS	MATERIAL NUMBER	ENG NUMBER	CKTS	MATERIAL NUMBER	ENG NUMBER	CKTS	MATERIAL NUMBER	ENG NUMBER
02	22-28-2025	A-42226-0142	20	22-28-2205	A-42226-0160	02	22-28-2026	A-42226-0177	20	22-28-2206	A-42226-0195
03	22-28-2035	A-42226-0143	21	22-28-2215	A-42226-0161	03	22-28-2036	A-42226-0178	21	22-28-2216	A-42226-0196
04	22-28-2045	A-42226-0144	22	22-28-2225	A-42226-0162	04	22-28-2046	A-42226-0179	22	22-28-2226	A-42226-0197
05	22-28-2055	A-42226-0145	23	22-28-2235	A-42226-0163	05	22-28-2056	A-42226-0180	23	22-28-2236	A-42226-0198
06	22-28-2065	A-42226-0146	24	22-28-2245	A-42226-0164	06	22-28-2066	A-42226-0181	24	22-28-2246	A-42226-0199
07	22-28-2075	A-42226-0147	25	22-28-2255	A-42226-0165	07	22-28-2076	A-42226-0182	25	22-28-2256	A-42226-0200
08	22-28-2085	A-42226-0148	26	22-28-2265	A-42226-0166	08	22-28-2086	A-42226-0183	26	22-28-2266	A-42226-0201
09	22-28-2095	A-42226-0149	27	22-28-2275	A-42226-0167	09	22-28-2096	A-42226-0184	27	22-28-2276	A-42226-0202
10	22-28-2105	A-42226-0150	28	22-28-2285	A-42226-0168	10	22-28-2106	A-42226-0185	28	22-28-2286	A-42226-0203
11	22-28-2115	A-42226-0151	29	22-28-2295	A-42226-0169	11	22-28-2116	A-42226-0186	29	22-28-2296	A-42226-0204
12	22-28-2125	A-42226-0152	30	22-28-2305	A-42226-0170	12	22-28-2126	A-42226-0187	30	22-28-2306	A-42226-0205
13	22-28-2135	A-42226-0153	31	22-28-2315	A-42226-0171	13	22-28-2136	A-42226-0188	31	22-28-2316	A-42226-0206
14	22-28-2145	A-42226-0154	32	22-28-2325	A-42226-0172	14	22-28-2146	A-42226-0189	32	22-28-2326	A-42226-0207
15	22-28-2155	A-42226-0155	33	22-28-2335	A-42226-0173	15	22-28-2156	A-42226-0190	33	22-28-2336	A-42226-0208
16	22-28-2165	A-42226-0156	34	22-28-2345	A-42226-0174	16	22-28-2166	A-42226-0191	34	22-28-2346	A-42226-0209
17	22-28-2175	A-42226-0157	35	22-28-2355	A-42226-0175	17	22-28-2176	A-42226-0192	35	22-28-2356	A-42226-0210
18	22-28-2185	A-42226-0158	36	22-28-2365	A-42226-0176	18	22-28-2186	A-42226-0193	36	22-28-2366	A-42226-0211
19	22-28-2195	A-42226-0159				19	22-28-2196	A-42226-0194			
REV: J						TITLE: .100 POLARIZING BREAKAWAY HEADER ASSY.				SHEET No. - 4 -	
DOCUMENT NUMBER: SD- 42226 -001				CREATED / REVISED BY: S. LINEHAN 03/04/2004		CHECKED BY: K.SAMIEC 03/04/2003		APPROVED BY: Y. MARGULIS 03/04/2004			
TEMPLATE FILENAME: PRODUCT_SPEC(SIZE_A)(V.1).DOC											

A-42226-0213/0246						A-42226-0248/0281									
HEADER NUMBER:		41410				HEADER NUMBER:		41410							
PIN NUMBER:		42663-CCA154				PIN NUMBER:		42663-CCB208							
PIN LENGTH: L		.670/17.02				PIN LENGTH: L		.670/17.02							
MATING LENGTH: M		.295/7.49				MATING LENGTH: M		.295/7.49							
GOLD POINT: G		N/A				GOLD POINT: G		.140/3.56							
PC TAIL LENGTH: P		.120/3.05				PC TAIL LENGTH: P		.120/3.05							
TIN: T		OVERALL				TIN: T		.135/3.43							
DIMENSION Y		.022/0.56				DIMENSION Y		.022/0.56							
CKTS:		3-36				CKTS:		3-36							
KINKS:		NO				KINKS:		NO							
REMOVED BACKWALLS:		YES				REMOVED BACKWALLS:		YES							
VOIDED CKTS:		NONE				VOIDED CKTS:		NONE							
PACKAGING:		BULK 40873-0056				PACKAGING:		BULK 40873-0056							
CKTS	MATERIAL NUMBER	ENG NUMBER	CKTS	MATERIAL NUMBER	ENG NUMBER	CKTS	MATERIAL NUMBER	ENG NUMBER	CKTS	MATERIAL NUMBER	ENG NUMBER				
02			20	22-28-2207	A-42226-0230	02			20	22-28-2208	A-42226-0265				
03	22-28-2037	A-42226-0213	21	22-28-2217	A-42226-0231	03	22-28-2038	A-42226-0248	21	22-28-2218	A-42226-0266				
04	22-28-2047	A-42226-0214	22	22-28-2227	A-42226-0232	04	22-28-2048	A-42226-0249	22	22-28-2228	A-42226-0267				
05	22-28-2057	A-42226-0215	23	22-28-2237	A-42226-0233	05	22-28-2058	A-42226-0250	23	22-28-2238	A-42226-0268				
06	22-28-2077	A-42226-0216	24	22-28-2247	A-42226-0234	06	22-28-2068	A-42226-0251	24	22-28-2248	A-42226-0269				
07	22-28-2077	A-42226-0217	25	22-28-2257	A-42226-0235	07	22-28-2078	A-42226-0252	25	22-28-2258	A-42226-0270				
08	22-28-2087	A-42226-0218	26	22-28-2267	A-42226-0236	08	22-28-2088	A-42226-0253	26	22-28-2268	A-42226-0271				
09	22-28-2097	A-42226-0219	27	22-28-2277	A-42226-0237	09	22-28-2098	A-42226-0254	27	22-28-2278	A-42226-0272				
10	22-28-2107	A-42226-0220	28	22-28-2287	A-42226-0238	10	22-28-2108	A-42226-0255	28	22-28-2288	A-42226-0273				
11	22-28-2117	A-42226-0221	29	22-28-2297	A-42226-0239	11	22-28-2118	A-42226-0256	29	22-28-2298	A-42226-0274				
12	22-28-2127	A-42226-0222	30	22-28-2307	A-42226-0240	12	22-28-2128	A-42226-0257	30	22-28-2308	A-42226-0275				
13	22-28-2137	A-42226-0223	31	22-28-2317	A-42226-0241	13	22-28-2138	A-42226-0258	31	22-28-2318	A-42226-0276				
14	22-28-2147	A-42226-0224	32	22-28-2327	A-42226-0242	14	22-28-2148	A-42226-0259	32	22-28-2328	A-42226-0277				
15	22-28-2157	A-42226-0225	33	22-28-2337	A-42226-0243	15	22-28-2158	A-42226-0260	33	22-28-2338	A-42226-0278				
16	22-28-2167	A-42226-0226	34	22-28-2347	A-42226-0244	16	22-28-2168	A-42226-0261	34	22-28-2348	A-42226-0279				
17	22-28-2177	A-42226-0227	35	22-28-2357	A-42226-0245	17	22-28-2178	A-42226-0262	35	22-28-2358	A-42226-0280				
18	22-28-2187	A-42226-0228	36	22-28-2367	A-42226-0246	18	22-28-2188	A-42226-0263	36	22-28-2368	A-42226-0281				
19	22-28-2197	A-42226-0229				19	22-28-2198	A-42226-0264							
REV: J						TITLE: .100 POLARIZING BREAKAWAY HEADER ASSY.						SHEET No. - 5 -			
DOCUMENT NUMBER: SD- 42226 -001				CREATED / REVISED BY: S. LINEHAN 03/04/2004				CHECKED BY: K.SAMIEC 03/04/2003				APPROVED BY: Y. MARGULIS 03/04/2004			
TEMPLATE FILENAME: PRODUCT_SPEC(SIZE_A)(V.1).DOC															

A-42226-0283/0316						A-42226-0318/0351					
HEADER NUMBER:			41410			HEADER NUMBER:			41410		
PIN NUMBER:			42663-CCB228			PIN NUMBER:			42663-CFA154		
PIN LENGTH: L			.670/17.02			PIN LENGTH: L			.685/17.40		
MATING LENGTH: M			.295/7.49			MATING LENGTH: M			.295/7.49		
GOLD POINT: G			.140/3.56			GOLD POINT: G			N/A		
PC TAIL LENGTH: P			.120/3.05			PC TAIL LENGTH: P			.135/3.43		
TIN: T			.135/3.43			TIN: T			OVERALL		
DIMENSION Y			.022/0.56			DIMENSION Y			.022/0.56		
CKTS:			3-36			CKTS:			3-36		
KINKS:			NO			KINKS:			YES		
REMOVED BACKWALLS:			YES			REMOVED BACKWALLS:			YES		
VOIDED CKTS:			NONE			VOIDED CKTS:			NONE		
PACKAGING:			BULK 40873-0056			PACKAGING:			BULK 40873-0056		
CKTS	MATERIAL NUMBER	ENG NUMBER	CKTS	MATERIAL NUMBER	ENG NUMBER	CKTS	MATERIAL NUMBER	ENG NUMBER	CKTS	MATERIAL NUMBER	ENG NUMBER
02			20	22-28-2209	A-42226-0300	02			20	22-31-4200	A-42226-0335
03	22-28-2039	A-42226-0283	21	22-28-2219	A-42226-0301	03	22-31-4030	A-42226-0318	21	22-31-4210	A-42226-0336
04	22-28-2049	A-42226-0284	22	22-28-2229	A-42226-0302	04	22-31-4040	A-42226-0319	22	22-31-4220	A-42226-0337
05	22-28-2059	A-42226-0285	23	22-28-2239	A-42226-0303	05	22-31-4050	A-42226-0320	23	22-31-4230	A-42226-0338
06	22-28-2069	A-42226-0286	24	22-28-2249	A-42226-0304	06	22-31-4060	A-42226-0321	24	22-31-4240	A-42226-0339
07	22-28-2079	A-42226-0287	25	22-28-2259	A-42226-0305	07	22-31-4070	A-42226-0322	25	22-31-4250	A-42226-0340
08	22-28-2089	A-42226-0288	26	22-28-2269	A-42226-0306	08	22-31-4080	A-42226-0323	26	22-31-4260	A-42226-0341
09	22-28-2099	A-42226-0289	27	22-28-2279	A-42226-0307	09	22-31-4090	A-42226-0324	27	22-31-4270	A-42226-0342
10	22-28-2109	A-42226-0290	28	22-28-2289	A-42226-0308	10	22-31-4100	A-42226-0325	28	22-31-4280	A-42226-0343
11	22-28-2119	A-42226-0291	29	22-28-2299	A-42226-0309	11	22-31-4110	A-42226-0326	29	22-31-4200	A-42226-0344
12	22-28-2129	A-42226-0292	30	22-28-2309	A-42226-0310	12	22-31-4120	A-42226-0327	30	22-31-4300	A-42226-0345
13	22-28-2139	A-42226-0293	31	22-28-2319	A-42226-0311	13	22-31-4130	A-42226-0328	31	22-31-4310	A-42226-0346
14	22-28-2149	A-42226-0294	32	22-28-2329	A-42226-0312	14	22-31-4140	A-42226-0329	32	22-31-4320	A-42226-0347
15	22-28-2159	A-42226-0295	33	22-28-2339	A-42226-0313	15	22-31-4150	A-42226-0330	33	22-31-4330	A-42226-0348
16	22-28-2169	A-42226-0296	34	22-28-2349	A-42226-0314	16	22-31-4160	A-42226-0331	34	22-31-4340	A-42226-0349
17	22-28-2179	A-42226-0297	35	22-28-2359	A-42226-0315	17	22-31-4170	A-42226-0332	35	22-31-4350	A-42226-0350
18	22-28-2189	A-42226-0298	36	22-28-2369	A-42226-0316	18	22-31-4180	A-42226-0333	36	22-31-4360	A-42226-0351
19	22-28-2199	A-42226-0299				19	22-31-4190	A-42226-0334			
REV: J						TITLE: .100 POLARIZING BREAKAWAY HEADER ASSY.					SHEET No. - 6 -
DOCUMENT NUMBER: SD- 42226 -001				CREATED / REVISED BY: S. LINEHAN 03/04/2004		CHECKED BY: K.SAMIEC 03/04/2003			APPROVED BY: Y. MARGULIS 03/04/2004		
TEMPLATE FILENAME: PRODUCT_SPEC(SIZE_A)(V.1).DOC											

A-42226-0422/0456					
HEADER NUMBER:		41410			
PIN NUMBER:		42663-CFA154			
PIN LENGTH: L		.685/17.40			
MATING LENGTH: M		.295/7.49			
GOLD POINT: G		N/A			
PC TAIL LENGTH: P		.135/3.43			
TIN: T		OVERALL			
DIMENSION Y		.022/0.56			
CKTS:		2-36			
KINKS:		NO			
REMOVED BACKWALLS:		NO			
VOIDED CKTS:		NONE			
PACKAGING:		BULK 40873-0056			
CKTS	MATERIAL NUMBER	ENG NUMBER	CKTS	MATERIAL NUMBER	ENG NUMBER
02	42226-0422	A-42226-0422	20	42226-0440	A-42226-0440
03	42226-0423	A-42226-0423	21	42226-0441	A-42226-0441
04	42226-0424	A-42226-0424	22	42226-0442	A-42226-0442
05	42226-0425	A-42226-0425	23	42226-0443	A-42226-0443
06	42226-0426	A-42226-0426	24	42226-0444	A-42226-0444
07	42226-0427	A-42226-0427	25	42226-0445	A-42226-0445
08	42226-0428	A-42226-0428	26	42226-0446	A-42226-0446
09	42226-0429	A-42226-0429	27	42226-0447	A-42226-0447
10	42226-0430	A-42226-0430	28	42226-0448	A-42226-0448
11	42226-0431	A-42226-0431	29	42226-0449	A-42226-0449
12	42226-0432	A-42226-0432	30	42226-0450	A-42226-0450
13	42226-0433	A-42226-0433	31	42226-0451	A-42226-0451
14	42226-0434	A-42226-0434	32	42226-0452	A-42226-0452
15	42226-0435	A-42226-0435	33	42226-0453	A-42226-0453
16	42226-0436	A-42226-0436	34	42226-0454	A-42226-0454
17	42226-0437	A-42226-0437	35	42226-0455	A-42226-0455
18	42226-0438	A-42226-0438	36	42226-0456	A-42226-0456
19	42226-0439	A-42226-0439			
REV: J		TITLE: .100 POLARIZING BREAKAWAY HEADER ASSY.			SHEET No. - 7 -
DOCUMENT NUMBER: SD- 42226 -001		CREATED / REVISED BY: S. LINEHAN 03/04/2004		CHECKED BY: K.SAMIEC 03/04/2003	APPROVED BY: Y. MARGULIS 03/04/2004
TEMPLATE FILENAME: PRODUCT_SPEC(SIZE_A)(V.1).DOC					