

H21L Series OPTOLOGIC® Optical Interrupter Switch

Features

- Low cost
- 0.035" apertures
- Black plastic opaque housing
- Mounting tabs on housing
- Choice of inverter or buffer output functions
- Choice of open-collector or totem-pole output configuration
- TTL/CMOS compatible output functions

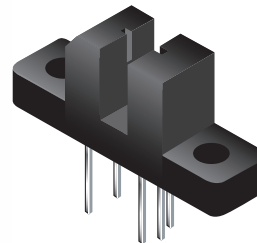
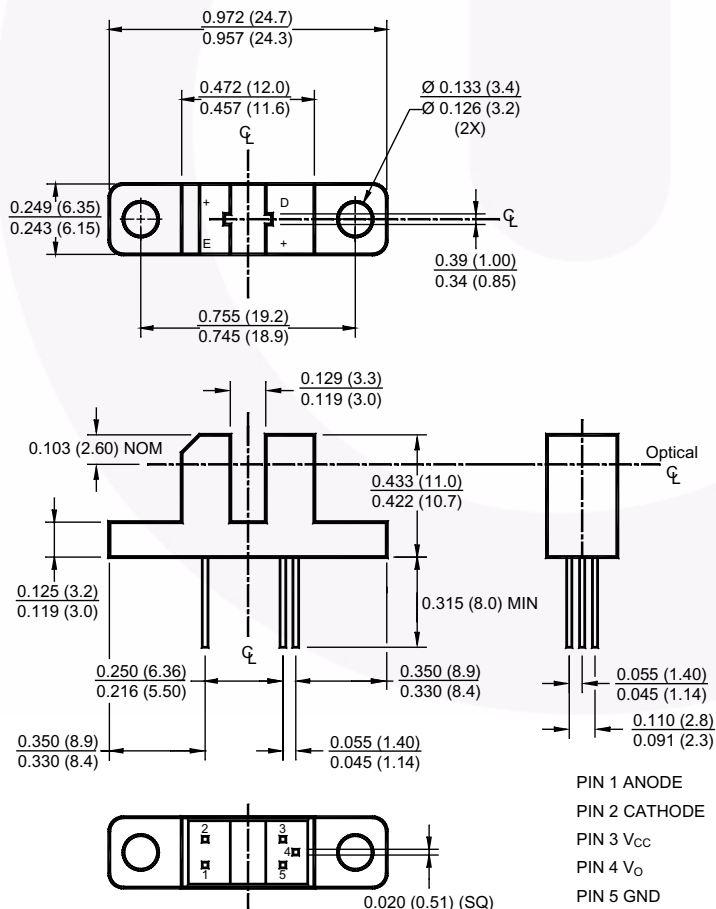
Description

The H21L series are slotted optical switches designed for multipurpose non contact sensing. They consist of a GaAs LED and a silicon OPTOLOGIC® sensor packaged in an injection molded housing and facing each other across a .124" (3.15 mm) gap. The output is either inverting or non-inverting, with a choice of totem-pole or open-collector configuration for TTL/CMOS compatibility.

Part Number Definitions

H21LTB, Totem-pole, buffer output
 H21LTI, Totem-pole, inverter output
 H21LOB, Open-collector, buffer output
 H21LOI, Open-collector, inverter output

Package Dimensions



Notes:

1. Dimensions for all drawings are in inches (mm).
2. Tolerance of $\pm .010$ (.25) on all non-nominal dimensions unless otherwise specified.

Absolute Maximum Ratings ($T_A = 25^\circ\text{C}$ Unless otherwise specified)

Stresses exceeding the absolute maximum ratings may damage the device. The device may not function or be operable above the recommended operating conditions and stressing the parts to these levels is not recommended. In addition, extended exposure to stresses above the recommended operating conditions may affect device reliability. The absolute maximum ratings are stress ratings only.

Symbol	Parameter	Rating	Units
T_{OPR}	Operating Temperature	-40 to +85	$^\circ\text{C}$
T_{STG}	Storage Temperature	-40 to +85	$^\circ\text{C}$
T_{SOL-I}	Soldering Temperature (Iron) ⁽⁵⁾⁽⁶⁾⁽⁷⁾⁽⁸⁾	240 for 5 sec	$^\circ\text{C}$
T_{SOL-F}	Soldering Temperature (Flow) ⁽⁵⁾⁽⁶⁾⁽⁸⁾	260 for 10 sec	$^\circ\text{C}$
INPUT (Emitter)			
I_F	Continuous Forward Current	50	mA
V_R	Reverse Voltage	6	V
P_D	Power Dissipation ⁽³⁾	100	mW
OUTPUT (Sensor)			
I_O	Output Current	50	mA
V_{CC}	Supply Voltage	4.0 to 16	V
V_O	Output Voltage	30	V
P_D	Power Dissipation ⁽⁴⁾	150	mW

Notes:

3. Derate power dissipation linearly 1.67mW/ $^\circ\text{C}$ above 25 $^\circ\text{C}$.
4. Derate power dissipation linearly 2.50mW/ $^\circ\text{C}$ above 25 $^\circ\text{C}$.
5. RMA flux is recommended.
6. Methanol or isopropyl alcohols are recommended as cleaning agents.
7. Soldering iron 1/16" (1.6mm) from housing.
8. As long as leads are not under any stress or spring tension.

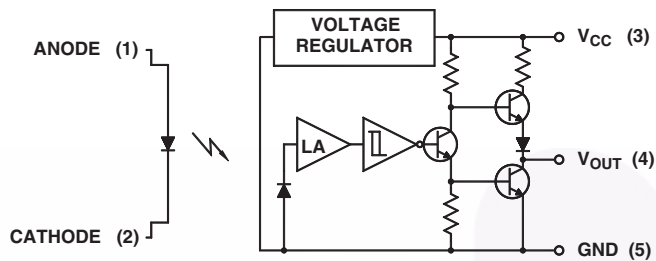
Electrical/Optical Characteristics ($T_A = 25^\circ\text{C}$)

Symbol	Parameter	Test Conditions	Min.	Typ	Max.	Units
INPUT (Emitter)						
V_F	Forward Voltage	$I_F = 20\text{mA}$			1.5	V
I_R	Reverse Leakage Current	$V_R = 5\text{V}$			10	μA
OUTPUT (Sensor)						
I_{CC}	Supply Current	$V_{CC} = 5\text{V}$			5	mA
COUPLED						
V_{OL}	Low Level Output Voltage H21LTB, H21LOB	$I_F = 0\text{mA}, V_{CC} = 5\text{V}, I_{OL} = 16\text{mA}$			0.4	V
	Low Level Output Voltage H21LTI, H21LOI	$I_F = 15\text{mA}, V_{CC} = 5\text{V}, I_{OL} = 16\text{mA}$			0.4	
V_{OH}	High Level Output Voltage H21LTB	$I_F = 15\text{mA}, V_{CC} = 5\text{V}, I_{OH} = -1\text{mA}$	2.4			V
	High Level Output Voltage H21LTI	$I_F = 0\text{mA}, V_{CC} = 5\text{V}, I_{OH} = -1\text{mA}$	2.4			
I_{OH}	High Level Output Current H21LOB	$I_F = 15\text{mA}, V_{CC} = 5\text{V}, V_{OH} = 30\text{V}$			100	μA
	High Level Output Current H21LOI	$I_F = 0\text{mA}, V_{CC} = 5\text{V}, V_{OH} = 30\text{V}$			100	
$I_{F(+)}$	Turn on Threshold Current	$V_{CC} = 5\text{V}$			15	mA
$I_{F(-)}$	Turn off Threshold Current	$V_{CC} = 5\text{V}$	0.50			mA
$I_{F(+)} / I_{F(-)}$	Hysteresis Ratio			1.2		
t_{PLH}, t_{PHL}	Propagation Delay, H21LOI, H21LOB	$V_{CC} = 5\text{V}, R_L = 300\Omega$ (Fig. 9)		6		μs
	Propagation Delay, H21LTI, H21LTB	$V_{CC} = 5\text{V}, R_L = 300\Omega$ (Fig. 9)		6		
t_r, t_f	Output Rise and Fall Time, H21LOI, H21LOB	$V_{CC} = 5\text{V}, R_L = 300\Omega$ (Fig. 9)		100		ns
	Output Rise and Fall Time, H21LTI, H21LTB	$V_{CC} = 5\text{V}, R_L = 300\Omega$ (Fig. 9)		70		

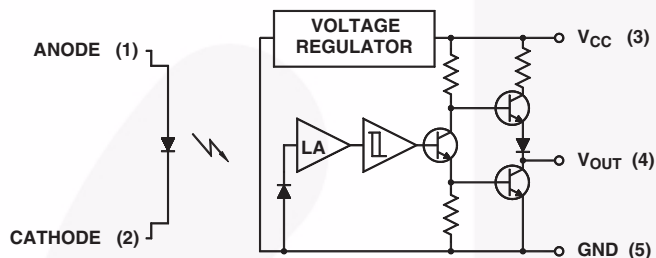
Input/Output Table

Part Number	LED	Output
H21LTB	On	High
H21LTB	Off	Low
H21LTI	On	Low
H21LTI	Off	High
H21LOB	On	High
H21LOB	Off	Low
H21LOI	On	Low
H21LOI	Off	High

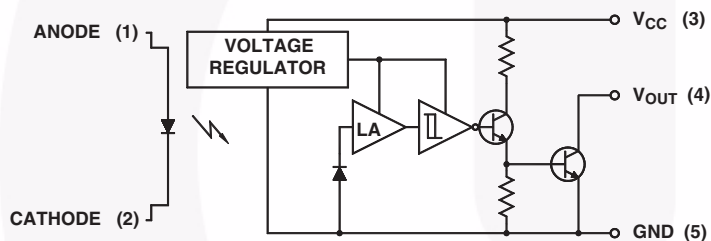
Circuit Schematics



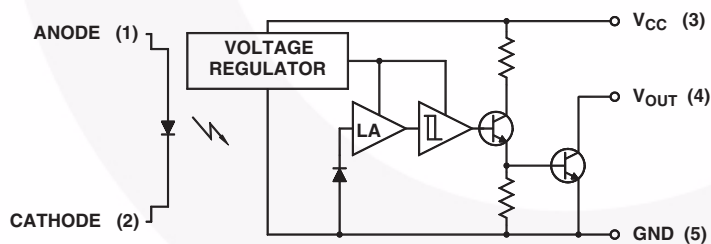
H21LTB
Totem-Pole Output Buffer



H21LTI
Totem-Pole Output inverter



H21LOB
Open-Collector Output Buffer



H21LOI
Open-Collector Output Inverter

Typical Performance Characteristics

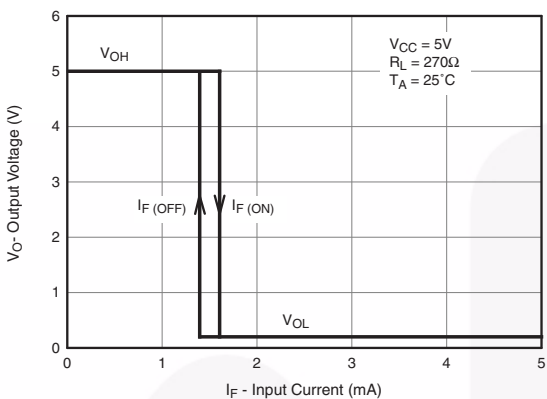


Figure 1. Output Voltage vs. Input Current (Inverters)

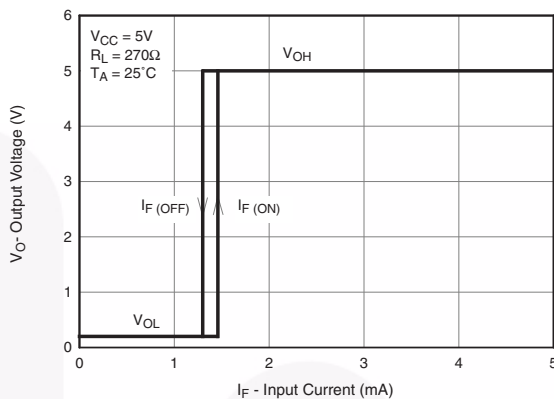


Figure 2. Output Voltage vs. Input Current (Buffers)

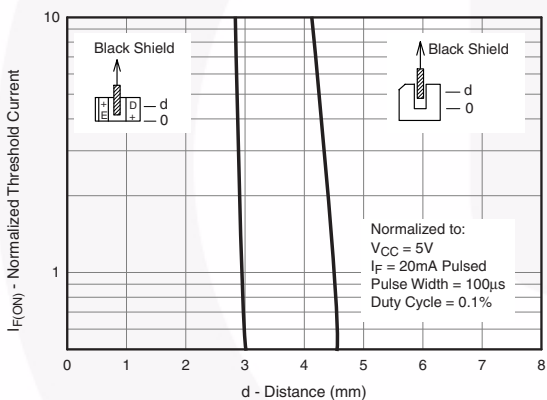


Figure 3. Normalized Threshold Current vs. Shield Distance

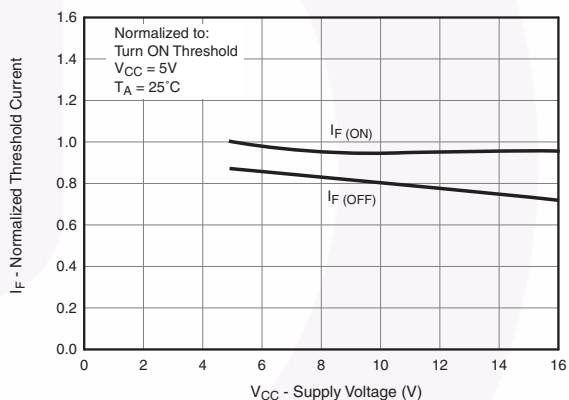


Figure 4. Normalized Threshold Current vs. Supply Voltage

Typical Performance Characteristics (Continued)

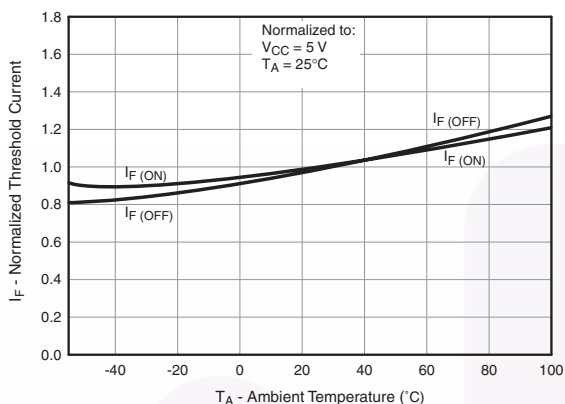


Figure 5. Normalized Threshold Current vs. Ambient Temperature

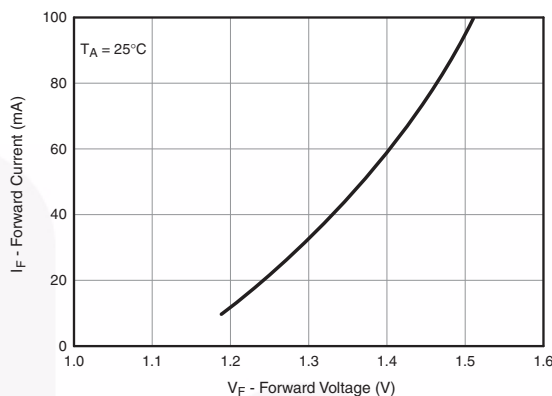


Figure 6. Forward Current vs. Forward Voltage

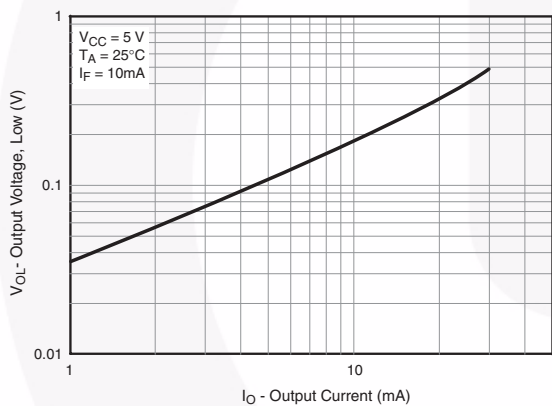


Figure 7. Low Output Voltage vs. Output Current

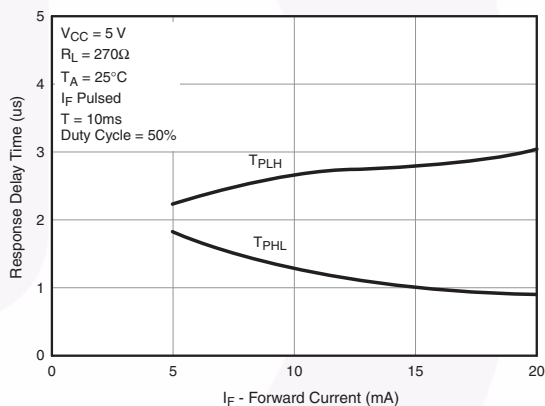


Figure 8. Response Time vs. Forward Current

Figure 9. Switching Speed Test Circuit

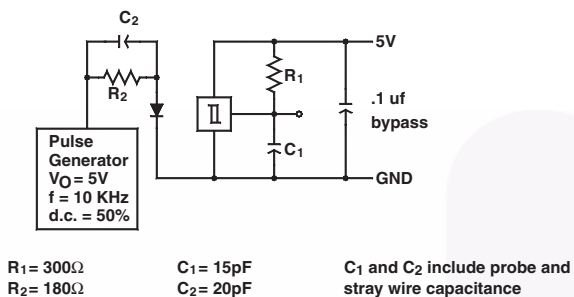


Figure 10. Typical Operating Circuit

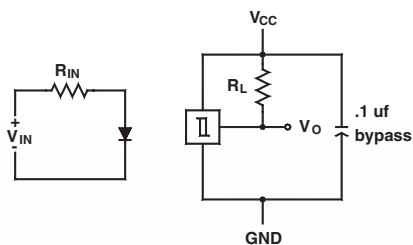


Figure 11. Switching Times Definition for Buffer

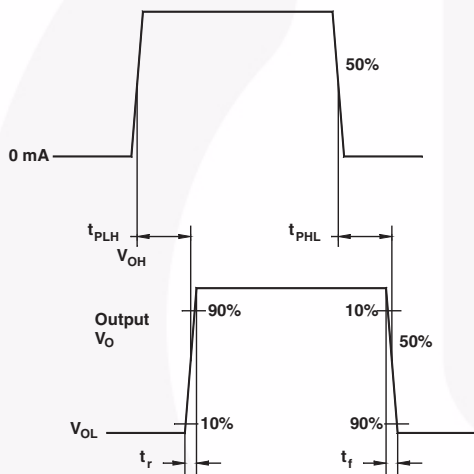
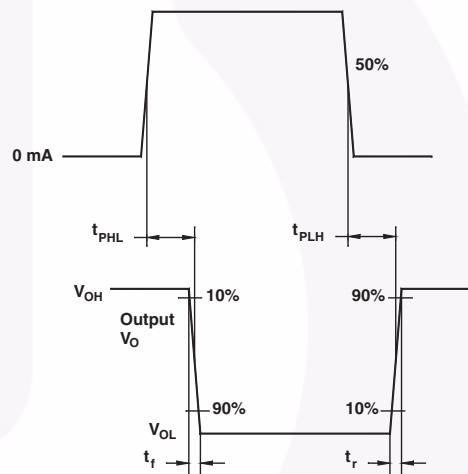




Figure 12. Switching Times Definitions for Inverters





TRADEMARKS

The following includes registered and unregistered trademarks and service marks, owned by Fairchild Semiconductor and/or its global subsidiaries, and is not intended to be an exhaustive list of all such trademarks.

ACEx®	FPS™	PDP-SPM™	SyncFET™
Build it Now™	FRFET®	Power220®	SYSTEM®
CorePLUS™	Global Power Resource™	Power247®	GENERAL®
CROSSVOLT™	Green FPS™	POWEREDGE®	The Power Franchise®
CTL™	Green FPS™ e-Series™	Power-SPM™	the
Current Transfer Logic™	GTO™	PowerTrench®	power™
EcoSPARK®	i-Lo™	Programmable Active Droop™	franchise
EZSWITCH™ *	IntelliMAX™	QFET®	TinyBoost™
 ™	ISOPLANAR™	QS™	TinyBuck™
 ®	MegaBuck™	QT Optoelectronics™	TinyLogic®
Fairchild®	MICROCOUPLER™	Quiet Series™	TINYOPTO™
Fairchild Semiconductor®	MicroFET™	RapidConfigure™	TinyPower™
FACT Quiet Series™	MicroPak™	SMART START™	TinyPWM™
FACT®	MillerDrive™	SPM®	TinyWire™
FAST®	Motion-SPM™	STEALTH™	∞SerDes™
FastvCore™	OPTOLOGIC®	SuperFET™	UHC®
FlashWriter® *	OPTOPLANAR®	SuperSOT™.3	Ultra FRFET™
		SuperSOT™.6	UniFET™
		SuperSOT™.8	VCX™

* EZSWITCH™ and FlashWriter® are trademarks of System General Corporation, used under license by Fairchild Semiconductor.

DISCLAIMER

FAIRCHILD SEMICONDUCTOR RESERVES THE RIGHT TO MAKE CHANGES WITHOUT FURTHER NOTICE TO ANY PRODUCTS HEREIN TO IMPROVE RELIABILITY, FUNCTION, OR DESIGN. FAIRCHILD DOES NOT ASSUME ANY LIABILITY ARISING OUT OF THE APPLICATION OR USE OF ANY PRODUCT OR CIRCUIT DESCRIBED HEREIN; NEITHER DOES IT CONVEY ANY LICENSE UNDER ITS PATENT RIGHTS, NOR THE RIGHTS OF OTHERS. THESE SPECIFICATIONS DO NOT EXPAND THE TERMS OF FAIRCHILD'S WORLDWIDE TERMS AND CONDITIONS, SPECIFICALLY THE WARRANTY THEREIN, WHICH COVERS THESE PRODUCTS.

LIFE SUPPORT POLICY

FAIRCHILD'S PRODUCTS ARE NOT AUTHORIZED FOR USE AS CRITICAL COMPONENTS IN LIFE SUPPORT DEVICES OR SYSTEMS WITHOUT THE EXPRESS WRITTEN APPROVAL OF FAIRCHILD SEMICONDUCTOR CORPORATION.

As used herein:

1. Life support devices or systems are devices or systems which, (a) are intended for surgical implant into the body or (b) support or sustain life, and (c) whose failure to perform when properly used in accordance with instructions for use provided in the labeling, can be reasonably expected to result in a significant injury of the user.
2. A critical component in any component of a life support, device, or system whose failure to perform can be reasonably expected to cause the failure of the life support device or system, or to affect its safety or effectiveness.

PRODUCT STATUS DEFINITIONS

Definition of Terms

Datasheet Identification	Product Status	Definition
Advance Information	Formative or In Design	This datasheet contains the design specifications for product development. Specifications may change in any manner without notice.
Preliminary	First Production	This datasheet contains preliminary data; supplementary data will be published at a later date. Fairchild Semiconductor reserves the right to make changes at any time without notice to improve design.
No Identification Needed	Full Production	This datasheet contains final specifications. Fairchild Semiconductor reserves the right to make changes at any time without notice to improve the design.
Obsolete	Not In Production	This datasheet contains specifications on a product that has been discontinued by Fairchild Semiconductor. The datasheet is printed for reference information only.

Rev. I32