

**PLEASE CHECK WWW.MOLEX.COM FOR LATEST PART INFORMATION**

**Part Number:** [0022433150](#)  
**Status:** **Active**  
**Description:** 2.5 SPOX IDT RECEPTACLE WHITE 15CKT

**Documents:**

[3D Model](#) [Product Specification PS-42219-0001 \(PDF\)](#)  
[Drawing \(PDF\)](#) [RoHS Certificate of Compliance \(PDF\)](#)

**General**

Product Family IDT and Solder Connectors  
 Series 42219  
 Comments Spring Box|Use with 24 AWG solid  
 Crimp Quality Equipment Yes  
 Product Name SPOX™

**Physical**

Circuits (Loaded) 15  
 Color - Resin Natural  
 Durability (mating cycles max) 25  
 Gender Female  
 Glow-Wire Compliant No  
 Lock to Mating Part None  
 Material - Metal Phosphor Bronze  
 Material - Plating Mating Tin  
 Material - Plating Termination Tin  
 Material - Resin Polyester  
 Number of Rows 1  
 Packaging Type Bag  
 Panel Mount No  
 Pitch - Mating Interface (in) 0.098 In  
 Pitch - Mating Interface (mm) 2.50 mm  
 Plating min: Mating (µin) 100  
 Plating min: Mating (µm) 2.50  
 Plating min: Termination (µin) 100  
 Plating min: Termination (µm) 2.50  
 Stackable No  
 Temperature Range - Operating 0°C to +75°C  
 Termination Interface: Style IDT or Pierce  
 Wire Size AWG 24, 26

**Electrical**

Current - Maximum per Contact 3A  
 Voltage - Maximum 250V

**Material Info**

Old Part Number A-42219-15A

**Reference - Drawing Numbers**

Product Specification PS-42219-0001  
 Sales Drawing SDA-42219-\*

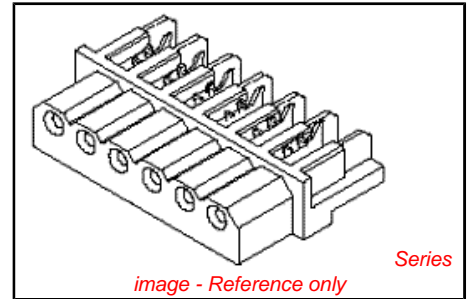


image - Reference only

**EU RoHS**

**ELV and RoHS Compliant**  
**REACH SVHC Contains SVHC: No**  
**Halogen-Free Status Not Reviewed**

**China RoHS**



**Need more information on product environmental compliance?**

Email [productcompliance@molex.com](mailto:productcompliance@molex.com)  
 For a multiple part number RoHS Certificate of Compliance, [click here](#)

Please visit the [Contact Us](#) section for any non-product compliance questions.

**Search Parts in this Series**

[42219Series](#)

**Mates With**

Headers, [5267](#) , [42249](#) , [42267](#) , [5268](#)

**Application Tooling | FAQ**

*Tooling specifications and manuals are found by selecting the products below. Crimp Height Specifications are then contained in the Application Tooling Specification document.*

**Global**

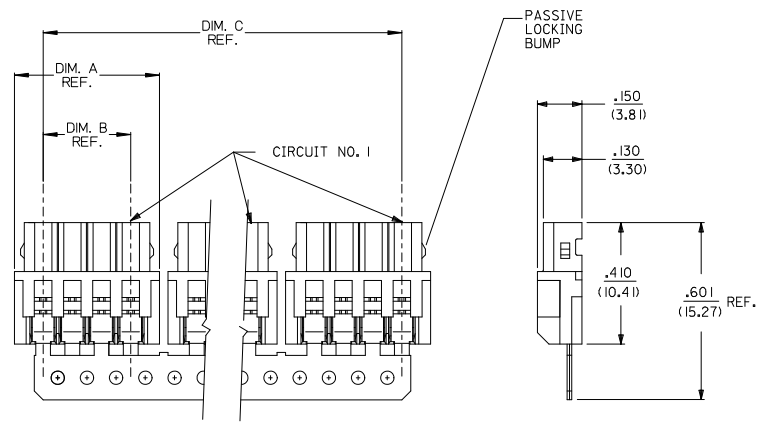
Description	Product #
IDT - Manual Press	<a href="#">0011219757</a>
Hawk™ Discrete	<a href="#">0623000500</a>
Wire Terminator Machine 2.5mm	
Hawk™ Discrete	<a href="#">0623000700</a>
Wire Terminator Machine 2.5mm	
Changehead for Parallel	<a href="#">0690080290</a>
Action Handtool	

69008-0949 for  
2.5mm User Friendly

This document was generated on 06/08/2010

**PLEASE CHECK [WWW.MOLEX.COM](http://WWW.MOLEX.COM) FOR LATEST PART INFORMATION**

DISCRETE CONN. CKT SIZE	NO OF CONN. IN CHAIN	DIM. A	DIM. B	DIM. C	PASSIVE LOCKING BUMPS
2	10	.292 (7.42)	.098 (2.50)	2.756 (70.00)	YES
3	8	.390 (9.92)	.197 (5.00)	2.953 (75.00)	YES
4	6	.489 (12.42)	.295 (7.50)	2.756 (70.00)	YES
5	5	.587 (14.92)	.394 (10.00)	2.756 (70.00)	YES
6	4	.685 (17.40)	.492 (12.50)	2.556 (65.00)	YES
7	4	.783 (19.90)	.591 (15.00)	2.952 (75.00)	YES
8	3	.882 (22.40)	.689 (17.50)	2.461 (62.50)	YES
9	3	.980 (24.90)	.787 (20.00)	2.756 (70.00)	NO
10	2	1.079 (27.40)	.886 (22.50)	1.969 (50.00)	NO
11	2	1.177 (29.90)	.984 (25.00)	2.165 (55.00)	NO
12	2	1.276 (32.40)	1.082 (27.50)	2.362 (60.00)	NO
13	2	1.374 (34.90)	1.181 (30.00)	2.559 (65.00)	NO
14	2	1.472 (37.40)	1.279 (32.50)	2.756 (70.00)	NO
15	2	1.571 (39.90)	1.378 (35.00)	2.952 (75.00)	NO



NOTES:

- MATERIAL:  
HOUSING: POLYESTER, 7.5% GLASS FILLED, 94V-0  
TERMINAL: PHOS. BRONZE
- FINISH:  
(P909) \*OVERALL HOT TIN DIP: .000100/0.00254 MIN.  
\*THE PRIMARY SHIPPING CARTON WILL BE LABELED "COMPLIANT TO RoHS DIRECTIVE 2002/95/EC AND ELV ANNEX II OF DIRECTIVE 2000/53/EC". CARTONS WITHOUT THIS LABEL MAY CONTAIN PRODUCT WITH TIN/LEAD PLATINGS.
- FOR PRODUCT SPEC'S SEE PS-42219-0001
- PACKAGING SPECIFICATION: SEE LENGEND
- THE WIRE TERMINATION SPEC IS SMES-42219-0002.
- THIS PART CONFORMS TO CLASS B REQUIREMENTS OF COSMETIC SPECIFICATION PS-45499-002.

42219-N\*\*\*  
NO OF CKTS  
HOUSING COLOR  
PACKAGING SPEC.  
BLANK= PK-70873-0140 (LARGE BOX)  
I= PK-40873-0061 (SMALL BOX)  
TERMINAL  
BLANK=42218

A= (NATURAL)  
B= (BLUE)  
C= (BROWN)  
D= (RED)  
E= (ORANGE)  
F= (YELLOW)  
G= (GREEN)  
H= (GRAY)

3	J1
2	J1
1	J1

UPDATE NOTES EC NO: UGP2007-1815 DRAWN BY: DIER 2007/01/26 CHECKED BY: 2007/01/30 APPROVED BY: 2007/02/01	QUALITY SYMBOLS ▽=0 ▽=0	GENERAL TOLERANCES (UNLESS SPECIFIED)		DIMENSION STYLE IN/MM		SCALE 4:1	DESIGN UNITS METRIC	THIRD ANGLE PROJECTION		
		4 PLACES ± --- ± ---	3 PLACES ± --- ± .010	2 PLACES ± 0.25 ± .014	1 PLACE ± 0.36 ± ---	mm	INCH	DRAWN BY AG DATE 1989/02/06	TITLE 2.5MM I.D.T. CONNECTOR ASSEMBLY	
		ANGULAR ±1/2°				DRAWN BY AG DATE 1989/02/06		CHECKED BY RE DATE 1989/02/06	APPROVED BY WRL DATE 1989/02/06	
		DRAFT WHERE APPLICABLE MUST REMAIN WITHIN DIMENSIONS		SEE CHART		MATERIAL NO. SDA-42219-x		DOCUMENT NO. MOLEX INCORPORATED		SHEET NO. 1 OF 3
THIS DRAWING CONTAINS INFORMATION THAT IS PROPRIETARY TO MOLEX INCORPORATED AND SHOULD NOT BE USED WITHOUT WRITTEN PERMISSION										

13		12		11		10		9		8		7		6		5		4		3		2		1	
A-422 19-NA				A-422 19-NA-R				A-422 19-NB				A-422 19-NC				A-422 19-ND				A-422 19-NE					
PART NO.	ENG. NO.	PART NO.	ENG. NO.	PART NO.	ENG. NO.	PART NO.	ENG. NO.	PART NO.	ENG. NO.	PART NO.	ENG. NO.	PART NO.	ENG. NO.	PART NO.	ENG. NO.	PART NO.	ENG. NO.	PART NO.	ENG. NO.	PART NO.	ENG. NO.	PART NO.	ENG. NO.	PART NO.	ENG. NO.
22-43-3020	A-422 19-2A		A-422 19-2A-R	22-44-6026	A-422 19-2B					A-422 19-2C	22-44-6022	A-422 19-2D	22-44-6024	A-422 19-2E											
22-43-3030	A-422 19-3A		A-422 19-3A-R	22-44-6036	A-422 19-3B					A-422 19-3C	22-44-6032	A-422 19-3D	22-44-6034	A-422 19-3E											
22-43-3040	A-422 19-4A		A-422 19-4A-R	22-44-6046	A-422 19-4B					A-422 19-4C	22-44-6042	A-422 19-4D	22-44-6044	A-422 19-4E											
22-43-3050	A-422 19-5A		A-422 19-5A-R	22-44-6056	A-422 19-5B					A-422 19-5C	22-44-6052	A-422 19-5D	22-44-6054	A-422 19-5E											
22-43-3060	A-422 19-6A		A-422 19-6A-R		A-422 19-6B					A-422 19-6C	22-44-6062	A-422 19-6D	22-44-6064	A-422 19-6E											
22-43-3070	A-422 19-7A		A-422 19-7A-R		A-422 19-7B					A-422 19-7C	22-44-6072	A-422 19-7D	22-44-6074	A-422 19-7E											
22-43-3080	A-422 19-8A		A-422 19-8A-R		A-422 19-8B					A-422 19-8C	22-44-6082	A-422 19-8D	22-44-6084	A-422 19-8E											
22-43-3090	A-422 19-9A		A-422 19-9A-R		A-422 19-9B					A-422 19-9C	22-44-6092	A-422 19-9D	22-44-6094	A-422 19-9E											
22-43-3100	A-422 19-10A		A-422 19-10A-R		A-422 19-10B					A-422 19-10C	22-44-6102	A-422 19-10D	22-44-6104	A-422 19-10E											
22-43-3110	A-422 19-11A		A-422 19-11A-R		A-422 19-11B					A-422 19-11C		A-422 19-11D		A-422 19-11E											
22-43-3120	A-422 19-12A		A-422 19-12A-R		A-422 19-12B					A-422 19-12C	22-44-6122	A-422 19-12D		A-422 19-12E											
22-43-3130	A-422 19-13A		A-422 19-13A-R		A-422 19-13B					A-422 19-13C		A-422 19-13D		A-422 19-13E											
22-43-3140	A-422 19-14A		A-422 19-14A-R		A-422 19-14B					A-422 19-14C	22-44-6142	A-422 19-14D		A-422 19-14E											
22-43-3150	A-422 19-15A		A-422 19-15A-R		A-422 19-15B					A-422 19-15C		A-422 19-15D		A-422 19-15E											

A-422 19-NF		A-422 19-NG				A-422 19-NA-I		A-422 19-NH			
PART NO.	ENG. NO.	PART NO.	ENG. NO.	PART NO.	ENG. NO.	PART NO.	ENG. NO.	PART NO.	ENG. NO.	PART NO.	ENG. NO.
22-44-6021	A-422 19-2F	22-44-6023	A-422 19-2G			22-43-3022	A-422 19-2A-I		A-422 19-2H		
22-44-6031	A-422 19-3F	22-44-6033	A-422 19-3G			22-43-3032	A-422 19-3A-I		A-422 19-3H		
22-44-6041	A-422 19-4F	22-44-6043	A-422 19-4G			22-43-3042	A-422 19-4A-I		A-422 19-4H		
22-44-6051	A-422 19-5F	22-44-6053	A-422 19-5G			22-43-3052	A-422 19-5A-I		A-422 19-5H		
22-44-6061	A-422 19-6F	22-44-6063	A-422 19-6G			22-43-3062	A-422 19-6A-I		A-422 19-6H		
22-44-6071	A-422 19-7F	22-44-6073	A-422 19-7G			22-43-3072	A-422 19-7A-I		A-422 19-7H		
	A-422 19-8F	22-44-6083	A-422 19-8G			22-43-3082	A-422 19-8A-I		A-422 19-8H		
22-44-6091	A-422 19-9F	22-44-6093	A-422 19-9G			22-43-3092	A-422 19-9A-I		A-422 19-9H		
22-44-6101	A-422 19-10F	22-44-6103	A-422 19-10G			22-43-3102	A-422 19-10A-I		A-422 19-10H		
	A-422 19-11F	22-44-6113	A-422 19-11G			22-43-3112	A-422 19-11A-I		A-422 19-11H		
	A-422 19-12F	22-44-6123	A-422 19-12G			22-43-3122	A-422 19-12A-I		A-422 19-12H		
	A-422 19-13F	22-44-6133	A-422 19-13G			22-43-3132	A-422 19-13A-I		A-422 19-13H		
	A-422 19-14F	22-44-6143	A-422 19-14G			22-43-3142	A-422 19-14A-I		A-422 19-14H		
	A-422 19-15F	22-44-6153	A-422 19-15G			22-43-3152	A-422 19-15A-I		A-422 19-15H		

ADD 22-44-6122/6142 EC NO. LCP2007-1815 2007/04/26 DRAWN BY: DIER 2007/04/26 CHECKED BY: APPR:PS/TH 2007/02/01 REV:	QUALITY SYMBOLS 	GENERAL TOLERANCES (UNLESS SPECIFIED) <table border="1"> <tr> <th></th> <th>mm</th> <th>INCH</th> </tr> <tr> <td>4 PLACES</td> <td>± 0.10</td> <td>± 0.004</td> </tr> <tr> <td>3 PLACES</td> <td>± 0.15</td> <td>± 0.006</td> </tr> <tr> <td>2 PLACES</td> <td>± 0.20</td> <td>± 0.008</td> </tr> <tr> <td>1 PLACE</td> <td>± 0.30</td> <td>± 0.012</td> </tr> </table>		mm	INCH	4 PLACES	± 0.10	± 0.004	3 PLACES	± 0.15	± 0.006	2 PLACES	± 0.20	± 0.008	1 PLACE	± 0.30	± 0.012	DIMENSION STYLE IN/MM SCALE --- DESIGN UNITS METRIC THIRD ANGLE PROJECTION	DRAWN BY: SCHMIDGALL DATE: 1991/05/17 CHECKED BY: EDGLEY DATE: 1991/05/17 APPROVED BY: LENZ DATE: 1991/05/17	TITLE: 2.5 MM I.D. CONNECTOR ASSEMBLY MOLEX INCORPORATED MATERIAL NO.: SEE CHART DOCUMENT NO.: SDA-42219-* SHEET NO.: 2 OF 3
		mm	INCH																	
4 PLACES	± 0.10	± 0.004																		
3 PLACES	± 0.15	± 0.006																		
2 PLACES	± 0.20	± 0.008																		
1 PLACE	± 0.30	± 0.012																		
DRAFT WHERE APPLICABLE MUST REMAIN WITHIN DIMENSIONS		THIS DRAWING CONTAINS INFORMATION THAT IS PROPRIETARY TO MOLEX INCORPORATED AND SHOULD NOT BE USED WITHOUT WRITTEN PERMISSION																		