



TAI-SAW TECHNOLOGY CO., LTD.

No. 3, Industrial 2nd Rd., Ping-Chen Industrial District,
Taoyuan, 324, Taiwan, R.O.C.

TEL: 886-3-4690038 FAX: 886-3-4697532

E-mail: tstsales@mail.taisaw.com Web: www.taisaw.com

Approval Sheet For Product Specification

Issued Date:

Product Name: SAW Filter 350MHz SMD 5.0x5.0mm

TST Parts No.: TB0706A

Customer Parts No.: _____

Company: _____
Division: _____
Approved by : _____
Date: _____

Checked by: Andy Yu *Andy Yu*

Approval by: Francis Chen *(Signature)*

Date: 2008/11/14



TAI-SAW TECHNOLOGY CO., LTD.

No. 3, Industrial 2nd Rd., Ping-Chen Industrial District,
Taoyuan, 324, Taiwan, R.O.C.

TEL: 886-3-4690038 FAX: 886-3-4697532

E-mail: tstsales@mail.taisaw.com Web: www.taisaw.com

SAW Filter 350 MHz SMD 5.0mmX5.0mm

MODEL NO.: TB0706A

preliminary

A. MAXIMUM RATING:

1. Operating Temperature: -25°C to +70°C
2. Storage Temperature: -40°C to +85°C
3. Maximum Input Power : 10dBm

RoHS Compliant
Lead free
Lead-free soldering

B. ELECTRICAL CHARACTERISTICS:

1. Ambient Temperature: 25 °

Item		Min.	Typical	Max.
Center frequency	Fc MHz	-	350	-
Insertion loss at Fc	dB	-	14.6	18
Bandwidth at -1.5dB	MHz	31.0	35.1	-
Bandwidth at -6.0dB	MHz	-	41.4	43.0
Bandwidth at -25.0dB	MhZ		48.0	50.0
Amplitude Ripple (Fc ± 15.0 MHz)	dB	-	1.1	1.4
Group Delay Ripple (Fc ± 15.0 MHz)	nS	-	30	100
Absolute Group delay at Fc	nS	-	320	-
Temp Coefficient	ppm/°C	-	-18	-

C. FREQUENCY CHARACTERISTICS :

1.S21 wide-band Response:(span 400MHz)

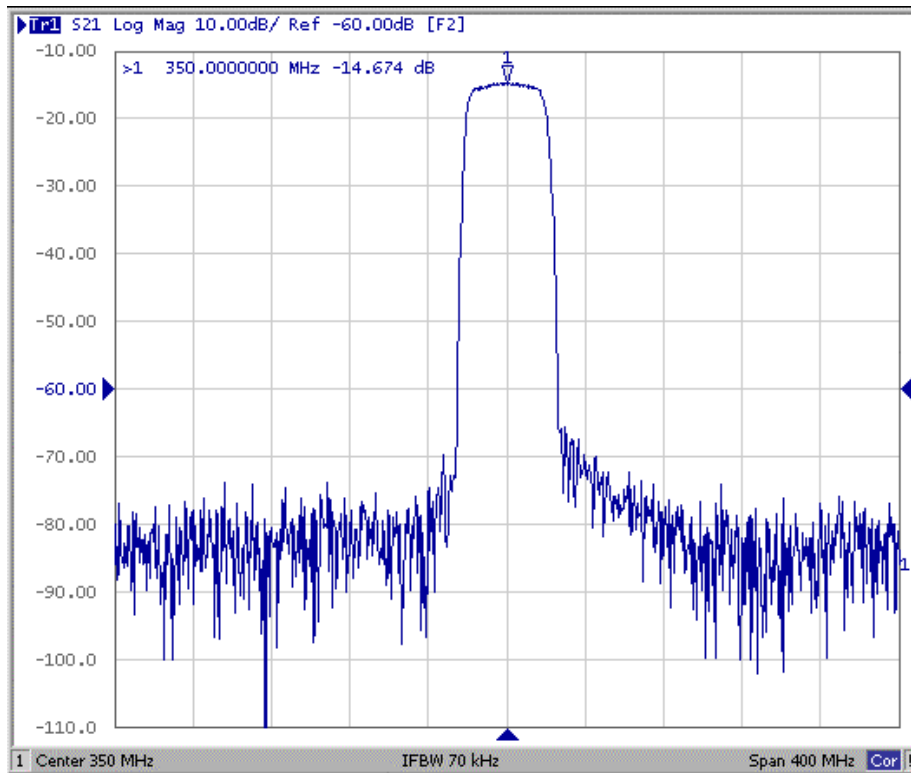


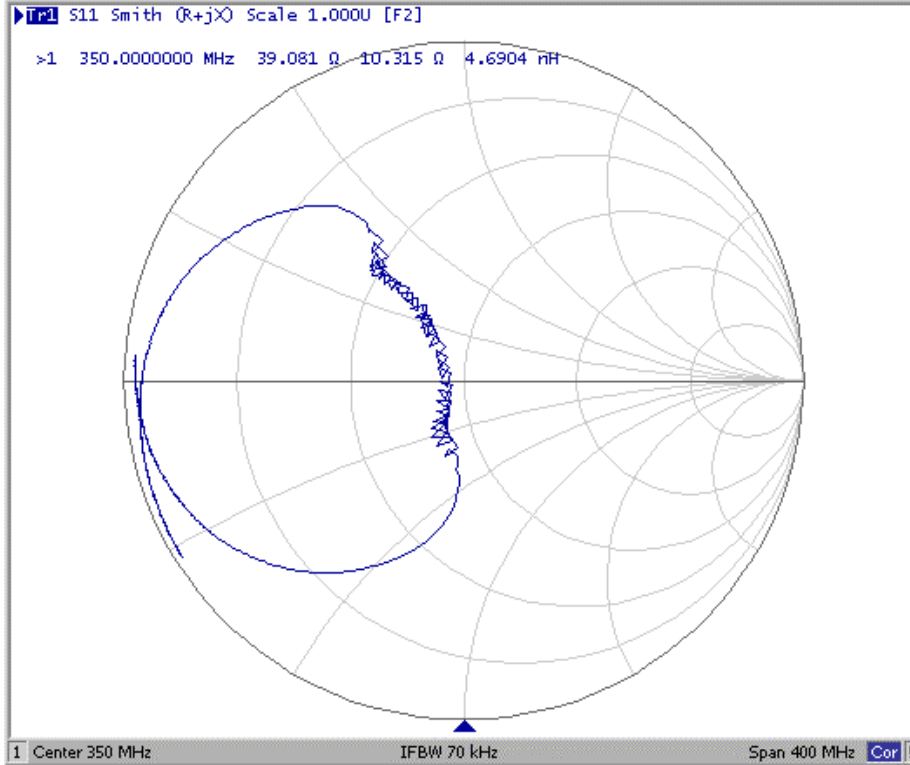
Fig1. Horizontal: 40MHz/Div Vertical: 10dB/Div

2.S21 pass-band Response:(span 60MHz)

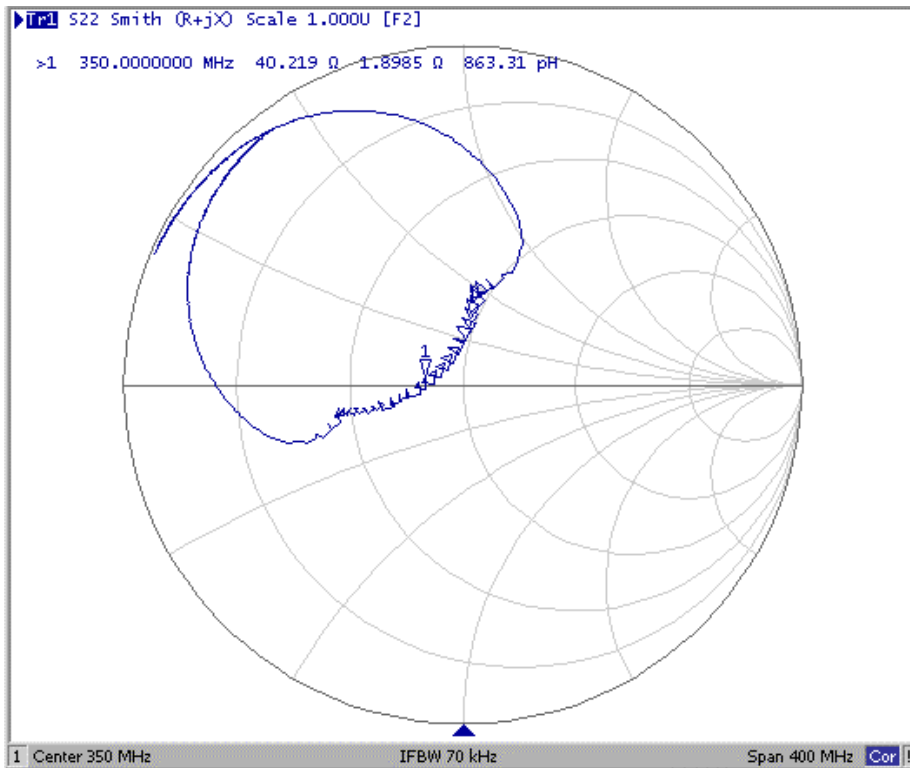


Fig2. Horizontal: 6MHz/Div Vertical: 1dB/Div

3.S11 Smith-Chart: (span 400MHz)

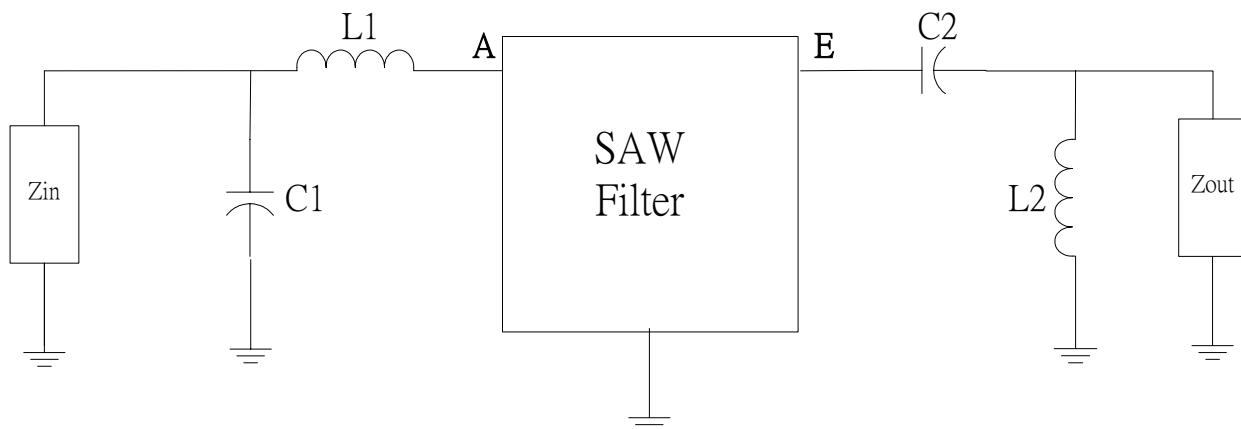


4.S22 Smith-Chart:(span 400MHz)



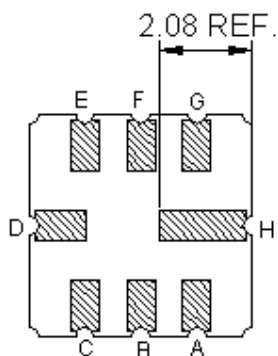
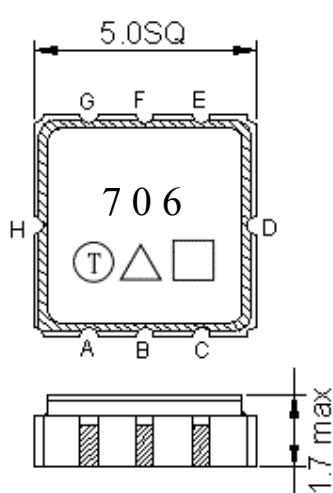
D. MEASUREMENT CIRCUIT

1. Single ended input 50 ohm to Single ended Output 50 ohm



$C1=30\text{pF}$, $L1=6.8\text{nH}$, $C2=10\text{pF}$, $L2=5.6\text{nH}$

E. OUTLINE DRAWING:



Pin A : RF Input
 Pin E : RF Output
 Pin B,C,D,F,G,H : Ground

Unit: mm

□ : Week Code (Follow the table from planner each year)

△ : Product / Year Code

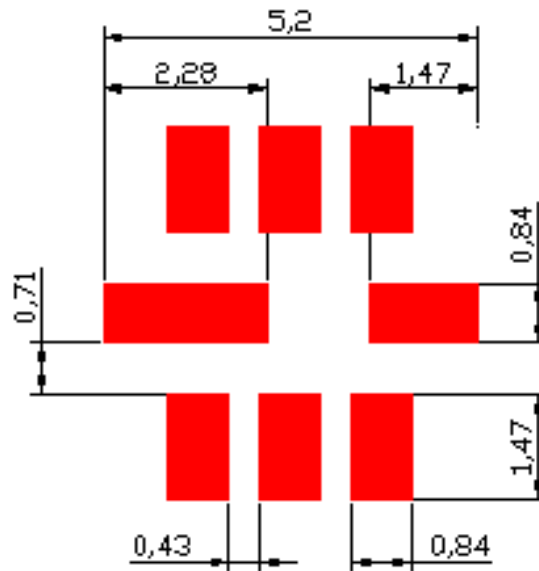
Year	2005 2009	2006 2010	2007 2011	2008 2012
------	--------------	--------------	--------------	--------------

TAI-SAW TECHNOLOGY CO., LTD.

TST DCC
 Release document

Product Code	B	b	<u>B</u>	<u>b</u>
--------------	---	---	----------	----------

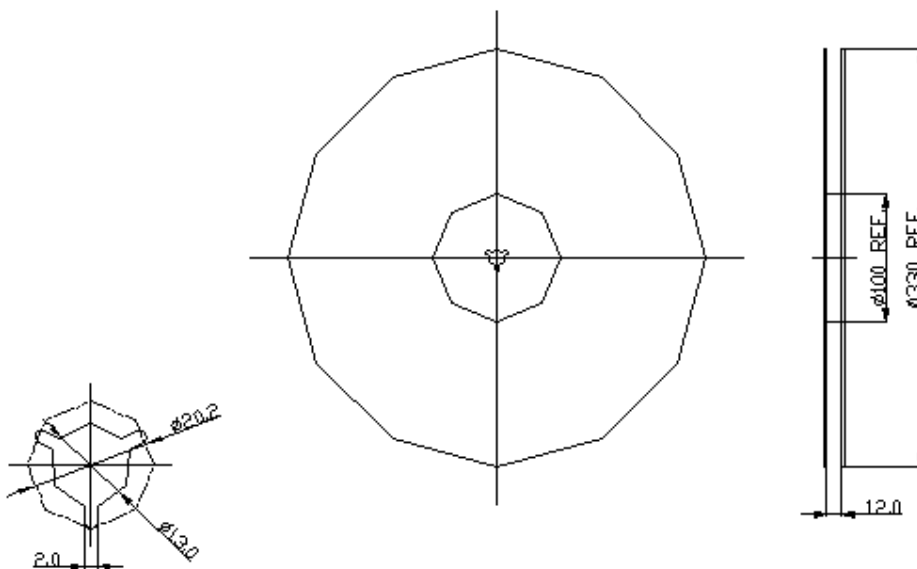
F. PCB Footprint



Unit: mm

G. PACKING:

1. REEL DIMENSION

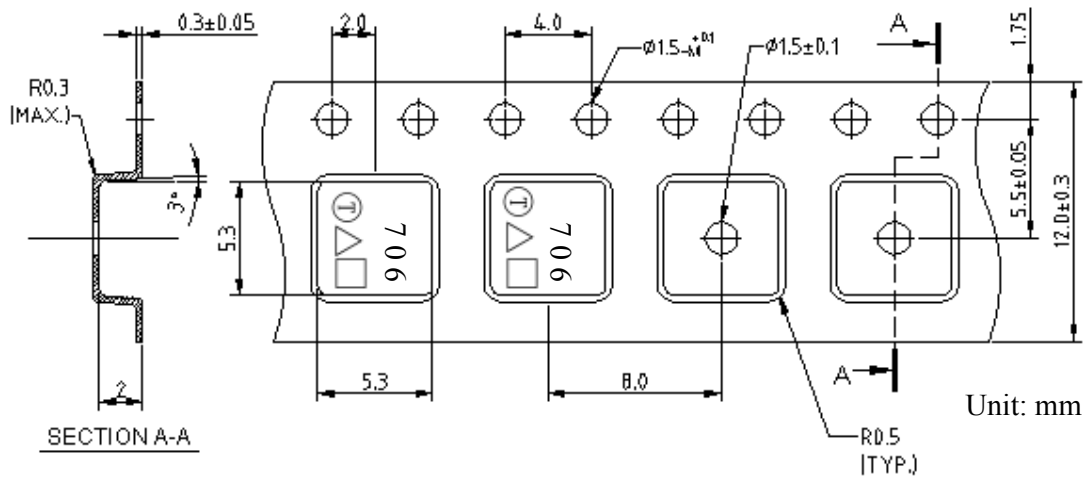


TAI-SAW TECHNOLOGY CO., LTD.

TST DCC
Release document

2. TAPE DIMENSION

Unit: mm



H. RECOMMENDED REFLOW PROFILE:

