



TAI-SAW TECHNOLOGY CO., LTD.

No. 3, Industrial 2nd Rd., Ping-Chen Industrial District,
Taoyuan, 324, Taiwan, R.O.C.

TEL: 886-3-4690038 FAX: 886-3-4697532

E-mail: ttsales@mail.taisaw.com Web: www.taisaw.com

Approval Sheet For Product Specification

Issued Date:

Product Name: SAW Filter 464MHz SMD 7.0x5.0mm

TST Parts No.:TB0575A

Customer Parts No.: _____

Company: _____
Division: _____
Approved by : _____
Date: _____

Checked by: Andy Lee

Approval by: Francis Chen

Date: 2008/1/31



TAI-SAW TECHNOLOGY CO., LTD.

No. 3, Industrial 2nd Rd., Ping-Chen Industrial District,
Taoyuan, 324, Taiwan, R.O.C.

TEL: 886-3-4690038 FAX: 886-3-4697532

E-mail: tstsales@mail.taisaw.com Web: www.taisaw.com

SAW Filter 464 MHz SMD 7.0mmX5.0mm

MODEL NO.: TB0575A

REV. NO. 2

A. MAXIMUM RATING:

1. Operating Temperature: -40°C to +85°C
2. Storage Temperature: -40°C to +85°C
3. Maximum Input Power : 10dBm

RoHS Compliant
Lead free
Lead-free soldering

B. ELECTRICAL CHARACTERISTICS:

1. Ambient Temperature: 25 °C

Item		Min.	Typical	Max.	
Center frequency	Fc	MHz	-	464.0	-
Insertion loss at Fc		dB	-	12.6	13.5
Bandwidth at -1.0dB		MHz	3.40	3.54	-
Bandwidth at -3.0dB		MHz	-	3.93	4.00
Amplitude Ripple (Fc ± 1.7 MHz)		dB	-	0.6	1.0
Group Delay Ripple (Fc ± 1.4 MHz)		nS	-	100	250
Attenuation (Reference level from minimum Insertion loss)					
	DC ~ 264 MHz	dBc	30	62	-
	264 ~ 368 MHz	dBc	50	62	-
	368 ~ 424 MHz	dBc	45	57	-
	424~ 458.6 MHz	dBc	38	41	-
	469.4~ 504 MHz	dBc	37	40	-
	504~ 664 MHz	dBc	40	50	-
	664 ~ 1000 MHz	dBc	30	60	-
Temp Coefficient		ppm/°C ²	-	-0.036	-

D. FREQUENCY CHARACTERISTICS :

1.S21 Response

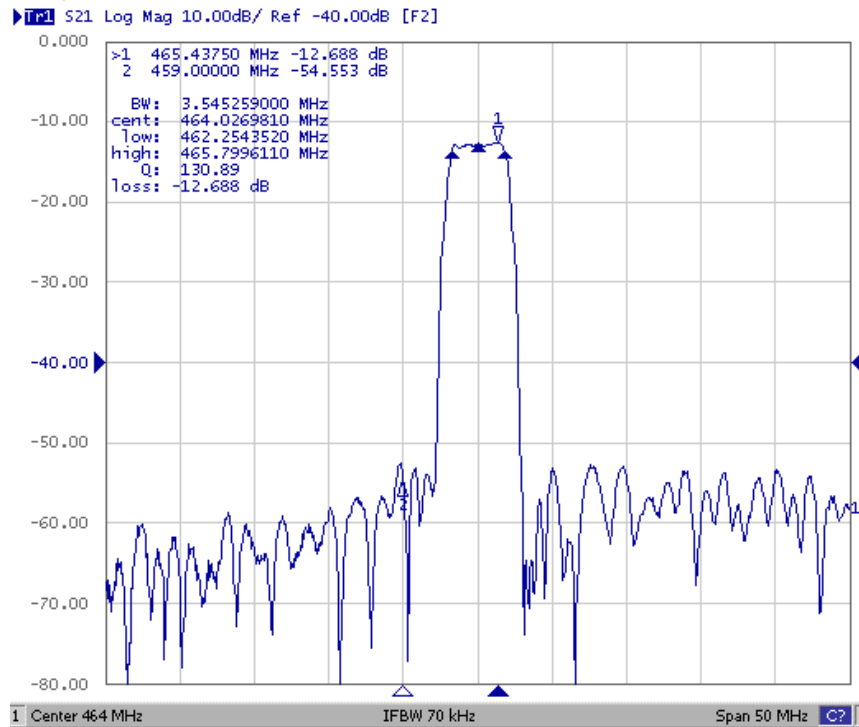


Fig1. Horizontal: 5MHz/Div Vertical: 10dB/Div

2. Passband Ripple

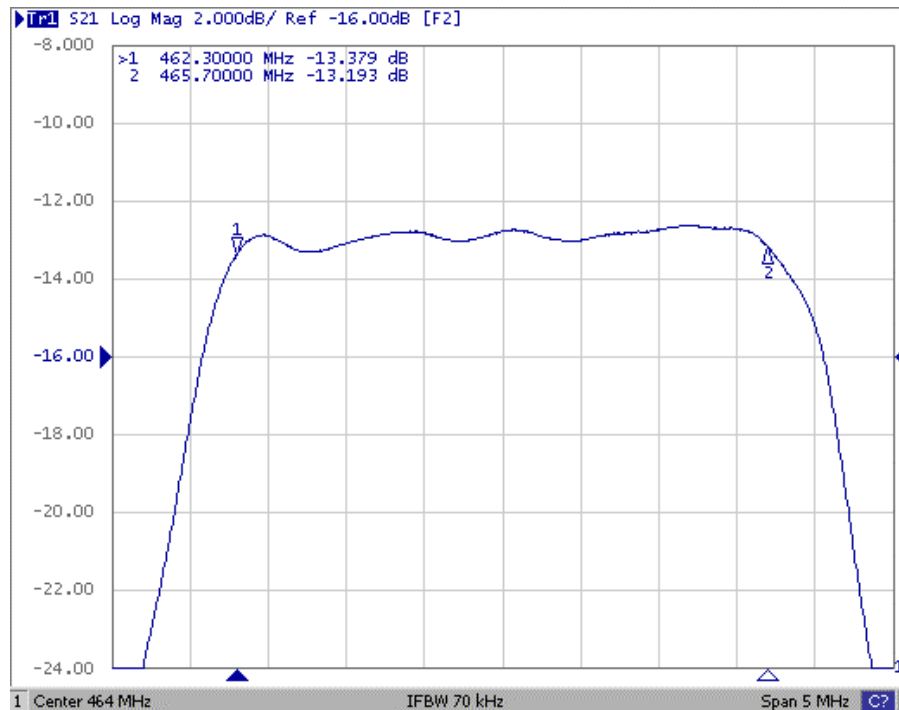


Fig2. Horizontal: 0.5MHz/Div Vertical: 2dB/Div

3. Group Delay Ripple

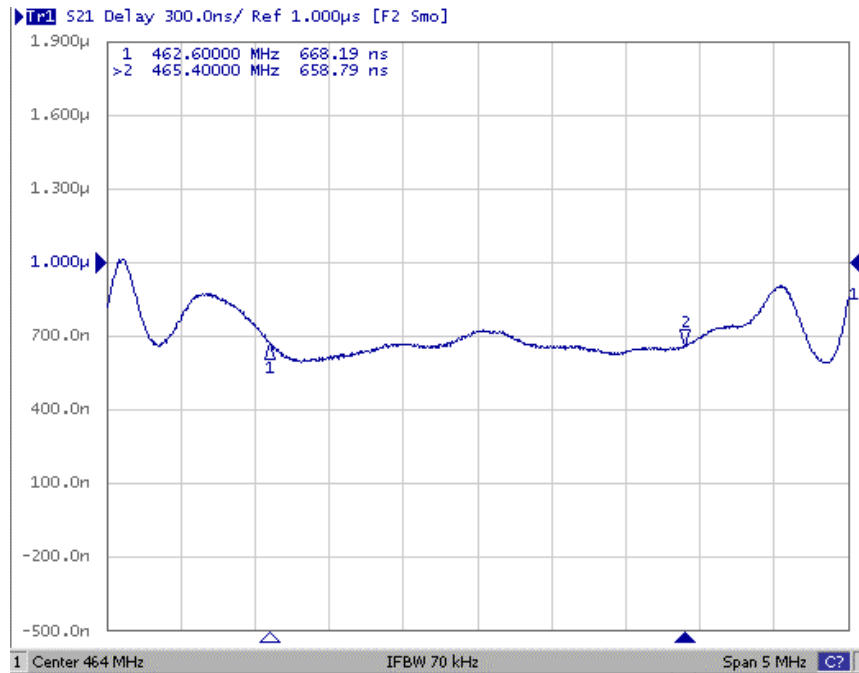


Fig3. Horizontal: 0.5MHz/Div Vertical: 300nS/Div

4. Wide band Response

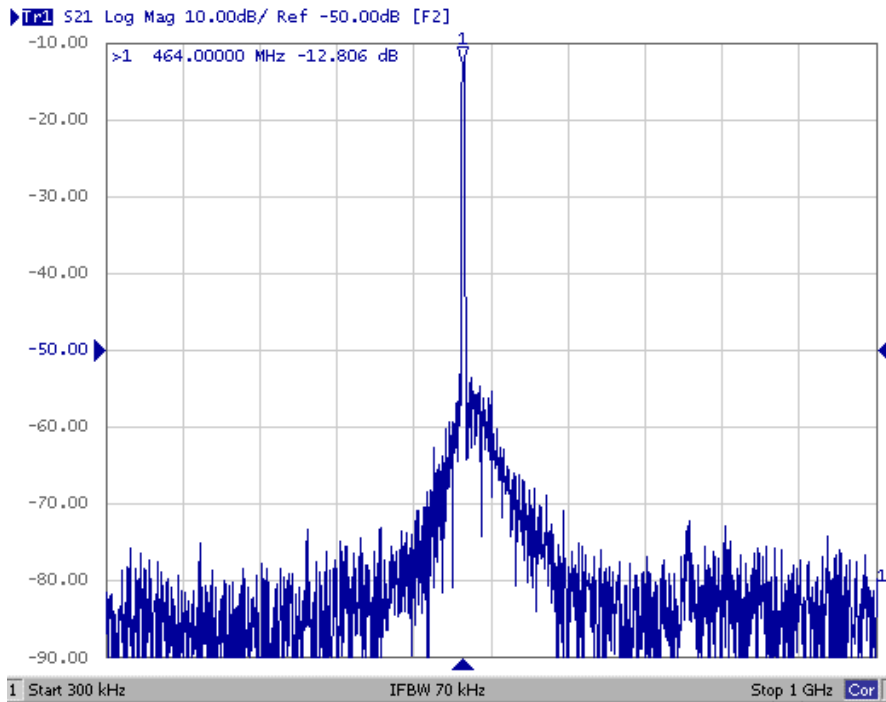
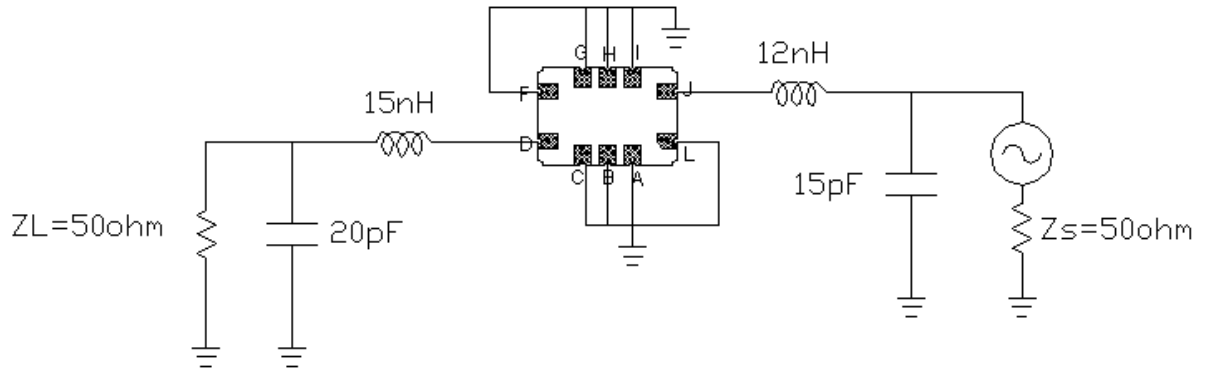


Fig4. Horizontal: 100MHz/Div Vertical: 10dB/Div

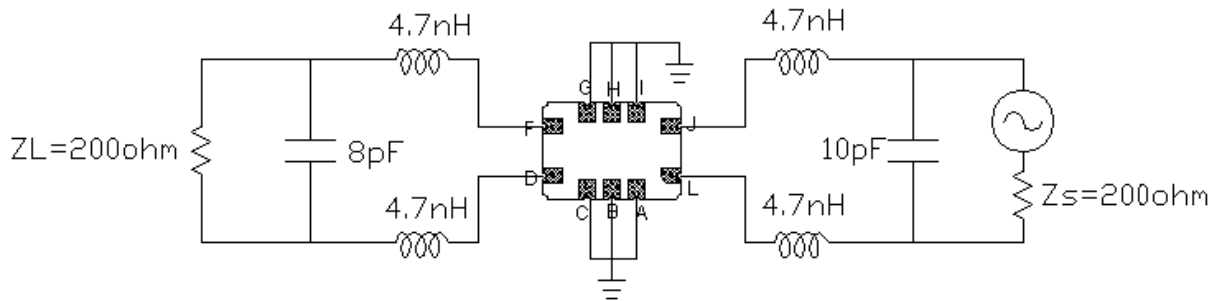
E. MEASUREMENT CIRCUIT

1. Single ended input 50 ohm to Single ended Output 50 ohm

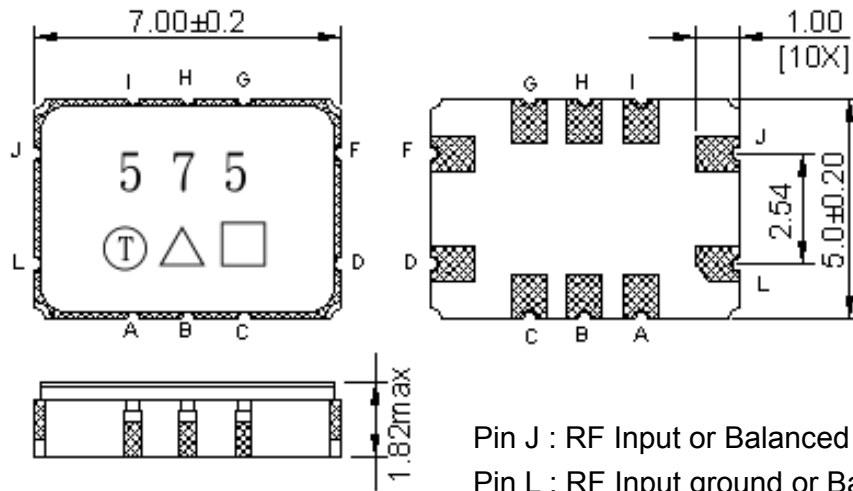
:



2. Balanced input 200 ohm to Balanced Output 200 ohm



F.OUTLINE DRAWING:



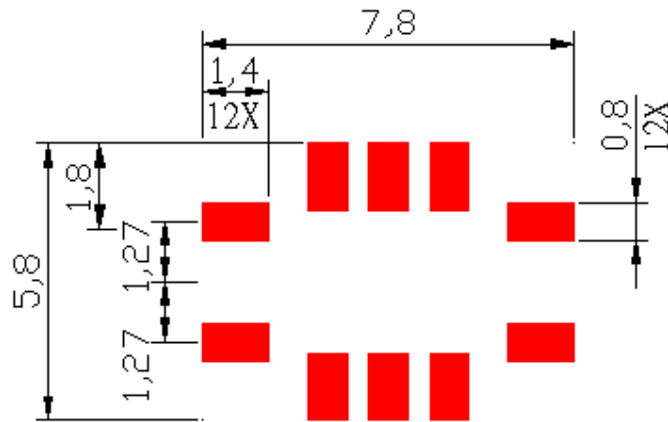
Pin J : RF Input or Balanced Input +
 Pin L : RF Input ground or Balanced input -
 Pin D : RF Output or Balanced Output+
 Pin F : RF Output ground or Balanced Output -
 Pin A,B,C,G,H,I : Ground

Unit: mm

□ : Week Code (Follow the table from planner each year)

Year	2005 2009	2006 2010	2007 2011	2008 2012
Product Code	B	b	<u>B</u>	<u>b</u>

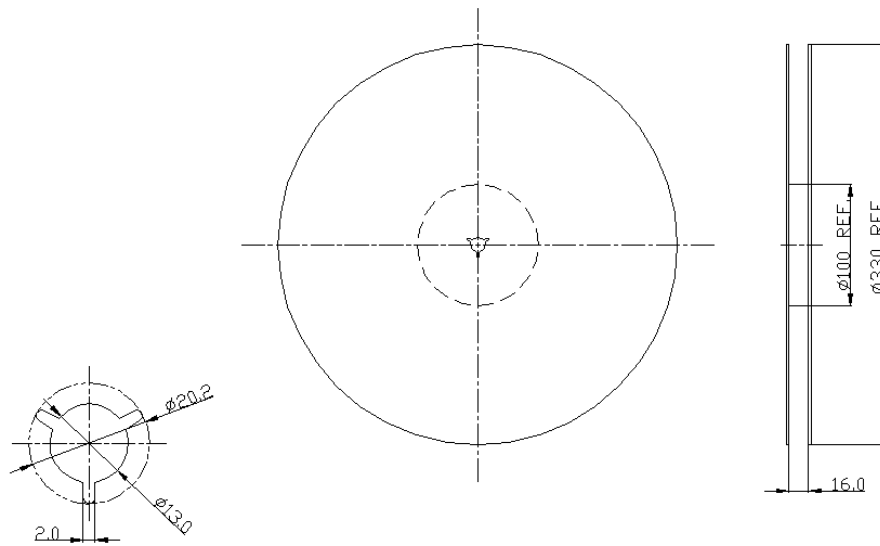
G. PCB Footprint



Unit: mm

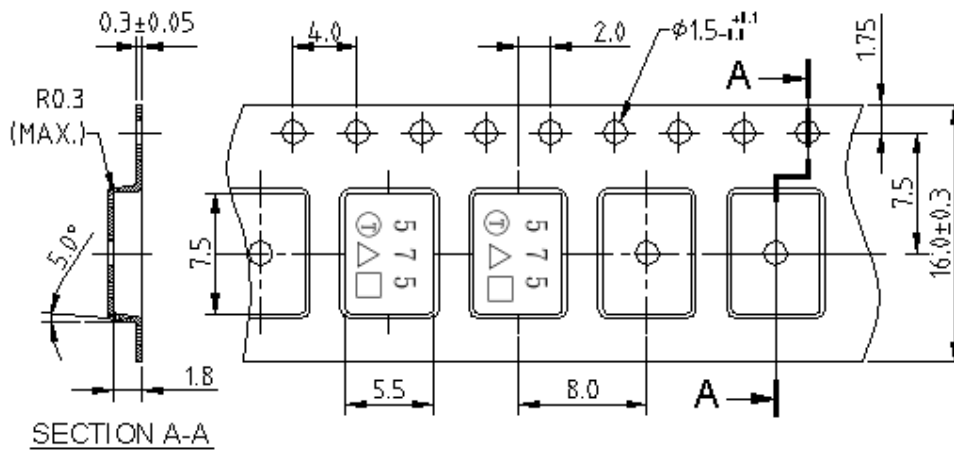
H. PACKING:

1. REEL DIMENSION



Unit: mm

2. TAPE DIMENSION



Unit: mm

I. RECOMMENDED REFLOW PROFILE:

