

**PLEASE CHECK WWW.MOLEX.COM FOR LATEST PART INFORMATION**

**Part Number:** [0050362287](#)  
**Status:** **Active**  
**Description:** 3.96mm (.156") Pitch KK@ Header, Breakaway, Vertical, Square Pin, with Friction Lock, 5 Circuits, 5µm (200") Tin (SN) Overall Plating

**Documents:**

[3D Model](#) [Product Specification PS-08-50 \(PDF\)](#)  
[Drawing \(PDF\)](#) [RoHS Certificate of Compliance \(PDF\)](#)

**Agency Certification**

CSA LR19980  
 UL E29179

**General**

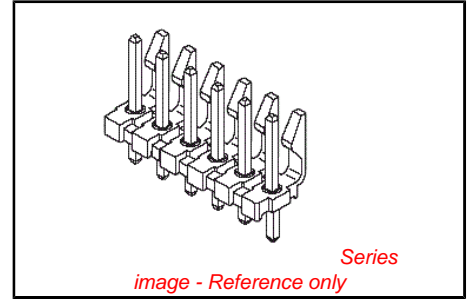
Product Family PCB Headers  
 Series 41671  
 Application Wire-to-Board  
 Product Name KK@

**Physical**

Breakaway Yes  
 Circuits (Loaded) 5  
 Circuits (maximum) 5  
 Color - Resin Black  
 Durability (mating cycles max) 50  
 Flammability 94V-0  
 Glow-Wire Compliant No  
 Lock to Mating Part Yes  
 Material - Metal Brass  
 Material - Plating Mating Tin  
 Material - Plating Termination Tin  
 Material - Resin Polyester  
 Number of Rows 1  
 Orientation Vertical  
 PC Tail Length (in) 0.172 In  
 PC Tail Length (mm) 4.37 mm  
 PCB Locator No  
 PCB Retention None  
 PCB Thickness Recommended (in) 0.062 In  
 PCB Thickness Recommended (mm) 1.60 mm  
 Packaging Type Bag  
 Pitch - Mating Interface (in) 0.156 In  
 Pitch - Mating Interface (mm) 3.96 mm  
 Plating min: Mating (µin) 200  
 Plating min: Mating (µm) 5.00  
 Plating min: Termination (µin) 200  
 Plating min: Termination (µm) 5.00  
 Polarized to Mating Part Yes  
 Polarized to PCB No  
 Shrouded Partial  
 Stackable No  
 Temperature Range - Operating 0°C to +75°C  
 Termination Interface: Style Through Hole

**Electrical**

Current - Maximum per Contact 7A



<p><b>EU RoHS</b>  <b>ELV and RoHS</b>  <b>Compliant</b>  <b>REACH SVHC</b>  <b>Contains SVHC: No</b>  <b>Halogen-Free</b>  <b>Status</b>  <b>Not Halogen-Free</b></p>	<p><b>China RoHS</b></p>
--	--------------------------

**Need more information on product environmental compliance?**  
 Email [productcompliance@molex.com](mailto:productcompliance@molex.com)  
 For a multiple part number RoHS Certificate of Compliance, [click here](#)  
 Please visit the [Contact Us](#) section for any non-product compliance questions.

**Search Parts in this Series**  
[41671Series](#)

**Mates With**  
[3069](#) Crimp Housing, [2139](#) Crimp Housing, [6442](#) KK@ Crimp Housing, [41695](#) Crimp Housing, [7674](#) IDT Assembly, [7675](#) IDT Connector, [41815](#) PCB Connector, [2145](#) PCB Connector, [3215](#) KK@ PCB Connector

Voltage - Maximum 250V

**Solder Process Data**

Duration at Max. Process Temperature (seconds) 5  
Lead-free Process Capability Wave Capable (TH only)  
Max. Cycles at Max. Process Temperature 1  
Process Temperature max. C 235

**Material Info**

Old Part Number 41671-C05A222

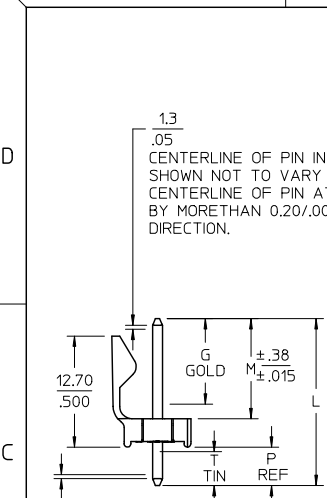
**Reference - Drawing Numbers**

Product Specification PS-08-50  
Sales Drawing SD-41671-001

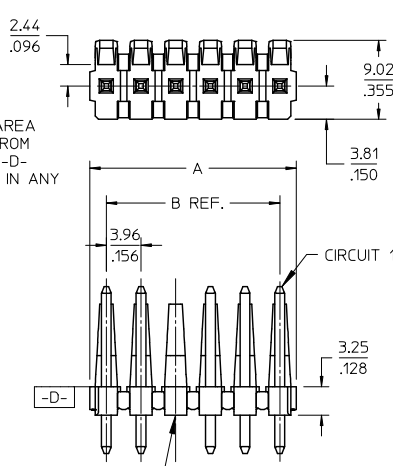
This document was generated on 04/23/2010

**PLEASE CHECK [WWW.MOLEX.COM](http://WWW.MOLEX.COM) FOR LATEST PART INFORMATION**

6 5 4 3 2 1



1.3 CENTERLINE OF PIN IN AREA SHOWN NOT TO VARY FROM CENTERLINE OF PIN AT DATUM -D- BY MORE THAN 0.13/.005 IN ANY DIRECTION.

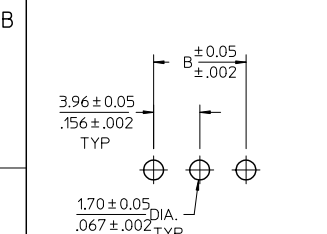


OPTIONAL VOIDED CKT. SEE CHART FOR LOCATIONS

A-41671- \* N \* \* \* \*  
 OPTION -PIN- PACKING  
 A-BRASS -2161- BULK PACK  
 B-BRASS -2161- TUBE PACK  
 C-BRASS -43294- BULK PACK

NO OF CKTS  
 DIM M.L.P  
 PLATING

VOID LOCATIONS  
 BLANK=NO VOIDS  
 NO-CKT NO VOIDED  
 MULT-VOIDS=51 UP



PCB LAYOUT: COMPONENT SIDE  
 RECOMMENDED PCB THICKNESS:  
 1.57 ± .18 / .062 ± .007

- NOTES:
- MATERIAL: POLYESTER, 94V-0, MOLDED BLACK
  - FINISH: PER ES-88
    - (102) OVERALL TIN: 0.00508/.000200 MIN.
    - OVERALL COPPER: 0.00254/.000100 MIN.
    - (222) OVERALL MATTE TIN: 0.00254/.000100 MIN.
    - OVERALL NICKEL: 0.00127/.000050 MIN.
    - (208) SELECT GOLD: 0.00038/.000015 MIN.
    - \*SELECT TIN: 0.00254/.000100 MIN.
    - OVERALL NICKEL UNDERPLATE: 0.00127/.000050 MIN.
    - (228) SELECT GOLD: 0.00076/.000030 MIN.
    - \*SELECT TIN: 0.00254/.000100 MIN.
    - OVERALL NICKEL UNDERPLATE: 0.00127/.000050 MIN.
    - (501) OVERALL GOLD: 0.00051/.000020 MIN.
    - OVERALL NICKEL: 0.00076/.000030 MIN.
    - (503) OVERALL GOLD: 0.00076/.000030 MIN.
    - OVERALL NICKEL: 0.00127/.000050 MIN.
  - THE PRIMARY SHIPPING CARTON WILL BE LABELED \*COMPLIANT TO RoHS DIRECTIVE 2002/95/EC AND ELV ANNEX II OF DIRECTIVE 2000/53/EC\*. CARTONS WITHOUT THIS LABEL MAY CONTAIN PRODUCT WITH TIN-LEAD PLATING.
  - PRODUCT SPECIFICATION: PS-08-50.
  - PACKAGING INFO: SEE TABLE.
  - SOLDERABILITY: PER SMES-152.
  - PIN PUSH-OUT FORCE: PRIOR TO SOLDERING, 3 LB MIN. FORCE IN EITHER DIRECTION SHALL BE REQUIRED TO PUSH THE PIN OUT OF THE HEADER.
  - PARTS ARE STACKABLE END TO END ON 3.96/.156 CENTERS. (SPACING TABS MUST BE REMOVED ON CIRCUIT SIZES 1-23 BEFORE PARTS ARE STACKABLE.
  - THIS PART CONFORMS TO CLASS B REQUIREMENTS OF COSMETIC SPECIFICATION PS-45499-002.

CKT	B	A
2	3.96	6.78/7.87
	.156	.267/1.310
3	7.92	10.74/11.84
	.312	.423/1.466
4	11.89	14.71/15.80
	.468	.579/1.622
5	15.85	18.67/19.76
	.624	.735/1.778
6	19.81	22.63/23.72
	.780	.891/1.934
7	23.77	26.59/27.69
	.936	1.047/1.090
8	27.74	30.56/31.65
	1.092	1.203/1.246
9	31.70	34.52/35.61
	1.248	1.359/1.402
10	35.66	38.48/39.57
	1.404	1.515/1.558
11	39.62	42.44/43.54
	1.560	1.671/1.714
12	43.59	46.41/47.50
	1.716	1.827/1.870
13	47.55	50.37/51.46
	1.872	1.983/2.026
14	51.51	54.33/55.42
	2.028	2.139/2.182
15	55.47	58.29/59.39
	2.184	2.295/2.338
16	59.44	62.26/63.35
	2.340	2.451/2.494
17	63.40	66.22/67.31
	2.496	2.607/2.650
18	67.36	70.18/71.27
	2.652	2.763/2.806
19	71.32	74.14/75.23
	2.808	2.919/2.962
20	75.29	78.11/79.20
	2.964	3.075/3.118
21	79.25	82.07/83.16
	3.120	3.231/3.274
22	83.21	86.03/87.12
	3.276	3.387/3.430
23	87.17	89.94/91.08
	3.432	3.541/3.586
24	91.14	93.85/95.00
	3.588	3.695/3.740

2-*	AJ
1	AJ
SHT	REV

CHANGE PIN	DESCRIPTION
EC NO: UCP2009-1378	
DRWN:MKIPPER	2008/12/08
CHKD:SSOUSEK	2008/12/08
APPR:FSMITH	2008/12/08
REV	
AJ	

QUALITY SYMBOLS
▽=0
▽=0

GENERAL TOLERANCES (UNLESS SPECIFIED)
4 PLACES ± --- ± ---
3 PLACES ± --- ± .010
2 PLACES ± 0.25 ± .015
1 PLACE ± 0.38 ± ---
ANGULAR ± 1/2°

DIMENSION STYLE	SCALE	DESIGN UNITS
MM/IN	1.5:1	INCH
DRAWN BY	DATE	TITLE
JSCHAFFER	2004/04/05	KK 156 HEADER ASSEMBLY
CHECKED BY	DATE	FRICITION LOCK STRAIGHT
KSAMIEC	2004/04/05	BREAKAWAY
APPROVED BY	DATE	MOLEX MOLEX INCORPORATED
MARGULIS	2004/04/05	DOCUMENT NO. SD-41671-001
MATERIAL NO.		SHEET NO. 1 OF 8

DRAFT WHERE APPLICABLE MUST REMAIN WITHIN DIMENSIONS

SEE CHART

THIS DRAWING CONTAINS INFORMATION THAT IS PROPRIETARY TO MOLEX INCORPORATED AND SHOULD NOT BE USED WITHOUT WRITTEN PERMISSION

tb\_frame\_A\_P\_AM\_T Rev. E 2006/04/15 5 4 3 2 1

Ckts	Material No	Engineer Number	Material No	Engineer Number	Material No	Engineer Number
2	26-48-1025	A-41671-A02A102	41671-0001	A-41671-C02A208	41671-0024	A-41671-C02A228
3	26-48-1035	A-41671-A03A102	41671-0002	A-41671-C03A208	41671-0025	A-41671-C03A228
4	26-48-1045	A-41671-A04A102	41671-0003	A-41671-C04A208	41671-0026	A-41671-C04A228
5	26-48-1055	A-41671-A05A102	41671-0004	A-41671-C05A208	41671-0027	A-41671-C05A228
6	26-48-1065	A-41671-A06A102	41671-0005	A-41671-C06A208	41671-0028	A-41671-C06A228
7	26-48-1075	A-41671-A07A102	41671-0006	A-41671-C07A208	41671-0029	A-41671-C07A228
8	26-48-1085	A-41671-A08A102	41671-0007	A-41671-C08A208	41671-0030	A-41671-C08A228
9	26-48-1095	A-41671-A09A102	41671-0008	A-41671-C09A208	41671-0031	A-41671-C09A228
10	26-48-1105	A-41671-A10A102	41671-0009	A-41671-C10A208	41671-0032	A-41671-C10A228
11	26-48-1115	A-41671-A11A102	41671-0010	A-41671-C11A208	41671-0033	A-41671-C11A228
12	26-48-1125	A-41671-A12A102	41671-0011	A-41671-C12A208	41671-0034	A-41671-C12A228
13	26-48-1135	A-41671-A13A102	41671-0012	A-41671-C13A208	41671-0035	A-41671-C13A228
14	26-48-1145	A-41671-A14A102	41671-0013	A-41671-C14A208	41671-0036	A-41671-C14A228
15	26-48-1155	A-41671-A15A102	41671-0014	A-41671-C15A208	41671-0037	A-41671-C15A228
16	26-48-1165	A-41671-A16A102	41671-0015	A-41671-C16A208	41671-0038	A-41671-C16A228
17	26-48-1175	A-41671-A17A102	41671-0016	A-41671-C17A208	41671-0039	A-41671-C17A228
18	26-48-1185	A-41671-A18A102	41671-0017	A-41671-C18A208	41671-0040	A-41671-C18A228
19	26-48-1195	A-41671-A19A102	41671-0018	A-41671-C19A208	41671-0041	A-41671-C19A228
20	26-48-1205	A-41671-A20A102	41671-0019	A-41671-C20A208	41671-0042	A-41671-C20A228
21	26-48-1215	A-41671-A21A102	41671-0020	A-41671-C21A208	41671-0043	A-41671-C21A228
22	26-48-1225	A-41671-A22A102	41671-0021	A-41671-C22A208	41671-0044	A-41671-C22A228
23	26-48-1235	A-41671-A23A102	41671-0022	A-41671-C23A208	41671-0045	A-41671-C23A228
24	26-48-1245	A-41671-A24A102	41671-0023	A-41671-C24A208	41671-0046	A-41671-C24A228
	STD TIN CATALOG PRODUCT		STD 15 GOLD CATALOG PRODUCT		STD 30 GOLD CATALOG PRODUCT	

<b>REV:</b> <b>AJ</b>	<b>ECR/ECN INFORMATION:</b> <b>EC. NO. UCP2009-1378</b> <b>DATE: 12/8/2008</b>	<b>TITLE:</b> <b>KK .156 HEADER ASSEMBLY</b> <b>FRICITION LOCK STRAIGHT</b> <b>2-24 CKTS.</b>	<b>SHEET No.</b> <b>- 2 -</b>
<b>DOCUMENT NUMBER:</b> <b>SD - 41671 - 001</b>	<b>CREATED / REVISED BY:</b> <b>MKIPPER</b>	<b>CHECKED BY:</b> <b>SSOUSEK</b>	<b>APPROVED BY:</b> <b>FSMITH</b>

TEMPLATE FILENAME: PRODUCT\_SPEC [SIZE\_A](V.1). DOC

Group No:	A-41671-ANA501	Group No:	A-41671-ANA503	Group No:	A-41671-AND102	Group No:	A-41671-ANB102	
Pin No:	2161-1 (501)	Pin No:	2161 - 1(503)	Pin No:	2161-56 (102)	Pin No:	2161-1 (102)	
Plating:	501 GOLD	Plating:	503 GOLD	Plating:	102 TIN	Plating:	102 TIN	
Pin Length L	.750 / 19.05	Pin Length L	.750 / 19.05	Pin Length L	.703 / 17.86	Pin Length L	.750 / 19.05	
Mating M	.450 / 11.43	Mating M	.450 / 11.43	Mating M	.450 / 11.43	Mating M	.523 / 13.28	
Gold Loc G	OVERALL	Gold Loc G	OVERALL	Gold Loc G	NA	Gold Loc G	NA	
PC Tail P	.172 / 4.37	PC Tail P	.172 / 4.37	PC Tail P	.125 / 3.18	PC Tail P	.099 / 2.51	
Tin Loc T	NA	Tin Loc T	NA	Tin Loc T	OVERALL	Tin Loc T	OVERALL	
Voided Ckts	NONE	Voided Ckts	NONE	Voided Ckts	NONE	Voided Ckts	NONE	
Pack Per	PK-41671-001	Pack Per	PK-41671-001	Pack Per	PK-41671-001	Pack Per	PK-41671-001	
Ckts	Material No	Engineer Number	Material No	Engineer Number	Material No	Engineer Number	Material No	Engineer Number
2	26-48-2025	A-41671-A02A501	26-48-9026	A-41671-A02A503	26-48-9023	A-41671-A02D102	41671-0064	A-41671-A02B102
3	26-48-2035	A-41671-A03A501	41671-0047	A-41671-A03A503	26-48-9033	A-41671-A03D102	41671-0065	A-41671-A03B102
4	26-48-2045	A-41671-A04A501	41671-0048	A-41671-A04A503	26-48-9043	A-41671-A04D102	41671-0066	A-41671-A04B102
5	26-48-2055	A-41671-A05A501	26-48-9056	A-41671-A05A503	26-48-9053	A-41671-A05D102	41671-0067	A-41671-A05B102
6	26-48-2065	A-41671-A06A501	41671-0049	A-41671-A06A503	26-48-9063	A-41671-A06D102	41671-0068	A-41671-A06B102
7	26-48-2075	A-41671-A07A501	41671-0050	A-41671-A07A503	26-48-9073	A-41671-A07D102	41671-0069	A-41671-A07B102
8	26-48-2085	A-41671-A08A501	41671-0051	A-41671-A08A503	26-48-9083	A-41671-A08D102	41671-0070	A-41671-A08B102
9	26-48-2095	A-41671-A09A501	26-48-9096	A-41671-A09A503	26-48-9093	A-41671-A09D102	26-48-6095	A-41671-A09B102
10	26-48-2105	A-41671-A10A501	26-48-9106	A-41671-A10A503	26-48-9103	A-41671-A10D102	41671-0071	A-41671-A10B102
11	26-48-2115	A-41671-A11A501	41671-0052	A-41671-A11A503	26-48-9113	A-41671-A11D102	41671-0072	A-41671-A11B102
12	26-48-2125	A-41671-A12A501	26-48-9126	A-41671-A12A503	26-48-9123	A-41671-A12D102	41671-0073	A-41671-A12B102
13	26-48-2135	A-41671-A13A501	41671-0053	A-41671-A13A503	26-48-9133	A-41671-A13D102	41671-0074	A-41671-A13B102
14	26-48-2145	A-41671-A14A501	41671-0054	A-41671-A14A503	26-48-9143	A-41671-A14D102	41671-0075	A-41671-A14B102
15	26-48-2155	A-41671-A15A501	41671-0055	A-41671-A15A503	26-48-9153	A-41671-A15D102	41671-0076	A-41671-A15B102
16	26-48-2165	A-41671-A16A501	41671-0056	A-41671-A16A503	26-48-9163	A-41671-A16D102	41671-0077	A-41671-A16B102
17	26-48-2175	A-41671-A17A501	41671-0057	A-41671-A17A503	26-48-9173	A-41671-A17D102	41671-0078	A-41671-A17B102
18	26-48-2185	A-41671-A18A501	41671-0058	A-41671-A18A503	26-48-9183	A-41671-A18D102	41671-0079	A-41671-A18B102
19	26-48-2195	A-41671-A19A501	41671-0059	A-41671-A19A503	26-48-9193	A-41671-A19D102	41671-0080	A-41671-A19B102
20	26-48-2205	A-41671-A20A501	41671-0060	A-41671-A20A503	26-48-9203	A-41671-A20D102	41671-0081	A-41671-A20B102
21	26-48-2215	A-41671-A21A501	41671-0061	A-41671-A21A503	26-48-9213	A-41671-A21D102	41671-0082	A-41671-A21B102
22	26-48-2225	A-41671-A22A501	41671-0062	A-41671-A22A503	26-48-9223	A-41671-A22D102	41671-0083	A-41671-A22B102
23	26-48-2235	A-41671-A23A501	41671-0063	A-41671-A23A503	26-48-9233	A-41671-A23D102	41671-0084	A-41671-A23B102
24	26-48-2245	A-41671-A24A501	26-48-9246	A-41671-A24A503	26-48-9243	A-41671-A24D102	26-48-6245	A-41671-A24B102

REV: <b>AJ</b>	ECR/ECN INFORMATION: EC. NO. <b>UCP2009-1378</b> DATE: <b>12/8/2008</b>	TITLE: <b>KK .156 HEADER ASSEMBLY FRICTION LOCK STRAIGHT 2-24 CKTS.</b>	SHEET No. <b>- 3 -</b>
DOCUMENT NUMBER: <b>SD - 41671 - 001</b>	CREATED / REVISED BY: <b>MKIPPER</b>	CHECKED BY: <b>SSOUSEK</b>	APPROVED BY: <b>FSMITH</b>
<small>TEMPLATE FILENAME: PRODUCT_SPEC [SIZE_A](V.1). DOC</small>			

Group No:	A-41671-ANF102	Group No:	A-41671-ANB501	Group No:	A-41671-ANF501	Group No:	A-41671-ANN102	
Pin No:	2161-24 (102)	Pin No:	2161-1 (501)	Pin No:	2161-24 (501)	Pin No:	2161-19 (102)	
Plating:	102 TIN	Plating:	501 GOLD	Plating:	501 GOLD	Plating:	102 TIN	
Pin Length L	.800 / 20.32	Pin Length L	.750 / 19.05	Pin Length L	.800 / 20.32	Pin Length L	1.032 / 26.21	
Mating M	.480 / 12.19	Mating M	.523 / 13.28	Mating M	.480 / 12.19	Mating M	.450 / 11.43	
Gold Loc G	NA	Gold Loc G	OVERALL	Gold Loc G	OVERALL	Gold Loc G	NA	
PC Tail P	.192 / 4.88	PC Tail P	.099 / 2.51	PC Tail P	.192 / 4.88	PC Tail P	.454 / 11.53	
Tin Loc T	OVERALL	Tin Loc T	NA	Tin Loc T	NA	Tin Loc T	OVERALL	
Voided Ckts	NONE	Voided Ckts	NONE	Voided Ckts	NONE	Voided Ckts	NONE	
Pack Per	PK-41671-001	Pack Per	PK-41671-001	Pack Per	PK-41671-001	Pack Per	PK-41671-001	
Ckts	Material No	Engineer Number	Material No	Engineer Number	Material No	Engineer Number	Material No	Engineer Number
2	26-48-4026	A-41671-A02F102	26-48-2027	A-41671-A02B501	41671-0250	A-41671-A02F501		A-41671-A02N102
3	26-48-4036	A-41671-A03F102	26-48-2037	A-41671-A03B501	41671-0350	A-41671-A03F501		A-41671-A03N102
4	26-48-4046	A-41671-A04F102	26-48-2047	A-41671-A04B501	41671-0450	A-41671-A04F501		A-41671-A04N102
5	26-48-4056	A-41671-A05F102	26-48-2057	A-41671-A05B501	41671-0550	A-41671-A05F501		A-41671-A05N102
6	26-48-4066	A-41671-A06F102	26-48-2067	A-41671-A06B501	41671-0650	A-41671-A06F501		A-41671-A06N102
7	26-48-4076	A-41671-A07F102	26-48-2077	A-41671-A07B501	41671-0750	A-41671-A07F501		A-41671-A07N102
8	26-48-4086	A-41671-A08F102	26-48-2087	A-41671-A08B501	41671-0850	A-41671-A08F501		A-41671-A08N102
9	26-48-4096	A-41671-A09F102	26-48-2097	A-41671-A09B501	41671-0950	A-41671-A09F501		A-41671-A09N102
10	26-48-4106	A-41671-A10F102	26-48-2107	A-41671-A10B501	41671-1050	A-41671-A10F501		A-41671-A10N102
11	26-48-4116	A-41671-A11F102	26-48-2117	A-41671-A11B501	41671-1150	A-41671-A11F501		A-41671-A11N102
12	26-48-4126	A-41671-A12F102	26-48-2127	A-41671-A12B501	41671-1250	A-41671-A12F501		A-41671-A12N102
13	26-48-4136	A-41671-A13F102	26-48-2137	A-41671-A13B501	41671-1350	A-41671-A13F501		A-41671-A13N102
14	26-48-4146	A-41671-A14F102	26-48-2147	A-41671-A14B501	41671-1450	A-41671-A14F501		A-41671-A14N102
15	26-48-4156	A-41671-A15F102	26-48-2157	A-41671-A15B501	41671-1550	A-41671-A15F501		A-41671-A15N102
16	26-48-4166	A-41671-A16F102	26-48-2167	A-41671-A16B501	41671-1650	A-41671-A16F501		A-41671-A16N102
17	26-48-4176	A-41671-A17F102	26-48-2177	A-41671-A17B501	41671-1750	A-41671-A17F501		A-41671-A17N102
18	26-48-4186	A-41671-A18F102	26-48-2187	A-41671-A18B501	41671-1850	A-41671-A18F501		A-41671-A18N102
19	26-48-4196	A-41671-A19F102	26-48-2197	A-41671-A19B501	41671-1950	A-41671-A19F501		A-41671-A19N102
20	26-48-4206	A-41671-A20F102	26-48-2207	A-41671-A20B501	41671-2050	A-41671-A20F501		A-41671-A20N102
21	26-48-4216	A-41671-A21F102	26-48-2217	A-41671-A21B501	41671-2150	A-41671-A21F501		A-41671-A21N102
22	26-48-4226	A-41671-A22F102	26-48-2227	A-41671-A22B501	41671-2250	A-41671-A22F501		A-41671-A22N102
23	26-48-4236	A-41671-A23F102	26-48-2237	A-41671-A23B501	41671-2350	A-41671-A23F501		A-41671-A23N102
24	26-48-4246	A-41671-A24F102	26-48-2247	A-41671-A24B501	41671-2450	A-41671-A24F501	26-48-8247	A-41671-A24N102

REV: <b>AJ</b>	ECR/ECN INFORMATION: EC. NO. <b>UCP2009-1378</b> DATE: <b>12/8/2008</b>	TITLE: <b>KK .156 HEADER ASSEMBLY FRICTION LOCK STRAIGHT 2-24 CKTS.</b>	SHEET No. <b>- 4 -</b>
DOCUMENT NUMBER: <b>SD - 41671 - 001</b>	CREATED / REVISED BY: <b>MKIPPER</b>	CHECKED BY: <b>SSOUSEK</b>	APPROVED BY: <b>FSMITH</b>
<small>TEMPLATE FILENAME: PRODUCT_SPEC [SIZE_A](V.1). DOC</small>			

Group No:	A-41671-CNP228	Group No:	A-41671-CNR208	Group No:	A-41671-ANT102	Group No:	A-41671-ANA122	
Pin No:	43294-0282	Pin No:	43294-0344	Pin No:	2161-37 (102)	Pin No:	2161-1 (122)	
Plating:	228 30 GOLD	Plating:	208 15 GOLD	Plating:	102 TIN	Plating:	122 TIN	
Pin Length L	.800 / 20.32	Pin Length L	.870 / 22.10	Pin Length L	1.100 / 27.94	Pin Length L	.750 / 19.05	
Mating M	.523 / 13.28	Mating M	.450 / 11.43	Mating M	.486 / 12.34	Mating M	.450 / 11.43	
Gold Loc G	.350 / 8.89	Gold Loc G	.400 / 10.16	Gold Loc G	NA	Gold Loc G	NA	
PC Tail P	.149 / 3.78	PC Tail P	.292 / 7.42	PC Tail P	.486 / 12.34	PC Tail P	.172 / 4.37	
Tin Loc T	.200 / 5.08	Tin Loc T	.200 / 5.08	Tin Loc T	OVERALL	Tin Loc T	OVERALL	
Voided Ckts	NONE	Voided Ckts	NONE	Voided Ckts	NONE	Voided Ckts	NONE	
Pack Per	PK-41671-001	Pack Per	PK-41671-001	Pack Per	PK-41671-001	Pack Per	PK-41671-001	
Ckts	Material No	Engineer Number	Material No	Engineer Number	Material No	Engineer Number	Material No	Engineer Number
2	41671-2451	A-41671-C02P228	41671-2474	A-41671-C02R208	41671-3400	A-41671-A02T102	41671-3423	A-41671-A02A122
3	41671-2452	A-41671-C03P228	41671-2475	A-41671-C03R208	41671-3401	A-41671-A03T102	41671-3424	A-41671-A03A122
4	41671-2453	A-41671-C04P228	41671-2476	A-41671-C04R208	41671-3402	A-41671-A04T102	41671-3425	A-41671-A04A122
5	41671-2454	A-41671-C05P228	41671-2477	A-41671-C05R208	41671-3403	A-41671-A05T102	41671-3426	A-41671-A05A122
6	41671-2455	A-41671-C06P228	41671-2478	A-41671-C06R208	41671-3404	A-41671-A06T102	41671-3427	A-41671-A06A122
7	41671-2456	A-41671-C07P228	41671-2479	A-41671-C07R208	41671-3405	A-41671-A07T102	41671-3428	A-41671-A07A122
8	41671-2457	A-41671-C08P228	41671-2480	A-41671-C08R208	41671-3406	A-41671-A08T102	41671-3429	A-41671-A08A122
9	41671-2458	A-41671-C09P228	41671-2481	A-41671-C09R208	41671-3407	A-41671-A09T102	41671-3430	A-41671-A09A122
10	41671-2459	A-41671-C10P228	41671-2482	A-41671-C10R208	41671-3408	A-41671-A10T102	41671-3431	A-41671-A10A122
11	41671-2460	A-41671-C11P228	41671-2483	A-41671-C11R208	41671-3409	A-41671-A11T102	41671-3432	A-41671-A11A122
12	41671-2461	A-41671-C12P228	41671-2484	A-41671-C12R208	41671-3410	A-41671-A12T102	41671-3433	A-41671-A12A122
13	41671-2462	A-41671-C13P228	41671-2485	A-41671-C13R208	41671-3411	A-41671-A13T102	41671-3434	A-41671-A13A122
14	41671-2463	A-41671-C14P228	41671-2486	A-41671-C14R208	41671-3412	A-41671-A14T102	41671-3435	A-41671-A14A122
15	41671-2464	A-41671-C15P228	41671-2487	A-41671-C15R208	41671-3413	A-41671-A15T102	41671-3436	A-41671-A15A122
16	41671-2465	A-41671-C16P228	41671-2488	A-41671-C16R208	41671-3414	A-41671-A16T102	41671-3437	A-41671-A16A122
17	41671-2466	A-41671-C17P228	41671-2489	A-41671-C17R208	41671-3415	A-41671-A17T102	41671-3438	A-41671-A17A122
18	41671-2467	A-41671-C18P228	41671-2490	A-41671-C18R208	41671-3416	A-41671-A18T102	41671-3439	A-41671-A18A122
19	41671-2468	A-41671-C19P228	41671-2491	A-41671-C19R208	41671-3417	A-41671-A19T102	41671-3440	A-41671-A19A122
20	41671-2469	A-41671-C20P228	41671-2492	A-41671-C20R208	41671-3418	A-41671-A20T102	41671-3441	A-41671-A20A122
21	41671-2470	A-41671-C21P228	41671-2493	A-41671-C21R208	41671-3419	A-41671-A21T102	41671-3442	A-41671-A21A122
22	41671-2471	A-41671-C22P228	41671-2494	A-41671-C22R208	41671-3420	A-41671-A22T102	41671-3443	A-41671-A22A122
23	41671-2472	A-41671-C23P228	41671-2495	A-41671-C23R208	41671-3421	A-41671-A23T102	41671-3444	A-41671-A23A122
24	41671-2473	A-41671-C24P228	41671-2496	A-41671-C24R208	41671-3422	A-41671-A24T102	41671-3445	A-41671-A24A122

<u>REV:</u> <b>AJ</b>	<u>ECR/ECN INFORMATION:</u> <b>EC. NO. UCP2009-1378</b> <b>DATE: 12/8/2008</b>	<u>TITLE:</u> <b>KK .156 HEADER ASSEMBLY FRICTION LOCK STRAIGHT 2-24 CKTS.</b>	<u>SHEET No.</u> <b>- 5 -</b>
<u>DOCUMENT NUMBER:</u> <b>SD - 41671 - 001</b>	<u>CREATED / REVISED BY:</u> <b>MKIPPER</b>	<u>CHECKED BY:</u> <b>SSOUSEK</b>	<u>APPROVED BY:</u> <b>FSMITH</b>
<small>TEMPLATE FILENAME: PRODUCT_SPEC [SIZE_A](V.1). DOC</small>			

Group No:	A-41671-ANA102-* REF SEE SHT 1		Group No:	A-41671-ANA102-* REF SEE SHT 1		Group No:	A-41671-ANA102-* REF SEE SHT 1	
Pin No:			Pin No:			Pin No:		
Plating:			Plating:			Plating:		
Pin Length L			Pin Length L			Pin Length L		
Mating M			Mating M			Mating M		
Gold Loc G			Gold Loc G			Gold Loc G		
PC Tail P			PC Tail P			PC Tail P		
Tin Loc T			Tin Loc T			Tin Loc T		
Voided Ckts	SEE CHART BELOW		Voided Ckts	SEE CHART BELOW		Voided Ckts	SEE CHART BELOW	
Pack Per			Pack Per			Pack Per		
Material No	Engineer Number	Void Ckts	Material No	Engineer Number	Void Ckts	Material No	Engineer Number	Void Ckts
26-50-3030	A-41671-A03A102-2	2	26-50-3073	A-41671-A07A102-3	3	26-50-3202	A-41671-A20A102-51	2,4,6,8 10,12,14,16
26-50-3040	A-41671-A04A102-2	2	26-50-5080	A-41671-A08A102-51	2,4	26-50-3167	A-41671-A16A102-53	2,4,6,8
26-50-3050	A-41671-A05A102-2	2	26-50-3063	A-41671-A06A102-3	3	26-50-3152	A-41671-A15A102-52	4,6,8,10,12,14
26-50-3060	A-41671-A06A102-2	2	26-50-3071	A-41671-A07A102-52	2,4,6	26-50-3126	A-41671-A12A102-53	2,3,5,6,8,10
26-50-3070	A-41671-A07A102-2	2	26-50-3051	A-41671-A05A102-51	2,4	26-50-3240	A-41671-A24A102-2	2
26-50-3080	A-41671-A08A102-2	2	26-50-3062	A-41671-A06A102-4	4	26-50-5090	A-41671-A10A102-55	2,5
26-50-3090	A-41671-A09A102-2	2	26-50-3068	A-41671-A06A102-6	6	41671-3100	A-41671-A05A102-3	3
26-50-3100	A-41671-A10A102-2	2	26-50-3111	A-41671-A11A102-51	5,10	41671-3112	A-41671-A14A102-12	12
26-50-3110	A-41671-A11A102-2	2	26-50-3065	A-41671-A06A102-5	5	41671-3113	A-41671-A14A102-51	11, 12
26-50-3120	A-41671-A12A102-2	2	26-50-3054	A-41671-A05A102-4	4	41671-3446	A-41671-A06A102-55	1, 3, 5
26-50-3130	A-41671-A13A102-2	2	26-50-3154	A-41671-A15A102-4	4			
26-50-3140	A-41671-A14A102-2	2	26-50-3145	A-41671-A14A102-55	2,4,8,12			
26-50-3150	A-41671-A15A102-2	2	26-50-3155	A-41671-A15A102-54	3,10,13			
26-50-3160	A-41671-A16A102-2	2	26-50-3066	A-41671-A6A102-54	2,4			
26-50-3170	A-41671-A17A102-2	2	26-50-3108	A-41671-A10A102-53	3,10			
26-50-3180	A-41671-A18A102-2	2	26-50-3103	A-41671-A10A102-7	7			
26-50-3190	A-41671-A19A102-2	2	26-50-3087	A-41671-A8A102-52	5,7			
26-50-3200	A-41671-A20A102-2	2	26-50-5081	A-41671-A08A102-6	6			
26-50-3210	A-41671-A21A102-2	2	26-50-3132	A-41671-A13A102-5	5			
26-50-3220	A-41671-A22A102-2	2	26-50-3165	A-41671-A16A102-52	2,15			
26-50-3230	A-41671-A23A102-2	2	41671-0085	A-41671-A10A102-56	5,8			

REV: <b>AJ</b>	ECR/ECN INFORMATION: EC. NO. <b>UCP2009-1378</b> DATE: <b>12/8/2008</b>	TITLE: <b>KK .156 HEADER ASSEMBLY FRICTION LOCK STRAIGHT 2-24 CKTS.</b>	SHEET No. <b>- 6 -</b>
DOCUMENT NUMBER: <b>SD - 41671 - 001</b>	CREATED / REVISED BY: <b>MKIPPER</b>	CHECKED BY: <b>SSOUSEK</b>	APPROVED BY: <b>FSMITH</b>
<small>TEMPLATE FILENAME: PRODUCT_SPEC [SIZE_A](V.1). DOC</small>			





