

PLEASE CHECK WWW.MOLEX.COM FOR LATEST PART INFORMATION

Part Number: [0022102051](#)
Status: **Active**
Description: 2.54mm (.100") Pitch KK® Wire-to-Board Header, Single Row, Vertical, 5 Circuits, PA Polyamide Nylon, Gold (Au) Plating

Documents:

3D Model	Product Specification PS-10-07 (PDF)
Packaging Specification (PDF)	RoHS Certificate of Compliance (PDF)
Drawing (PDF)	

Agency Certification

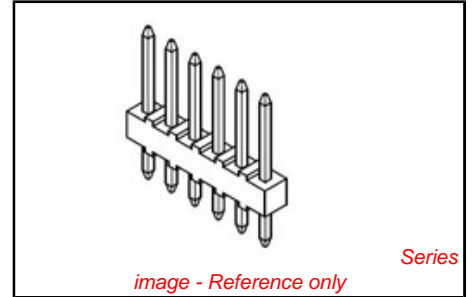
CSA	LR19980
UL	E29179

General

Product Family	PCB Headers
Series	4030
Application	Board-to-Board, Wire-to-Board
Product Name	KK®

Physical

Breakaway	No
Circuits (Loaded)	5
Circuits (maximum)	5
Color - Resin	Natural (White)
Durability (mating cycles max)	100
Flammability	94V-0
Glow-Wire Compliant	No
Lock to Mating Part	None
Material - Metal	Brass
Material - Plating Mating	Gold
Material - Plating Termination	Gold
Material - Resin	Nylon
Number of Rows	1
Orientation	Vertical
PC Tail Length (in)	0.135 In
PC Tail Length (mm)	3.43 mm
PCB Locator	No
PCB Retention	None
PCB Thickness Recommended (in)	0.062 In
PCB Thickness Recommended (mm)	1.60 mm
Packaging Type	Bag
Pitch - Mating Interface (in)	0.100 In
Pitch - Mating Interface (mm)	2.54 mm
Plating min: Mating (µin)	20
Plating min: Mating (µm)	0.5
Plating min: Termination (µin)	20
Plating min: Termination (µm)	0.5
Polarized to Mating Part	No
Polarized to PCB	No
Shrouded	No
Stackable	Yes
Surface Mount Compatible (SMC)	No
Temperature Range - Operating	0°C to +75°C
Termination Interface: Style	Through Hole



EU RoHS
ELV and RoHS
Compliant
REACH SVHC
 Not Reviewed
Halogen-Free
Status
Halogen-Free

China RoHS



Need more information on product environmental compliance?

Email productcompliance@molex.com
 For a multiple part number RoHS Certificate of Compliance, [click here](#)

Please visit the [Contact Us](#) section for any non-product compliance questions.

Search Parts in this Series
[4030Series](#)

Mates With
[2695](#) , [6471](#) , [7880](#) , [4455](#) , [7720](#)

Electrical

Current - Maximum per Contact 4A
Voltage - Maximum 250V

Solder Process Data

Duration at Max. Process Temperature (seconds) 5
Lead-free Process Capability Wave Capable (TH only)
Max. Cycles at Max. Process Temperature 1
Process Temperature max. C 235

Material Info

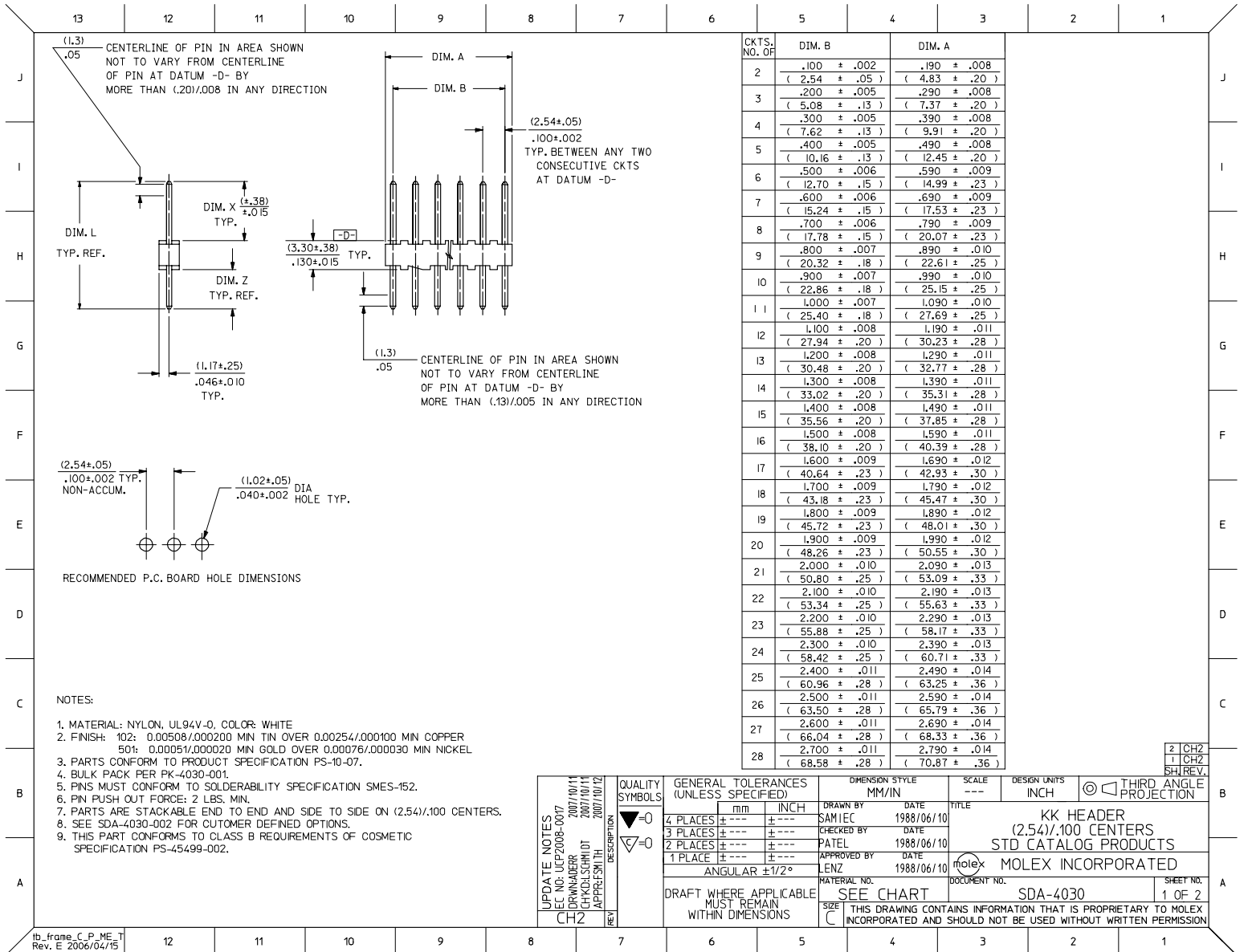
Old Part Number A-4030-05A501

Reference - Drawing Numbers

Product Specification PS-10-07
Sales Drawing SDA-4030

This document was generated on 04/09/2010

PLEASE CHECK WWW.MOLEX.COM FOR LATEST PART INFORMATION



NOTES:

1. MATERIAL: NYLON, UL94V-0, COLOR: WHITE
2. FINISH: 102: 0.00508/0.00200 MIN TIN OVER 0.00254/0.00100 MIN COPPER
504: 0.00051/0.00020 MIN GOLD OVER 0.00076/0.00030 MIN NICKEL
3. PARTS CONFORM TO PRODUCT SPECIFICATION PS-10-07.
4. BULK PACK PER PK-4030-001.
5. PINS MUST CONFORM TO SOLDERABILITY SPECIFICATION SMES-152.
6. PIN PUSH OUT FORCE: 2 LBS. MIN.
7. PARTS ARE STACKABLE END TO END AND SIDE TO SIDE ON (2.54)/.100 CENTERS.
8. SEE SDA-4030-002 FOR CUSTOMER DEFINED OPTIONS.
9. THIS PART CONFORMS TO CLASS B REQUIREMENTS OF COSMETIC SPECIFICATION PS-45499-002.

UPDATE NOTES DEC NO: UCP2008-0017 DRAWN BY: ZORWADER 2007/10/11 CHECKED BY: CHACKSCHMIDT 2007/10/11 APPROVED BY: JAPPEL 2007/10/11	QUALITY SYMBOLS ◻=0 ◻=0	GENERAL TOLERANCES (UNLESS SPECIFIED) <table border="1"> <tr><th></th><th>mm</th><th>INCH</th></tr> <tr><td>4 PLACES</td><td>± .005</td><td>± .0002</td></tr> <tr><td>3 PLACES</td><td>± .004</td><td>± .00015</td></tr> <tr><td>2 PLACES</td><td>± .003</td><td>± .0001</td></tr> <tr><td>1 PLACE</td><td>± .002</td><td>± .00005</td></tr> </table>		mm	INCH	4 PLACES	± .005	± .0002	3 PLACES	± .004	± .00015	2 PLACES	± .003	± .0001	1 PLACE	± .002	± .00005	DIMENSION STYLE MM/IN	SCALE ---	DESIGN UNITS INCH	<input checked="" type="checkbox"/> THIRD ANGLE PROJECTION
				mm	INCH																
4 PLACES	± .005	± .0002																			
3 PLACES	± .004	± .00015																			
2 PLACES	± .003	± .0001																			
1 PLACE	± .002	± .00005																			
DRAFT WHERE APPLICABLE MUST REMAIN WITHIN DIMENSIONS	DRAWN BY SAMIEC DATE 1988/06/10	CHECKED BY PATEL DATE 1988/06/10	APPROVED BY LENZ DATE 1988/06/10	TITLE KK HEADER (2.54)/.100 CENTERS STD CATALOG PRODUCTS	MATERIAL NO. SDA-4030	DOCUMENT NO. SDA-4030															

2 CH2
1 CH2
SH/REV

SHEET NO.
1 OF 2

13 12 11 10 9 8 7 6 5 4 3 2 1

ENG. NO.	PIN NO.	DIM. L	DIM. X	DIM. Z	PACKAGE PER	EDP NO. IN COL NO
A-4030 -NA(102)	2766 -K(102)	.560 (14,22)	.295 (7,49)	.135 (3,43)	PK-4030-001 BULK	1
A-4030 -NA(50 I)	2766 -K(50 I)	.560 (14,22)	.295 (7,49)	.135 (3,43)	PK-4030-001 BULK	2
A- -	-	()	()	()		
A- -	-	()	()	()		
A- -	-	()	()	()		
A- -	-	()	()	()		

COLUMN NO. 1			COLUMN NO. 2		
EDP NO.	ENG. NO.	NO OF SLOTS	EDP NO.	ENG. NO.	NO OF SLOTS
22-03-202I	A-4030-02A(102)	2	22-10-202I	A-4030-02A(50 I)	2
22-03-203I	A-4030-03A(102)	3	22-10-203I	A-4030-03A(50 I)	3
22-03-204I	A-4030-04A(102)	4	22-10-204I	A-4030-04A(50 I)	4
22-03-205I	A-4030-05A(102)	5	22-10-205I	A-4030-05A(50 I)	5
22-03-206I	A-4030-06A(102)	6	22-10-206I	A-4030-06A(50 I)	6
22-03-207I	A-4030-07A(102)	7	22-10-207I	A-4030-07A(50 I)	7
22-03-208I	A-4030-08A(102)	8	22-10-208I	A-4030-08A(50 I)	8
22-03-209I	A-4030-09A(102)	9	22-10-209I	A-4030-09A(50 I)	9
22-03-210I	A-4030-10A(102)	10	22-10-210I	A-4030-10A(50 I)	10
22-03-211I	A-4030-11A(102)	11	22-10-211I	A-4030-11A(50 I)	11
22-03-212I	A-4030-12A(102)	12	22-10-212I	A-4030-12A(50 I)	12
22-03-213I	A-4030-13A(102)	13	22-10-213I	A-4030-13A(50 I)	13
22-03-214I	A-4030-14A(102)	14	22-10-214I	A-4030-14A(50 I)	14
22-03-215I	A-4030-15A(102)	15	22-10-215I	A-4030-15A(50 I)	15
22-03-216I	A-4030-16A(102)	16	22-10-216I	A-4030-16A(50 I)	16
22-03-217I	A-4030-17A(102)	17	22-10-217I	A-4030-17A(50 I)	17
22-03-218I	A-4030-18A(102)	18	22-10-218I	A-4030-18A(50 I)	18
22-03-219I	A-4030-19A(102)	19	22-10-219I	A-4030-19A(50 I)	19
22-03-220I	A-4030-20A(102)	20	22-10-220I	A-4030-20A(50 I)	20
22-03-221I	A-4030-21A(102)	21	22-10-221I	A-4030-21A(50 I)	21
22-03-222I	A-4030-22A(102)	22	22-10-222I	A-4030-22A(50 I)	22
22-03-223I	A-4030-23A(102)	23	22-10-223I	A-4030-23A(50 I)	23
22-03-224I	A-4030-24A(102)	24	22-10-224I	A-4030-24A(50 I)	24
22-03-225I	A-4030-25A(102)	25	22-10-225I	A-4030-25A(50 I)	25
22-03-226I	A-4030-26A(102)	26	22-10-226I	A-4030-26A(50 I)	26
22-03-227I	A-4030-27A(102)	27	22-10-227I	A-4030-27A(50 I)	27
22-03-228I	A-4030-28A(102)	28	22-10-228I	A-4030-28A(50 I)	28

EDP NO.	ENG. NO.	NO OF SLOTS	EDP NO.	ENG. NO.	NO OF SLOTS
22-03-202I	A-4030-02A(102)	2	22-10-202I	A-4030-02A(50 I)	2
22-03-203I	A-4030-03A(102)	3	22-10-203I	A-4030-03A(50 I)	3
22-03-204I	A-4030-04A(102)	4	22-10-204I	A-4030-04A(50 I)	4
22-03-205I	A-4030-05A(102)	5	22-10-205I	A-4030-05A(50 I)	5
22-03-206I	A-4030-06A(102)	6	22-10-206I	A-4030-06A(50 I)	6
22-03-207I	A-4030-07A(102)	7	22-10-207I	A-4030-07A(50 I)	7
22-03-208I	A-4030-08A(102)	8	22-10-208I	A-4030-08A(50 I)	8
22-03-209I	A-4030-09A(102)	9	22-10-209I	A-4030-09A(50 I)	9
22-03-210I	A-4030-10A(102)	10	22-10-210I	A-4030-10A(50 I)	10
22-03-211I	A-4030-11A(102)	11	22-10-211I	A-4030-11A(50 I)	11
22-03-212I	A-4030-12A(102)	12	22-10-212I	A-4030-12A(50 I)	12
22-03-213I	A-4030-13A(102)	13	22-10-213I	A-4030-13A(50 I)	13
22-03-214I	A-4030-14A(102)	14	22-10-214I	A-4030-14A(50 I)	14
22-03-215I	A-4030-15A(102)	15	22-10-215I	A-4030-15A(50 I)	15
22-03-216I	A-4030-16A(102)	16	22-10-216I	A-4030-16A(50 I)	16
22-03-217I	A-4030-17A(102)	17	22-10-217I	A-4030-17A(50 I)	17
22-03-218I	A-4030-18A(102)	18	22-10-218I	A-4030-18A(50 I)	18
22-03-219I	A-4030-19A(102)	19	22-10-219I	A-4030-19A(50 I)	19
22-03-220I	A-4030-20A(102)	20	22-10-220I	A-4030-20A(50 I)	20
22-03-221I	A-4030-21A(102)	21	22-10-221I	A-4030-21A(50 I)	21
22-03-222I	A-4030-22A(102)	22	22-10-222I	A-4030-22A(50 I)	22
22-03-223I	A-4030-23A(102)	23	22-10-223I	A-4030-23A(50 I)	23
22-03-224I	A-4030-24A(102)	24	22-10-224I	A-4030-24A(50 I)	24
22-03-225I	A-4030-25A(102)	25	22-10-225I	A-4030-25A(50 I)	25
22-03-226I	A-4030-26A(102)	26	22-10-226I	A-4030-26A(50 I)	26
22-03-227I	A-4030-27A(102)	27	22-10-227I	A-4030-27A(50 I)	27
22-03-228I	A-4030-28A(102)	28	22-10-228I	A-4030-28A(50 I)	28

UPDATE TITLE BLOCK DEC NO. UCP2008-0077 2007/10/11 DRAWN BY: CHKOLSCHMIDT 2007/10/11 APPR: SMITH 2007/10/12	QUALITY SYMBOLS ▽=0 ▽=0 ▽=0	GENERAL TOLERANCES (UNLESS SPECIFIED)		DIMENSION STYLE IN/MM		SCALE ---	DESIGN UNITS INCH	THIRD ANGLE PROJECTION		
		4 PLACES ±--- ±---	3 PLACES ±--- ±---	2 PLACES ±--- ±---	1 PLACE ±--- ±---	DRAWN BY: SAMIEC	DATE: 1993/07/15	TITLE: KK HEADER (2.54)/100 CENTERS STD CATALOG PRODUCTS		
		ANGULAR ±1/2°				CHECKED BY: PATEL	DATE: 1993/07/15	APPROVED BY: LENZ		
		DRAFT WHERE APPLICABLE MUST REMAIN WITHIN DIMENSIONS				SEE CHART		MATERIAL NO. SDA-4030		SHEET NO. 2 OF 2

THIS DRAWING CONTAINS INFORMATION THAT IS PROPRIETARY TO MOLEX INCORPORATED AND SHOULD NOT BE USED WITHOUT WRITTEN PERMISSION

12 11 10 9 8 7 6 5 4 3 2 1