

**PLEASE CHECK WWW.MOLEX.COM FOR LATEST PART INFORMATION**

**Part Number:** [0022032041](#)  
**Status:** **Active**  
**Description:** 2.54mm (.100") Pitch KK® Wire-to-Board Header, Single Row, Vertical, 4 Circuits, PA Polyamide Nylon, Tin (Sn) Plating

**Documents:**

<a href="#">3D Model</a>	<a href="#">Product Specification PS-10-07 (PDF)</a>
<a href="#">Drawing (PDF)</a>	<a href="#">RoHS Certificate of Compliance (PDF)</a>
<a href="#">Packaging Specification (PDF)</a>	

**Agency Certification**

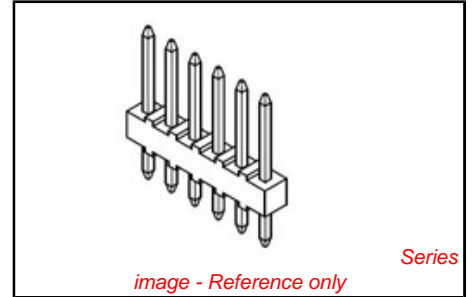
CSA	LR19980
UL	E29179

**General**

Product Family	PCB Headers
Series	4030
Application	Board-to-Board, Wire-to-Board
MolexKits	Yes
Product Name	KK®

**Physical**

Breakaway	No
Circuits (Loaded)	4
Circuits (maximum)	4
Color - Resin	Natural (White)
Durability (mating cycles max)	25
Flammability	94V-0
Glow-Wire Compliant	No
Lock to Mating Part	None
Material - Metal	Brass
Material - Plating Mating	Tin
Material - Plating Termination	Tin
Material - Resin	Nylon
Number of Rows	1
Orientation	Vertical
PC Tail Length (in)	0.135 In
PC Tail Length (mm)	3.43 mm
PCB Locator	No
PCB Retention	None
PCB Thickness Recommended (in)	0.062 In
PCB Thickness Recommended (mm)	1.60 mm
Packaging Type	Bag
Pitch - Mating Interface (in)	0.100 In
Pitch - Mating Interface (mm)	2.54 mm
Plating min: Mating (µin)	200
Plating min: Mating (µm)	5
Plating min: Termination (µin)	200
Plating min: Termination (µm)	5
Polarized to Mating Part	No
Polarized to PCB	No
Shrouded	No
Stackable	Yes
Surface Mount Compatible (SMC)	No
Temperature Range - Operating	0°C to +75°C
Termination Interface: Style	Through Hole



**EU RoHS**  
**ELV and RoHS**  
**Compliant**  
**REACH SVHC**  
 Not Reviewed  
**Halogen-Free**  
**Status**  
**Halogen-Free**

**China RoHS**



**Need more information on product environmental compliance?**

Email [productcompliance@molex.com](mailto:productcompliance@molex.com)  
 For a multiple part number RoHS Certificate of Compliance, [click here](#)

Please visit the [Contact Us](#) section for any non-product compliance questions.

**Search Parts in this Series**  
[4030Series](#)

**Mates With**  
[2695](#) , [6471](#) , [7880](#) , [4455](#) , [7720](#)

**Electrical**

Current - Maximum per Contact 4A  
Voltage - Maximum 250V

**Solder Process Data**

Duration at Max. Process Temperature (seconds) 5  
Lead-free Process Capability Wave Capable (TH only)  
Max. Cycles at Max. Process Temperature 1  
Process Temperature max. C 235

**Material Info**

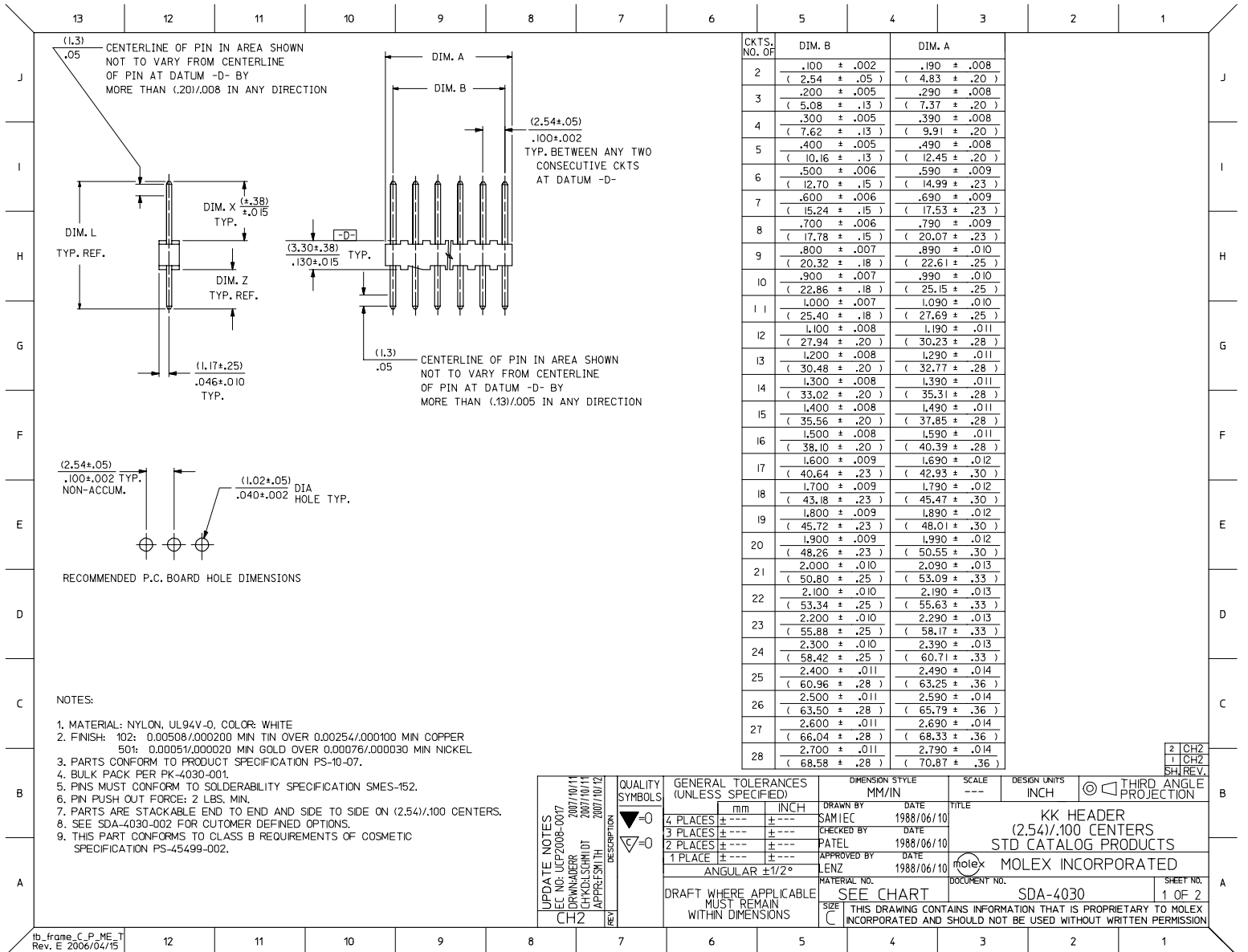
Old Part Number A-4030-04A102

**Reference - Drawing Numbers**

Packaging Specification PK-4030-001  
Product Specification PS-10-07  
Sales Drawing SDA-4030

This document was generated on 05/27/2010

**PLEASE CHECK [WWW.MOLEX.COM](http://WWW.MOLEX.COM) FOR LATEST PART INFORMATION**



CKTS. NO. OF	DIM. B	DIM. A
2	.100 ± .002 ( 2.54 ± .05 )	.190 ± .008 ( 4.83 ± .20 )
3	.200 ± .005 ( 5.08 ± .13 )	.290 ± .008 ( 7.37 ± .20 )
4	.300 ± .005 ( 7.62 ± .13 )	.390 ± .008 ( 9.91 ± .20 )
5	.400 ± .005 ( 10.16 ± .13 )	.490 ± .008 ( 12.45 ± .20 )
6	.500 ± .006 ( 12.70 ± .15 )	.590 ± .009 ( 14.99 ± .23 )
7	.600 ± .006 ( 15.24 ± .15 )	.690 ± .009 ( 17.53 ± .23 )
8	.700 ± .006 ( 17.78 ± .15 )	.790 ± .009 ( 20.07 ± .23 )
9	.800 ± .007 ( 20.32 ± .18 )	.890 ± .010 ( 22.61 ± .25 )
10	.900 ± .007 ( 22.86 ± .18 )	.990 ± .010 ( 25.15 ± .25 )
11	1.000 ± .007 ( 25.40 ± .18 )	1.090 ± .010 ( 27.69 ± .25 )
12	1.100 ± .008 ( 27.94 ± .20 )	1.190 ± .011 ( 30.23 ± .28 )
13	1.200 ± .008 ( 30.48 ± .20 )	1.290 ± .011 ( 32.77 ± .28 )
14	1.300 ± .008 ( 33.02 ± .20 )	1.390 ± .011 ( 35.31 ± .28 )
15	1.400 ± .008 ( 35.56 ± .20 )	1.490 ± .011 ( 37.85 ± .28 )
16	1.500 ± .008 ( 38.10 ± .20 )	1.590 ± .011 ( 40.39 ± .28 )
17	1.600 ± .009 ( 40.64 ± .23 )	1.690 ± .012 ( 42.93 ± .30 )
18	1.700 ± .009 ( 43.18 ± .23 )	1.790 ± .012 ( 45.47 ± .30 )
19	1.800 ± .009 ( 45.72 ± .23 )	1.890 ± .012 ( 48.01 ± .30 )
20	1.900 ± .009 ( 48.26 ± .23 )	1.990 ± .012 ( 50.55 ± .30 )
21	2.000 ± .010 ( 50.80 ± .25 )	2.090 ± .013 ( 53.09 ± .33 )
22	2.100 ± .010 ( 53.34 ± .25 )	2.190 ± .013 ( 55.63 ± .33 )
23	2.200 ± .010 ( 55.88 ± .25 )	2.290 ± .013 ( 58.17 ± .33 )
24	2.300 ± .010 ( 58.42 ± .25 )	2.390 ± .013 ( 60.71 ± .33 )
25	2.400 ± .011 ( 60.96 ± .28 )	2.490 ± .014 ( 63.25 ± .36 )
26	2.500 ± .011 ( 63.50 ± .28 )	2.590 ± .014 ( 65.79 ± .36 )
27	2.600 ± .011 ( 66.04 ± .28 )	2.690 ± .014 ( 68.33 ± .36 )
28	2.700 ± .011 ( 68.58 ± .28 )	2.790 ± .014 ( 70.87 ± .36 )

- NOTES:
1. MATERIAL: NYLON, UL94V-0, COLOR: WHITE
  2. FINISH: 102: 0.00508/0.00200 MIN TIN OVER 0.00254/0.00100 MIN COPPER  
504: 0.00051/0.00020 MIN GOLD OVER 0.00076/0.00030 MIN NICKEL
  3. PARTS CONFORM TO PRODUCT SPECIFICATION PS-10-07.
  4. BULK PACK PER PK-4030-001.
  5. PINS MUST CONFORM TO SOLDERABILITY SPECIFICATION SMES-152.
  6. PIN PUSH OUT FORCE: 2 LBS. MIN.
  7. PARTS ARE STACKABLE END TO END AND SIDE TO SIDE ON (2.54)/.100 CENTERS.
  8. SEE SDA-4030-002 FOR CUSTOMER DEFINED OPTIONS.
  9. THIS PART CONFORMS TO CLASS B REQUIREMENTS OF COSMETIC SPECIFICATION PS-45499-002.

UPDATE NOTES DEC NO: UCP2008-0017 DRAWN BY: ZORWADER 2007/10/11 CHECKED BY: CHACKSCHMIDT 2007/10/11 APPROVED BY: JEFFREY SMITH 2007/10/11	QUALITY SYMBOLS ◻=0 ◻=0	GENERAL TOLERANCES (UNLESS SPECIFIED) mm INCH		DIMENSION STYLE MM/IN		SCALE	DESIGN UNITS	THIRD ANGLE PROJECTION
		4 PLACES ± --- ± --- 3 PLACES ± --- ± --- 2 PLACES ± --- ± --- 1 PLACE ± --- ± ---	DRAWN BY: SAM IEC DATE: 1988/06/10 CHECKED BY: DATE: APPROVED BY: PATEL DATE: 1988/06/10 LENZ DATE: 1988/06/10	---	INCH	KK HEADER (2.54)/.100 CENTERS STD CATALOG PRODUCTS MOLEX INCORPORATED		
DRAFT WHERE APPLICABLE MUST REMAIN WITHIN DIMENSIONS		MATERIAL NO. SEE CHART SIZE C		DOCUMENT NO. SDA-4030		SHEET NO. 1 OF 2		THIS DRAWING CONTAINS INFORMATION THAT IS PROPRIETARY TO MOLEX INCORPORATED AND SHOULD NOT BE USED WITHOUT WRITTEN PERMISSION

13 12 11 10 9 8 7 6 5 4 3 2 1

ENG. NO.	PIN NO.	DIM. L	DIM. X	DIM. Z	PACKAGE PER	EDP NO. IN COL NO
A-4030 -NA(102)	2766 -K(102)	.560 (14,22)	.295 (7,49 )	.135 (3,43 )	PK-4030-001 BULK	1
A-4030 -NA(50 I)	2766 -K(50 I)	.560 (14,22)	.295 (7,49 )	.135 (3,43 )	PK-4030-001 BULK	2
A- -	-	( )	( )	( )		
A- -	-	( )	( )	( )		
A- -	-	( )	( )	( )		
A- -	-	( )	( )	( )		

COLUMN NO. 1			COLUMN NO. 2		
EDP NO.	ENG. NO.	NO OF SLOTS	EDP NO.	ENG. NO.	NO OF SLOTS
22-03-202I	A-4030-02A(102)	2	22-10-202I	A-4030-02A(50 I)	2
22-03-203I	A-4030-03A(102)	3	22-10-203I	A-4030-03A(50 I)	3
22-03-204I	A-4030-04A(102)	4	22-10-204I	A-4030-04A(50 I)	4
22-03-205I	A-4030-05A(102)	5	22-10-205I	A-4030-05A(50 I)	5
22-03-206I	A-4030-06A(102)	6	22-10-206I	A-4030-06A(50 I)	6
22-03-207I	A-4030-07A(102)	7	22-10-207I	A-4030-07A(50 I)	7
22-03-208I	A-4030-08A(102)	8	22-10-208I	A-4030-08A(50 I)	8
22-03-209I	A-4030-09A(102)	9	22-10-209I	A-4030-09A(50 I)	9
22-03-210I	A-4030-10A(102)	10	22-10-210I	A-4030-10A(50 I)	10
22-03-211I	A-4030-11A(102)	11	22-10-211I	A-4030-11A(50 I)	11
22-03-212I	A-4030-12A(102)	12	22-10-212I	A-4030-12A(50 I)	12
22-03-213I	A-4030-13A(102)	13	22-10-213I	A-4030-13A(50 I)	13
22-03-214I	A-4030-14A(102)	14	22-10-214I	A-4030-14A(50 I)	14
22-03-215I	A-4030-15A(102)	15	22-10-215I	A-4030-15A(50 I)	15
22-03-216I	A-4030-16A(102)	16	22-10-216I	A-4030-16A(50 I)	16
22-03-217I	A-4030-17A(102)	17	22-10-217I	A-4030-17A(50 I)	17
22-03-218I	A-4030-18A(102)	18	22-10-218I	A-4030-18A(50 I)	18
22-03-219I	A-4030-19A(102)	19	22-10-219I	A-4030-19A(50 I)	19
22-03-220I	A-4030-20A(102)	20	22-10-220I	A-4030-20A(50 I)	20
22-03-221I	A-4030-21A(102)	21	22-10-221I	A-4030-21A(50 I)	21
22-03-222I	A-4030-22A(102)	22	22-10-222I	A-4030-22A(50 I)	22
22-03-223I	A-4030-23A(102)	23	22-10-223I	A-4030-23A(50 I)	23
22-03-224I	A-4030-24A(102)	24	22-10-224I	A-4030-24A(50 I)	24
22-03-225I	A-4030-25A(102)	25	22-10-225I	A-4030-25A(50 I)	25
22-03-226I	A-4030-26A(102)	26	22-10-226I	A-4030-26A(50 I)	26
22-03-227I	A-4030-27A(102)	27	22-10-227I	A-4030-27A(50 I)	27
22-03-228I	A-4030-28A(102)	28	22-10-228I	A-4030-28A(50 I)	28

COLUMN NO. 1			COLUMN NO. 2		
EDP NO.	ENG. NO.	NO OF SLOTS	EDP NO.	ENG. NO.	NO OF SLOTS
22-03-202I	A-4030-02A(102)	2	22-10-202I	A-4030-02A(50 I)	2
22-03-203I	A-4030-03A(102)	3	22-10-203I	A-4030-03A(50 I)	3
22-03-204I	A-4030-04A(102)	4	22-10-204I	A-4030-04A(50 I)	4
22-03-205I	A-4030-05A(102)	5	22-10-205I	A-4030-05A(50 I)	5
22-03-206I	A-4030-06A(102)	6	22-10-206I	A-4030-06A(50 I)	6
22-03-207I	A-4030-07A(102)	7	22-10-207I	A-4030-07A(50 I)	7
22-03-208I	A-4030-08A(102)	8	22-10-208I	A-4030-08A(50 I)	8
22-03-209I	A-4030-09A(102)	9	22-10-209I	A-4030-09A(50 I)	9
22-03-210I	A-4030-10A(102)	10	22-10-210I	A-4030-10A(50 I)	10
22-03-211I	A-4030-11A(102)	11	22-10-211I	A-4030-11A(50 I)	11
22-03-212I	A-4030-12A(102)	12	22-10-212I	A-4030-12A(50 I)	12
22-03-213I	A-4030-13A(102)	13	22-10-213I	A-4030-13A(50 I)	13
22-03-214I	A-4030-14A(102)	14	22-10-214I	A-4030-14A(50 I)	14
22-03-215I	A-4030-15A(102)	15	22-10-215I	A-4030-15A(50 I)	15
22-03-216I	A-4030-16A(102)	16	22-10-216I	A-4030-16A(50 I)	16
22-03-217I	A-4030-17A(102)	17	22-10-217I	A-4030-17A(50 I)	17
22-03-218I	A-4030-18A(102)	18	22-10-218I	A-4030-18A(50 I)	18
22-03-219I	A-4030-19A(102)	19	22-10-219I	A-4030-19A(50 I)	19
22-03-220I	A-4030-20A(102)	20	22-10-220I	A-4030-20A(50 I)	20
22-03-221I	A-4030-21A(102)	21	22-10-221I	A-4030-21A(50 I)	21
22-03-222I	A-4030-22A(102)	22	22-10-222I	A-4030-22A(50 I)	22
22-03-223I	A-4030-23A(102)	23	22-10-223I	A-4030-23A(50 I)	23
22-03-224I	A-4030-24A(102)	24	22-10-224I	A-4030-24A(50 I)	24
22-03-225I	A-4030-25A(102)	25	22-10-225I	A-4030-25A(50 I)	25
22-03-226I	A-4030-26A(102)	26	22-10-226I	A-4030-26A(50 I)	26
22-03-227I	A-4030-27A(102)	27	22-10-227I	A-4030-27A(50 I)	27
22-03-228I	A-4030-28A(102)	28	22-10-228I	A-4030-28A(50 I)	28

<b>UPDATE TITLE BLOCK</b> DEC NO. UCP2008-0077 2007/10/11 DRAWN BY: CHKOLSCHMIDT 2007/10/11 APPR: SMITH 2007/10/12	QUALITY SYMBOLS ▽=0 ▽=0 ▽=0	GENERAL TOLERANCES (UNLESS SPECIFIED) mm INCH 4 PLACES ±--- ±--- 3 PLACES ±--- ±--- 2 PLACES ±--- ±--- 1 PLACE ±--- ±--- ANGULAR ±1/2°		DIMENSION STYLE IN/MM DRAWN BY: DATE SAMIEC 1993/07/15 CHECKED BY: DATE PATEL 1993/07/15 APPROVED BY: DATE LENZ 1993/07/15	SCALE --- INCH DESIGN UNITS INCH THIRD ANGLE PROJECTION	TITLE KK HEADER (2.54)/.100 CENTERS STD CATALOG PRODUCTS MOLEX INCORPORATED
		DRAFT WHERE APPLICABLE MUST REMAIN WITHIN DIMENSIONS		MATERIAL NO. SEE CHART	DOCUMENT NO. SDA-4030	SHEET NO. 2 OF 2
		THIS DRAWING CONTAINS INFORMATION THAT IS PROPRIETARY TO MOLEX INCORPORATED AND SHOULD NOT BE USED WITHOUT WRITTEN PERMISSION				
		SIZE C				

12 11 10 9 8 7 6 5 4 3 2 1