

PLEASE CHECK WWW.MOLEX.COM FOR LATEST PART INFORMATION

Part Number: [0022102031](#)
Status: **Active**
Description: 2.54mm (.100") Pitch KK® Wire-to-Board Header, Single Row, Vertical, 3 Circuits, PA Polyamide Nylon, Gold (Au) Plating

Documents:

3D Model	Product Specification PS-10-07 (PDF)
Packaging Specification (PDF)	RoHS Certificate of Compliance (PDF)
Drawing (PDF)	

Agency Certification

CSA	LR19980
UL	E29179

General

Product Family	PCB Headers
Series	4030
Application	Board-to-Board, Wire-to-Board
Product Name	KK®

Physical

Breakaway	No
Circuits (Loaded)	3
Circuits (maximum)	3
Color - Resin	Natural (White)
Durability (mating cycles max)	100
Flammability	94V-0
Glow-Wire Compliant	No
Lock to Mating Part	None
Material - Metal	Brass
Material - Plating Mating	Gold
Material - Plating Termination	Gold
Material - Resin	Nylon
Number of Rows	1
Orientation	Vertical
PC Tail Length (in)	0.135 In
PC Tail Length (mm)	3.43 mm
PCB Locator	No
PCB Retention	None
PCB Thickness Recommended (in)	0.062 In
PCB Thickness Recommended (mm)	1.60 mm
Packaging Type	Bag
Pitch - Mating Interface (in)	0.100 In
Pitch - Mating Interface (mm)	2.54 mm
Plating min: Mating (µin)	20
Plating min: Mating (µm)	0.5
Plating min: Termination (µin)	20
Plating min: Termination (µm)	0.5
Polarized to Mating Part	No
Polarized to PCB	No
Shrouded	No
Stackable	Yes
Surface Mount Compatible (SMC)	No
Temperature Range - Operating	0°C to +75°C
Termination Interface: Style	Through Hole

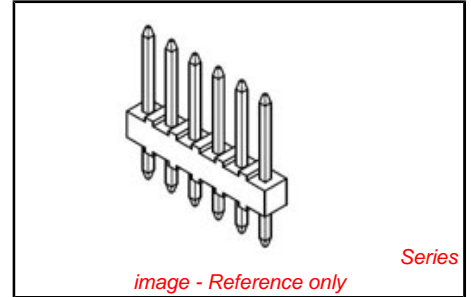


image - Reference only

EU RoHS

ELV and RoHS Compliant

REACH SVHC

Not Reviewed

Halogen-Free

Status

Halogen-Free

Need more information on product environmental compliance?

Email productcompliance@molex.com
 For a multiple part number RoHS Certificate of Compliance, [click here](#)

Please visit the [Contact Us](#) section for any non-product compliance questions.

China RoHS



Search Parts in this Series

[4030Series](#)

Mates With

[2695](#) , [6471](#) , [7880](#) , [4455](#) , [7720](#)

Electrical

Current - Maximum per Contact 4A
Voltage - Maximum 250V

Solder Process Data

Duration at Max. Process Temperature (seconds) 5
Lead-free Process Capability Wave Capable (TH only)
Max. Cycles at Max. Process Temperature 1
Process Temperature max. C 235

Material Info

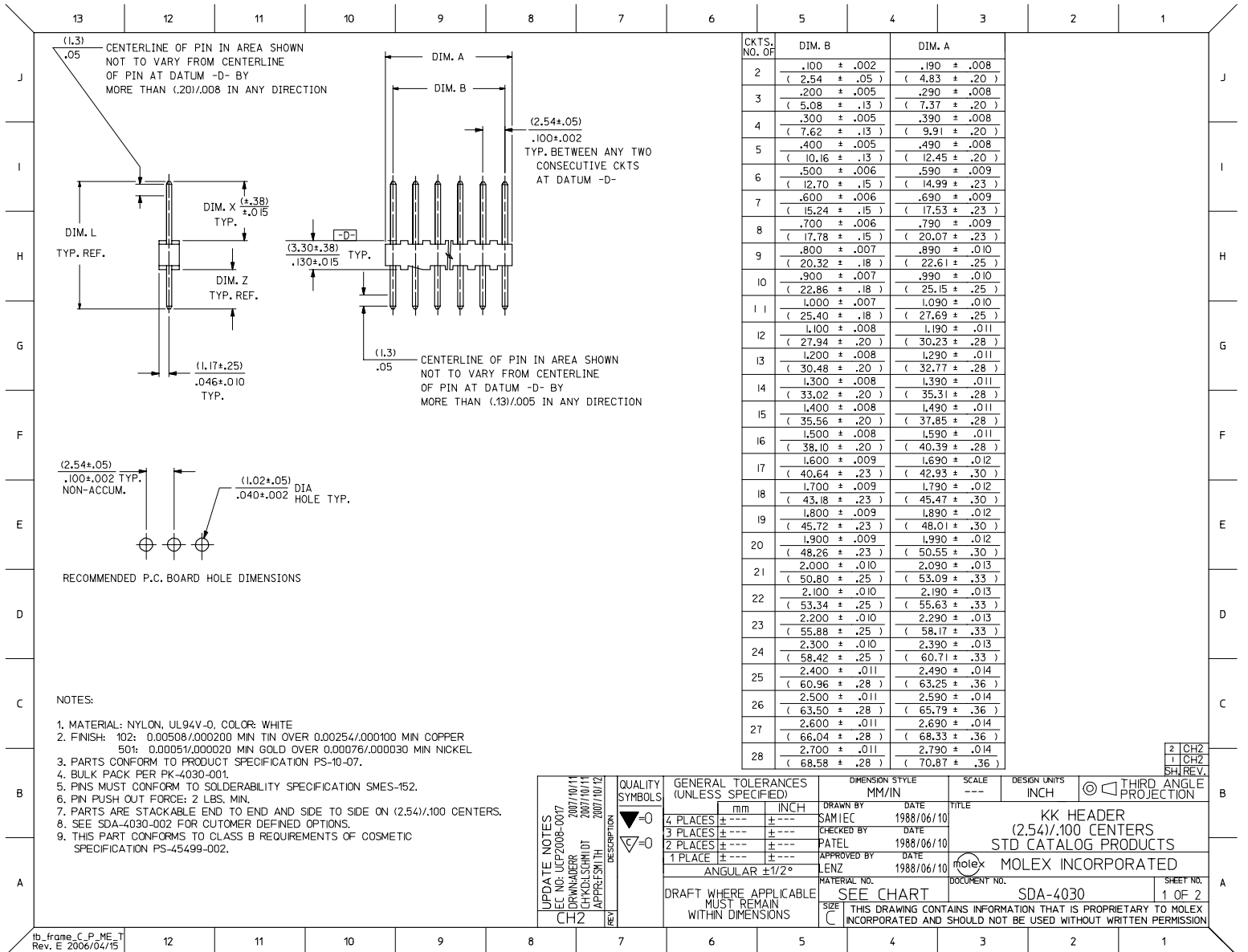
Old Part Number A-4030-03A501

Reference - Drawing Numbers

Product Specification PS-10-07
Sales Drawing SDA-4030, SDA-4030-002

This document was generated on 04/09/2010

PLEASE CHECK WWW.MOLEX.COM FOR LATEST PART INFORMATION



CKTS. NO. OF	DIM. B	DIM. A
2	.100 ± .002 (2.54 ± .05)	.190 ± .008 (4.83 ± .20)
3	.200 ± .005 (5.08 ± .13)	.290 ± .008 (7.37 ± .20)
4	.300 ± .005 (7.62 ± .13)	.390 ± .008 (9.91 ± .20)
5	.400 ± .005 (10.16 ± .13)	.490 ± .008 (12.45 ± .20)
6	.500 ± .006 (12.70 ± .15)	.590 ± .009 (14.99 ± .23)
7	.600 ± .006 (15.24 ± .15)	.690 ± .009 (17.53 ± .23)
8	.700 ± .006 (17.78 ± .15)	.790 ± .009 (20.07 ± .23)
9	.800 ± .007 (20.32 ± .18)	.890 ± .010 (22.61 ± .25)
10	.900 ± .007 (22.86 ± .18)	.990 ± .010 (25.15 ± .25)
11	1.000 ± .007 (25.40 ± .18)	1.090 ± .010 (27.69 ± .25)
12	1.100 ± .008 (27.94 ± .20)	1.190 ± .011 (30.23 ± .28)
13	1.200 ± .008 (30.48 ± .20)	1.290 ± .011 (32.77 ± .28)
14	1.300 ± .008 (33.02 ± .20)	1.390 ± .011 (35.31 ± .28)
15	1.400 ± .008 (35.56 ± .20)	1.490 ± .011 (37.85 ± .28)
16	1.500 ± .008 (38.10 ± .20)	1.590 ± .011 (40.39 ± .28)
17	1.600 ± .009 (40.64 ± .23)	1.690 ± .012 (42.93 ± .30)
18	1.700 ± .009 (43.18 ± .23)	1.790 ± .012 (45.47 ± .30)
19	1.800 ± .009 (45.72 ± .23)	1.890 ± .012 (48.01 ± .30)
20	1.900 ± .009 (48.26 ± .23)	1.990 ± .012 (50.55 ± .30)
21	2.000 ± .010 (50.80 ± .25)	2.090 ± .013 (53.09 ± .33)
22	2.100 ± .010 (53.34 ± .25)	2.190 ± .013 (55.63 ± .33)
23	2.200 ± .010 (55.88 ± .25)	2.290 ± .013 (58.17 ± .33)
24	2.300 ± .010 (58.42 ± .25)	2.390 ± .013 (60.71 ± .33)
25	2.400 ± .011 (60.96 ± .28)	2.490 ± .014 (63.25 ± .36)
26	2.500 ± .011 (63.50 ± .28)	2.590 ± .014 (65.79 ± .36)
27	2.600 ± .011 (66.04 ± .28)	2.690 ± .014 (68.33 ± .36)
28	2.700 ± .011 (68.58 ± .28)	2.790 ± .014 (70.87 ± .36)

- NOTES:
1. MATERIAL: NYLON, UL94V-0, COLOR: WHITE
 2. FINISH: 102: 0.00508/0.00200 MIN TIN OVER 0.00254/0.00100 MIN COPPER
504: 0.00051/0.00020 MIN GOLD OVER 0.00076/0.00030 MIN NICKEL
 3. PARTS CONFORM TO PRODUCT SPECIFICATION PS-10-07.
 4. BULK PACK PER PK-4030-001.
 5. PINS MUST CONFORM TO SOLDERABILITY SPECIFICATION SMES-152.
 6. PIN PUSH OUT FORCE: 2 LBS. MIN.
 7. PARTS ARE STACKABLE END TO END AND SIDE TO SIDE ON (2.54)/.100 CENTERS.
 8. SEE SDA-4030-002 FOR CUSTOMER DEFINED OPTIONS.
 9. THIS PART CONFORMS TO CLASS B REQUIREMENTS OF COSMETIC SPECIFICATION PS-45499-002.

UPDATE NOTES DEC NO: UCP2008-0017 DRAWN BY: ZORWADER 2007/10/11 CHECKED BY: CHACKSCHMIDT 2007/10/11 APPROVED BY: JEFFREY SMITH 2007/10/12	QUALITY SYMBOLS ◻=0 ◻=0	GENERAL TOLERANCES (UNLESS SPECIFIED) mm INCH		DIMENSION STYLE MM/IN		SCALE	DESIGN UNITS	THIRD ANGLE PROJECTION
		4 PLACES ± --- ± --- 3 PLACES ± --- ± --- 2 PLACES ± --- ± --- 1 PLACE ± --- ± ---	DRAWN BY: SAM IEC DATE: 1988/06/10 CHECKED BY: DATE: APPROVED BY: PATEL DATE: 1988/06/10 LENZ DATE: 1988/06/10	---	INCH	---	---	---
MATERIAL NO. SDA-4030		DRAFT WHERE APPLICABLE MUST REMAIN WITHIN DIMENSIONS		SEE CHART		MOLEX INCORPORATED		SHEET NO. 1 OF 2

13 12 11 10 9 8 7 6 5 4 3 2 1

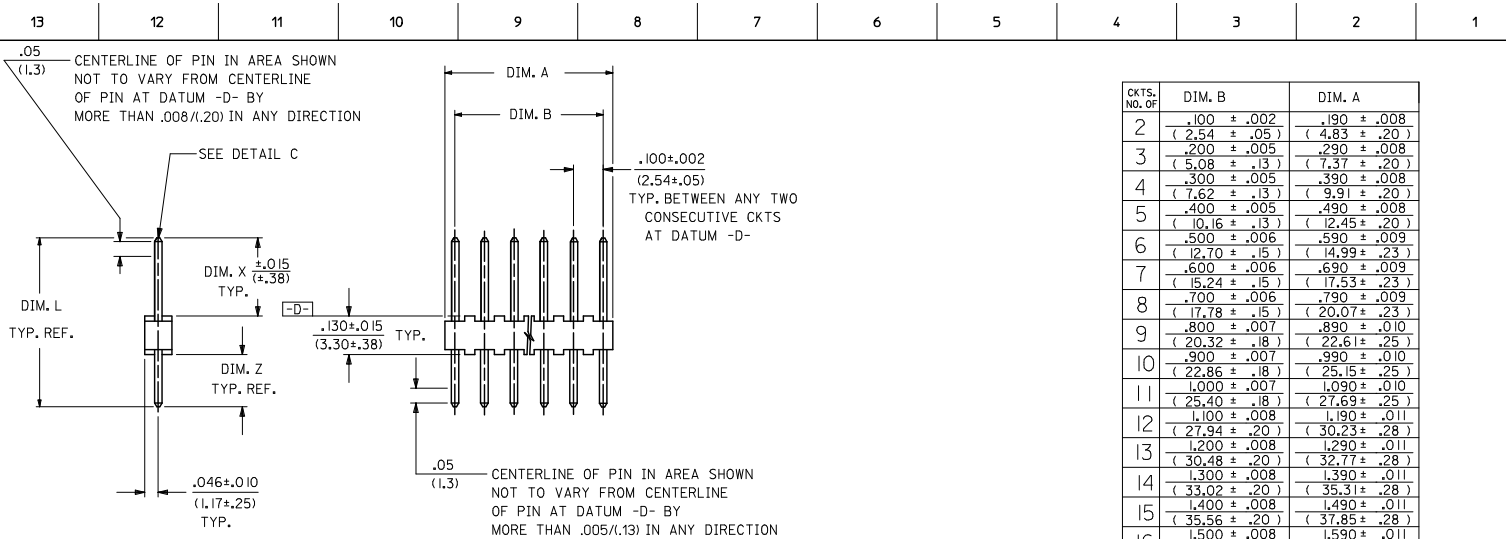
ENG. NO.	PIN NO.	DIM. L	DIM. X	DIM. Z	PACKAGE PER	EDP NO. IN COL NO
A-4030 -NA(102)	2766 -K(102)	.560 (14,22)	.295 (7,49)	.135 (3,43)	PK-4030-001 BULK	1
A-4030 -NA(50 I)	2766 -K(50 I)	.560 (14,22)	.295 (7,49)	.135 (3,43)	PK-4030-001 BULK	2
A- -	-	()	()	()		
A- -	-	()	()	()		
A- -	-	()	()	()		
A- -	-	()	()	()		

COLUMN NO. 1			COLUMN NO. 2		
EDP NO.	ENG. NO.	NO OF SLOTS	EDP NO.	ENG. NO.	NO OF SLOTS
22-03-202I	A-4030-02A(102)	2	22-10-202I	A-4030-02A(50 I)	2
22-03-203I	A-4030-03A(102)	3	22-10-203I	A-4030-03A(50 I)	3
22-03-204I	A-4030-04A(102)	4	22-10-204I	A-4030-04A(50 I)	4
22-03-205I	A-4030-05A(102)	5	22-10-205I	A-4030-05A(50 I)	5
22-03-206I	A-4030-06A(102)	6	22-10-206I	A-4030-06A(50 I)	6
22-03-207I	A-4030-07A(102)	7	22-10-207I	A-4030-07A(50 I)	7
22-03-208I	A-4030-08A(102)	8	22-10-208I	A-4030-08A(50 I)	8
22-03-209I	A-4030-09A(102)	9	22-10-209I	A-4030-09A(50 I)	9
22-03-210I	A-4030-10A(102)	10	22-10-210I	A-4030-10A(50 I)	10
22-03-211I	A-4030-11A(102)	11	22-10-211I	A-4030-11A(50 I)	11
22-03-212I	A-4030-12A(102)	12	22-10-212I	A-4030-12A(50 I)	12
22-03-213I	A-4030-13A(102)	13	22-10-213I	A-4030-13A(50 I)	13
22-03-214I	A-4030-14A(102)	14	22-10-214I	A-4030-14A(50 I)	14
22-03-215I	A-4030-15A(102)	15	22-10-215I	A-4030-15A(50 I)	15
22-03-216I	A-4030-16A(102)	16	22-10-216I	A-4030-16A(50 I)	16
22-03-217I	A-4030-17A(102)	17	22-10-217I	A-4030-17A(50 I)	17
22-03-218I	A-4030-18A(102)	18	22-10-218I	A-4030-18A(50 I)	18
22-03-219I	A-4030-19A(102)	19	22-10-219I	A-4030-19A(50 I)	19
22-03-220I	A-4030-20A(102)	20	22-10-220I	A-4030-20A(50 I)	20
22-03-221I	A-4030-21A(102)	21	22-10-221I	A-4030-21A(50 I)	21
22-03-222I	A-4030-22A(102)	22	22-10-222I	A-4030-22A(50 I)	22
22-03-223I	A-4030-23A(102)	23	22-10-223I	A-4030-23A(50 I)	23
22-03-224I	A-4030-24A(102)	24	22-10-224I	A-4030-24A(50 I)	24
22-03-225I	A-4030-25A(102)	25	22-10-225I	A-4030-25A(50 I)	25
22-03-226I	A-4030-26A(102)	26	22-10-226I	A-4030-26A(50 I)	26
22-03-227I	A-4030-27A(102)	27	22-10-227I	A-4030-27A(50 I)	27
22-03-228I	A-4030-28A(102)	28	22-10-228I	A-4030-28A(50 I)	28

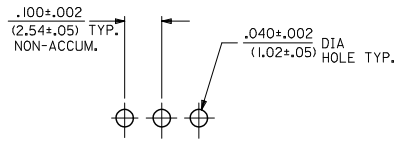
EDP NO.	ENG. NO.	NO OF SLOTS	EDP NO.	ENG. NO.	NO OF SLOTS
22-03-202I	A-4030-02A(102)	2	22-10-202I	A-4030-02A(50 I)	2
22-03-203I	A-4030-03A(102)	3	22-10-203I	A-4030-03A(50 I)	3
22-03-204I	A-4030-04A(102)	4	22-10-204I	A-4030-04A(50 I)	4
22-03-205I	A-4030-05A(102)	5	22-10-205I	A-4030-05A(50 I)	5
22-03-206I	A-4030-06A(102)	6	22-10-206I	A-4030-06A(50 I)	6
22-03-207I	A-4030-07A(102)	7	22-10-207I	A-4030-07A(50 I)	7
22-03-208I	A-4030-08A(102)	8	22-10-208I	A-4030-08A(50 I)	8
22-03-209I	A-4030-09A(102)	9	22-10-209I	A-4030-09A(50 I)	9
22-03-210I	A-4030-10A(102)	10	22-10-210I	A-4030-10A(50 I)	10
22-03-211I	A-4030-11A(102)	11	22-10-211I	A-4030-11A(50 I)	11
22-03-212I	A-4030-12A(102)	12	22-10-212I	A-4030-12A(50 I)	12
22-03-213I	A-4030-13A(102)	13	22-10-213I	A-4030-13A(50 I)	13
22-03-214I	A-4030-14A(102)	14	22-10-214I	A-4030-14A(50 I)	14
22-03-215I	A-4030-15A(102)	15	22-10-215I	A-4030-15A(50 I)	15
22-03-216I	A-4030-16A(102)	16	22-10-216I	A-4030-16A(50 I)	16
22-03-217I	A-4030-17A(102)	17	22-10-217I	A-4030-17A(50 I)	17
22-03-218I	A-4030-18A(102)	18	22-10-218I	A-4030-18A(50 I)	18
22-03-219I	A-4030-19A(102)	19	22-10-219I	A-4030-19A(50 I)	19
22-03-220I	A-4030-20A(102)	20	22-10-220I	A-4030-20A(50 I)	20
22-03-221I	A-4030-21A(102)	21	22-10-221I	A-4030-21A(50 I)	21
22-03-222I	A-4030-22A(102)	22	22-10-222I	A-4030-22A(50 I)	22
22-03-223I	A-4030-23A(102)	23	22-10-223I	A-4030-23A(50 I)	23
22-03-224I	A-4030-24A(102)	24	22-10-224I	A-4030-24A(50 I)	24
22-03-225I	A-4030-25A(102)	25	22-10-225I	A-4030-25A(50 I)	25
22-03-226I	A-4030-26A(102)	26	22-10-226I	A-4030-26A(50 I)	26
22-03-227I	A-4030-27A(102)	27	22-10-227I	A-4030-27A(50 I)	27
22-03-228I	A-4030-28A(102)	28	22-10-228I	A-4030-28A(50 I)	28

UPDATE TITLE BLOCK DEC NO. UCP2008-0077 2007/10/11 DRAWN BY: CHKOLSCHMIDT 2007/10/11 APPR: SMITH 2007/10/12	QUALITY SYMBOLS ▽=0 ▽=0 DESCRIPTION CHZ	GENERAL TOLERANCES (UNLESS SPECIFIED) mm INCH 4 PLACES ±--- ±--- 3 PLACES ±--- ±--- 2 PLACES ±--- ±--- 1 PLACE ±--- ±--- ANGULAR ±1/2°		DIMENSION STYLE IN/MM DRAWN BY: SAMIEC DATE: 1993/07/15 CHECKED BY: PATEL DATE: 1993/07/15 APPROVED BY: LENZ DATE: 1993/07/15	SCALE --- INCH DESIGN UNITS INCH THIRD ANGLE PROJECTION	TITLE KK HEADER (2.54)/.100 CENTERS STD CATALOG PRODUCTS MOLEX INCORPORATED
		DRAFT WHERE APPLICABLE MUST REMAIN WITHIN DIMENSIONS		MATERIAL NO. SEE CHART	DOCUMENT NO. SDA-4030	SHEET NO. 2 OF 2
		THIS DRAWING CONTAINS INFORMATION THAT IS PROPRIETARY TO MOLEX INCORPORATED AND SHOULD NOT BE USED WITHOUT WRITTEN PERMISSION				
		SIZE C				

12 11 10 9 8 7 6 5 4 3 2 1



CKTS. NO. OF	DIM. B	DIM. A
2	.100 ± .002 (2.54 ± .05)	.190 ± .008 (4.83 ± .20)
3	.200 ± .005 (5.08 ± .13)	.290 ± .008 (7.37 ± .20)
4	.300 ± .005 (7.62 ± .13)	.390 ± .008 (9.91 ± .20)
5	.400 ± .005 (10.16 ± .13)	.490 ± .008 (12.45 ± .20)
6	.500 ± .006 (12.70 ± .15)	.590 ± .009 (14.99 ± .23)
7	.600 ± .006 (15.24 ± .15)	.690 ± .009 (17.53 ± .23)
8	.700 ± .006 (17.78 ± .15)	.790 ± .009 (20.07 ± .23)
9	.800 ± .007 (20.32 ± .18)	.890 ± .010 (22.61 ± .25)
10	.900 ± .007 (22.86 ± .18)	.990 ± .010 (25.15 ± .25)
11	1.000 ± .007 (25.40 ± .18)	1.090 ± .010 (27.69 ± .25)
12	1.100 ± .008 (27.94 ± .20)	1.190 ± .011 (30.23 ± .28)
13	1.200 ± .008 (30.48 ± .20)	1.290 ± .011 (32.77 ± .28)
14	1.300 ± .008 (33.02 ± .20)	1.390 ± .011 (35.31 ± .28)
15	1.400 ± .008 (35.56 ± .20)	1.490 ± .011 (37.85 ± .28)
16	1.500 ± .008 (38.10 ± .20)	1.590 ± .011 (40.39 ± .28)
17	1.600 ± .009 (40.64 ± .23)	1.690 ± .012 (42.93 ± .30)
18	1.700 ± .009 (43.18 ± .23)	1.790 ± .012 (45.47 ± .30)
19	1.800 ± .009 (45.72 ± .23)	1.890 ± .012 (48.01 ± .30)
20	1.900 ± .009 (48.26 ± .23)	1.990 ± .012 (50.55 ± .30)
21	2.000 ± .010 (50.80 ± .25)	2.090 ± .013 (53.09 ± .33)
22	2.100 ± .010 (53.34 ± .25)	2.190 ± .013 (55.63 ± .33)
23	2.200 ± .010 (55.88 ± .25)	2.290 ± .013 (58.17 ± .33)
24	2.300 ± .010 (58.42 ± .25)	2.390 ± .013 (60.71 ± .33)
25	2.400 ± .011 (60.96 ± .28)	2.490 ± .014 (63.25 ± .36)
26	2.500 ± .011 (63.50 ± .28)	2.590 ± .014 (65.79 ± .36)
27	2.600 ± .011 (66.04 ± .28)	2.690 ± .014 (68.33 ± .36)
28	2.700 ± .011 (68.58 ± .28)	2.790 ± .014 (70.87 ± .36)



PCB LAYOUT: COMPONENT SIDE
TYPICAL PCB THICKNESS: .062(1.57)

A-4030-N * (*) *

NO. OF CKTS. * * *

SECONDARY OPERATIONS	
CODE	PACKAGE
BLANK	BULK PER PK-4030-001
A	TUBE PER PK-44743-002

VERSION LETTER CHANGES WHEN PIN NO. OR PRESS DIM. CHANGES.

PLATING CODE SEE NOTE 2

- NOTES:
- MATERIAL: WAFER: NYLON, UL94V-0, COLOR: WHITE
PINS: COPPER ALLOY
 - FINISH: 102: .000200/0.00508 MIN TIN OVER .000100/0.00254 MIN COPPER
132: .000200/0.00508 MIN TIN OVER .000200/0.00508 MIN COPPER
501: .000020/0.00051 MIN GOLD OVER .000030/0.00076 MIN NICKEL
503: .000030/0.00076 MIN GOLD OVER .000050/0.00127 MIN NICKEL
516: .000010/0.00025 MIN GOLD OVER .000030/0.00076 MIN NICKEL
 - PARTS CONFORM TO PRODUCT SPECIFICATION PS-10-07.
 - PACKAGING INFORMATION: SEE LEGEND
 - PINS MUST CONFORM TO SOLDERABILITY SPECIFICATION SMES-152.
 - PIN PUSH OUT FORCE: 2 LBS. MIN.
 - PARTS ARE STACKABLE END TO END AND SIDE TO SIDE ON .100(2.54) CENTERS.
 - SEE SDA-4030 FOR STANDARD CATALOG PRODUCTS.
 - THIS PART CONFORMS TO CLASS B REQUIREMENTS OF COSMETIC SPECIFICATION PS-45499-002.

ADD 22-03-5117 EC NO. UCF2010-0896 DRAWN BY: 2009/10/16 DRW: NIKKI UPPER CHECKED BY: 2009/10/20 CHK: KISSUSEK APPROVED BY: 2009/10/20 APPR: ESMLITH	QUALITY SYMBOLS ◻=0 ◻=0	GENERAL TOLERANCES (UNLESS SPECIFIED)		DIMENSION STYLE IN/MM		SCALE ---	DESIGN UNITS INCH	THIRD ANGLE PROJECTION
		4 PLACES ± --- ± --- 3 PLACES ± --- ± --- 2 PLACES ± --- ± --- 1 PLACE ± --- ± ---	mm INCH	DRAWN BY: SAMIEC DATE: 06/10/88	CHECKED BY: PATEL DATE: 06/10/88	TITLE: KK 100 HEADER FLAT CUSTOM PRODUCTS		
		ANGULAR ±1/2°		APPROVED BY: LENZ DATE: 06/10/88		MOLEX INCORPORATED		
		DRAFT WHERE APPLICABLE MUST REMAIN WITHIN DIMENSIONS		SEE CHART		MATERIAL NO. SDA-4030-002		SHEET NO. 1 OF 16
THIS DRAWING CONTAINS INFORMATION THAT IS PROPRIETARY TO MOLEX INCORPORATED AND SHOULD NOT BE USED WITHOUT WRITTEN PERMISSION								