

**PLEASE CHECK WWW.MOLEX.COM FOR LATEST PART INFORMATION**

**Part Number:** [0022102021](#)  
**Status:** **Active**  
**Description:** 2.54mm (.100") Pitch KK® Wire-to-Board Header, Single Row, Vertical, 2 Circuits, PA Polyamide Nylon, Gold (Au) Plating

**Documents:**

<a href="#">3D Model</a>	<a href="#">Product Specification PS-10-07 (PDF)</a>
<a href="#">Packaging Specification (PDF)</a>	<a href="#">RoHS Certificate of Compliance (PDF)</a>
<a href="#">Drawing (PDF)</a>	

**Agency Certification**

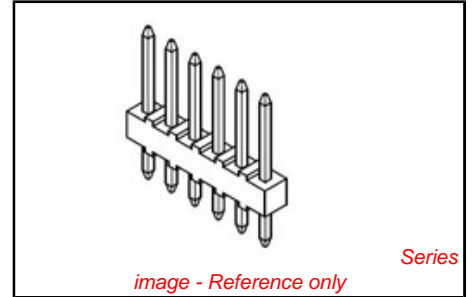
CSA	LR19980
UL	E29179

**General**

Product Family	PCB Headers
Series	4030
Application	Board-to-Board, Wire-to-Board
Product Name	KK®

**Physical**

Breakaway	No
Circuits (Loaded)	2
Circuits (maximum)	2
Color - Resin	Natural (White)
Durability (mating cycles max)	100
Flammability	94V-0
Glow-Wire Compliant	No
Lock to Mating Part	None
Material - Metal	Brass
Material - Plating Mating	Gold
Material - Plating Termination	Gold
Material - Resin	Nylon
Number of Rows	1
Orientation	Vertical
PC Tail Length (in)	0.135 In
PC Tail Length (mm)	3.43 mm
PCB Locator	No
PCB Retention	None
PCB Thickness Recommended (in)	0.062 In
PCB Thickness Recommended (mm)	1.60 mm
Packaging Type	Bag
Pitch - Mating Interface (in)	0.100 In
Pitch - Mating Interface (mm)	2.54 mm
Plating min: Mating (µin)	20
Plating min: Mating (µm)	0.5
Plating min: Termination (µin)	20
Plating min: Termination (µm)	0.5
Polarized to Mating Part	No
Polarized to PCB	No
Shrouded	No
Stackable	Yes
Surface Mount Compatible (SMC)	No
Temperature Range - Operating	0°C to +75°C
Termination Interface: Style	Through Hole



**EU RoHS**  
**ELV and RoHS**  
**Compliant**  
**REACH SVHC**  
 Not Reviewed  
**Halogen-Free**  
**Status**  
**Halogen-Free**

**China RoHS**



**Need more information on product environmental compliance?**

Email [productcompliance@molex.com](mailto:productcompliance@molex.com)  
 For a multiple part number RoHS Certificate of Compliance, [click here](#)

Please visit the [Contact Us](#) section for any non-product compliance questions.

**Search Parts in this Series**  
[4030Series](#)

**Mates With**  
[2695](#) , [6471](#) , [7880](#) , [4455](#) , [7720](#)

**Electrical**

Current - Maximum per Contact 4A  
Voltage - Maximum 250V

**Solder Process Data**

Duration at Max. Process Temperature (seconds) 5  
Lead-free Process Capability Wave Capable (TH only)  
Max. Cycles at Max. Process Temperature 1  
Process Temperature max. C 235

**Material Info**

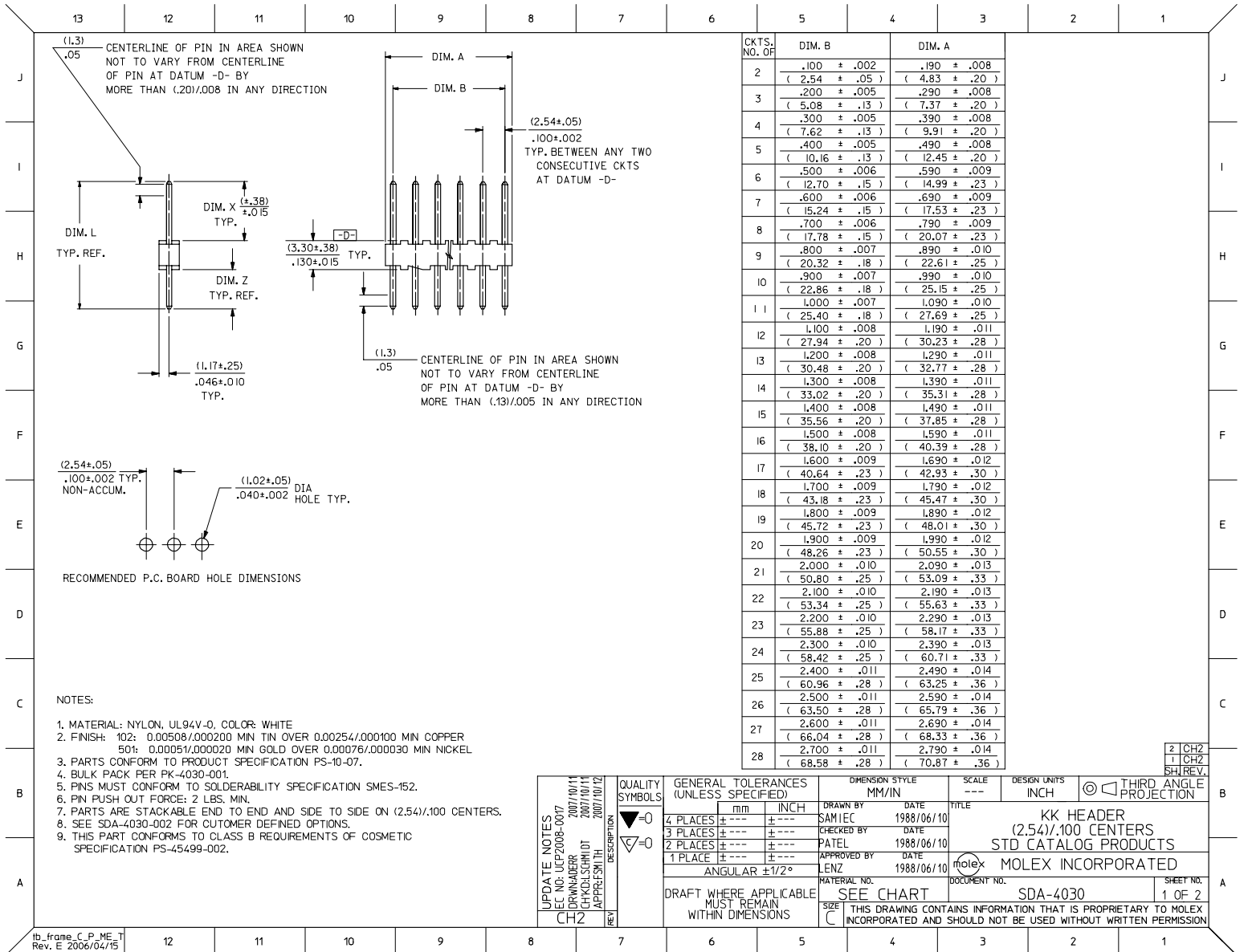
Old Part Number A-4030-02A501

**Reference - Drawing Numbers**

Product Specification PS-10-07  
Sales Drawing SDA-4030

This document was generated on 04/09/2010

**PLEASE CHECK [WWW.MOLEX.COM](http://WWW.MOLEX.COM) FOR LATEST PART INFORMATION**



<b>UPDATE NOTES</b> DEC NO: UCP2008-0017 DRAWN BY: ZORWADER 2007/10/11 CHECKED BY: CHACKSCHMIDT 2007/10/11 APPROVED BY: JAPPEL 2007/10/11	<b>QUALITY SYMBOLS</b> ◻=0 ◻=0	<b>GENERAL TOLERANCES (UNLESS SPECIFIED)</b> <table border="1"> <tr><th></th><th>mm</th><th>INCH</th></tr> <tr><td>4 PLACES</td><td>± .005</td><td>± .0002</td></tr> <tr><td>3 PLACES</td><td>± .004</td><td>± .00015</td></tr> <tr><td>2 PLACES</td><td>± .003</td><td>± .0001</td></tr> <tr><td>1 PLACE</td><td>± .002</td><td>± .00005</td></tr> </table>		mm	INCH	4 PLACES	± .005	± .0002	3 PLACES	± .004	± .00015	2 PLACES	± .003	± .0001	1 PLACE	± .002	± .00005	<b>DIMENSION STYLE</b> MM/IN	<b>SCALE</b> ---	<b>DESIGN UNITS</b> INCH	<input checked="" type="checkbox"/> THIRD ANGLE PROJECTION
				mm	INCH																
4 PLACES	± .005	± .0002																			
3 PLACES	± .004	± .00015																			
2 PLACES	± .003	± .0001																			
1 PLACE	± .002	± .00005																			
<b>DRAFT WHERE APPLICABLE MUST REMAIN WITHIN DIMENSIONS</b>	<b>DRAWN BY</b> SAMIEC <b>DATE</b> 1988/06/10	<b>CHECKED BY</b> PATEL <b>DATE</b> 1988/06/10	<b>APPROVED BY</b> LENZ <b>DATE</b> 1988/06/10	<b>TITLE</b> KK HEADER (.254)/.100 CENTERS STD CATALOG PRODUCTS	<b>MOLEX</b> MOLEX INCORPORATED	<b>SHEET NO.</b> 1 OF 2															

13 12 11 10 9 8 7 6 5 4 3 2 1

ENG. NO.	PIN NO.	DIM. L	DIM. X	DIM. Z	PACKAGE PER	EDP NO. IN COL NO
A-4030 -NA(102)	2766 -K(102)	.560 (14,22)	.295 (7,49 )	.135 (3,43 )	PK-4030-001 BULK	1
A-4030 -NA(50 I)	2766 -K(50 I)	.560 (14,22)	.295 (7,49 )	.135 (3,43 )	PK-4030-001 BULK	2
A- -	-	( )	( )	( )		
A- -	-	( )	( )	( )		
A- -	-	( )	( )	( )		
A- -	-	( )	( )	( )		

COLUMN NO. 1			COLUMN NO. 2		
EDP NO.	ENG. NO.	NO OF SLOTS	EDP NO.	ENG. NO.	NO OF SLOTS
22-03-202I	A-4030-02A(102)	2	22-10-202I	A-4030-02A(50 I)	2
22-03-203I	A-4030-03A(102)	3	22-10-203I	A-4030-03A(50 I)	3
22-03-204I	A-4030-04A(102)	4	22-10-204I	A-4030-04A(50 I)	4
22-03-205I	A-4030-05A(102)	5	22-10-205I	A-4030-05A(50 I)	5
22-03-206I	A-4030-06A(102)	6	22-10-206I	A-4030-06A(50 I)	6
22-03-207I	A-4030-07A(102)	7	22-10-207I	A-4030-07A(50 I)	7
22-03-208I	A-4030-08A(102)	8	22-10-208I	A-4030-08A(50 I)	8
22-03-209I	A-4030-09A(102)	9	22-10-209I	A-4030-09A(50 I)	9
22-03-210I	A-4030-10A(102)	10	22-10-210I	A-4030-10A(50 I)	10
22-03-211I	A-4030-11A(102)	11	22-10-211I	A-4030-11A(50 I)	11
22-03-212I	A-4030-12A(102)	12	22-10-212I	A-4030-12A(50 I)	12
22-03-213I	A-4030-13A(102)	13	22-10-213I	A-4030-13A(50 I)	13
22-03-214I	A-4030-14A(102)	14	22-10-214I	A-4030-14A(50 I)	14
22-03-215I	A-4030-15A(102)	15	22-10-215I	A-4030-15A(50 I)	15
22-03-216I	A-4030-16A(102)	16	22-10-216I	A-4030-16A(50 I)	16
22-03-217I	A-4030-17A(102)	17	22-10-217I	A-4030-17A(50 I)	17
22-03-218I	A-4030-18A(102)	18	22-10-218I	A-4030-18A(50 I)	18
22-03-219I	A-4030-19A(102)	19	22-10-219I	A-4030-19A(50 I)	19
22-03-220I	A-4030-20A(102)	20	22-10-220I	A-4030-20A(50 I)	20
22-03-221I	A-4030-21A(102)	21	22-10-221I	A-4030-21A(50 I)	21
22-03-222I	A-4030-22A(102)	22	22-10-222I	A-4030-22A(50 I)	22
22-03-223I	A-4030-23A(102)	23	22-10-223I	A-4030-23A(50 I)	23
22-03-224I	A-4030-24A(102)	24	22-10-224I	A-4030-24A(50 I)	24
22-03-225I	A-4030-25A(102)	25	22-10-225I	A-4030-25A(50 I)	25
22-03-226I	A-4030-26A(102)	26	22-10-226I	A-4030-26A(50 I)	26
22-03-227I	A-4030-27A(102)	27	22-10-227I	A-4030-27A(50 I)	27
22-03-228I	A-4030-28A(102)	28	22-10-228I	A-4030-28A(50 I)	28

EDP NO.	ENG. NO.	NO OF SLOTS	EDP NO.	ENG. NO.	NO OF SLOTS
22-03-202I	A-4030-02A(102)	2	22-10-202I	A-4030-02A(50 I)	2
22-03-203I	A-4030-03A(102)	3	22-10-203I	A-4030-03A(50 I)	3
22-03-204I	A-4030-04A(102)	4	22-10-204I	A-4030-04A(50 I)	4
22-03-205I	A-4030-05A(102)	5	22-10-205I	A-4030-05A(50 I)	5
22-03-206I	A-4030-06A(102)	6	22-10-206I	A-4030-06A(50 I)	6
22-03-207I	A-4030-07A(102)	7	22-10-207I	A-4030-07A(50 I)	7
22-03-208I	A-4030-08A(102)	8	22-10-208I	A-4030-08A(50 I)	8
22-03-209I	A-4030-09A(102)	9	22-10-209I	A-4030-09A(50 I)	9
22-03-210I	A-4030-10A(102)	10	22-10-210I	A-4030-10A(50 I)	10
22-03-211I	A-4030-11A(102)	11	22-10-211I	A-4030-11A(50 I)	11
22-03-212I	A-4030-12A(102)	12	22-10-212I	A-4030-12A(50 I)	12
22-03-213I	A-4030-13A(102)	13	22-10-213I	A-4030-13A(50 I)	13
22-03-214I	A-4030-14A(102)	14	22-10-214I	A-4030-14A(50 I)	14
22-03-215I	A-4030-15A(102)	15	22-10-215I	A-4030-15A(50 I)	15
22-03-216I	A-4030-16A(102)	16	22-10-216I	A-4030-16A(50 I)	16
22-03-217I	A-4030-17A(102)	17	22-10-217I	A-4030-17A(50 I)	17
22-03-218I	A-4030-18A(102)	18	22-10-218I	A-4030-18A(50 I)	18
22-03-219I	A-4030-19A(102)	19	22-10-219I	A-4030-19A(50 I)	19
22-03-220I	A-4030-20A(102)	20	22-10-220I	A-4030-20A(50 I)	20
22-03-221I	A-4030-21A(102)	21	22-10-221I	A-4030-21A(50 I)	21
22-03-222I	A-4030-22A(102)	22	22-10-222I	A-4030-22A(50 I)	22
22-03-223I	A-4030-23A(102)	23	22-10-223I	A-4030-23A(50 I)	23
22-03-224I	A-4030-24A(102)	24	22-10-224I	A-4030-24A(50 I)	24
22-03-225I	A-4030-25A(102)	25	22-10-225I	A-4030-25A(50 I)	25
22-03-226I	A-4030-26A(102)	26	22-10-226I	A-4030-26A(50 I)	26
22-03-227I	A-4030-27A(102)	27	22-10-227I	A-4030-27A(50 I)	27
22-03-228I	A-4030-28A(102)	28	22-10-228I	A-4030-28A(50 I)	28

<b>UPDATE TITLE BLOCK</b> DEC NO. UCP2008-0077 2007/10/11 DRAWN BY: CHKOLSCHMIDT 2007/10/11 APPR: SMITH 2007/10/12	QUALITY SYMBOLS ▽=0 ▽=0	GENERAL TOLERANCES (UNLESS SPECIFIED)		DIMENSION STYLE IN/MM		SCALE --- INCH	DESIGN UNITS INCH	THIRD ANGLE PROJECTION	
		4 PLACES ±--- ±---	mm	INCH	DRAWN BY	DATE	TITLE KK HEADER (2.54)/.100 CENTERS STD CATALOG PRODUCTS		
		3 PLACES ±--- ±---			CHECKED BY	DATE	MOLEX INCORPORATED		
		2 PLACES ±--- ±---			APPROVED BY	DATE	MATERIAL NO. SDA-4030		
1 PLACE ±--- ±---			LENZ	1993/07/15	DOCUMENT NO.		SHEET NO. 2 OF 2		
DRAFT WHERE APPLICABLE MUST REMAIN WITHIN DIMENSIONS		SEE CHART		THIS DRAWING CONTAINS INFORMATION THAT IS PROPRIETARY TO MOLEX INCORPORATED AND SHOULD NOT BE USED WITHOUT WRITTEN PERMISSION					

12 11 10 9 8 7 6 5 4 3 2 1