



# TAI-SAW TECHNOLOGY CO., LTD.

No. 3, Industrial 2nd Rd., Ping-Chen Industrial District,  
Taoyuan, 324, Taiwan, R.O.C.

TEL: 886-3-4690038 FAX: 886-3-4697532

E-mail: [tstsales@mail.taisaw.com](mailto:tstsales@mail.taisaw.com) Web: [www.taisaw.com](http://www.taisaw.com)

## Approval Sheet For Product Specification

Issued Date: May, 8, 2007

Product Name: SAW Filter 70 MHz SMD 13.3x6.5 mm

TST Parts No.:TB0505A

Customer Parts No.: \_\_\_\_\_

Company: _____
Division: _____
Approved by : _____
Date: _____

Checked by: \_\_\_\_\_ Bob Chau

Approval by: \_\_\_\_\_ Francis Chen

Date: \_\_\_\_\_ 5, 8, 2007



# TAI-SAW TECHNOLOGY CO., LTD.

No. 3, Industrial 2nd Rd., Ping-Chen Industrial District,  
Taoyuan, 324, Taiwan, R.O.C.

TEL: 886-3-4690038 FAX: 886-3-4697532

E-mail: [tstsales@mail.taisaw.com](mailto:tstsales@mail.taisaw.com) Web: [www.taisaw.com](http://www.taisaw.com)

## SAW Filter 70 MHz

MODEL NO.:TB0505A

REV. NO.:1

### A. MAXIMUM RATING:

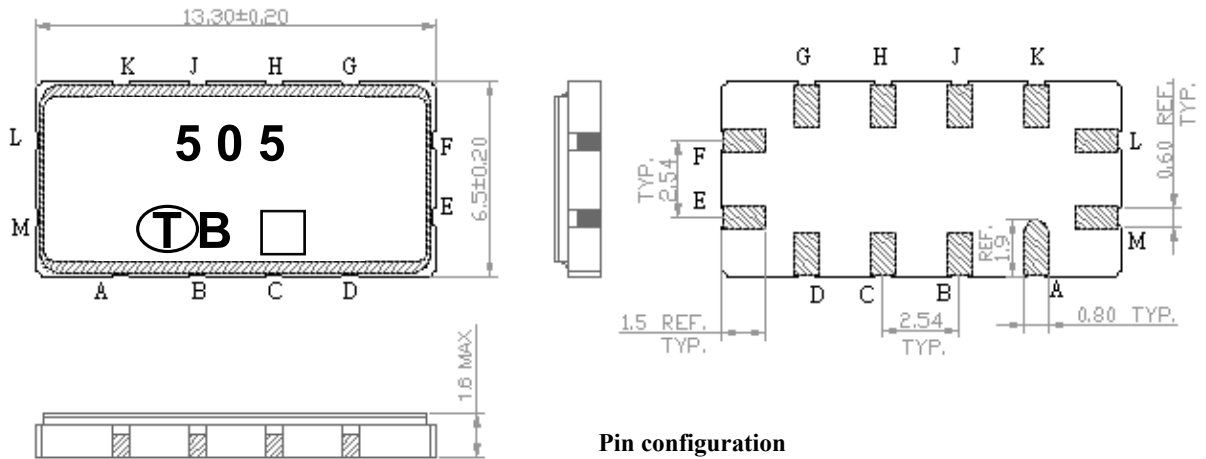
1. Input Power Level: 10 dBm
2. DC Voltage : 5V
3. Operating Temperature: -10°C to 60°C
4. Storage Temperature: -40°C to 85°C

RoHS Compliant  
Lead free  
Lead-free soldering

### B. ELECTRICAL CHARACTERISTICS: (Ambient temperature : 25 °C)

Item	Unit	Min.	Type.	Max.	Note
Center frequency, <b>F<sub>c</sub></b>	MHz	69.955	70	70.044	-
Insertion Loss, <b>IL</b>	dB	-	3.2	6	-
3dB bandwidth	dB	0.03	0.05	-	-
40dB bandwidth	dB	-	0.14	0.2	-
Absolute Group Delay at <b>F<sub>c</sub></b>	μs	-	16	-	-
Group Delay Variation (70±0.015 MHz)	μs	-	6	12	-
Attenuation:(Reference level from Min IL)					
0.3 MHz ~ 69.8 MHz	dB	48	58	-	-
70.2 MHz ~ 71 MHz	dB	35	43	-	-
71 MHz ~ 71.5 MHz	dB	35	45	-	-
71.5 MHz ~ 75 MHz	dB	45	48	-	-
Temperature coefficient of frequency	<b>TCF</b>	-0.032 ppm/C <sup>2</sup>			

### C.OUTLINE DRAWING:

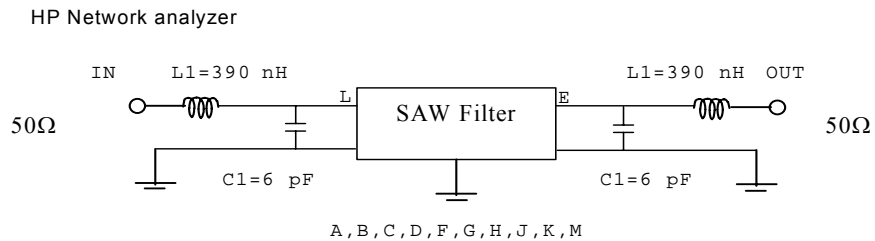


#### Pin configuration

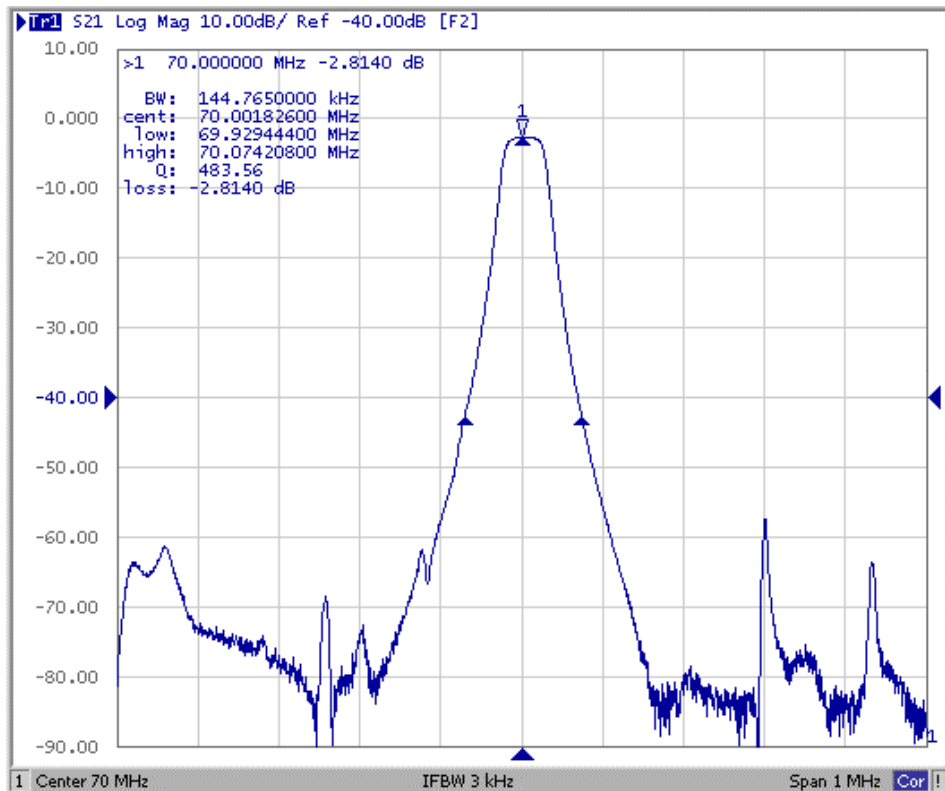
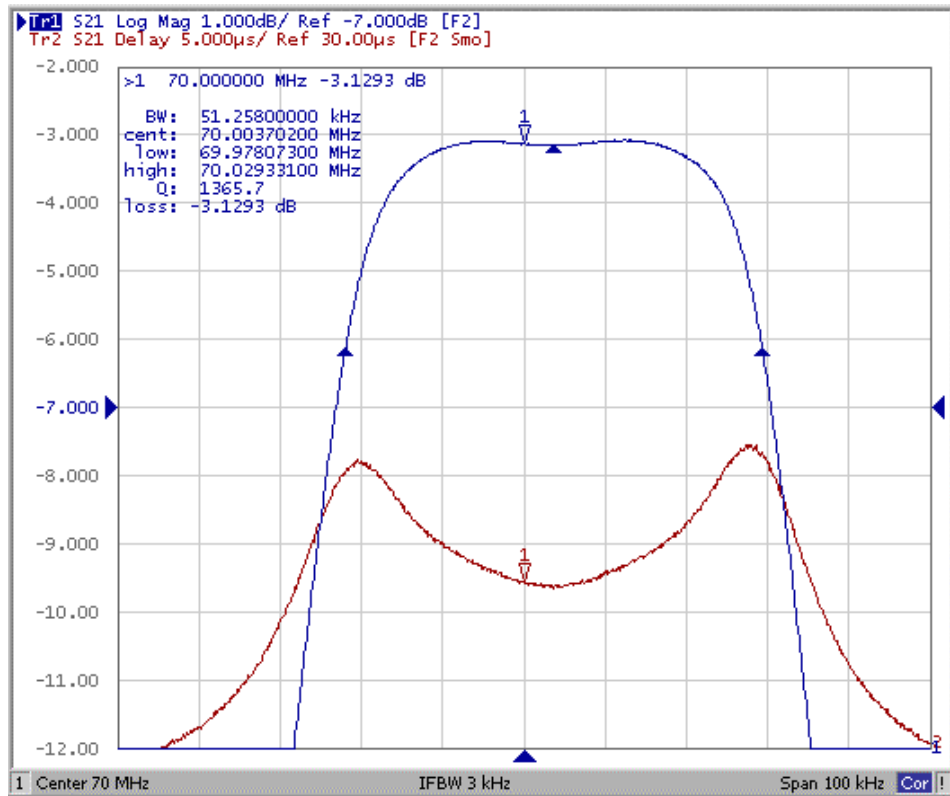
- #L Input
- #M Input RF-Return
- #E Output
- #F Output RF-Return
- #A,B,C,D,G,H,J,K To be grounded
- Date code
- Unit mm

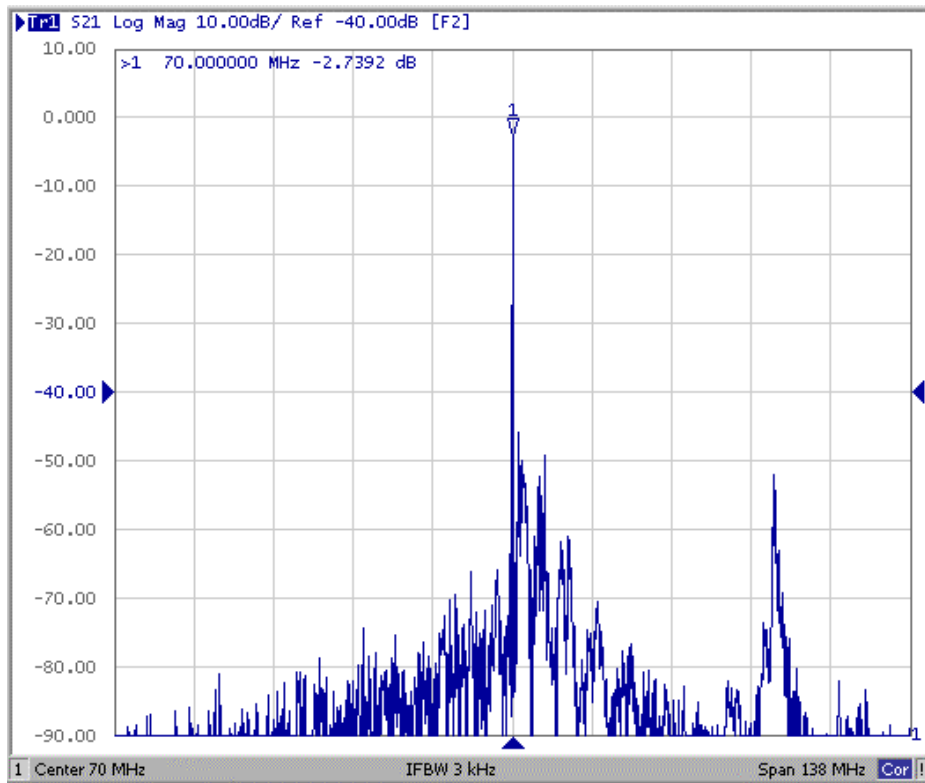
### D. MEASUREMENT CIRCUIT:

#### 50 Ohm Test circuit ( single-ended / single-ended )

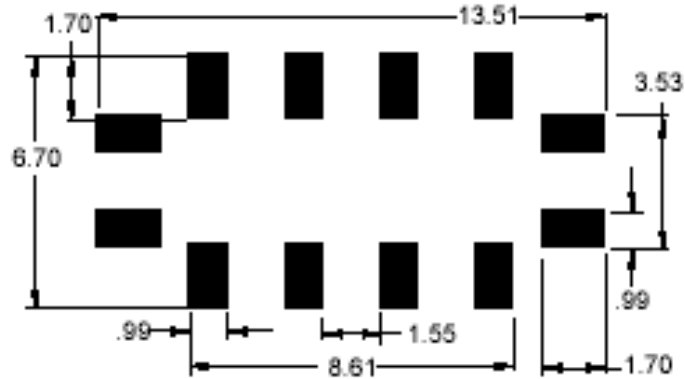


## E. Frequency Characteristics :



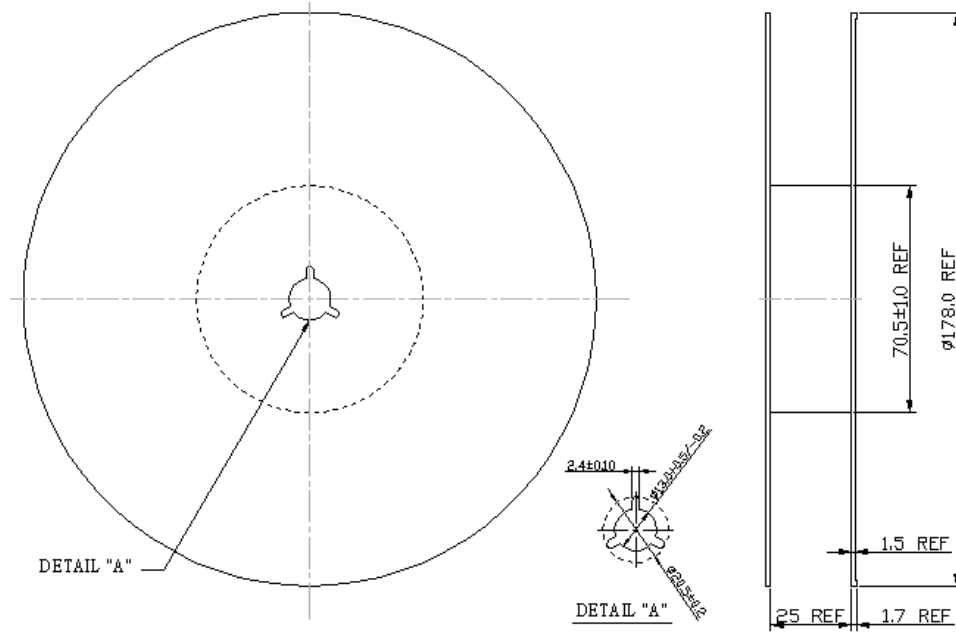


**F. PCB Footprint:**

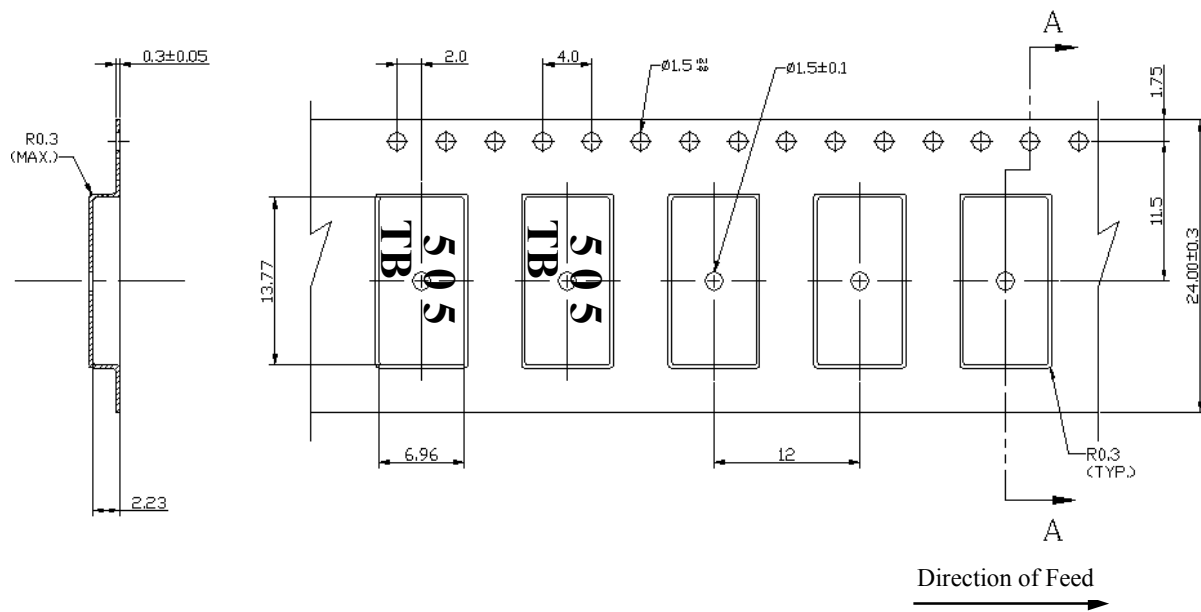


**G. PACKING:**

**1. REEL DIMENSION**



**2. TAPE DIMENSION**



**H. RECOMMENDED REFLOW PROFILE :**

