



# TAI-SAW TECHNOLOGY CO., LTD.

No. 3, Industrial 2nd Rd., Ping-Chen Industrial District,  
Taoyuan, 324, Taiwan, R.O.C.

TEL: 886-3-4690038 FAX: 886-3-4697532

E-mail: [ttsales@mail.taisaw.com](mailto:ttsales@mail.taisaw.com) Web: [www.taisaw.com](http://www.taisaw.com)

## Approval Sheet For Product Specification

Issued Date:

Product Name: IF SAW Filter 64.8 MHz (SMD 13.3mmX6.5mm)

TST Parts No.:TB0395A

Customer Parts No.: \_\_\_\_\_

Company: _____
Division: _____
Approved by : _____
Date: _____

Checked by: \_\_\_\_\_ Andy Lee

Approval by: \_\_\_\_\_ Francis Chen

Date: \_\_\_\_\_ 2008/1/28



# TAI-SAW TECHNOLOGY CO., LTD.

No. 3, Industrial 2nd Rd., Ping-Chen Industrial District,  
Taoyuan, 324, Taiwan, R.O.C.

TEL: 886-3-4690038 FAX: 886-3-4697532

E-mail: [tstsales@mail.taisaw.com](mailto:tstsales@mail.taisaw.com) Web: [www.taisaw.com](http://www.taisaw.com)

## IF SAW Filter 64.8 MHz SMD 13.3mmX6.5mm

MODEL NO.: TB0395A

Rev. No. 2

### A. MAXIMUM RATING:

1. Operating Temperature: -30 °C ~ +60 °C
2. Storage Temperature: -40 °C ~ +85 °C
3. Input Power Level: 10dBm

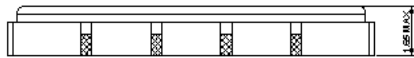
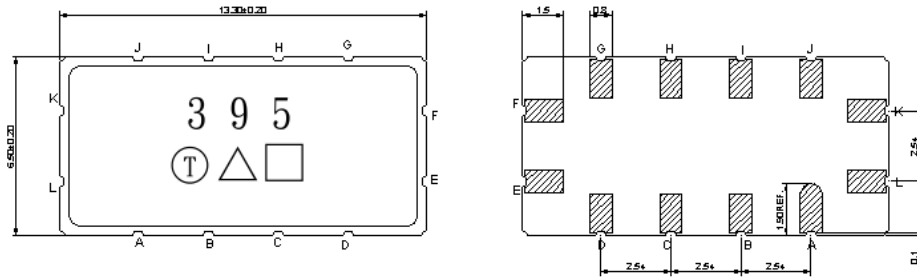
RoHS Compliant  
Lead free  
Lead-free soldering

### B. Characteristics :

1. Ambient Temperature: 25 °

Characteristics	Value			Note.
	Min.		Max.	
Center frequency $F_C$ MHz	-	64.8	-	-
Maximum Insertion loss I.L. dB	-	8.41	13.0	-
1dB Bandwidth MHz	8.40	9.27	-	-
3dB Bandwidth MHz	9.00	10.25	-	-
35dB Bandwidth MHz	-	13.08	14.00	-
Passband Ripple ( $F_C \pm 4.2\text{MHz}$ ) MHz	-	0.66	1.00	-
Group Delay Ripple ( $F_C \pm 4.2\text{MHz}$ ) nS	-	120	-	-
Group Delay at $F_C$ uS	-	0.90	1.00	-
Phase linearity at any 200kHz B P-P Deg	-	2.0	5.0	-
Temp Coefficient ppm/°C	-	-94	-	-
Attenuation:( Reference level from minimum insertion loss)				
1) 10 ~ 57 MHz dB	30	36	-	-
2) 57.6 MHz dB	35	40	-	-
2) 73 ~ 90 MHz dB	30	34	-	-
2) 90 ~ 100 MHz dB	40	49	-	-
) 100 ~ 140 MHz dB	40	49	-	-

### C.OUTLINE DRAWING:



#### Pin configuration

#K RF Input

#L RF Input ground

#E RF Output

#F RF Output ground

#A,B,C,D,G,H,I,J To be ground

□ : Week Code (Follow the table from planner each year)

Unit : mm

△ : Product / Year Code

Year	2005 2009	2006 2010	2007 2011	2008 2012
Product Code	B	b	<u>B</u>	<u>b</u>

## D. Frequency Characteristics :

### 1. S21 Response

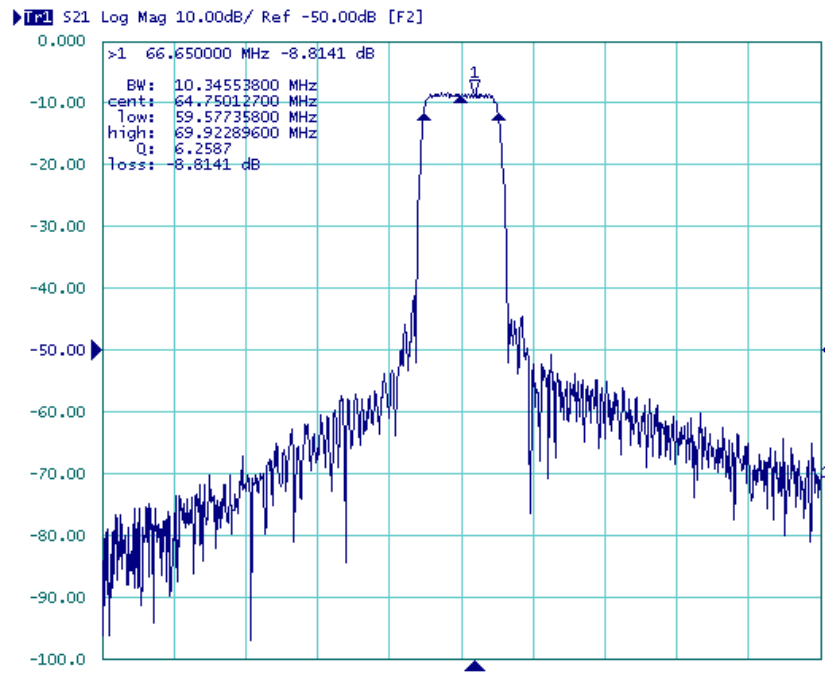


Fig1. Horizontal: 100MHz/Div Vertical: 10dB/Div

### 2. Pass band Ripple and Group Delay Ripple

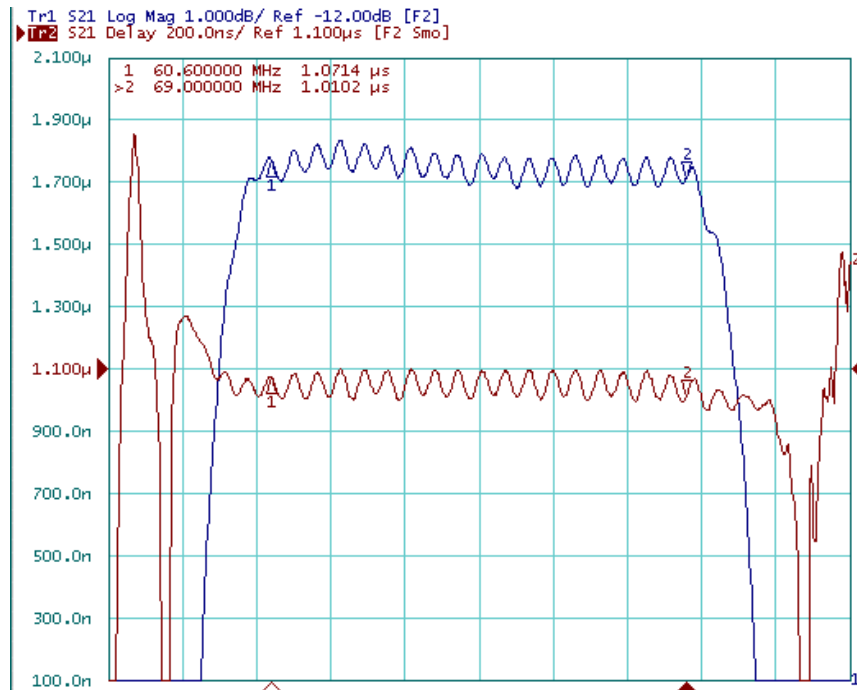
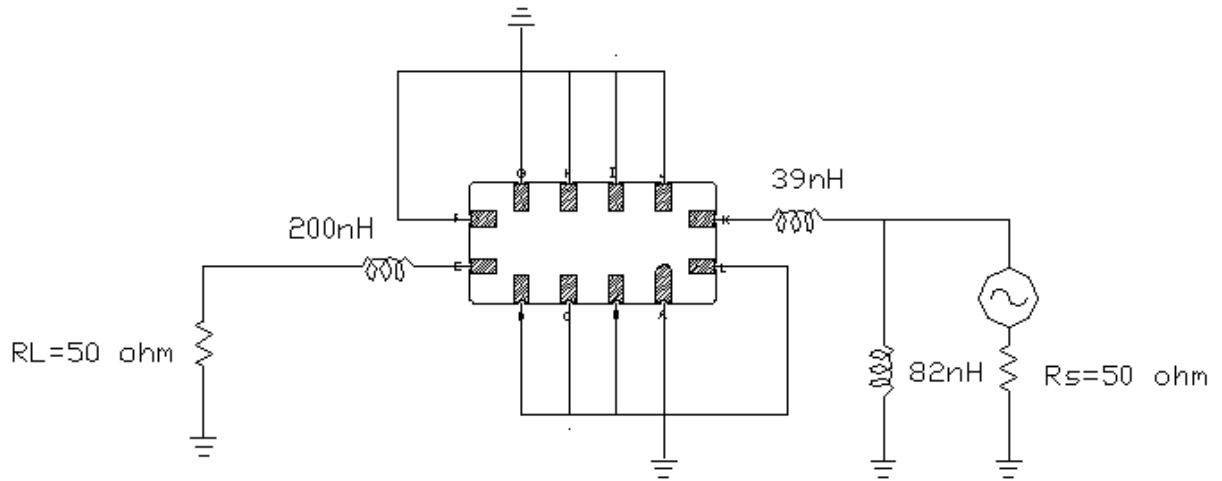
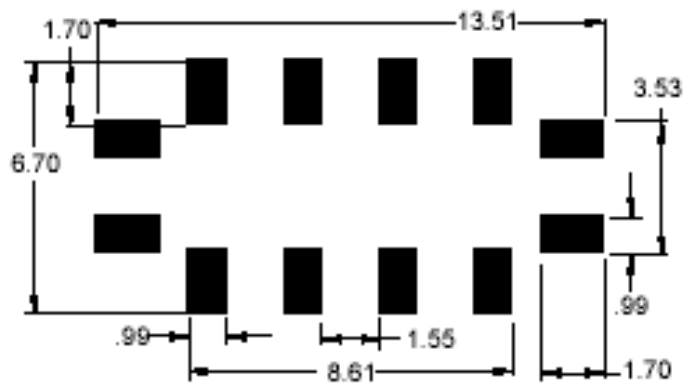


Fig2. Horizontal: 1.5MHz/Div; Vertical: 1dB/Div,  
Vertical: 200nS/Div,

**E. TEST FIXTURE :**

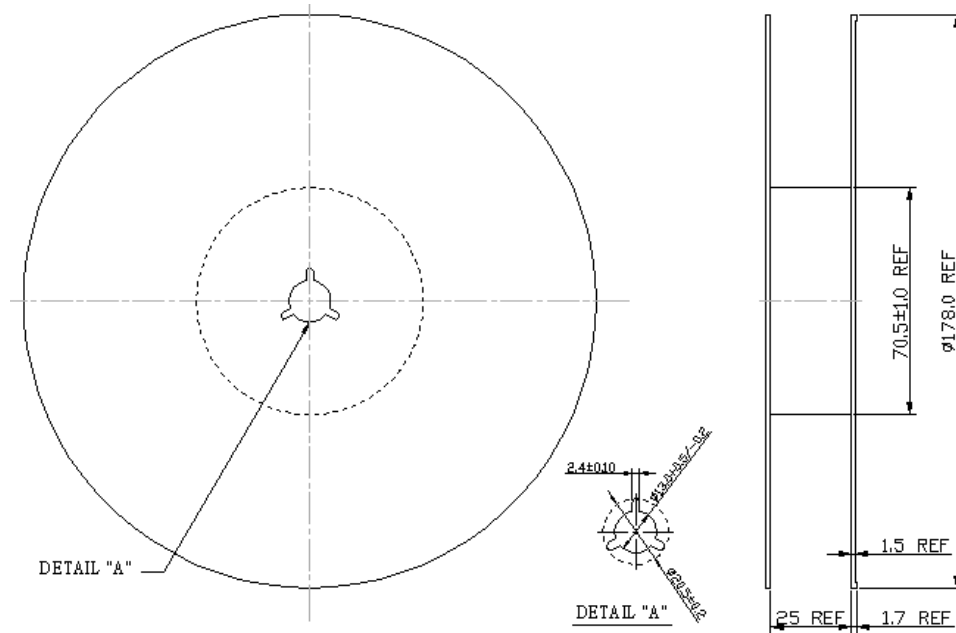


**F. PCB FOOTPRINT**

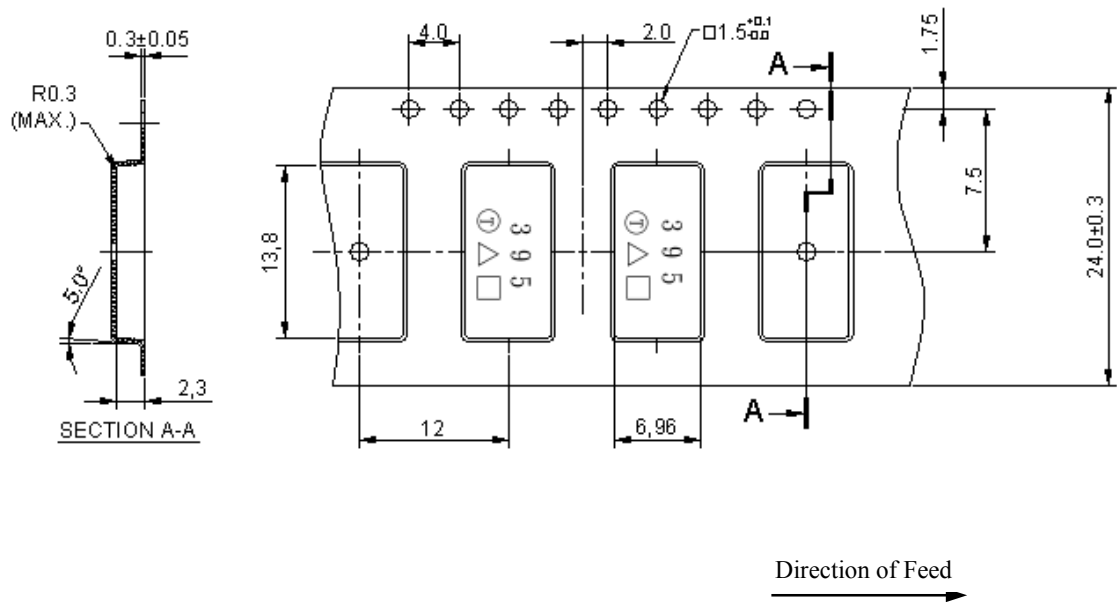


## G. PACKING:

### 1. REEL DIMENSION



### 2. TAPE DIMENSION



## H. RECOMMENDED REFLOW PROFILE\_:

