



# TAI-SAW TECHNOLOGY CO., LTD.

No. 3, Industrial 2nd Rd., Ping-Chen Industrial District,  
Taoyuan, 324, Taiwan, R.O.C.

TEL: 886-3-4690038 FAX: 886-3-4697532

E-mail: [ttsales@mail.taisaw.com](mailto:ttsales@mail.taisaw.com) Web: [www.taisaw.com](http://www.taisaw.com)

## Approval Sheet For Product Specification

Issued Date:

Product Name: IF SAW Filter 35.46 MHz (SMD 13.3mmX6.5mm)

TST Parts No.:TB0386A

Customer Parts No.: \_\_\_\_\_

Company: _____
Division: _____
Approved by : _____
Date: _____

Checked by: \_\_\_\_\_ Andy Lee

Approval by: \_\_\_\_\_ Francis Chen

Date: \_\_\_\_\_ 2006/11/01



# TAI-SAW TECHNOLOGY CO., LTD.

No. 3, Industrial 2nd Rd., Ping-Chen Industrial District,  
Taoyuan, 324, Taiwan, R.O.C.

TEL: 886-3-4690038 FAX: 886-3-4697532

E-mail: [tstsales@mail.taisaw.com](mailto:tstsales@mail.taisaw.com) Web: [www.taisaw.com](http://www.taisaw.com)

## IF SAW Filter 35.46 MHz SMD 13.3mmX6.5mm

MODEL NO.: TB0386A

REV. NO. 1

### A. MAXIMUM RATING:

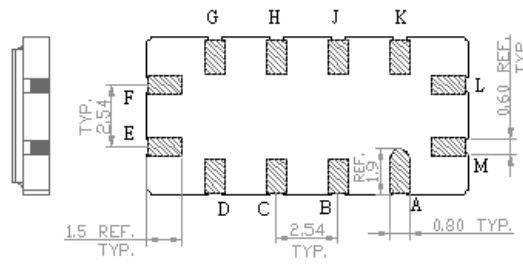
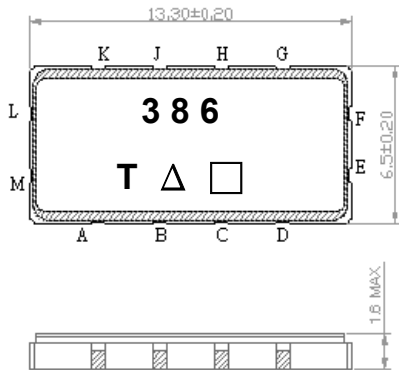
1. Operating Temperature: -40 °C ~ +85 °C
3. Storage Temperature: -40 °C ~ +85 °C

### B. Characteristics :

1. Ambient Temperature: 25 °

Characteristics		Value			Note.
		Min.		Max.	
Center frequency	$F_C$ MHz	-	35.46	-	-
Maximum Insertion loss	I.L. dB	-	17.4	20.0	-
1dB Bandwidth	MHz	-	8.82		
21dB Bandwidth	MHz	-	10.8	11.4	
30dB Bandwidth	MHz	-	11.4	12.0	
Passband Ripple ( $F_C \pm 4$ MHz)	dB	-	0.9	1.6	-
Group Delay Ripple ( $F_C \pm 4$ MHz)	nS	-	180	300	-
Temp Coefficient	ppm/°C		-87		
Attenuation:( Reference level from minimum insertion loss)					
1)	DC~ 28 MHz	dB	35	50	-
2)	28MHz ~ 29.46 MHz	dB	30	46	-
3)	29.46MHz ~ 29.72 MHz	dB	21	51	
4)	41.46MHz ~ 45.00 MHz	dB	15	29	
5)	45MHz ~ 50 MHz	dB	35	40	
5)	50MHz ~ 110 MHz	dB	15	26	

### C.OUTLINE DRAWING:



#### Pin configuration

#L RF Input +

#M RF Input -

#E RF Output +

#F RF Output -

#A,B,C,D,G,H,J,K To be ground

□ : Week Code (Follow the table from planner each year)

Unit : mm

△ : Product / Year Code

Year	2005 2009	2006 2010	2007 2011	2008 2012
Product Code	B	b	<u>B</u>	<u>b</u>

## D. Frequency Characteristics :

### 1. S21 Response

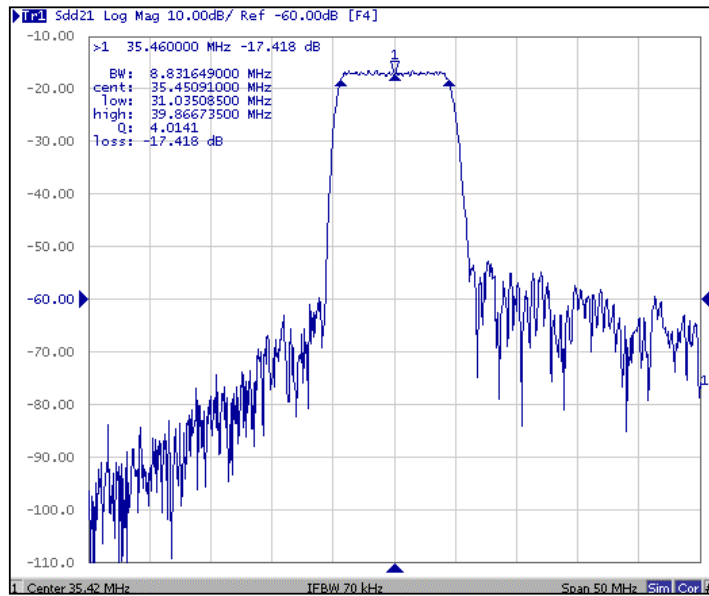


Fig-1 S21 Response Horizontal: 5MHz/Div Vertical: 10dB/Div

### 2. Pass band Ripple and Group Delay Ripple

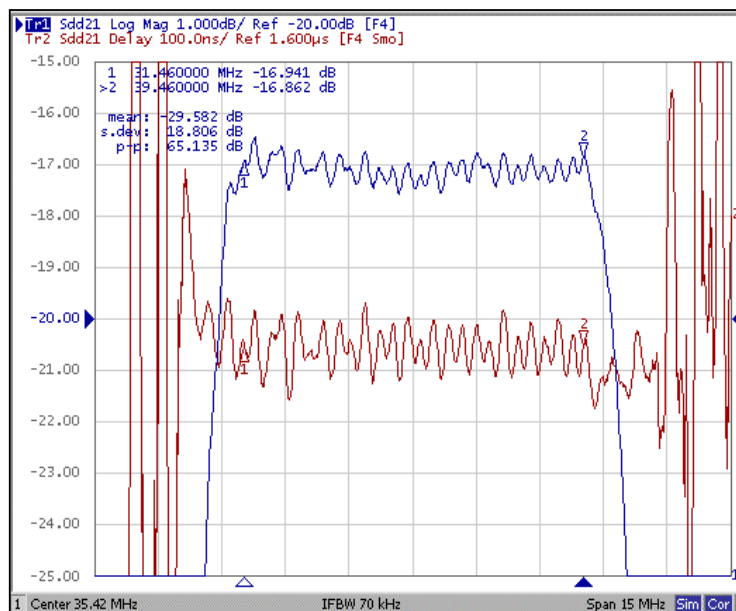


Fig-2 S21 Response Horizontal: 1.5MHz/Div Vertical: 1dB/Div  
100ns/Div

### 3. Wideband Response

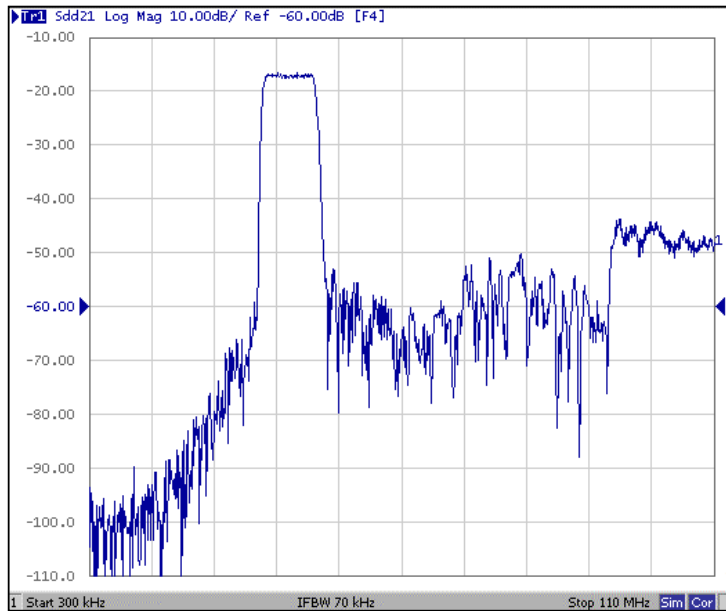
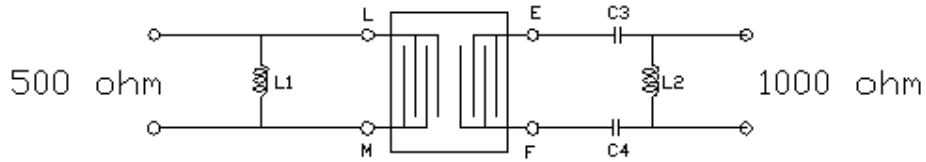


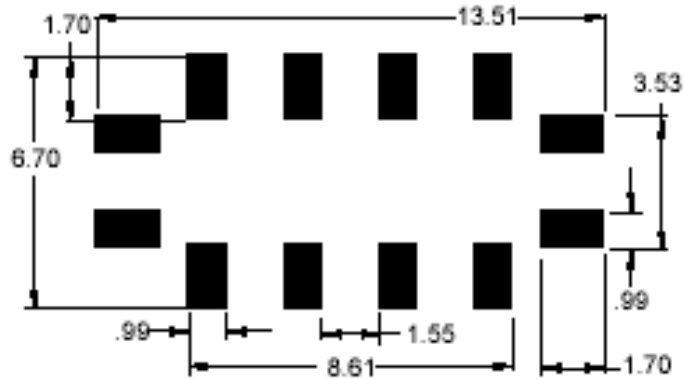
Fig-2 S21 Response Horizontal: 11MHz/Div Vertical: 1dB/Div

### E. TEST FIXTURE :



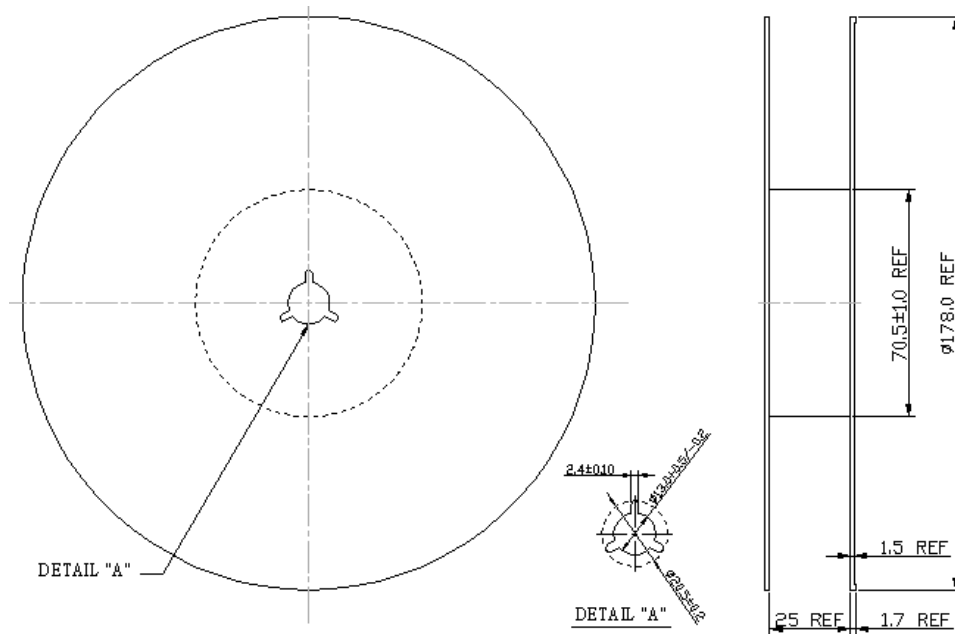
$$C1=C2=100\text{pF} \quad L1=390\text{nH} \quad L2=1560\text{nH}$$

## F. PCB FOOTPRINT



## G. PACKING:

### 1. REEL DIMENSION



## 2. TAPE DIMENSION

