



# TAI-SAW TECHNOLOGY CO., LTD.

No. 3, Industrial 2nd Rd., Ping-Chen Industrial District,  
Tao-Yuan, 324, Taiwan, R.O.C.

TEL: 886-3-4690038 FAX: 886-3-4697532

E-mail: [ttsales@mail.taisaw.com](mailto:ttsales@mail.taisaw.com) Web: [www.taisaw.com](http://www.taisaw.com)

## Approval Sheet for Product Specification

Issued Date:

Product Name: 140MHz IF SAW Filter (BW=6 MHz)

TST Parts No.: TB0320A

Customer Parts No.: \_\_\_\_\_

Company: _____
Division: _____
Approved by : _____
Date: _____

Checked by: \_\_\_\_\_ Andy Yu

Approval by: \_\_\_\_\_ Francis Chen

Date: \_\_\_\_\_ 01/30/2008



# TAI-SAW TECHNOLOGY CO., LTD.

No.3, Industrial 2nd Rd., Ping-Chen Industrial District, Taoyuan, Taiwan, R.O.C.

TEL: 886-3-4690038

FAX: 886-3-4697532

E-mail: [tstsales3@mail.taisaw.com](mailto:tstsales3@mail.taisaw.com) Web: [www.taisaw.com](http://www.taisaw.com)

SAW Filter 140MHz (SMD 13.3×6.5 mm)

MODEL NO.: TB0320A

Rev. NO. 2.0

## A. MAXIMUM RATINGS:

1. Input Power Level: 10 dBm
2. Operating Temperature: -40°C to 85°C
3. Storage Temperature: -40°C to 85°C

RoHS Compliant  
Lead free  
Lead-free soldering

## B. ELECTRICAL CHARACTERISTICS:

Ambient Temperature: 25 °C

Item	Unit	Min.	Type.	Max.
Central Frequency (Fo)	MHz	-	140	-
Insertion Loss	dB	-	10.5	12.5
1dB Bandwidth	MHz	5.8	6.7	-
3dB Bandwidth	MHz	6.0	7.5	-
40 dB Bandwidth	MHz	-	10.8	11.5
Passband Ripple (Fc)	P-PdB	-	0.6	1.0
Group delay Ripple	Nsec	-	52	70
Ultimate Rejection				
DC~125 MHz	dBc	40	55	-
155~200 MHz	dBc	40	49	-
In/Out Impedance	Ohm	-	50	-
Temp Coefficient	PPM/ °C		-18	

### C.FREQUENCY CHARACTERISTICS:

(1) wide band of Response: (span: 60MHz)

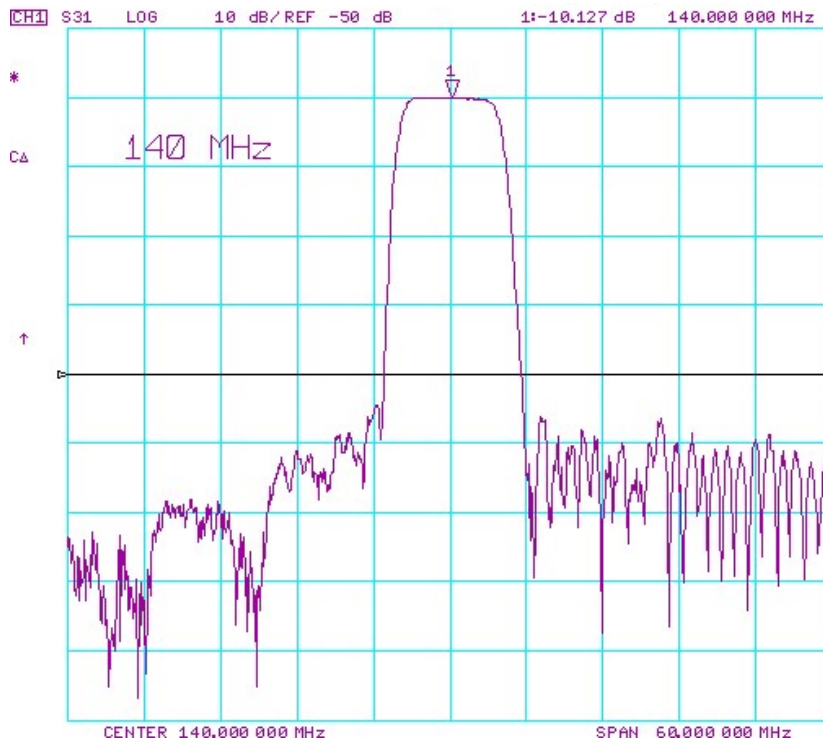


Fig1.S21 Response Horizontal:6MHz/Div Vertical: 10dB/Div

(2) Passband of Response: (span: 10MHz)

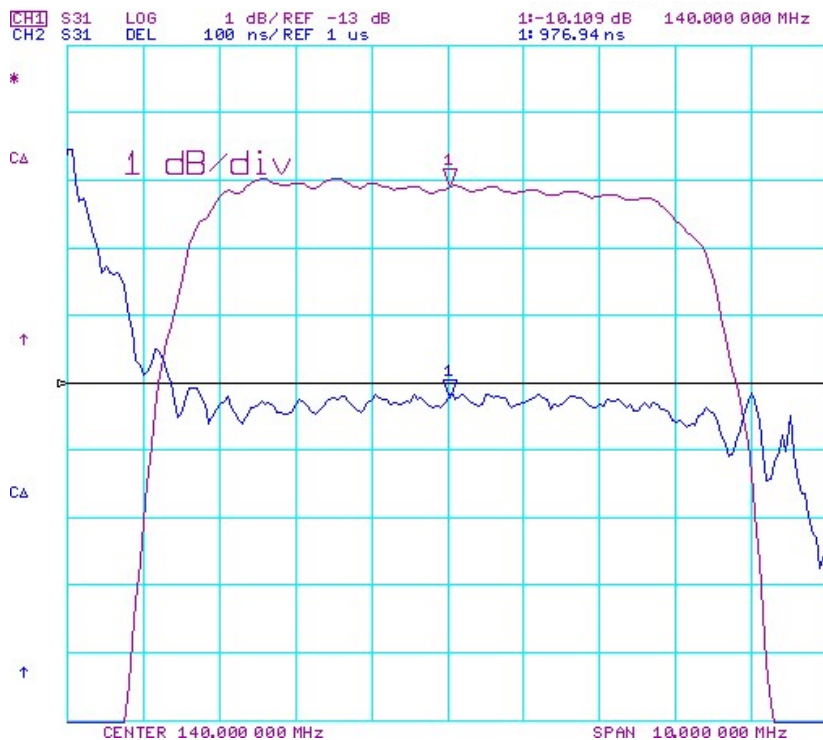
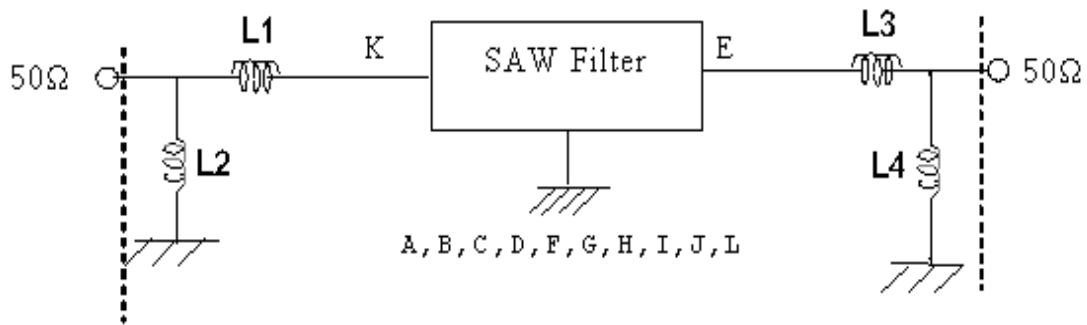


Fig2.S21 Response Horizontal:1MHz/Div Vertical: 1dB/Div

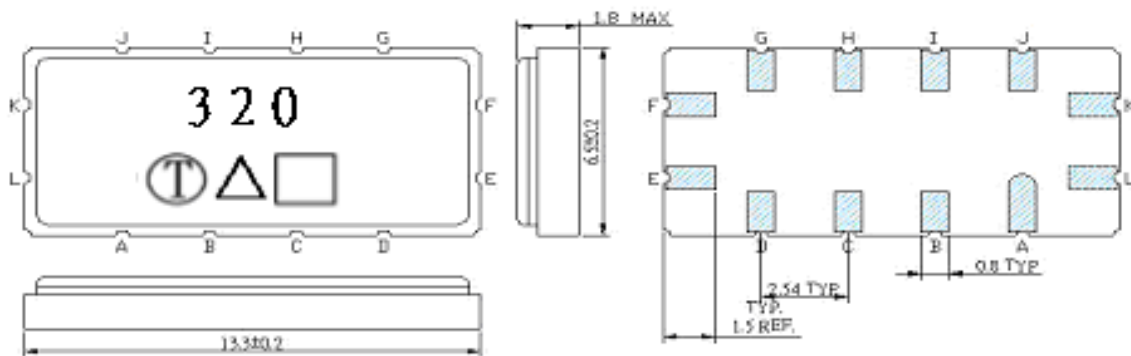
**D. TEST CIRCUIT:**

Network analyzer



Input: L1=33 nH; L2=22 nH  
 Output: L3= 22nH; L4=27 nH

**E. OUTLINE DRAWING:**



Unit: mm

Pin K: RF input+ ; L: RF input-

Pin E: RF output+ ; F: RF output-

□ : Week Code (Follow the table from planner each year)

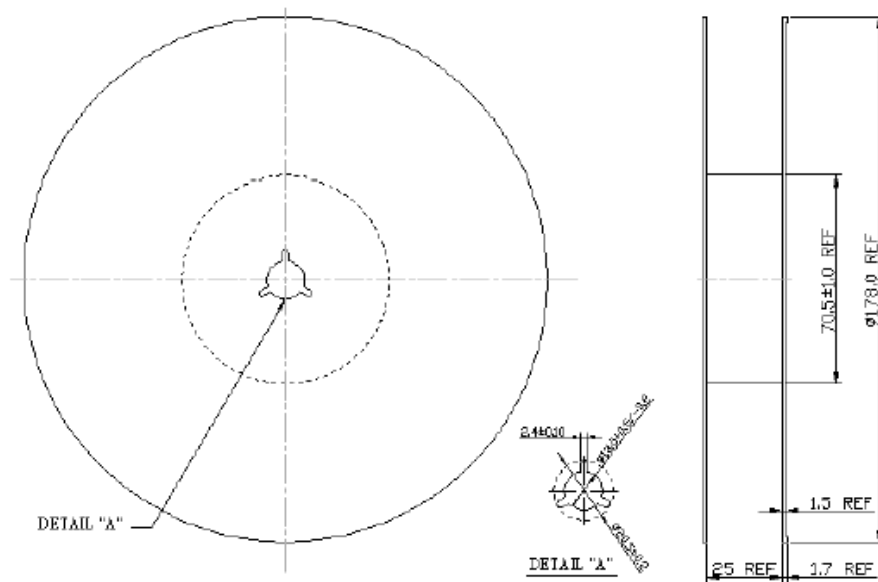
Unit : mm

△ : Product / Year Code

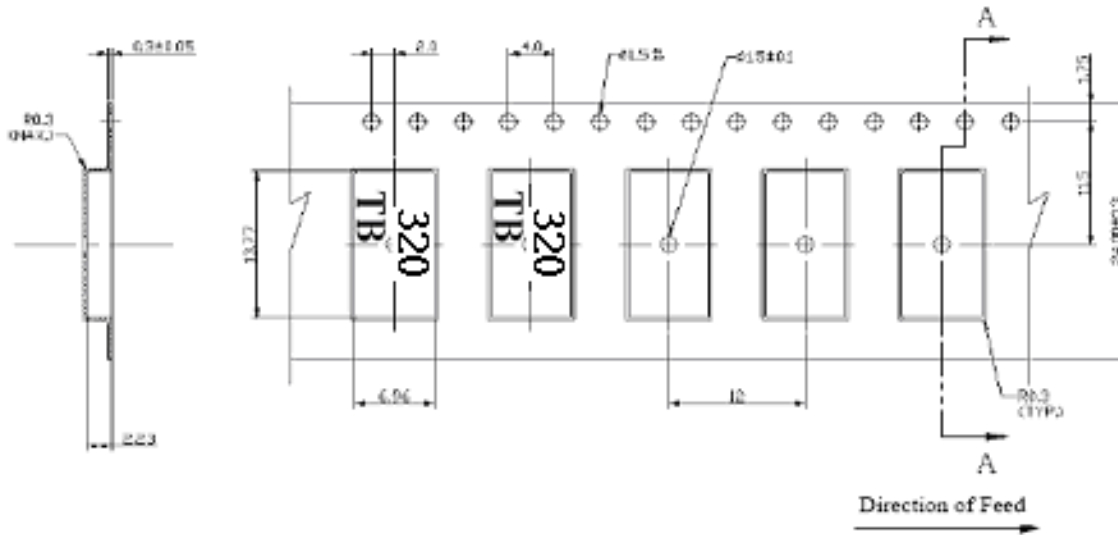
Year	2005 2009	2006 2010	2007 2011	2008 2012
Product Code	B	b	<u>B</u>	<u>b</u>

**G.PACKING:**

**1. REEL DIMENSION:**



**2 TAPE DIMENSION:**



H. Recommended Reflow Profile:

