



TAI-SAW TECHNOLOGY CO., LTD.

No. 3, Industrial 2nd Rd., Ping-Chen Industrial District,
Taoyuan, 324, Taiwan, R.O.C.

TEL: 886-3-4690038 FAX: 886-3-4697532

E-mail: ttsales@mail.taisaw.com Web: www.taisaw.com

Approval Sheet For Product Specification

Issued Date:

Product Name: IF SAW Filter 240 MHz (SMD 13.3mmX6.5mm)

TST Parts No.:TB0309A

Customer Parts No.: _____

Company: _____
Division: _____
Approved by : _____
Date: _____

Checked by: _____ Andy Lee

Approval by: _____ Francis Chen

Date: _____ 2005/6/30



TAI-SAW TECHNOLOGY CO., LTD.

No. 3, Industrial 2nd Rd., Ping-Chen Industrial District,
Taoyuan, 324, Taiwan, R.O.C.

TEL: 886-3-4690038 FAX: 886-3-4697532

E-mail: tstsales@mail.taisaw.com Web: www.taisaw.com

IF SAW Filter 240 MHz SMD 13.3mmX6.5mm

MODEL NO.: TB0309A

REV. NO. 1

A. MAXIMUM RATING:

1. Operating Temperature: -20 °C ~ +60 °C
3. Storage Temperature: -40 °C ~ +85 °C

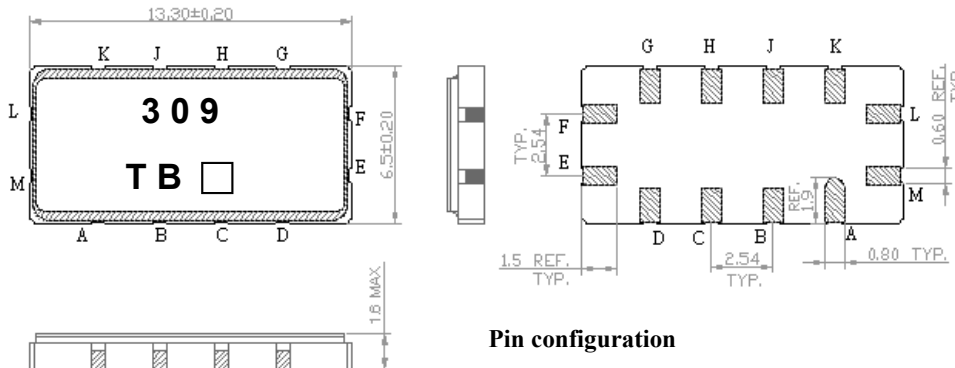
RoHS Compliant
Lead free
Lead-free soldering

B. Characteristics :

1. Ambient Temperature: 25 °

Characteristics			Value			Note.
			Min.		Max.	
Center frequency	F_C	MHz	239.92	239.96	240	-
Minimum Insertion loss	I.L.	dB	-	8.4	10	-
3dB Bandwidth		kHz	1000	1190	-	
Passband Ripple	$(F_c \pm 0.2 \text{ MHz})$	dB	-	0.2	1	-
Group Delay Ripple	$(F_c \pm 0.2 \text{ MHz})$	nS	-	100	200	-
Attenuation:(Reference level from minimum insertion loss)						
1)	$F_c \pm 1.0 \text{ MHz}$	dB	9	11.5	-	-
2)	$F_c \pm 1.75 \sim 2.5 \text{ MHz}$	dB	35	40	-	-
3)	$F_c \pm 2.5 \sim 3.5 \text{ MHz}$	dB	40	47	-	-
4)	$F_c \pm 3.50 \sim 50.0 \text{ MHz}$	dB	45	49	-	-

C.OUTLINE DRAWING:

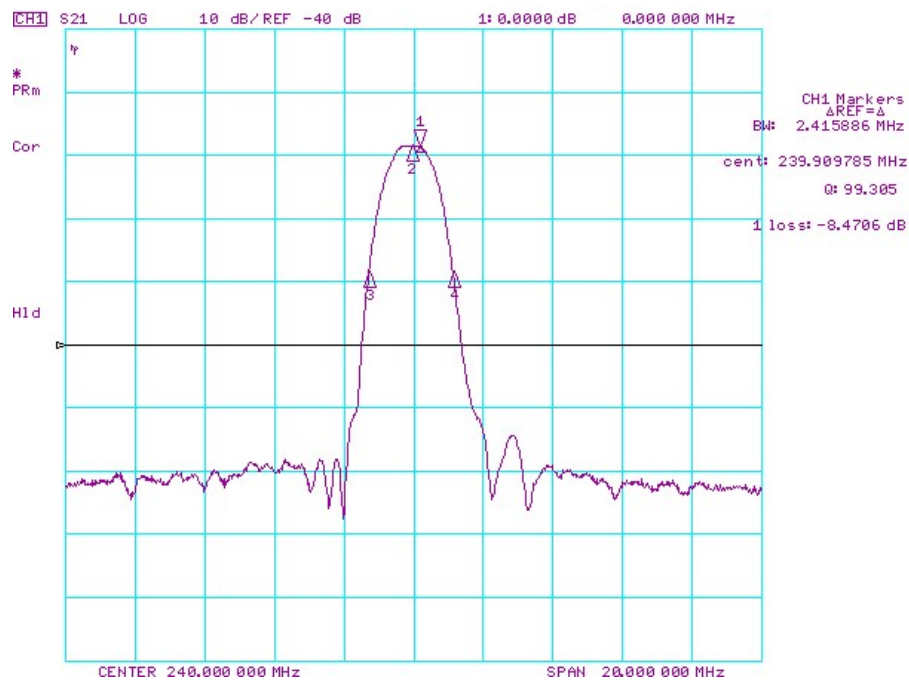


Pin configuration

- #L Input or Balanced Input
- #M Input ground or Balanced Input return
- #E Output or Balanced Output
- #F Output ground or Balanced Output return
- #A,B,C,D,G,H,J,K To be grounded
- Date code
- Unit mm

D. Frequency Characteristics :

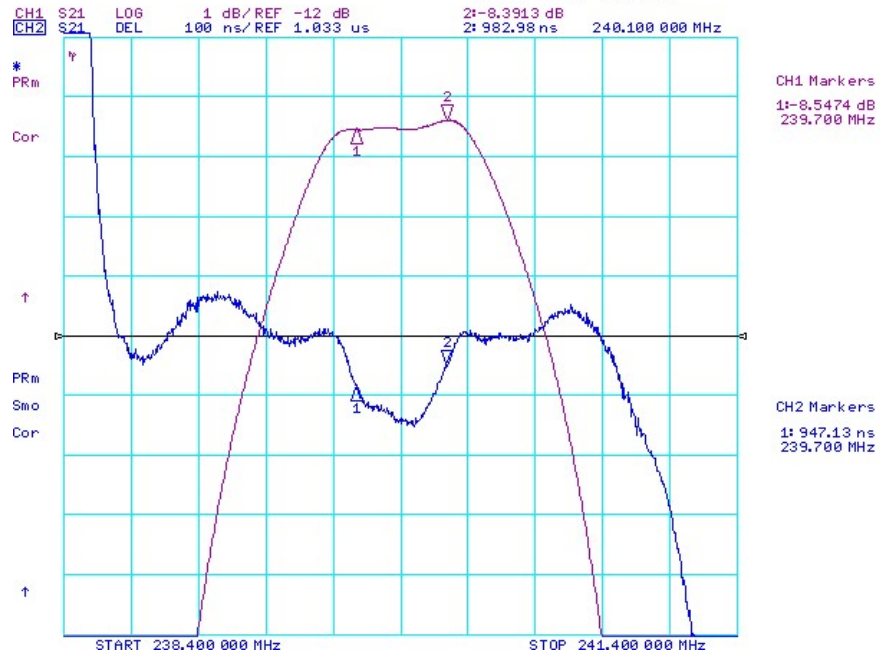
1. S21 Response



Horizontal : 2MHz/Div

Vertical: 10dB/Div

2. Pass band Ripple and Group Delay Ripple

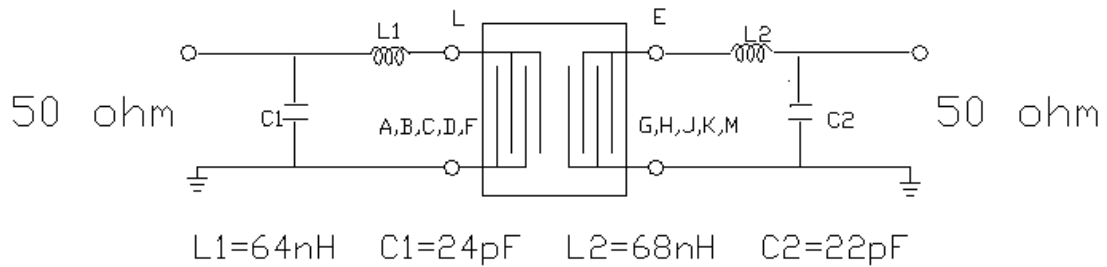


Horizontal : 0.3MHz/Div

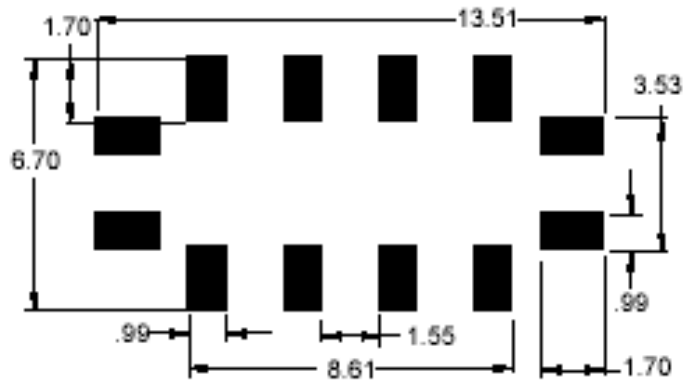
Vertical: 1dB/Div

Vertical: 100nS/Div

E. TEST FIXTURE :

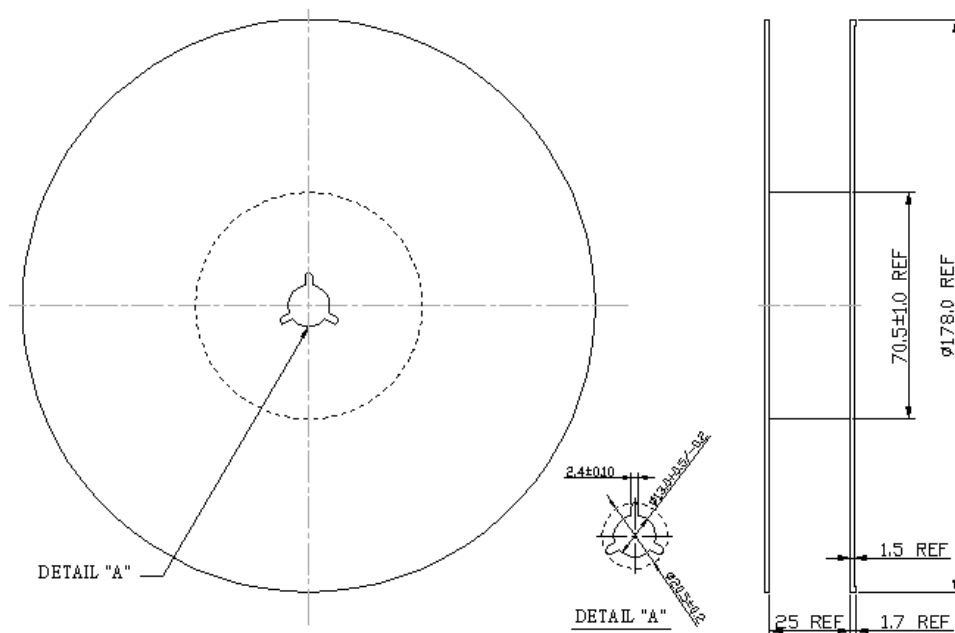


F. PCB FOOTPRINT



G. PACKING:

1. REEL DIMENSION



2. TAPE DIMENSION

