



# TAI-SAW TECHNOLOGY CO., LTD.

No. 3, Industrial 2nd Rd., Ping-Chen Industrial District,  
Taoyuan, 324, Taiwan, R.O.C.

TEL: 886-3-4690038 FAX: 886-3-4697532

E-mail: [ttsales@mail.taisaw.com](mailto:ttsales@mail.taisaw.com) Web: [www.taisaw.com](http://www.taisaw.com)

## Approval Sheet For Product Specification

Issued Date: Oct., 18, 2004

Product Name: SAW Filter 140 MHz SMD 5.0x7.0 mm

TST Parts No.:TB0217A

Customer Parts No.: \_\_\_\_\_

Company: _____
Division: _____
Approved by : _____
Date: _____

Checked by: \_\_\_\_\_ Bob Chau

Approval by: \_\_\_\_\_ Francis Chen

Date: \_\_\_\_\_ 10, 18, 2004



# TAI-SAW TECHNOLOGY CO., LTD.

No. 3, Industrial 2nd Rd., Ping-Chen Industrial District,  
Taoyuan, 324, Taiwan, R.O.C.

TEL: 886-3-4690038 FAX: 886-3-4697532

E-mail: [tstsales@mail.taisaw.com](mailto:tstsales@mail.taisaw.com) Web: [www.taisaw.com](http://www.taisaw.com)

## SAW Filter 140MHz

MODEL NO.:TB0217A

REV. NO.:2

### A. MAXIMUM RATING:

1. Input Power Level: 10 dBm
2. DC Voltage : 5V
3. Operating Temperature: -40°C to +85°C
4. Storage Temperature: -50°C to +95°C

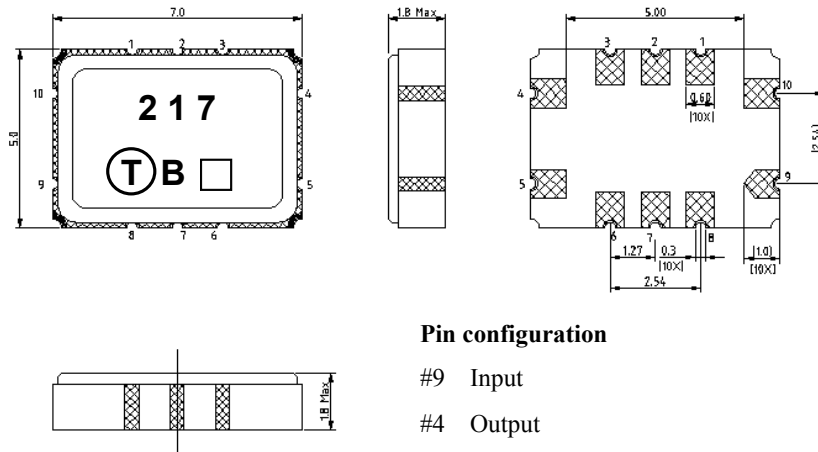
RoHS Compliant  
Lead free  
Lead-free soldering

### B. ELECTRICAL CHARACTERISTICS:

Item	Unit	Min.	Type.	Max.	Note
Center frequency, <b>Fc</b>	MHz	-	140	-	-
Minimum Insertion Loss, ( <b>Fc</b> ±20KHz ) <b>IL</b>	dB	-	3.0	6.0	-
3 dB bandwidth, <b>BW-3</b>	KHz	40	100	-	1
Passband Ripple ( <b>Fc</b> ±20KHz )	dB	-	0.1	3.0	-
50 dB bandwidth, <b>BW-50</b>	KHz	-	390	450	-
Group delay ripple ( <b>Fc</b> ±20KHz ), <b>GD</b>	μs	-	1	12	-
Temperature coefficient of frequency <b>TCf</b>	ppm/C <sup>2</sup>	-	-0.032	-	-

Note1. Considering -20 KHz frequency shift from -40°C to +85°C

### C.OUTLINE DRAWING:

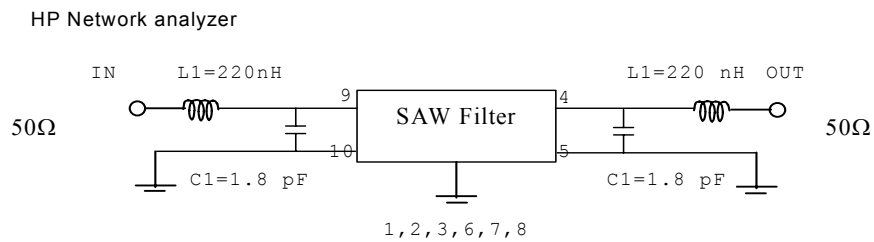


#### Pin configuration

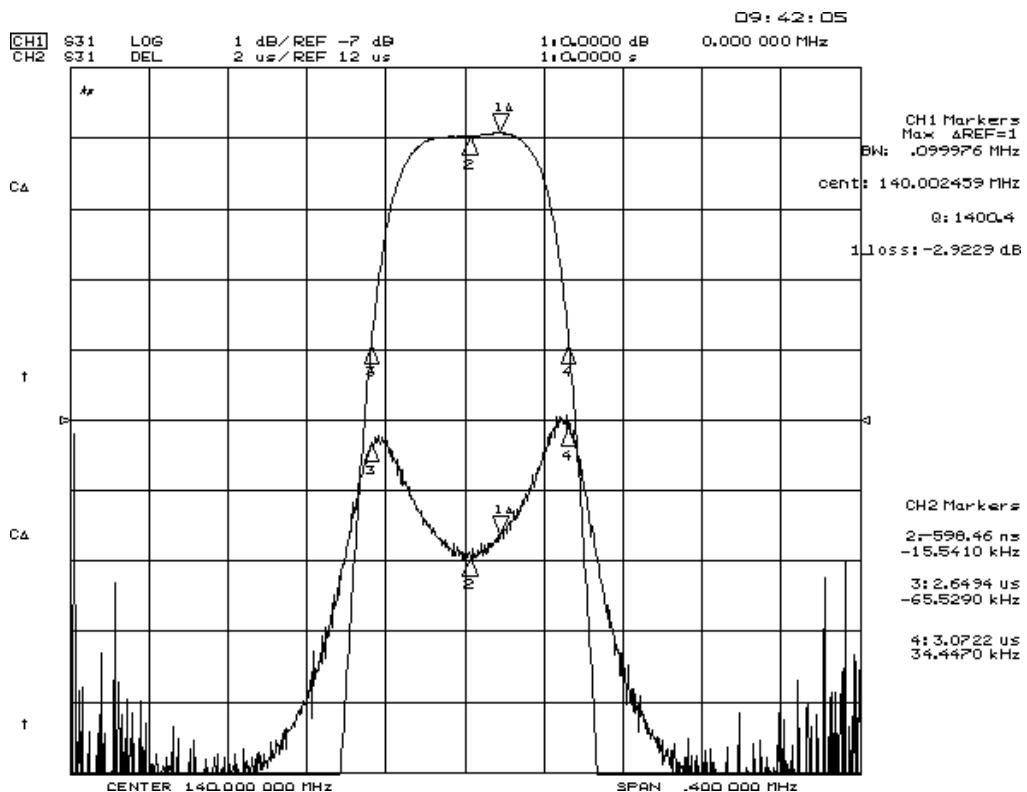
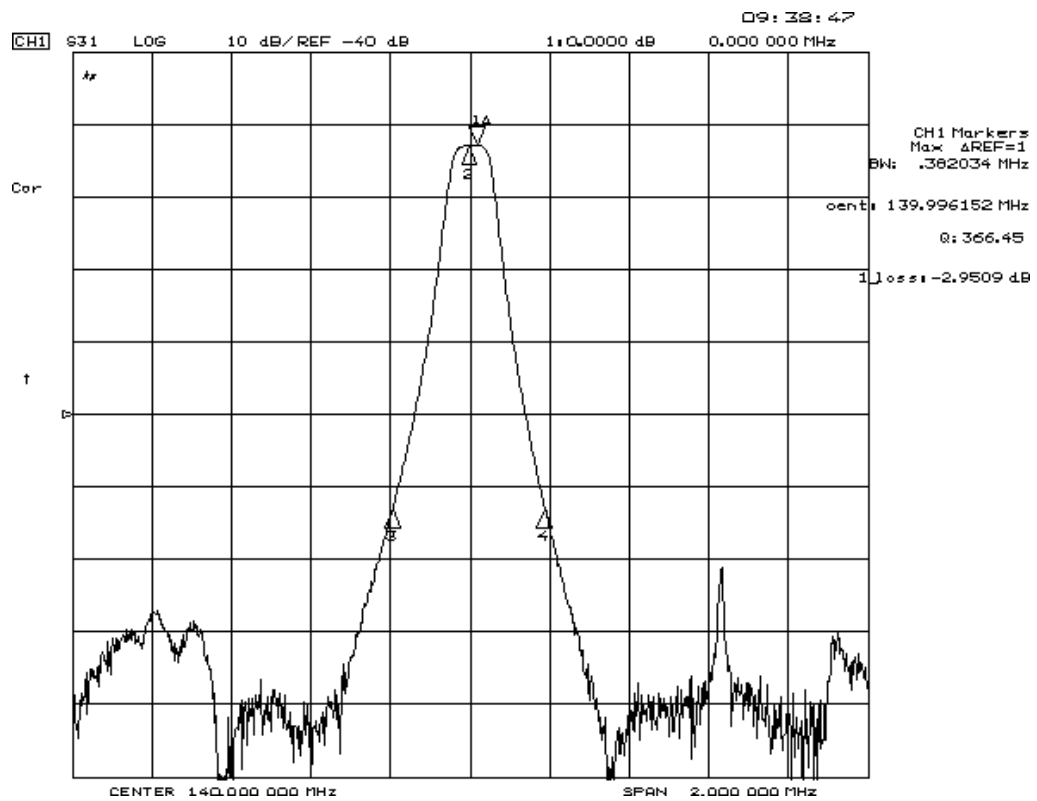
- #9 Input
- #4 Output
- #10 Balance input or input ground
- #5 Balance output or output ground
- #1,2,3,6,7,8 To be grounded
- Date code
- Unit mm

### D. MEASUREMENT CIRCUIT:

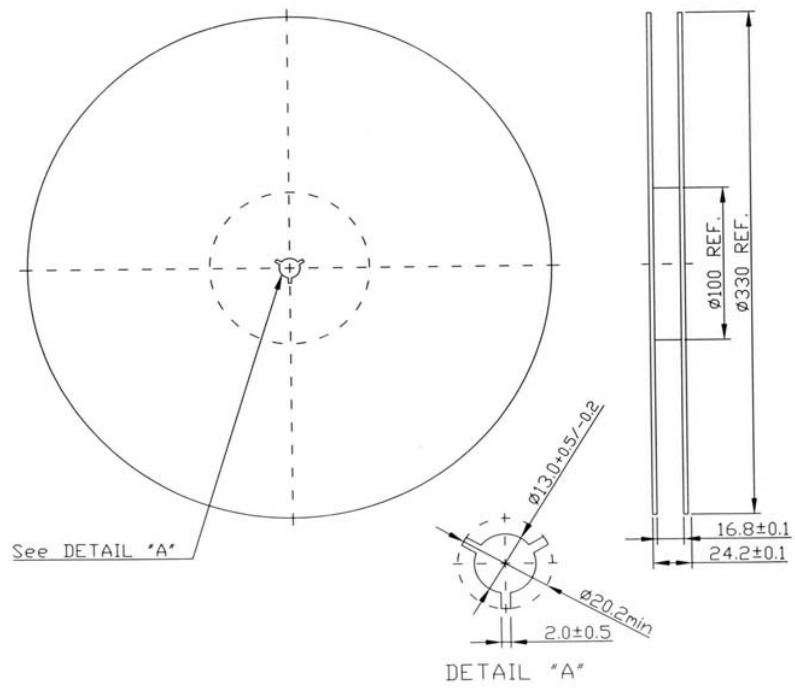
#### 50 Ohm Test circuit ( single-ended / single-ended )



## E. Frequency Characteristics :



**F. PACKING:**  
**1. REEL DIMENSION**



**2. TAPE DIMENSION**

