



TAI-SAW TECHNOLOGY CO., LTD.

No. 3, Industrial 2nd Rd., Ping-Chen Industrial District,
Taoyuan, 324, Taiwan, R.O.C.

TEL: 886-3-4690038 FAX: 886-3-4697532

E-mail: tstsales@mail.taisaw.com Web: www.taisaw.com

Approval Sheet For Product Specification

Issued Date: Sep, 5, 2003

Product Name: SAW Filter 119.64 MHz SMD 5x7 mm

TST Parts No.:TB0196A

Customer Parts No.: _____

Company: _____
Division: _____
Approved by : _____
Date: _____

Checked by: _____ Bob Chau

Approval by: _____ Francis Chen

Date: _____ Sep, 5, 2003



TAI-SAW TECHNOLOGY CO., LTD.

No. 3, Industrial 2nd Rd., Ping-Chen Industrial District,
Taoyuan, 324, Taiwan, R.O.C.

TEL: 886-3-4690038 FAX: 886-3-4697532

E-mail: tstsales@mail.taisaw.com Web: www.taisaw.com

SAW Filter 119.64MHz

MODEL NO.: TB0196A

REV. NO.:1

A. MAXIMUM RATING:

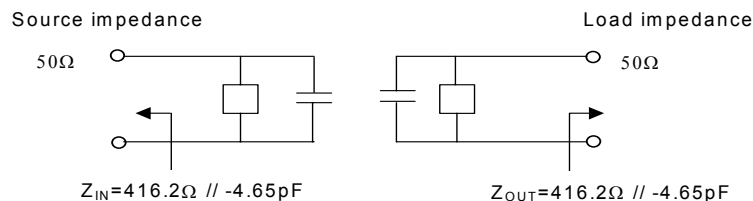
1. Input Power Level: 10 dBm
2. DC voltage : 13 V
3. Operating Temperature: -20°C to 75°C
4. Storage Temperature: -40°C to 85°C

RoHS Compliant
Lead free
Lead-free soldering

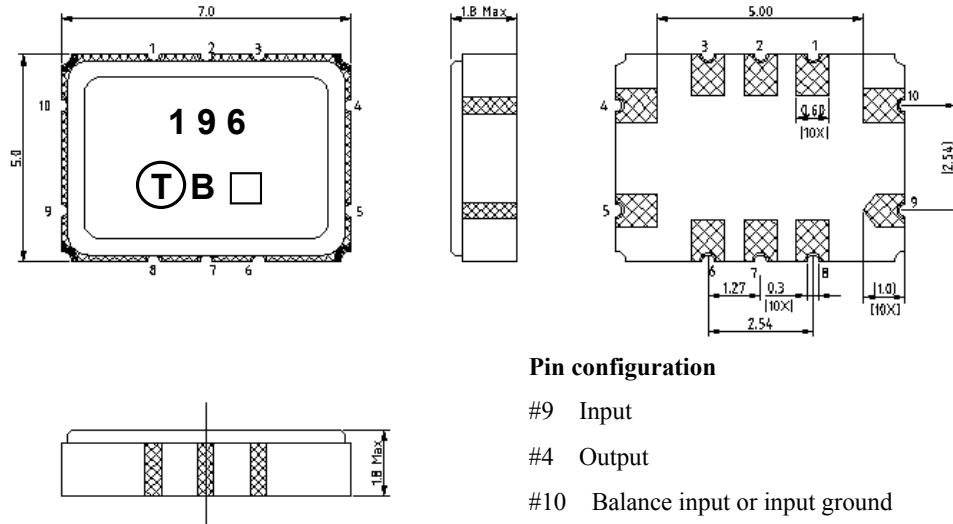
B. ELECTRICAL CHARACTERISTICS:

Item	Unit	Min.	Type.	Max.	Note
Center frequency, Fc	MHz	-	119.64	-	1
Minimum Insertion Loss, IL	dB	-	4	5.5	1
3 dB bandwidth (from Fc)	KHz	±15	-	-	1
Group delay ripple in Fc ±15KHz, GD	μs	-	5	10	1
Attenuation:(Reference level from min IL)					
Fc - 15 to Fc + 15 KHz	dB	-	1.2	3.0	
Fc ± 60 to Fc ± 120 KHz	dB	13	23	-	
Fc ± 120 to Fc ± 240 KHz	dB	43	50	-	
Fc ± 240 to Fc ± 330 KHz	dB	45	55	-	
Fc ± 330 to Fc ± 480 KHz	dB	45	55	-	
Fc ± 480 to Fc ± 660 KHz	dB	45	55	-	

Note1. The standard definitions is in JIS C 6703



C.OUTLINE DRAWING:

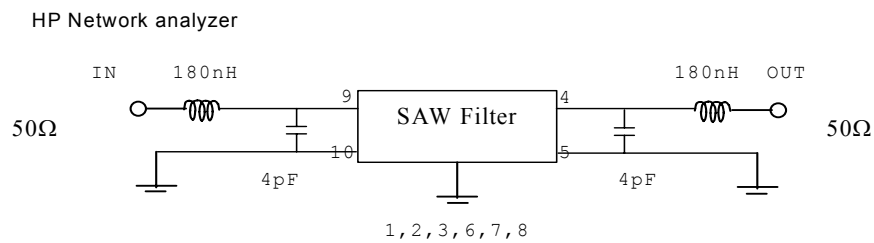


Pin configuration

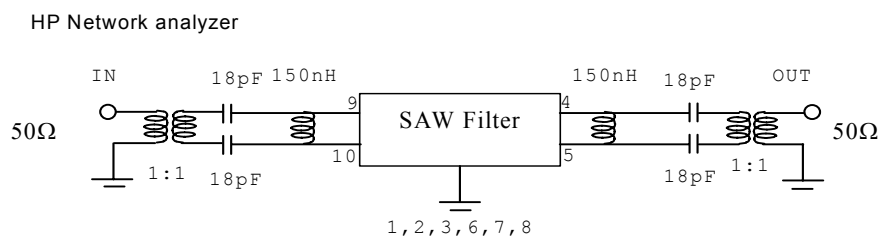
- #9 Input
 - #4 Output
 - #10 Balance input or input ground
 - #5 Balance output or output ground
 - #1,2,3,6,7,8 To be grounded
 - Date code
- Unit mm

D. MEASUREMENT CIRCUIT:

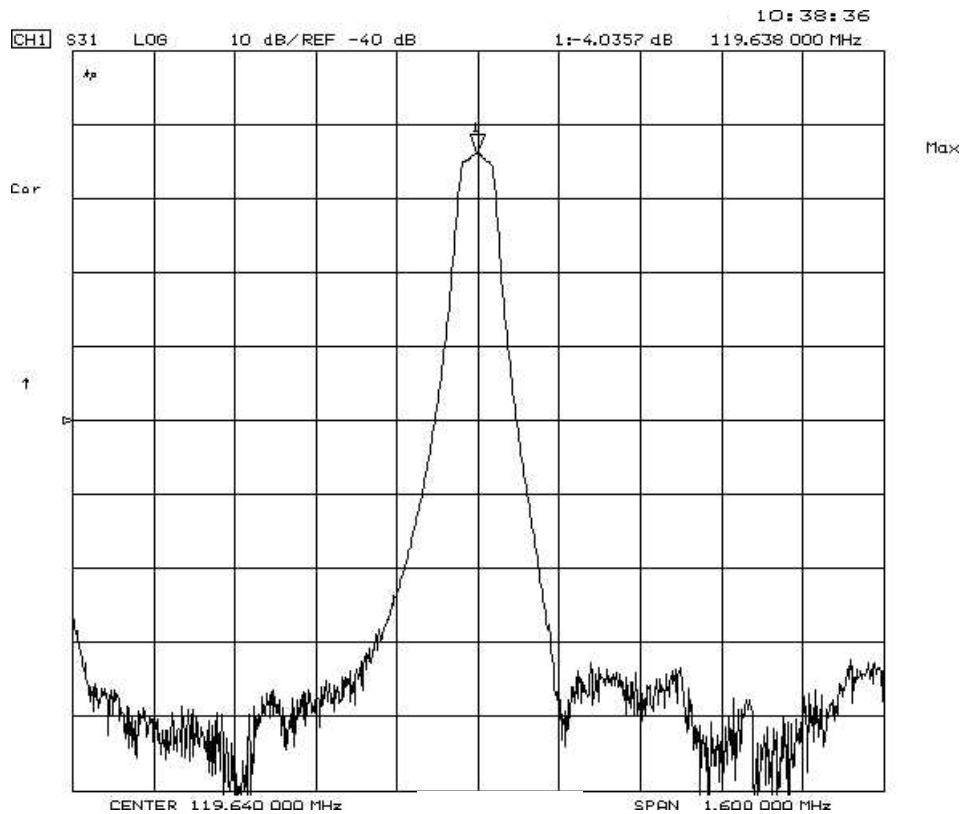
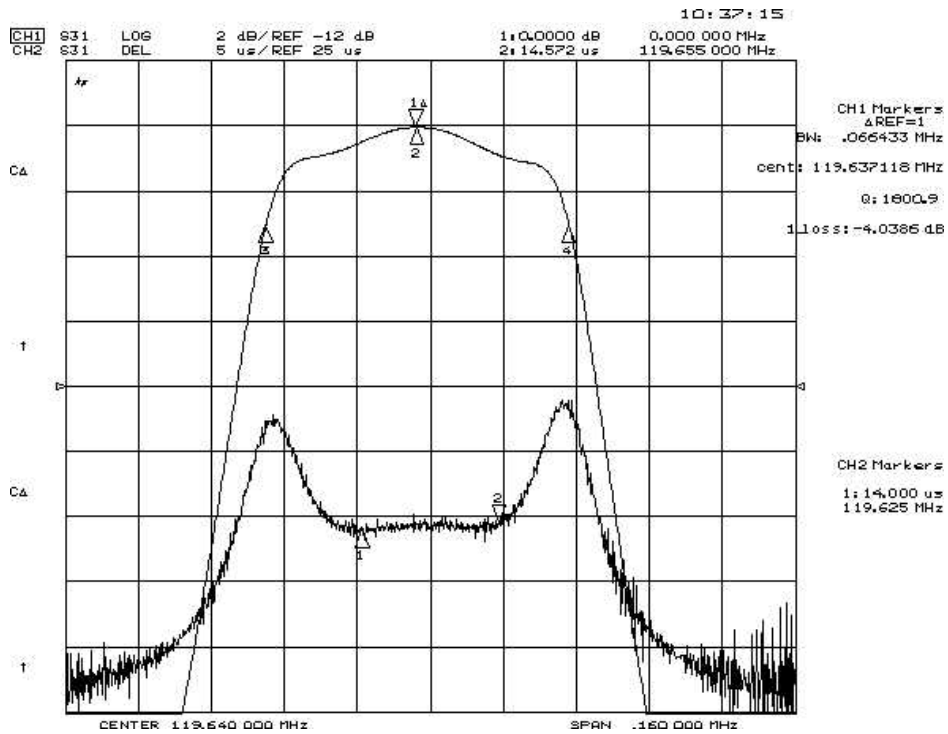
50 Ohm Test circuit 1 (single-ended / single-ended)



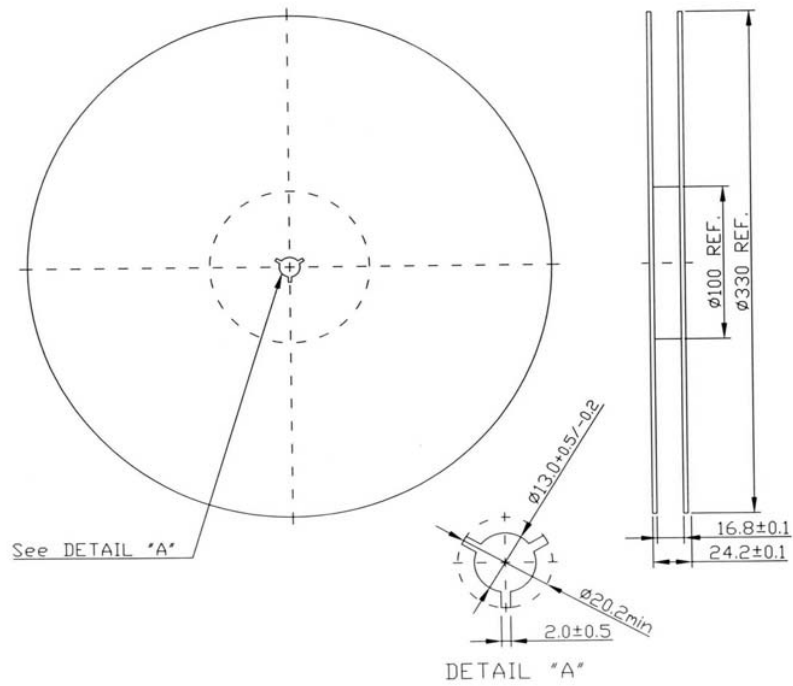
50 Ohm Test circuit 2 (balance / balance)



E. Frequency Characteristics :



F. PACKING:
1. REEL DIMENSION



2. TAPE DIMENSION

