

# ETC4-1-8

## E-Series RF 1:4 Transformer 20 – 350 MHz

V1

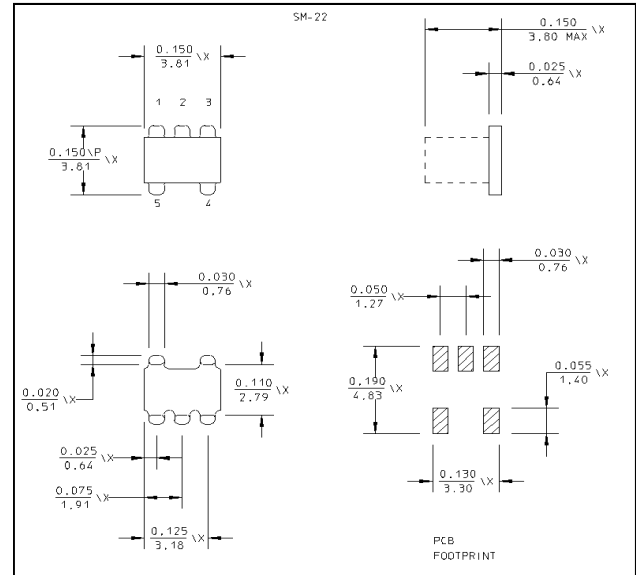
### Features

- 1:4 Impedance Ratio
- CT on Secondary
- Surface Mount
- Tape and reel packaging available

### Description

M/A-COM's ETC4-1-8 is a 4:1 RF transmission line step-up transformer in a low cost, surface mount package. Ideally suited for high volume cellular and wireless applications. Typical applications include single to balanced mode conversion and impedance matching. Parts are packaged in tape & reel.

### SM - 22 Package



### Electrical Specifications: $T_A = 25^\circ\text{C}$ , $Z_0 = 50\Omega$ <sup>1</sup>

Parameter	Test Conditions	Frequency	Units	Min	Typ	Max
RF Frequency	—	20 - 350	MHz	—	—	—
Insertion Loss	$F_L - f_U$	20 - 350	dB	—	—	3.0
		50 - 200				2.0
Amplitude Unbalance	$F_L - f_U$	20 - 350	dB	—	—	0.5
Phase Unbalance	$F_L - f_U$	20 - 350	Degrees	—	—	5

### Absolute Maximum Ratings<sup>1</sup>

Parameter	Absolute Maximum
RF Power	250 mW
DC Current	100 mA
Operating Temperature	-40°C to +85°C
Storage Temperature	-55°C to +125°C

1. Operation of this device above any one of these parameters may cause permanent damage.

### Ordering Information

Part Number	Package
ETC4-1-8TR	Tape and Reel (2000 piece Reel)

**ADVANCED:** Data Sheets contain information regarding a product M/A-COM Technology Solutions is considering for development. Performance is based on target specifications, simulated results, and/or prototype measurements. Commitment to develop is not guaranteed.

**PRELIMINARY:** Data Sheets contain information regarding a product M/A-COM Technology Solutions has under development. Performance is based on engineering tests. Specifications are typical. Mechanical outline has been fixed. Engineering samples and/or test data may be available. Commitment to produce in volume is not guaranteed.

• **North America** Tel: 800.366.2266 • **Europe** Tel: +353.21.244.6400  
 • **India** Tel: +91.80.4155721 • **China** Tel: +86.21.2407.1588

Visit [www.macomtech.com](http://www.macomtech.com) for additional data sheets and product information.

M/A-COM Technology Solutions Inc. and its affiliates reserve the right to make changes to the product(s) or information contained herein without notice.

# ETC4-1-8

E-Series RF 1:4 Transformer  
20 – 350 MHz

V1

## Pin Configuration

Pin No.	Function
1	Secondary
2	Secondary CT
3	Secondary Dot
4	Primary Dot
5	Primary

## Schematic

