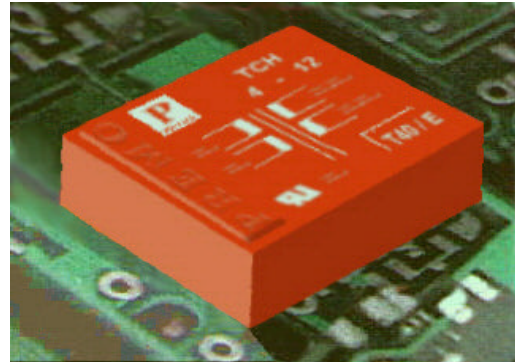


ECM Flat Mains Transformer

TCH - TNC Series

- VDE and UL Approvals
- 110V X 2 Universal Primary
- Dual 115V Primary Option
- Up to 42VA Power Rating
- Low Leakage Current
- High Reliability



These low profile transformers have high dielectric strength and very low leakage current. The core is laminated using UI type grain orientated magnetic plates.

OUTLINE AND DIMENSIONS

Fig. 1

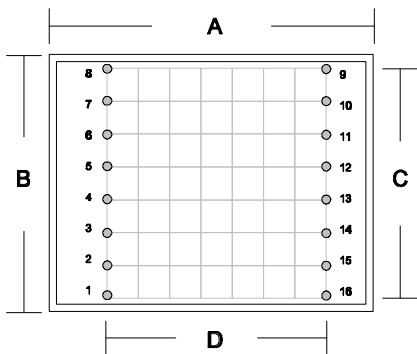


Fig. 2

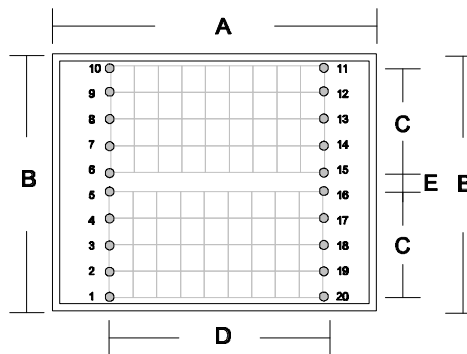
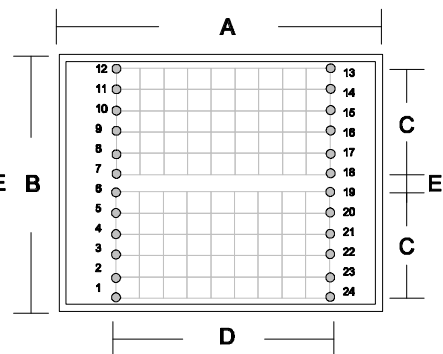


Fig. 3



H = TOTAL HEIGHT EXCLUDING PINS

Package	Outline (Fig.)	A (mm)	B	C	D	E	H	Pin Dia.
TCH - A	1	53.0	44.0	7x5.0	35.0	-	19	0.8
TCH - B	1	53.0	44.0	7x5.0	35.0	-	22	0.8
TCH - C	2	68.0	57.5	4X5.0	45.0	6.0	22	0.8
TCH - D	2	68.0	57.5	4X5.0	45.0	6.0	27	0.8
TNC - F	2	73.5	54.0	4x5.0	45.0	5.0	26	0.8
TNC - G	2	73.5	54.0	4x5.0	45.0	5.0	35	0.8
TNC - H	3	89.0	69.0	5X5.0	52.0	7.5	37	0.8

ECM Electronics Limited, Penmaen House, Ashington, West Sussex, RH20 3JR, UK
 Tel: +44(0)1903 892810: Fax: +44(0)1903 892738. Email: ecm@ecmelectronics.co.uk

Although we have attempted to accurately reflect the products we market. ECM reserve the right without prior notice to discontinue any product or make design changes we believe necessary.

ECM Flat Mains Transformer

ECM Part	VA	Primary 2 X 110V Between Pins-	Secondary Output 2 X	Secondary Connection Between Pins-	Weight (kgs)
TCH-A 2-6	2	1-3 / 6-8	6V - 0.166A	9-10 / 15-16	0.15
TCH-A 2-9	2	1-3 / 6-8	9V - 0.111A	9-10 / 15-16	0.15
TCH-A 2-12	2	1-3 / 6-8	12V - 0.083A	9-10 / 15-16	0.15
TCH-A 2-15	2	1-3 / 6-8	15V - 0.066A	9-10 / 15-16	0.15
TCH-A 2-18	2	1-3 / 6-8	18V - 0.055A	9-10 / 15-16	0.15
TCH-A 2-24	2	1-3 / 6-8	24V - 0.041A	9-10 / 15-16	0.15
TCH-A 4-6	4	1-3 / 6-8	6V - 0.333A	9-10 / 15-16	0.15
TCH-A 4-9	4	1-3 / 6-8	9V - 0.222A	9-10 / 15-16	0.15
TCH-A 4-12	4	1-3 / 6-8	12V - 0.166A	9-10 / 15-16	0.15
TCH-A 4-15	4	1-3 / 6-8	15V - 0.133A	9-10 / 15-16	0.15
TCH-A 4-18	4	1-3 / 6-8	18V - 0.111A	9-10 / 15-16	0.15
TCH-A 4-24	4	1-3 / 6-8	24V - 0.083A	9-10 / 15-16	0.15
TCH-B 6-6	6	1-3 / 6-8	6V - 0.500A	9-10 / 15-16	0.15
TCH-B 6-9	6	1-3 / 6-8	9V - 0.333A	9-10 / 15-16	0.15
TCH-B 6-12	6	1-3 / 6-8	12V - 0.250A	9-10 / 15-16	0.15
TCH-B 6-15	6	1-3 / 6-8	15V - 0.200A	9-10 / 15-16	0.15
TCH-B 6-18	6	1-3 / 6-8	18V - 0.166A	9-10 / 15-16	0.15
TCH-B 6-24	6	1-3 / 6-8	24V - 0.125A	9-10 / 15-16	0.15
TCH-C 7-6	7	2-4 / 7-9	6V - 0.583A	11-12 / 19-20	0.28
TCH-C 7-9	7	2-4 / 7-9	9V - 0.388A	11-12 / 19-20	0.28
TCH-C 7-12	7	2-4 / 7-9	12V - 0.291A	11-12 / 19-20	0.28
TCH-C 7-15	7	2-4 / 7-9	15V - 0.233A	11-12 / 19-20	0.28
TCH-C 7-18	7	2-4 / 7-9	18V - 0.194A	11-12 / 19-20	0.28
TCH-C 7-24	7	2-4 / 7-9	24V - 0.145A	11-12 / 19-20	0.28
TCH-C 10-6	10	2-4 / 7-9	6V - 0.833A	11-12 / 19-20	0.28
TCH-C 10-9	10	2-4 / 7-9	9V - 0.555A	11-12 / 19-20	0.28
TCH-C 10-12	10	2-4 / 7-9	12V - 0.416A	11-12 / 19-20	0.28
TCH-C 10-15	10	2-4 / 7-9	15V - 0.333A	11-12 / 19-20	0.28
TCH-C 10-18	10	2-4 / 7-9	18V - 0.277A	11-12 / 19-20	0.28
TCH-C 10-24	10	2-4 / 7-9	24V - 0.208A	11-12 / 19-20	0.28
TCH-D 14-6	14	2-4 / 7-9	6V - 1.166A	11-12 / 19-20	0.41
TCH-D 14-9	14	2-4 / 7-9	9V - 0.777A	11-12 / 19-20	0.41
TCH-D 14-12	14	2-4 / 7-9	12V - 0.583A	11-12 / 19-20	0.41
TCH-D 14-15	14	2-4 / 7-9	15V - 0.466A	11-12 / 19-20	0.41
TCH-D 14-18	14	2-4 / 7-9	18V - 0.388A	11-12 / 19-20	0.41
TCH-D 14-24	14	2-4 / 7-9	24V - 0.291A	11-12 / 19-20	0.41
TNC-F 15-6	15	2-4 / 7-9	6V - 1.250A	11-12 / 19-20	0.32
TNC-F 15-9	15	2-4 / 7-9	9V - 0.833A	11-12 / 19-20	0.32
TNC-F 15-12	15	2-4 / 7-9	12V - 0.625A	11-12 / 19-20	0.32
TNC-F 15-15	15	2-4 / 7-9	15V - 0.500A	11-12 / 19-20	0.32
TNC-F 15-18	15	2-4 / 7-9	18V - 0.416A	11-12 / 19-20	0.32
TNC-F 15-24	15	2-4 / 7-9	24V - 0.312A	11-12 / 19-20	0.32

ECM Electronics Limited, Penmaen House, Ashington, West Sussex, RH20 3JR, UK
 Tel: +44(0)1903 892810; Fax: +44(0)1903 892738. Email: ecm@ecmelectronics.co.uk

Although we have attempted to accurately reflect the products we market. ECM reserve the right without prior notice to discontinue any product or make design changes we believe necessary.

ECM Flat Mains Transformer

ECM Part	VA	Primary 2 X 110V Between Pins-	Secondary Output 2 X	Secondary Connection Between Pins	Weight (kgs)
TCH-D 18-6	18	2-4 / 7-9	6V - 1.500A	11-12 / 19-20	0.41
TCH-D 18-9	18	2-4 / 7-9	9V - 1.000A	11-12 / 19-20	0.41
TCH-D 18-12	18	2-4 / 7-9	12V - 0.750A	11-12 / 19-20	0.41
TCH-D 18-15	18	2-4 / 7-9	15V - 0.600A	11-12 / 19-20	0.41
TCH-D 18-18	18	2-4 / 7-9	18V - 0.500A	11-12 / 19-20	0.41
TCH-D 18-24	18	2-4 / 7-9	24V - 0.375A	11-12 / 19-20	0.41
TNC-G 25-6	25	2-4 / 7-9	6V - 2.080A	11-12 / 19-20	0.50
TNC-G 25-9	25	2-4 / 7-9	9V - 1.380A	11-12 / 19-20	0.50
TNC-G 25-12	25	2-4 / 7-9	12V - 1.040A	11-12 / 19-20	0.50
TNC-G 25-15	25	2-4 / 7-9	15V - 0.830A	11-12 / 19-20	0.50
TNC-G 25-18	25	2-4 / 7-9	18V - 0.694A	11-12 / 19-20	0.50
TNC-G 25-24	25	2-4 / 7-9	24V - 0.520A	11-12 / 19-20	0.50
TNC-H 42-6	42	2-5 / 8-11	6V - 3.500A	13-15 / 22-24	0.80
TNC-H 42-9	42	2-5 / 8-11	9V - 2.333A	13-15 / 22-24	0.80
TNC-H 42-12	42	2-5 / 8-11	12V - 1.750A	13-15 / 22-24	0.80
TNC-H 42-15	42	2-5 / 8-11	15V - 1.400A	13-15 / 22-24	0.80
TNC-H 42-18	42	2-5 / 8-11	18V - 1.166A	13-15 / 22-24	0.80

Customer specifications also welcome

ECM Electronics Limited, Penmaen House, Ashington, West Sussex, RH20 3JR, UK
Tel: +44(0)1903 892810: Fax: +44(0)1903 892738. Email: ecm@ecmelectronics.co.uk

Although we have attempted to accurately reflect the products we market. ECM reserve the right without prior notice to discontinue any product or make design changes we believe necessary.

Issue 1