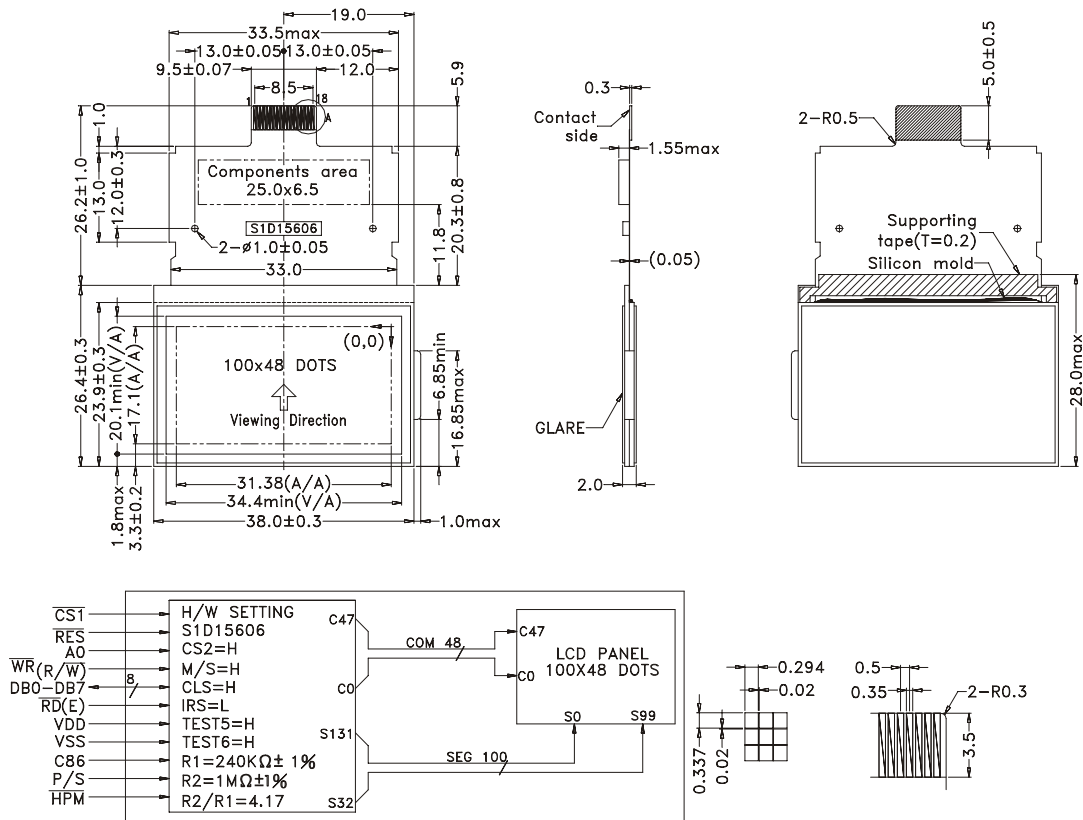


## OUTLINE DIMENSION & BLOCK DIAGRAM



### MECHANICAL SPECIFICATION

Overall Size	38.0 x 52.6 mm	Module	H2 / H1
View Area	34.4 x 20.1 mm	W/O B/L	- / 2.0
Dot Size	0.294 x 0.337 mm	EL B/L	- / -
Dot Pitch	0.314 x 0.357 mm	LED B/L	- / -

### PIN ASSIGNMENT

Pin No.	Symbol	Function
1	CS1	Chip select
2	RES	Reset
3	AO	Display/control data select
4	R/W(WR)	Read/write command select
5	E/(RD)	Read enable
6-11	DB0-DB5	Data input
12	DB6(SCL)	Data/serial clock input
13	DB7(SI)	Data/serial data input
14	VDD	Logic power supply
15	VSS(GND)	Ground
16	C86	MPU 8080/6800 interface select
17	P/S	Parallel/serial data read/write select
18	/HPM	Normal/high power mode select

### ABSOLUTE MAXIMUM RATING

Item	Symbol	Condition	Min.	Max.	Units
Supply for logic voltage	$V_{DD}-V_{SS}$	25°C	-0.3	7.0	V
LCD driving supply voltage	$V_{DD}-V_{EE}$	25°C	-0.3	18.0	V
Input Voltage	$V_{IN}$	25°C	-0.3	$V_{DD}+0.3$	V

### ELECTRICAL CHARACTERISTICS

Item	Symbol	Condition	Min.	Typical	Max.	Units	
Power supply voltage	$V_{DD}-V_{SS}$	25°C	2.7	3.0	5.5	V	
LCD operation voltage	$V_{OP}$	$T_{OP}$	N	W	N	W	V
		-20°C	-	-	-	-	V
		0°C	-	-	-	-	V
		25°C	-	8.6	-	9.1	V
		50°C	-	-	-	-	V
		70°C	-	-	-	V	
LCM current consumption (No B/L)	$I_{DD}$	$V_{DD}=5V$	-	0.3	0.6	mA	
	-	-	-	-	-	mA	
Backlight current consumption	-	-	-	-	-	mA	

### REMARK

LCD option: STN, FSTN  
Backlight Option: under request.