

# MS3180 and MS3181 Protective Covers

MIL-DTL-26482

**MS3180-12 C A L**

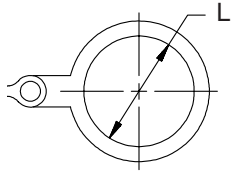
Basic Part No. \_\_\_\_\_  
 MS3180 = Plug Cover  
 MS3181 = Receptacle Cover

Shell Size \_\_\_\_\_

Attachment Option \_\_\_\_\_  
 C = Chain  
 N = Chain with Ring (MS3181 Only)  
 R = Wire Rope

Length  
 L = Chain or Rope Length of 5 inches  
 (127.0 mm) Omit for Standard (See K in  
 Table)

Finish  
 A = Anodize



**MS3181 Optional  
Ring Attachment**

**MS3180-12 C**

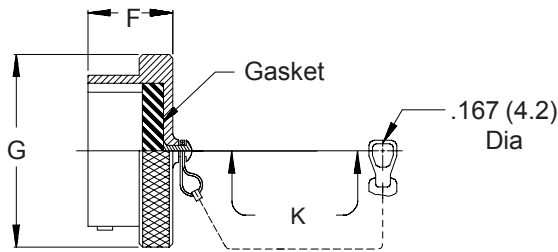
Basic Part No. \_\_\_\_\_  
 MS3180 = Plug Cover  
 MS3181 = Receptacle Cover

Shell Size \_\_\_\_\_

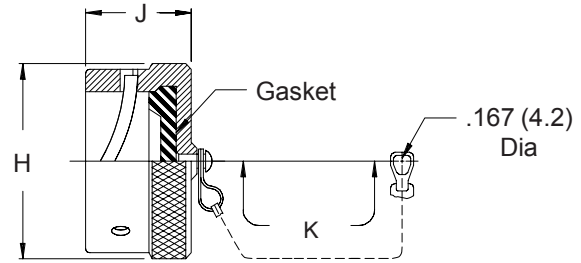
Attachment Option (Omit For No Attachment)  
 C = Chain  
 N = Chain with Ring (MS3181 Only)

**Prior Revision "D" Available**

Note: Finish is Cadmium Olive Drab



**MS3180 Plug Cover**



**MS3181 Receptacle Cover**

**TABLE I**

Shell Size	F Max	G Dia Max	H Dia Max	J Max	K Standard Length	L Min
8	.562 (14.3)	.719 (18.3)	.734 (18.6)	.562 (14.3)	3.00 (76.2)	.578 (14.7)
10	.562 (14.3)	.844 (21.4)	.859 (21.8)	.562 (14.3)	3.00 (76.2)	.703 (17.9)
12	.562 (14.3)	1.000 (25.4)	1.000 (25.4)	.562 (14.3)	3.50 (88.9)	.891 (22.6)
14	.562 (14.3)	1.125 (28.6)	1.125 (28.6)	.562 (14.3)	3.50 (88.9)	1.016 (25.8)
16	.562 (14.3)	1.250 (31.8)	1.250 (31.8)	.562 (14.3)	3.50 (88.9)	1.141 (29.0)
18	.562 (14.3)	1.375 (34.9)	1.375 (34.9)	.562 (14.3)	3.50 (88.9)	1.266 (32.2)
20	.625 (15.9)	1.500 (38.1)	1.500 (38.1)	.562 (14.3)	4.00 (101.6)	1.391 (35.3)
22	.625 (15.9)	1.625 (41.3)	1.625 (41.3)	.562 (14.3)	4.00 (101.6)	1.516 (38.5)
24	.658 (16.7)	1.750 (44.5)	1.750 (44.5)	.602 (15.3)	4.00 (101.6)	1.641 (41.7)

1. For complete dimensions see applicable Military Specification.
2. Metric dimensions (mm) are indicated in parentheses.