

High Precision Power Splitter

PS Series



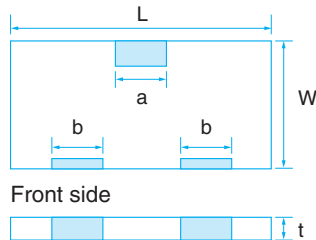
Power splitter with excellent high frequency characteristics for applications from DC~20GHz Bit error is restrained by keeping high frequency digital signal stable Offer standard type with ground and custom type designed to customer' specification.

RoHS compliant Completely lead free



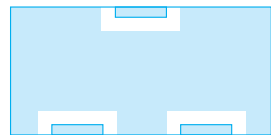
SPECIFICATIONS

Mechanical



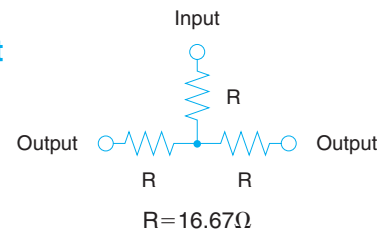
Dimension (Inch Size)	PS1608(G) (0603)	PS2012(G) (0805)	PS3216(G) (1206)	PS5025(G) (2010)
L	1.6±0.2	2.0±0.2	3.2±0.2	5.0±0.2
W	0.8±0.2	1.25±0.2	1.6±0.2	2.5±0.2
a	0.4±0.1	0.4±0.1	0.3±0.1	0.35±0.1
b	0.3±0.1	0.3±0.1	0.35±0.1	0.65±0.1
t	0.4±0.1	0.4±0.1	0.4±0.1	0.8±0.15

(unit : mm)



Back side No ground for custom type

Equivalent circuit



Electrical

Standard type

Type	PS1608G	PS2012G	PS3216G	PS5025G
Operating frequency	DC~20GHz	DC~17.5GHz	DC~15GHz	DC~10GHz
Insertion loss	6±0.5dB(DC~10GHz)	6±0.5dB(DC~10GHz)	6±0.5dB(DC~10GHz)	6±0.5dB(DC~7.5GHz)
	6±1.0dB(10GHz~20GHz)	6±1.0dB(10GHz~17.5GHz)	6±1.0dB(10GHz~15GHz)	6±1.0dB(7.5GHz~10GHz)
Split deviation	max.0.3dB			
VSWR	1.3(DC~10GHz)	1.3(DC~10GHz)	1.3(DC~10GHz)	1.3(DC~7.5GHz)
	1.5(10GHz~20GHz)	1.5(10GHz~17.5GHz)	1.5(10GHz~15GHz)	1.5(7.5GHz~10GHz)
Input power	100mW	125mW	250mW	500mW
Max overload power	200mW	250mW	500mW	1000mW
Operating temperature	-40~125°C			
Package	1,000-5,000pcs/reel			

*Standard type with ground on back side can gain stable performance regardless of circuit characteristics

*Custom type without ground on back side can be designed according to specific circuit

- Please ask as for chip custom type with demension of 1.0*0.5mm
- Simplified pattern can be realized as ground is not required on the surface of circuit



PART NUMBER

PS 1608 G T2 - R50 - T1(T5)

