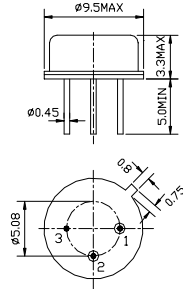


**1. Package Dimension** Unit: mm

Pin No.	Function
1.	Input
2.	Output
3.	Ground

**2. Electronic Characteristics**

Electrostatic Sensitive Device (ESD)

Item		Units	Minimum	Typical	Maximum
<b>Center Frequency (fo)</b>		MHz	435.645	435.72	435.795
<b>Insertion Loss</b>		dB	—	1.2	2.0
<b>Quality Factor</b>	Unloaded Q	—	—	13,000	—
	50Ω Loaded Q	—	—	1,900	—
<b>Temperature Stability</b>	Turnover Temperature	—	—	25	—
	Turnover Frequency	KHz	—	fo+2.7	—
	Freq. Temp. Coefficient	ppm/	—	0.032	—
<b>Frequency Aging</b>		ppm/yr	—	<±10	—
<b>DC Insulation Resistance</b>		MΩ	1.0	—	—
<b>RF Equivalent RLC Model</b>	Motional Resistance R <sub>1</sub>	Ω	—	18	25
	Motional Inductance L <sub>1</sub>	μH	—	85.38	—
	Motional Capacitance C <sub>1</sub>	fF	—	1.56	—
	Shunt Static Capacitance C <sub>0</sub>	pF	1.4	1.7	2.0