

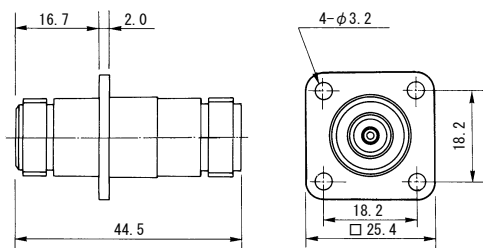
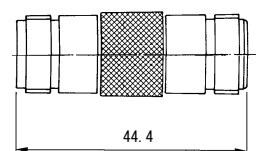
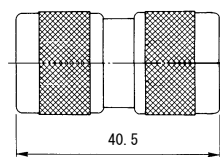
# Adapter Connectors

## Conversion Connector

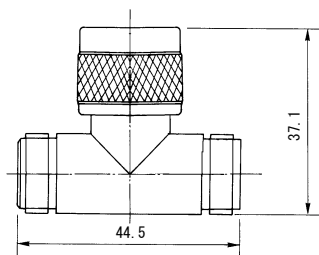
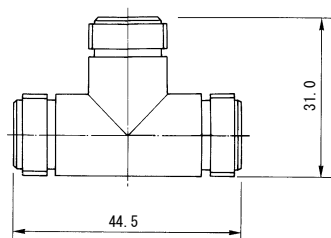
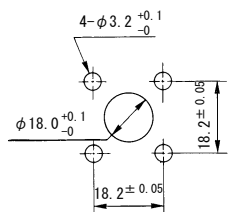


- The adaptor connector is a connector to convert the connector with a different engagement entrance.

## ■ N to N



### Mounting Hole



P/N	Finish	
	Shell	Contact
N-A-PP-1	Ag	Ag
N-A-PP-1-Ni	Ni	Ag

P/N	Finish	
	Shell	Contact
N-A-JJ	Ag	Ag
N-A-JJ-NiCAu	Ni	Au
N-A-JJ-Ni-1	Ni	Ag
UG-29B/U	Ag	Ag

P/N	Finish	
	Shell	Contact
N-PA-JJ	Ag	Ag
N-PA-JJ-CAu	Ni	Au
N-PA-JJ-Ni	Ni	Ag
N-PA-JJ-SUS	SUS	Ag

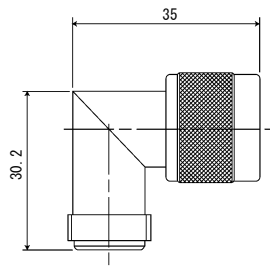
P/N	Finish	
	Shell	Contact
N-TA-JJJ	Ag	Ag
N-TA-JJJ-Ni	Ni	Ag

P/N	Finish	
	Shell	Contact
N-TA-JPJ	Ag	Ag
N-TA-JPJ-Ni	Ni	Ag

# Adapter Connectors

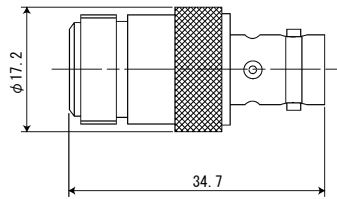
Unit : mm

## ■ N to N

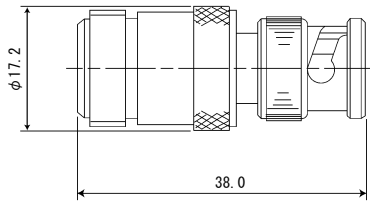


P/N	Finish	
	Shell	Contact
N-LA-PJ	Ag	Ag
N-LA-PJ-Ni	Ni	Ag

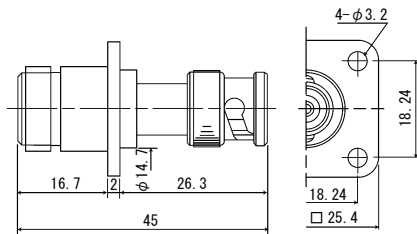
## ■ N to BNC



P/N	Finish	
	Shell	Contact
NJ-BNCJ	Ag	Ag

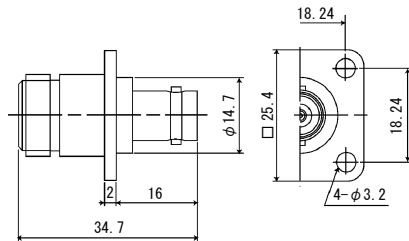
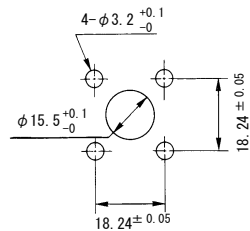


P/N	Finish	
	Shell	Contact
NJ-BNCP	Ag	Ag



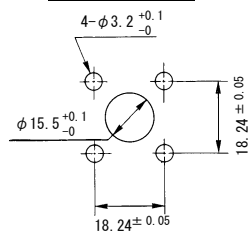
P/N	Finish	
	Shell	Contact
NJ-BNCP-PA	Ag	Ag

### Mounting Hole



P/N	Finish	
	Shell	Contact
NJ-BNCJ-PA	Ag	Ag

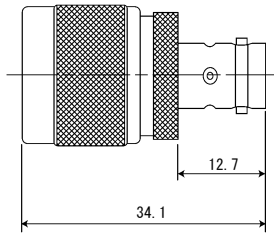
### Mounting Hole



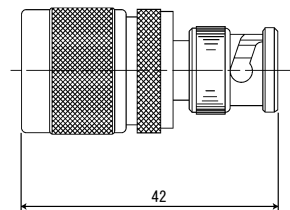
# Adapter Connectors

Unit : mm

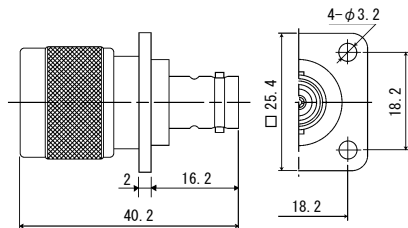
## ■ N to BNC



P/N	Finish	
	Shell	Contact
NP-BNCJ	Ag	Ag

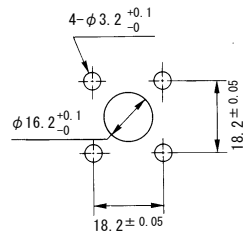


P/N	Finish	
	Shell	Contact
NP-BNCP	Ag	Ag

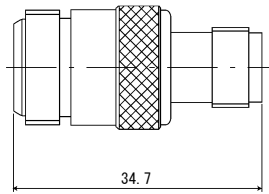


P/N	Finish	
	Shell	Contact
NP-BNCJ-PA	Ag	Ag

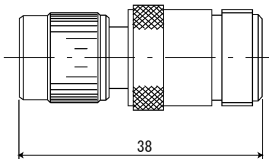
### Mounting Hole



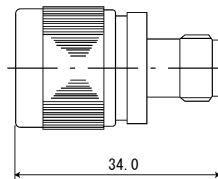
## ■ N to TNC



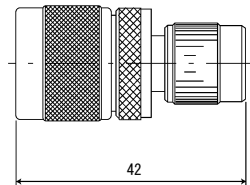
P/N	Finish	
	Shell	Contact
NJ-TNCJ	Ag	Ag



P/N	Finish	
	Shell	Contact
NJ-TNCP	Ag	Ag



P/N	Finish	
	Shell	Contact
NP-TNCJ	Ag	Ag

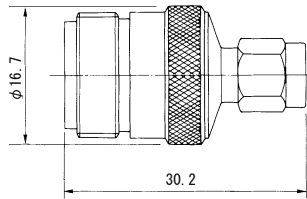


P/N	Finish	
	Shell	Contact
NP-TNCP	Ag	Ag

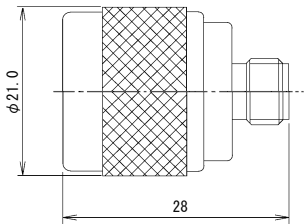
# Adapter Connectors

Unit : mm

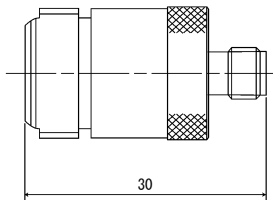
## ■ N to DM



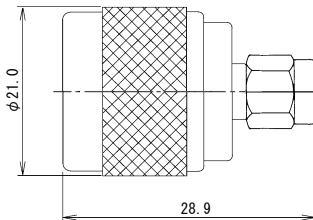
P/N	Finish	
	Shell	Contact
NJ-DMP	SUS	Au



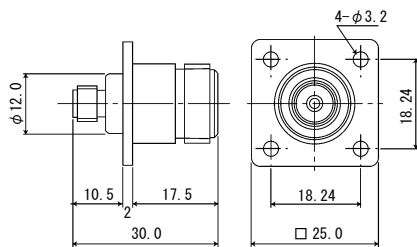
P/N	Finish	
	Shell	Contact
NP-DMJ	Au	Au



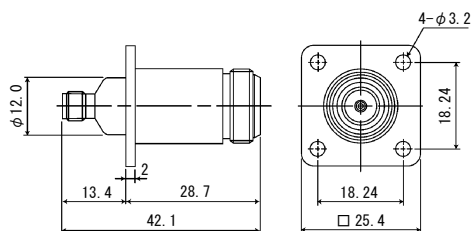
P/N	Finish	
	Shell	Contact
NJ-DMJ	Au	Au



P/N	Finish	
	Shell	Contact
NP-DMP	Au	Au



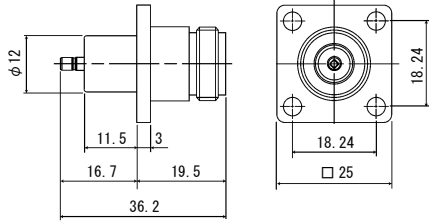
P/N	Finish	
	Shell	Contact
NJ-DMJ-PA-1	Ni	Au



P/N	Finish	
	Shell	Contact
NJ-DMJ-PA-2	Ni	Au

Unit : mm

## ■ N to SSMB



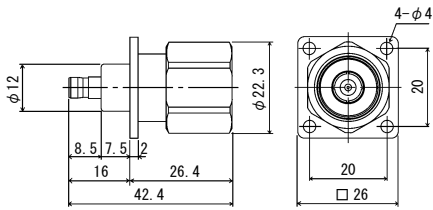
P/N	Finish	
	Shell	Contact
NJ-PA-SSMBJ	N side: Ni	Au
	SSMB side: Au	



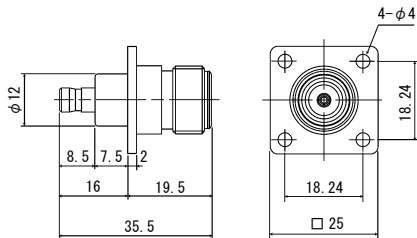
# Adapter Connectors

Unit : mm

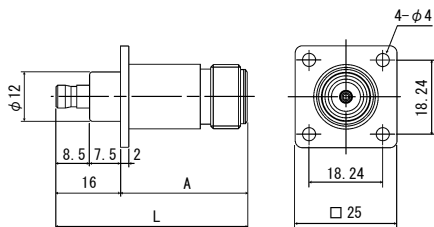
## ■ N to PDM



P/N	Finish	
	Shell	Contact
NP-PA-PDMJ	Ni	Au



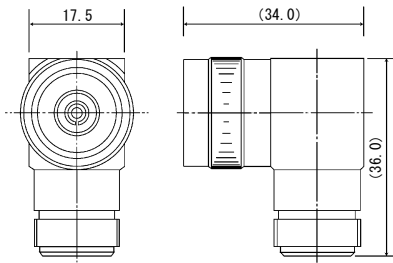
P/N	Finish	
	Shell	Contact
NJ-PA-PDMJ	Ni	Au



P/N	$\phi A$	L	Finish	
			Shell	Contact
NJ-PA-PDMJ-3	30.6	46.6	Ni	Au
NJ-PA-PDMJ-4	24.6	40.6	Ni	Au
NJ-PA-PDMJ-5	24.0	42.0	Ni	Au

Unit : mm

## ■ S to S

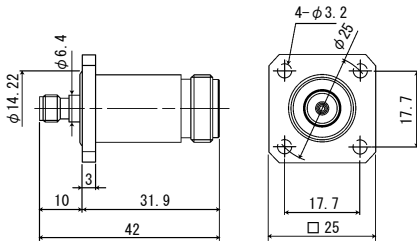


P/N	Finish	
	Shell	Contact
S-LA	Ni	Ag

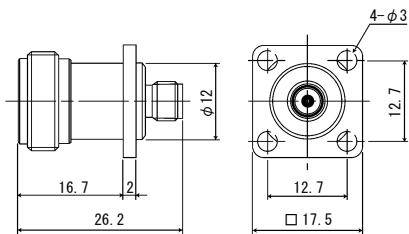
# Adapter Connectors

Unit : mm

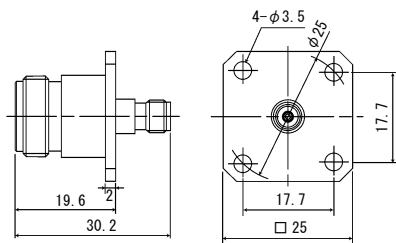
## ■ S to DM



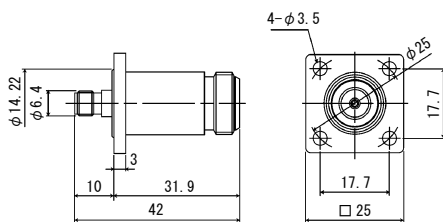
P/N	Finish		Note
	Shell	Contact	
SJ-PA-DMJ	Ag	Ag	with flange and O ring



P/N	Finish	
	Shell	Contact
SJ-PA-DMJ-1	Ag	Ag

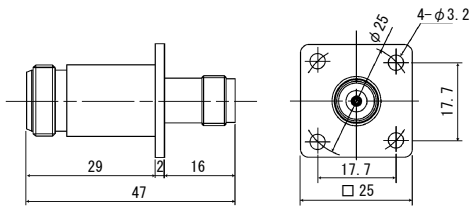


P/N	Finish	
	Shell	Contact
SJ-PA-DMJ-2	Ni	Au



P/N	Finish	
	Shell	Contact
SJ-PA-DMJ-3	Ni	Au

## ■ S to TNC

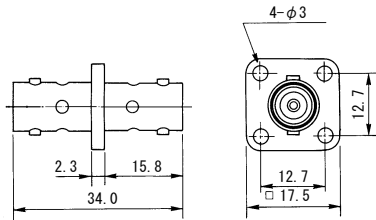
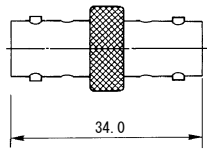
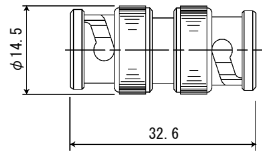


P/N	Finish	
	Shell	Contact
SJ-PA-TNCJ-1	Ag	Ag

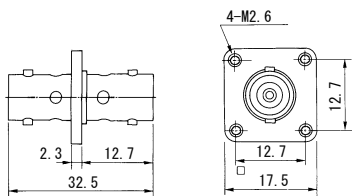
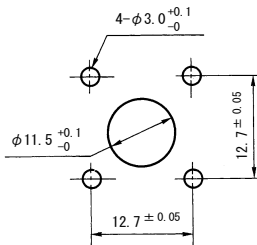
# Adapter Connectors

Unit : mm

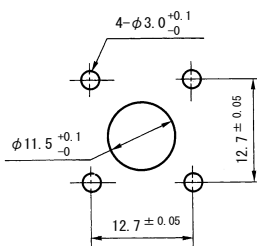
## ■ BNC to BNC



### Mounting Hole



### Mounting Hole



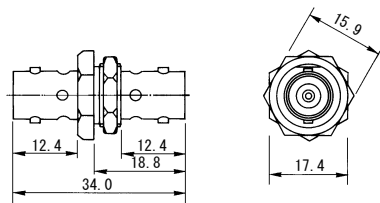
P/N	Finish	
	Shell	Contact
BNC-A-PP	Ag	Ag
BNC-A-PP-Ni	Ni	Ag
UG-491/U	Ag	Ag

P/N	Finish	
	Shell	Contact
BNC-A-JJ	Ag	Ag
BNC-A-JJ-NiCAu	Ni	Au

P/N	Finish	
	Shell	Contact
BNC-PA-JJ	Ag	Ag
BNC-PA-JJ-Ni	Ni	Ag
BNC-PA-JJ-NiCAu	Ni	Au

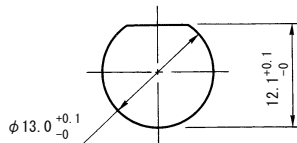
P/N	Finish	
	Shell	Contact
UG-414/U	Ag	Ag

## ■ BNC to BNC

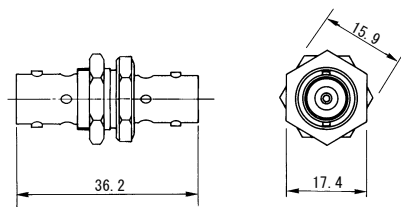


Panel Thickness: 1.5 ~ 3.6

### Mounting Hole

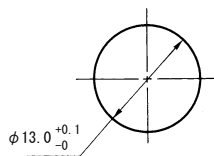


P/N	Finish	
	Shell	Contact
BNC-AB-JJ	Ag	Ag
BNC-AB-JJ-Ni	Ni	Ag

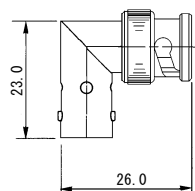


Panel Thickness: 1.5 ~ 5.0

### Mounting Hole



P/N	Finish	
	Shell	Contact
UG-492/U	Ag	Ag

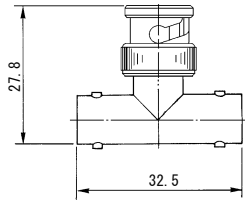


P/N	Finish	
	Shell	Contact
BNC-LA	Ag	Ag
BNC-LA-Ni-1	Ni	Ag

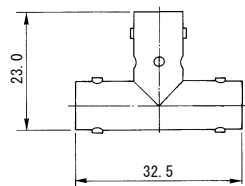
# Adapter Connectors

Unit : mm

## ■ BNC to BNC

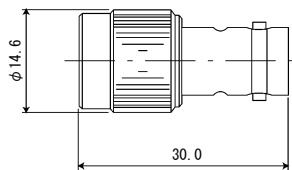


P/N	Finish	
	Shell	Contact
BNC-TA-JPJ	Ag	Ag
BNC-TA-JPJ-Ni	Ni	Ag
UG-274/U	Ag	Ag
BNC-TA-JPJ-NiCAu	Ni	Au

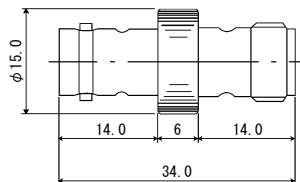


P/N	Finish	
	Shell	Contact
BNC-TA-JJJ	Ag	Ag
BNC-TA-JJJ-Ni	Ni	Ag

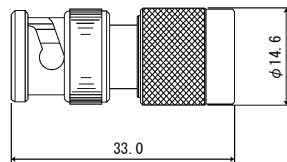
## ■ BNC to TNC



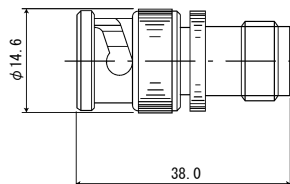
P/N	Finish	
	Shell	Contact
BNCJ-TNCP	Ag	Ag



P/N	Finish	
	Shell	Contact
BNCJ-TNCJ	Ag	Ag



P/N	Finish	
	Shell	Contact
BNCP-TNCP	Ag	Ag



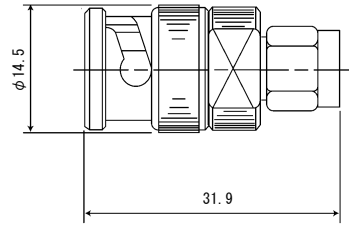
P/N	Finish	
	Shell	Contact
BNCP-TNCJ	Ag	Ag



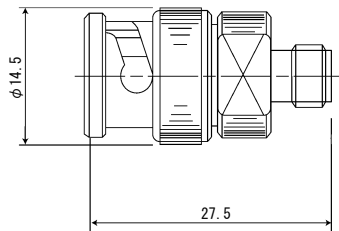
# Adapter Connectors

Unit : mm

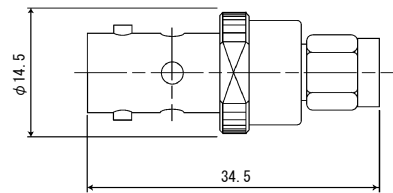
## ■ BNC to DM



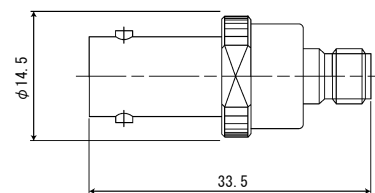
P/N	Finish	
	Shell	Contact
BNCP-DMP	Au	Au



P/N	Finish	
	Shell	Contact
BNCP-DMJ	Au	Au



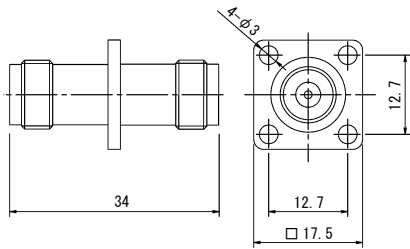
P/N	Finish	
	Shell	Contact
BNCJ-DMP	Au	Au



P/N	Finish	
	Shell	Contact
BNCJ-DMJ	Au	Au

Unit : mm

## ■ TNC to TNC

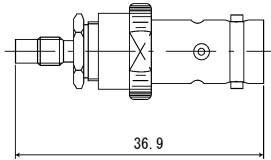


P/N	Finish	
	Shell	Contact
TNC-PA-JJ-D1	Ni	Ag

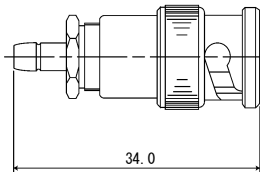
# Adapter Connectors

Unit : mm

## ■ BNC to 27D

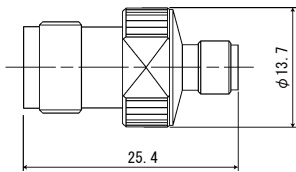


P/N	Finish	
	Shell	Contact
BNCJ-27DSJ	Ag	Ag

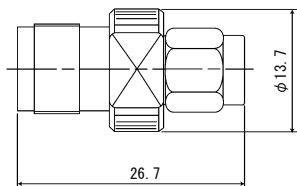


P/N	Finish	
	Shell	Contact
BNCP-27DPJ	Ag	Au

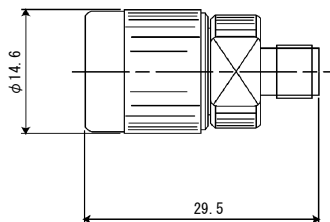
## ■ TNC to DM



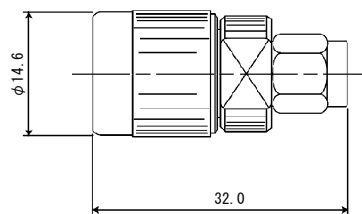
P/N	Finish	
	Shell	Contact
TNCJ-DMJ	Au	Au



P/N	Finish	
	Shell	Contact
DMP-TNCJ	Au	Au



P/N	Finish	
	Shell	Contact
TNCP-DMJ	Au	Au

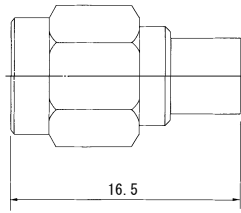


P/N	Finish	
	Shell	Contact
TNCP-DMP	Au	Au

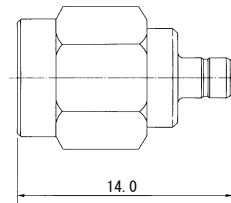
# Adapter Connectors

Unit : mm

## ■ DM to Y90



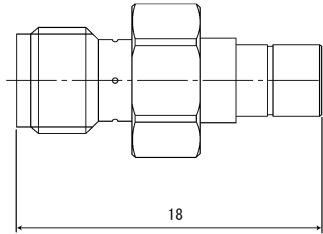
P/N	Finish	
	Shell	Contact
DMP-Y90J	Au	Au



P/N	Finish	
	Shell	Contact
DMP-Y90P	Au	Au

Unit : mm

## ■ DM to LPC

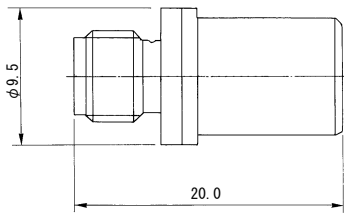


P/N	Finish	
	Shell	Contact
DMJ-LPCP	SUS	Au

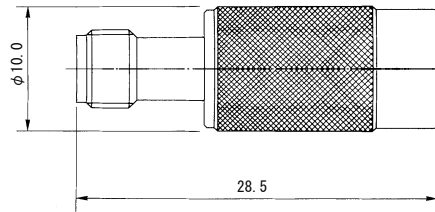
# Adapter Connectors

Unit : mm

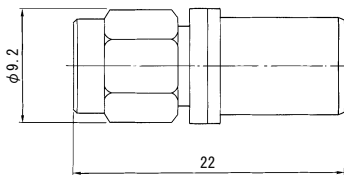
## DM to Y92



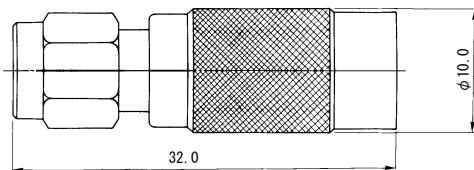
P/N	Finish	
	Shell	Contact
DMJ-Y92J	Ni	Au



P/N	Finish	
	Shell	Contact
DMJ-Y92P	Ni	Au



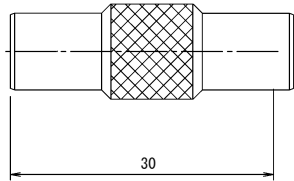
P/N	Finish	
	Shell	Contact
DMP-Y92J	Ni	Au



P/N	Finish	
	Shell	Contact
DMP-Y92P	Ni	Au

Unit : mm

## ■ Y92 to Y92



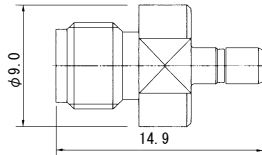
P/N	Finish	
	Shell	Contact
Y92-A-JJ	Ni	Au



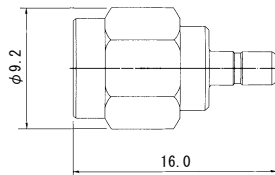
# Adapter Connectors

Unit : mm

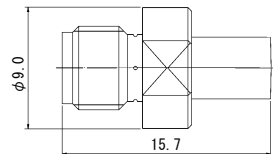
## ■ DM to SSMB



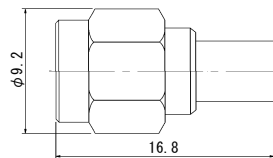
P/N	Finish	
	Shell	Contact
DMJ-SSMBJ	Au	Au



P/N	Finish	
	Shell	Contact
DMP-SSMBJ	Au	Au

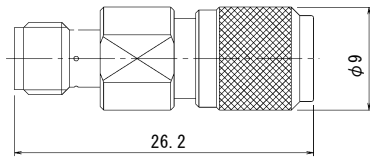


P/N	Finish	
	Shell	Contact
DMJ-SSMBP	Au	Au

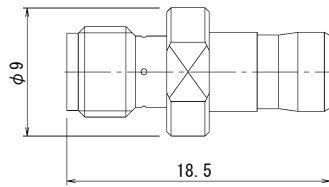


P/N	Finish	
	Shell	Contact
DMP-SSMBP	Au	Au

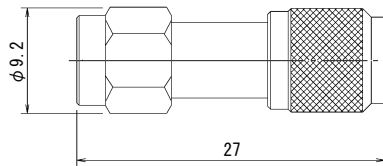
## DM to PDM



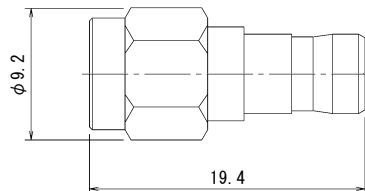
P/N	Finish	
	Shell	Contact
DMJ-SA-PDMP	Ni	Au



P/N	Finish	
	Shell	Contact
DMJ-SA-PDMJ	Ni	Au



P/N	Finish	
	Shell	Contact
DMP-SA-PDMP	Ni	Au

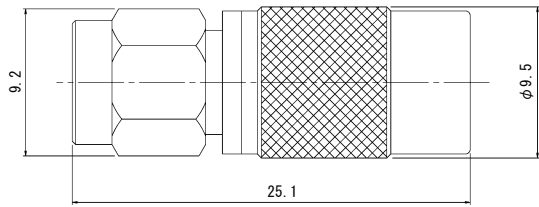


P/N	Finish	
	Shell	Contact
DMP-SA-PDMJ	Ni	Au

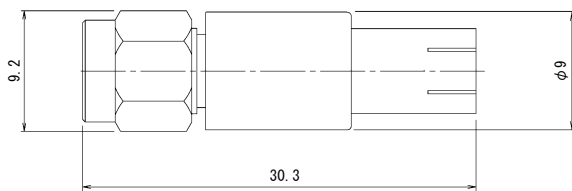
# Adapter Connectors

Unit : mm

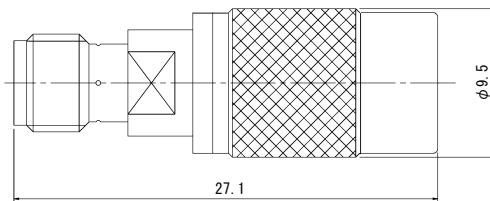
## DM to PMA



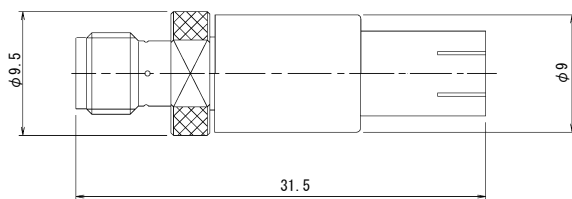
P/N	Finish	
	Shell	Contact
DMP-SA-PMAP	Au	Au



P/N	Finish	
	Shell	Contact
DMP-SA-PMAJ	Au	Au



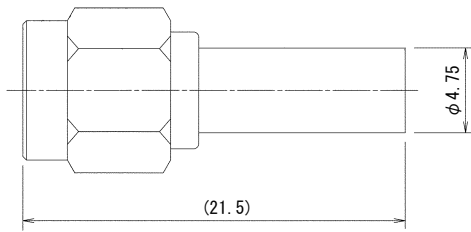
P/N	Finish	
	Shell	Contact
DMJ-SA-PMAP	Au	Au



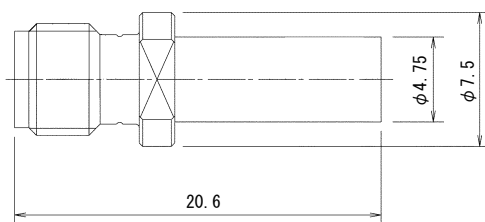
P/N	Finish	
	Shell	Contact
DMJ-SA-PMAJ	Au	Au

Unit : mm

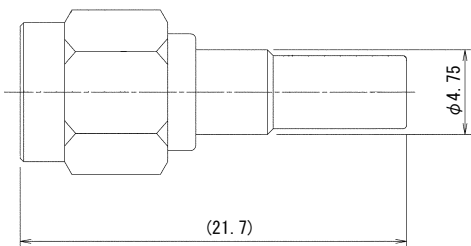
## DM to PMF



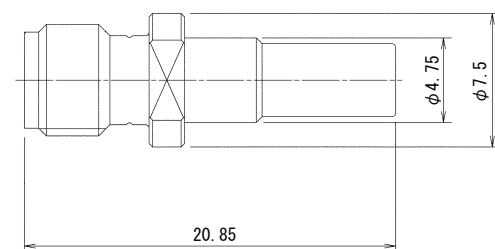
P/N	Finish	
	Shell	Contact
DMP-SA-PMFP	DM side : SUS	Au
	PMF side : Au	



P/N	Finish	
	Shell	Contact
DMJ-SA-PMFP	DM side : SUS	Au
	PMF side : Au	



P/N	Finish	
	Shell	Contact
DMP-SA-PMFJ	Au	Au

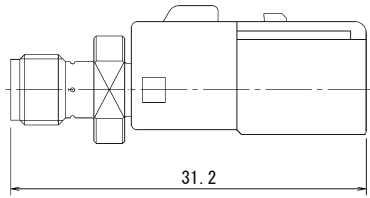


P/N	Finish	
	Shell	Contact
DMJ-SA-PMFJ	Au	Au

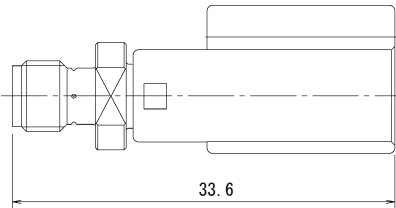
# Adapter Connectors

Unit : mm

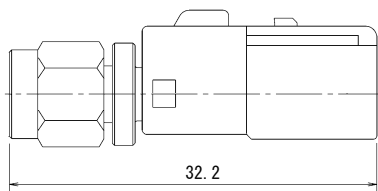
## DM to PLF



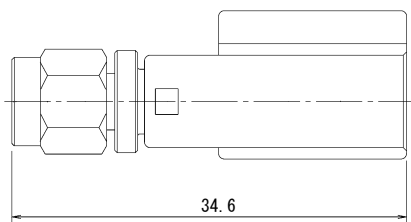
P/N	Finish	
	Shell	Contact
DMJ-SA-PLFP	Au	Au



P/N	Finish	
	Shell	Contact
DMJ-SA-PLFJ	Au	Au

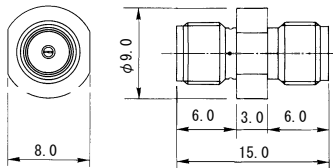


P/N	Finish	
	Shell	Contact
DMP-SA-PLFP	Au	Au

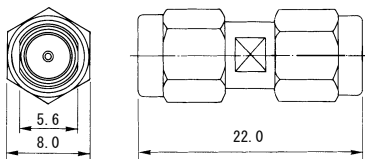


P/N	Finish	
	Shell	Contact
DMP-SA-PLFJ	Au	Au

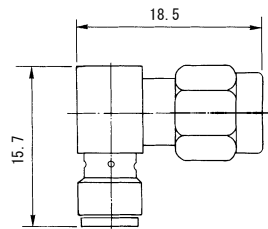
## DM to DM



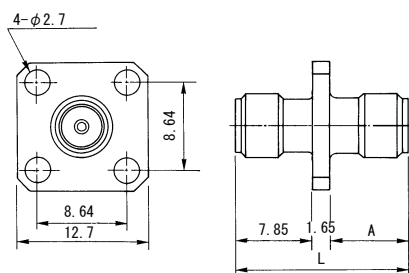
P/N	Finish	
	Shell	Contact
DM-A-JJ	Au	Au



P/N	Finish	
	Shell	Contact
DM-A-PP	Au	Au



P/N	Finish	
	Shell	Contact
DM-LA	Au	Au
DM-LA-JP	Ni	Au

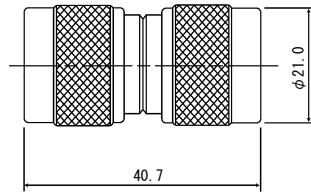


P/N	A	L	Finish	
			Shell	Contact
DM-PA-JJ	7.85	17.35	Au	Au
DM-PA-JJ-3	10.9	20.4	Ag	Ag

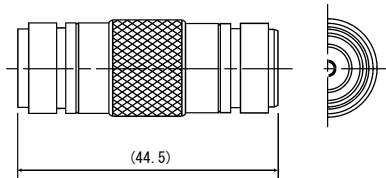
# Adapter Connectors

Unit : mm

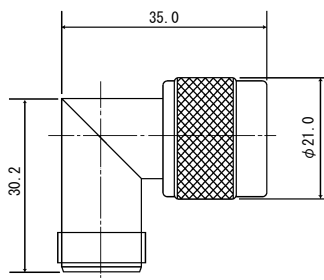
## ■ NC to NC



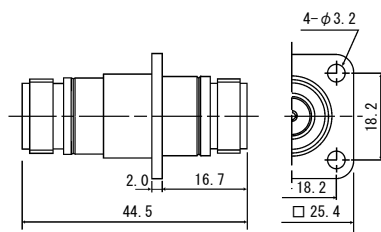
P/N	Finish	
	Shell	Contact
NC-A-PP	Ag	Ag



P/N	Finish	
	Shell	Contact
NC-A-JJ	Ag	Ag



P/N	Finish	
	Shell	Contact
NC-LA	Ag	Ag



P/N	Finish	
	Shell	Contact
NC-PA	Ag	Ag