

Type DPL12 Series



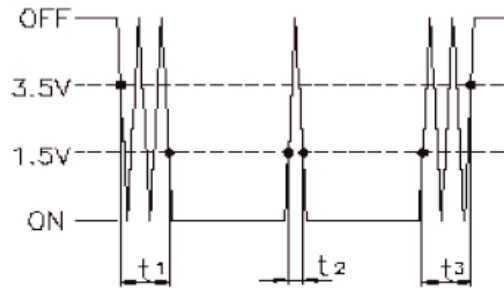
12mm Rotary incremental encoder with LED for use in electronic equipment. Can be supplied with or without switch with customisation to standard options.

Key Features

- 12mm Rotary Encoder
- Incremental Type
- Push on Switch Option
- Various Shaft Lengths
- LED Colour Options
- Detent Options

Characteristics - Electrical

Pulses:	24
Contact Rating:	0.5mA 5VDC
Dielectric Strength:	300VAC / 1mA, 1 minute
Insulation Resistance (min):	100M ohms at 250VAC
Operating Speed (RPM):	60 RPM
Switch Power Rating (where fitted):	16VDC 3A
Switch Contact Resistance:	100m ohm Max
Electrical Travel:	Continuous
Rotational Noise:	t2 = 2.0 ms max (see below)
Chattering:	t1 & t3 = 3.0 ms max (see below)



Code Off area V = 3.5V or more. Code on area V=1.5V or less

LED	Switch – Dual colour – see below for characteristics No Switch Single colour– see below for characteristics
Colour options	No Switch – Red, Green, Blue Switch – 1: Blue/Green, 2: Blue/Orange, 3: Green/Red

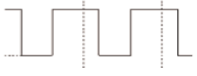
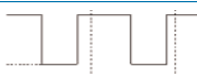
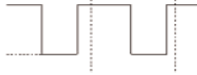

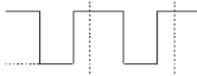

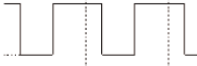

Characteristics - Mechanical

Total Mechanical Travel:	Continuous
Detents:	0, 24
Switch Operating Force:	400+/- 200gf
Switch Travel:	0.5mm
Shaft Type:	F – Flatted, K – Knurled
Shaft Length (from Mounting Surface):	See Chart below

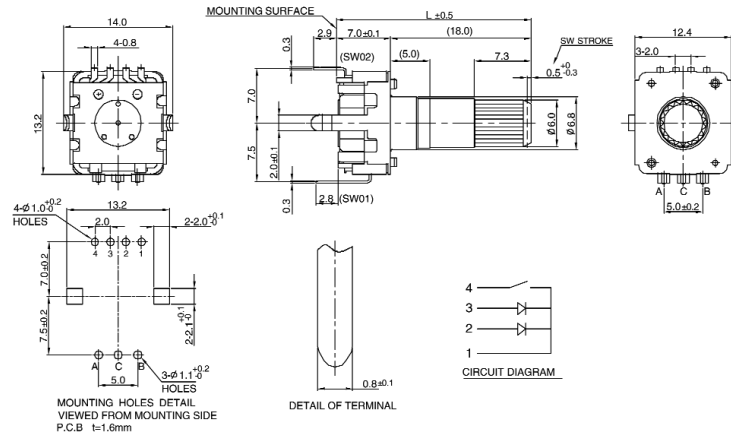
Characteristics - Environmental

Operating Temperature	-40 - +85 degrees C
Rotational Life	30,000 Cycles

Output Signal Format

Shaft Rotational Direction	Signal	Format
Clockwise	A (Terminal A-C)	OFF  ON 
	B (Terminal B-C)	OFF  ON 
Anticlockwise	A (Terminal A-C)	OFF  ON 
	B (Terminal B-C)	OFF  ON 

Dimensions DPL12SV



Shaft Length Without Switch

Type	Dim	Options (mm)		
K	L (from mounting surface)	24 only		
F	L (from mounting surface)	17.5	20	25
		F	5	7

Shaft Length With Switch

Type	Dim	Options (mm)		
K	L (from mounting surface)	25 only		
F	L (from mounting surface)	18.5	21	26
		F	5	7

LED Colour Codes

Switch Option	Code	Description
Switch (Dual Colour)	1	Blue / Green
	2	Blue / Orange
	3	Green / Red
No Switch (Single Colour)	R	Red
	G	Green
	B	Blue

How to Order

DPL12	V	N	24	A	20	F	R
Common Part	Orientation	Detent	Pulses	Bush Details	Shaft Length	Shaft Style	LED Colour
DPL12 – no switch DPL12S – with Switch	V - Vertical	N - None 24 – 24 Clicks	24 – 24 Pulses	A – 5mm	See Relevant Table	F - Flatted K - Knurled	See Relevant Table