


4.25Gb/s Buried Het Laser

LC43W-B

Features:

- 4.25Gb/s operation
- +/-95pm wavelength stability over life without Etalon locker
- Narrow spectral line-width
- Internat TEC with precision NTC thermistor for temperature control
- Entire C & L-band ITU wavelengths available (1527nm to 1605nm)
- GalnAsp SLMQW DFM single frequency laser chip
- InGaAs monitor photo-diode
- Hermetically sealed 14-pin butterfly package with optical isolator
- RoHS compliant 

Applications:

- WDM 4G Fibre channel
- DWDM on ITU Grid



This laser module employs the Oclaro strained layer MQW Buried Heterostructure DFB laser chip, and is specifically for use in Wavelength Division Multiplexed (WDM) 4.25Gb/s Fibre Channel systems. The device is packaged in a hermetically sealed 14-pin butterfly package incorporating an isolator and monitor photodiode for control of the power of the laser over life and all operating conditions.

Parameters

Parameter	Conditions	Min	Typ	Max	Unit
Threshold current (I_{th})			10	22	mA
Slope efficiency by product	10mW	0.143		0.43	
RF input reflection coef (S_{11})	[1]			-10	dB
Forward voltage			1.3	1.8	V
Peak wavelength (λ_p)	[2]	1527		1605	nm
Dispersion penalty at 360 km	[3]			1.5	dB
Time averaged spectral linewidth	-20 dB		0.1	0.6	nm
Side-mode suppression		32	40		dB
Optical rise/fall time	[4]			125	ps
Monitor photo current	Unlocked	50	250	1200	μ A
Monitor dark current				100	nA
Thermistor resistance			10		k Ω
Heatpump current	70°C case temperature	250	600	900	mA
Heatpump voltage	70°C case temperature		1.0	2.4	V
Change of λ_p with laser temp.	15°C to 35°C		0.09		nm/°C
Change in λ over life and operating conditions	Unlocked [5]	-45		+145	pm

[1] 50 Ω measurement system, f = dc - 3GHz

[2] Submount temperature between 20°C to 35°C start of life to achieve required λ_p . For the 10mW version, submount temperature is between 15°C to 35°C start of life.

[3] Standard product dispersion penalty will be compliant to the specified link length of 360km using an extinction ratio of 10dB. Fiber dispersion characteristics are derived from the following equation.

$$D(\lambda) = \frac{S_0}{4} \left(\lambda - \frac{\lambda_0^4}{\lambda^3} \right) ps / (nm.km)$$

Where $S_0 = 0.092 ps / (nm^2.km)$ and $\lambda = 1302 nm$.

[4] Measurements determined from 20 - 80% pk - pk.

[5] For more information on wavelength control and drift over life refer to applications note DR1670. To give symmetrical wavelength performance about the ITU channel wavelength (+/-95pm) offset the laser wavelength by -50pm at start of life set up.

Absolute Maximum Ratings

Parameter	Min	Max	Unit
Case operating temperature	0	70	°C
Laser submount operating temperature [1] [2]	20	35	°C
Storage temperature	-40	85	°C
Laser current above I _{th}		100	mA
Laser reverse voltage		1.0	V
Laser reverse current		10	μA
Monitor diode bias		-10	V
Heatpump voltage		2.4	V
Fiber bend radius	30		mm

Notes:

- [1] Product without locker can be tuned onto the next 100GHz ITU channel in the red shift direction (2x100GHz tunability) by increasing the submount temperature to a maximum of 43°C.

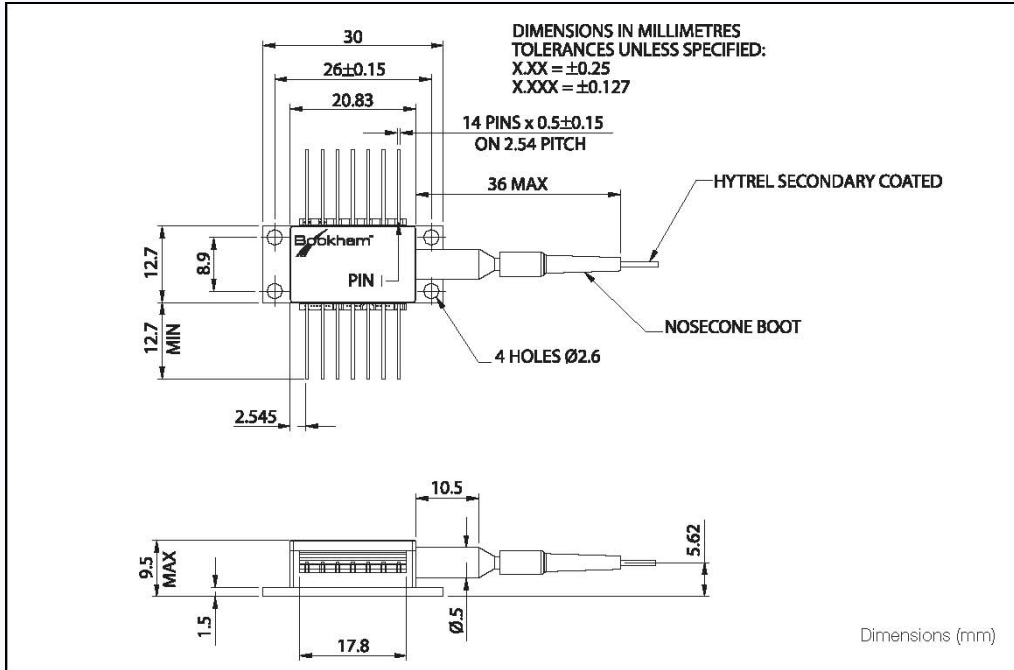
Reliability/Quality

Meets qualification requirements of Telcordia / Bellcore GR468-Core for central office environment.

Operating reliability <500 FITs1 in 15 years.

1- Assumes laser die submount held at <35°C by internal thermoelectric cooler, mean forward current of 35 mA, and end of life limits based on 10 mA increase in I_{th} and 25% change in laser efficiency. FIT rate data for other end of life criteria, including minimum extinction ratio requirements, are available upon request.

Outline Drawing



Outline Drawing

Figure 1: Outline Drawing

Note:

Devices can be supplied with the leads trimmed to a length of 3.81 mm. Please see Ordering Information section. Fiber length: 1130mm to 1190mm

Instructions for use – LC43W****B

Pin 1 and Pin 2 Thermistor

The thermistor is used in a control loop in conjunction with the thermo-electric cooler to maintain the laser submount temperature at the required value for wavelength. Operating current should be less than 100 μ A to prevent self-heating errors.

Pin 3 Laser DC bias (-)

Laser bias current (negative with respect to package ground) is applied via this pin which forms one side of the bias-T connection to the laser cathode.

Pin 4 Monitor anodes, Pin 5 Common Monitor cathode

The back facet monitor provides a mean power reference for the laser and is normally operated with a 5V reverse bias.

Pin 6 TEC (+), Pin 7 TEC (-)

Applying a positive voltage on pin 6 with respect to pin 7 will cause the internal submount to be cooled relative to the case temperature. Reversing the polarity will raise the submount temperature relative to the case. The TEC supply should be capable of delivering up to 0.9 A at 2.4V.

Pin 8, 9, 11, 13 Case ground

These pins must be grounded in all applications.

Pin 10 N/C

This pin is not connected for the LC43W product and it should be grounded if possible

Pin 12 Laser modulation (-)

The data input (modulation current) is applied via this pin which is a nominal 25 Ohm impedance coplanar line.

Pin 14 N/C

This pin is not connected. It should be grounded if possible.

Connections

Pin	Function
1	Thermistor
2	Thermistor
3	Laser DC bias (-)
4	Monitor Anode (-)
5	Monitor Cathode (+)
6	TEC (+)
7	TEC (-)
8	Case Ground
9	Case Ground
10	Not Connected
11	Case Ground
12	Laser Modulation (-)
13	Case Ground
14	Not Connected

Safety Information

Laser safety classifications:

IEC 60825-1: Edition 1.2 Class 1M
21 CFR Ch.1 (4-1-97 Edition) Class IIIb

Electrostatic discharge:

ESD threshold >500V
TA-TSY-000870 class 3.

RoHS Compliance



Oclaro is fully committed to environment protection and sustainable development and has set in place a comprehensive program for removing polluting and hazardous substances from all of its products. The relevant evidence of RoHS compliance is held as part of our controlled documentation for each of our compliant products. RoHS compliance parts are available to order, please refer to the ordering information section for further details.

Ordering Information:

LC43W	[Wavelength]	[Power Option]	[Reach]	[Connector]
****		B = 10 mWpk	B	J28 = SC/PC J34 = FC/PC J57 = LC J59 = MU

**** = Last four digits of wavelength value E.g. for $\lambda_p = 1545.32\text{nm}$ **** = 4532

Product without locker can be tuned onto the next 100GHz ITU channel in the red shift direction (2x100GHz tunability) i.e. an LC43W4135CB-J28 can be tuned to service the 1542.14nm ITU channel.

Other connector types are available on request.

E.g. LC43W4532BB-J28 is a 10mW 1545.32 nm device with an SC connector.

Trimmed lead option

Devices can be supplied with the leads trimmed to a length of 3.81mm type.

This option can be specified by adding a 'K' suffix after the reach option.

Contact Information

Oclaro Worldwide Headquarters

2584 Junction Avenue
San Jose
CA 95134
USA

Tel: +1 408 919 1500
Fax: +1 408 919 6083

www.oclaro.com
sales@oclaro.com

Important Notice

Performance figures, data and any illustrative material provided in this data sheet are typical and must be specifically confirmed in writing by Oclaro before they become applicable to any particular order or contract. In accordance with the Oclaro policy of continuous improvement specifications may change without notice. The publication of information in this data sheet does not imply freedom from patent or other protective rights of Oclaro or others. Further details are available from any Oclaro sales representative.



BH13202 1.0 July 2009
 ©Oclaro 2009. Oclaro the Oclaro, Inc. logo, and all other Oclaro, Inc product names and slogans are trademarks or registered trademarks of Oclaro, Inc. in the U.S.A. or other countries. Products described in this datasheet may be covered by one or more patents in the U.S.A. and abroad. Information in this datasheet is subject to change without notice.