



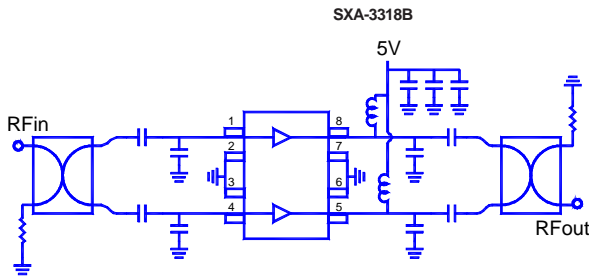
## Product Description

Sirenza Microdevices' SXA-3318B amplifier is a high efficiency GaAs Heterojunction Bipolar Transistor (HBT) MMIC housed in a low-cost surface-mountable plastic package. These HBT MMICs are fabricated using molecular beam epitaxial growth technology which produces reliable and consistent performance from wafer to wafer and lot to lot.

These amplifiers are specially designed for use as driver devices for infrastructure equipment in the 400-2500 MHz cellular, ISM, WLL, PCS, W-CDMA applications.

Its high linearity makes it an ideal choice for multi-carrier as well as digital applications.

The matte tin finish on Sirenza's lead-free package utilizes a post annealing process to mitigate tin whisker formation and is RoHS compliant per EU Directive 2002/95. This package is also manufactured with green molding compounds that contain no antimony trioxide nor halogenated fire retardants.



## SXA-3318B

## SXA-3318BZ



400-2500 MHz

Balanced 1/2 W Medium Power

GaAs HBT Amplifier with Active Bias



## Product Features

- Now available in Lead Free, RoHS Compliant, & Green Packaging
- On-chip Active Bias Control
- Balanced for excellent input/output VSWR and minimized reflections
- High OIP<sub>3</sub> : +47 dBm typ.
- High P<sub>1dB</sub> : +28 dBm typ.
- Patented High Reliability GaAs HBT Technology
- Surface-Mountable Power Plastic Package

## Applications

- W-CDMA, PCS, Cellular Systems
- High Linearity IF Amplifiers
- Multi-Carrier Applications

Symbol	Parameters: Test Conditions: Z <sub>0</sub> = 50 Ohms, Ta = 25°C, Measured in Evaluation Circuit		Units	Min.	Typ.	Max.
P <sub>1dB</sub>	Output Power at 1dB Compression	f = 850 MHz f = 1960 MHz f = 2140 MHz	dBm	27.0	27.5 28.0 28.0	
S <sub>21</sub>	Small signal gain	f = 850 MHz f = 1960 MHz f = 2140 MHz	dB	10.5	16.0 17.5 12.8	19.0 13.5
VSWR <sub>in</sub>	Input VSWR	f = 850 MHz f = 1960 MHz f = 2140 MHz	-		1.3 1.2 1.2	1.7
OIP <sub>3</sub>	Output Third Order Intercept Point (P <sub>out</sub> /Tone = +11 dBm, Tone spacing = 1 MHz)	f = 850 MHz f = 1960 MHz f = 2140 MHz	dBm	44	44 47 47	
ACP	Adjacent Channel Power: IS-95 at P <sub>OUT</sub> = 19 dBm IS-95 at P <sub>OUT</sub> = 19 dBm W-CDMA at P <sub>OUT</sub> = 18 dBm	f = 880 MHz f = 1960 MHz f = 2140 MHz	dBc		-55 -55 -50	
NF	Noise Figure	f = 850 MHz f = 1960 MHz f = 2140 MHz	dB		4.5 5.1 5.1	6.0
I <sub>b</sub>	Device Current (120 mA per amplifier)	V <sub>cc</sub> = 5V	mA	180	240	280
R <sub>th(j-l)</sub>	Thermal Resistance (junction - lead) per amplifier *Note: 2 amplifiers per packaged part		° C/W		70	

The information provided herein is believed to be reliable at press time. Sirenza Microdevices assumes no responsibility for inaccuracies or omissions. Sirenza Microdevices assumes no responsibility for the use of this information, and all such information shall be entirely at the user's own risk. Prices and specifications are subject to change without notice. No patent rights or licenses to any of the circuits described herein are implied or granted to any third party. Sirenza Microdevices does not authorize or warrant any Sirenza Microdevices product for use in life-support devices and/or systems.

Copyright 2003 Sirenza Microdevices, Inc. All worldwide rights reserved.

303 South Technology Ct., Broomfield, CO 80021

Phone: (800) SMI-MMIC

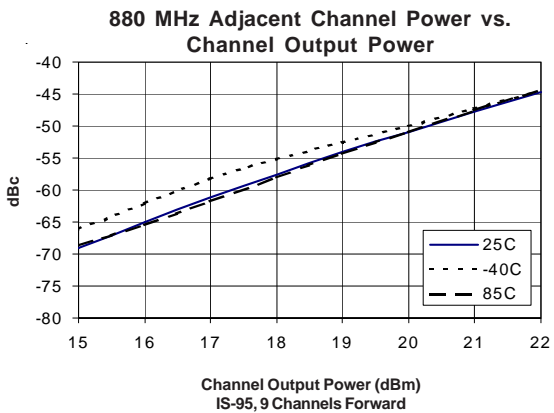
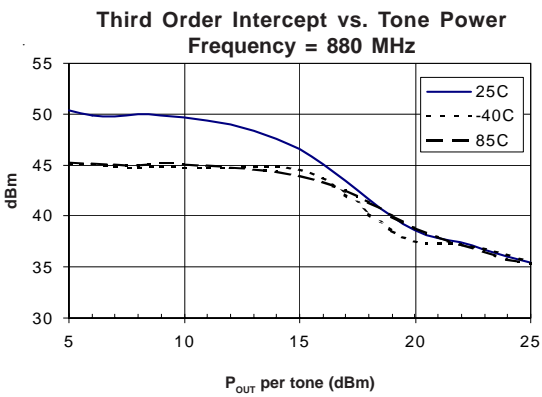
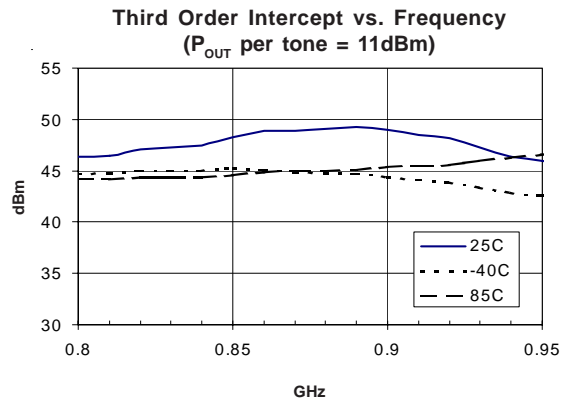
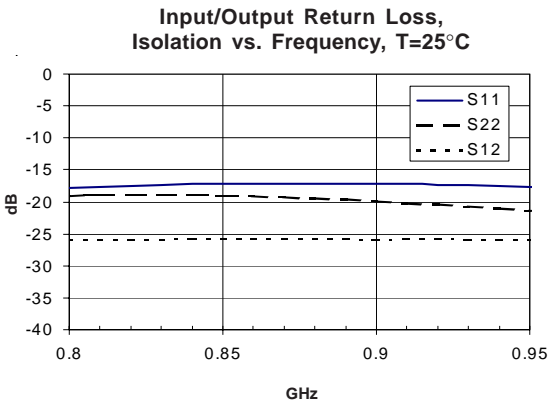
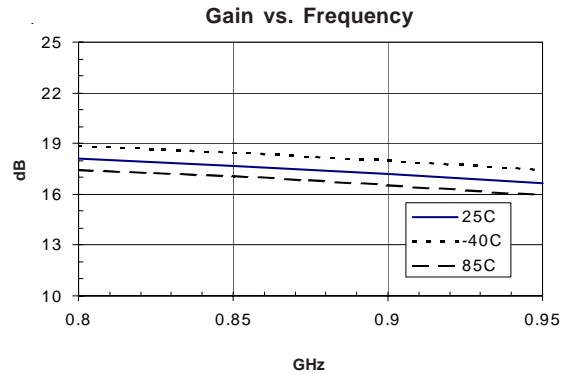
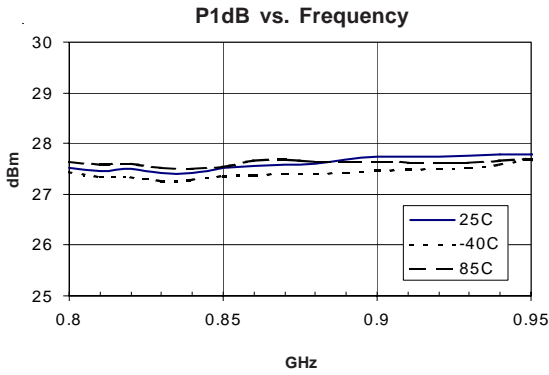
<http://www.sirenza.com>

EDS-103164 Rev B



### 850 MHz Application Circuit Data, $V_{CC} = 5V$ , $I_D = 240mA$

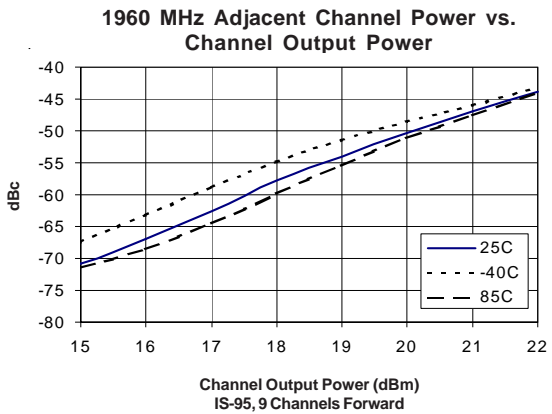
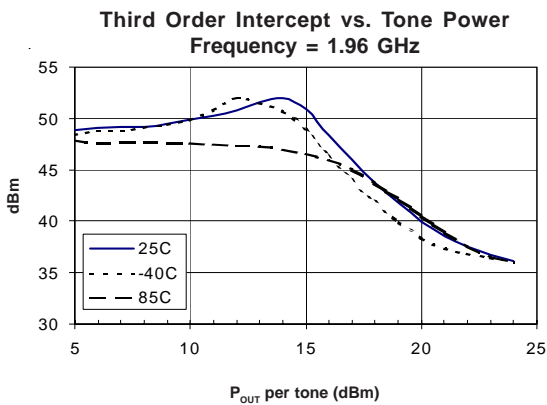
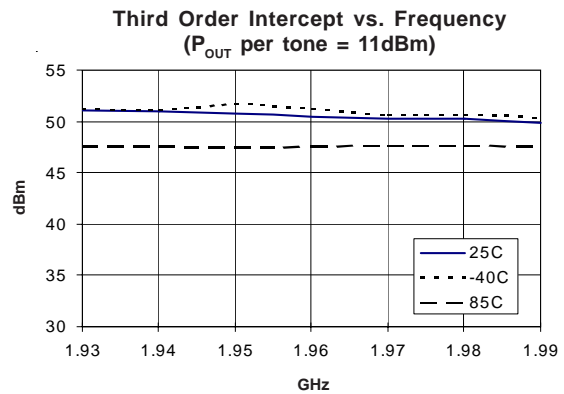
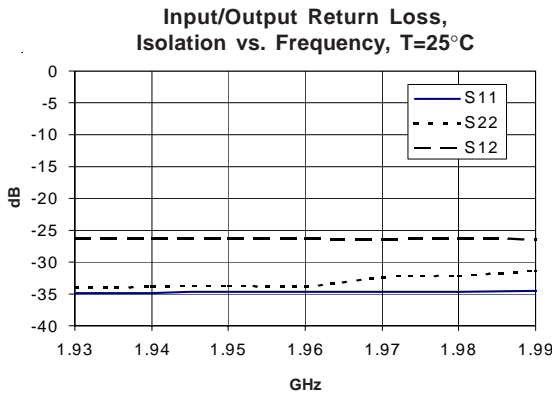
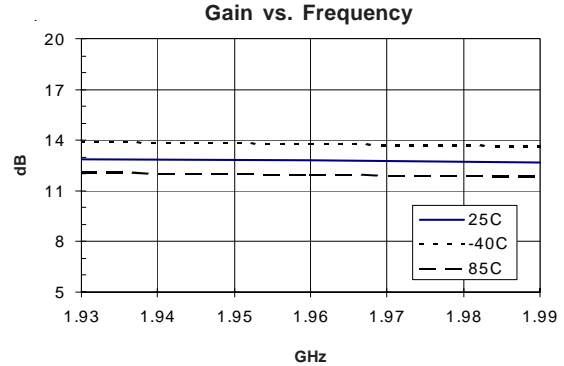
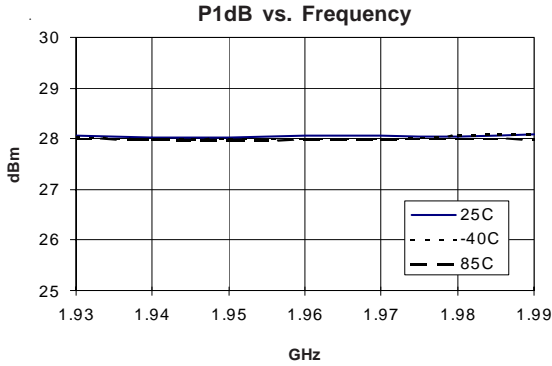
Note: Tested in Balanced Configuration shown in Application Circuit, tuned for Output IP3





### 1960 MHz Application Circuit Data, $V_{CC} = 5V$ , $I_D = 240mA$

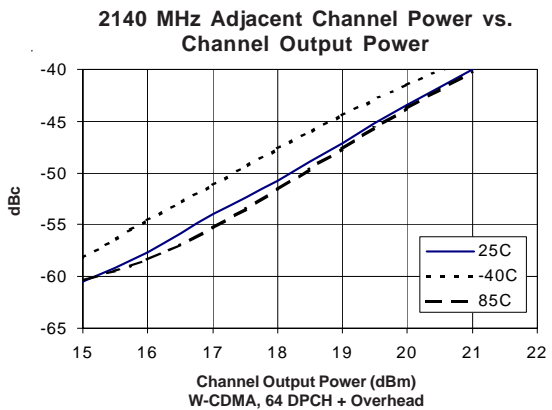
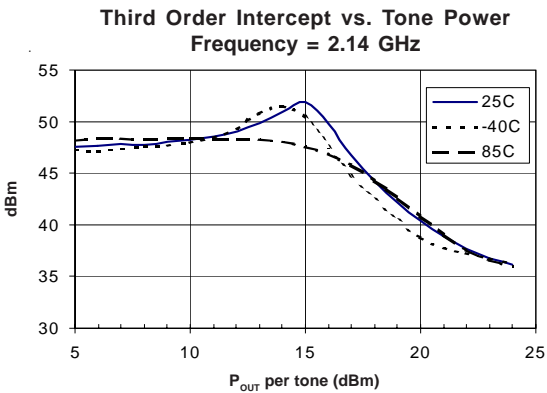
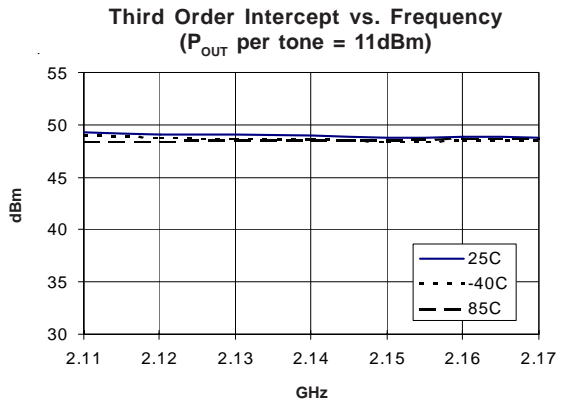
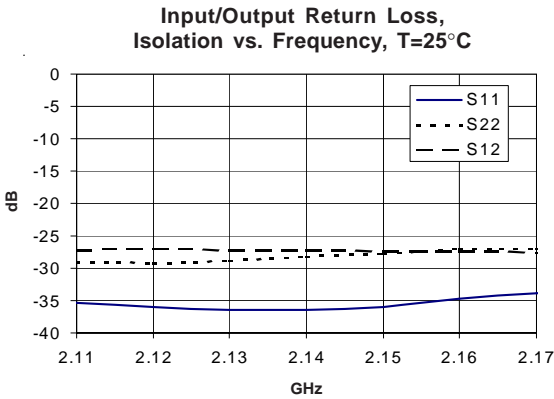
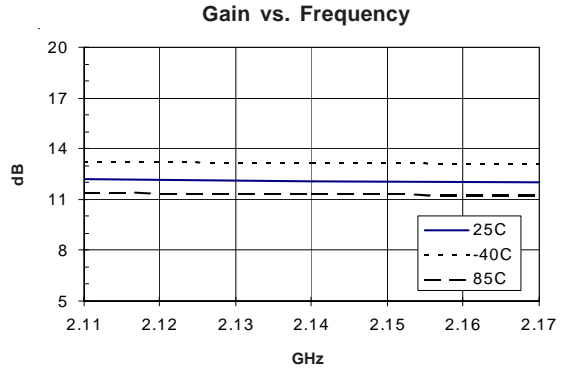
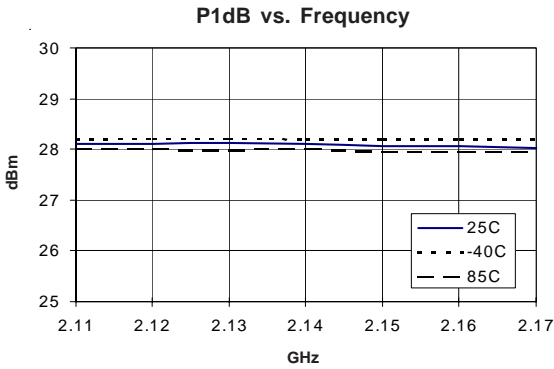
Note: Tested in Balanced Configuration shown in Application Circuit, tuned for Output IP3



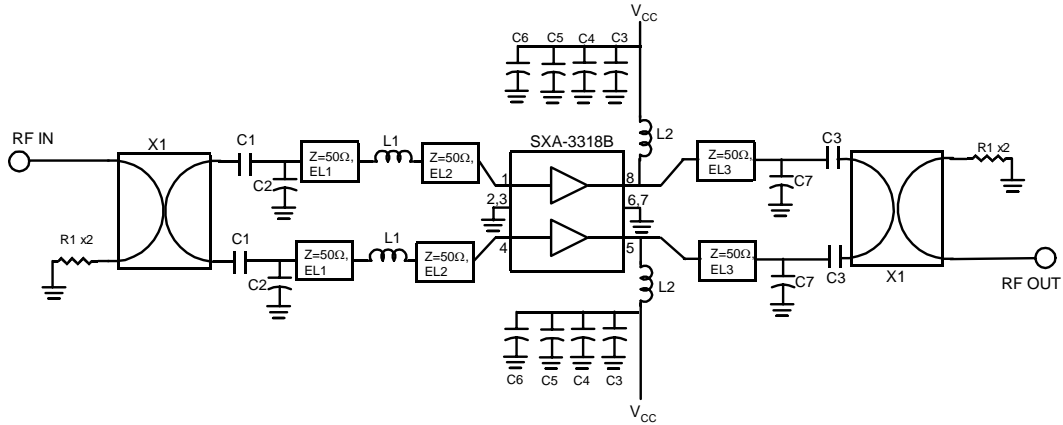


### 2140 MHz Application Circuit Data, $V_{CC} = 5V$ , $I_D = 240mA$

Note: Tested in Balanced Configuration shown in Application Circuit, tuned for Output IP3



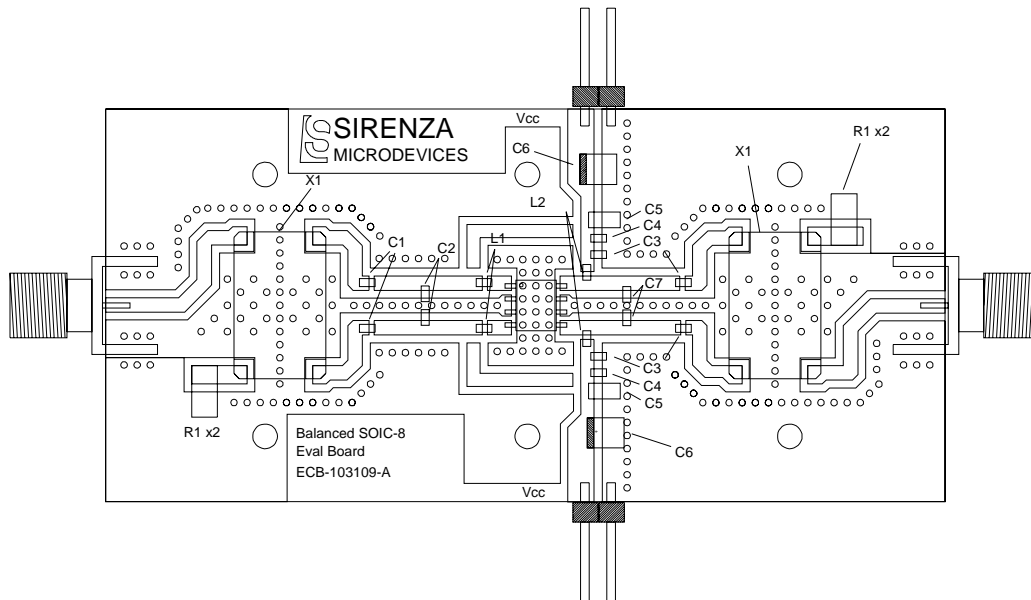
### Application Schematic (850 MHz)



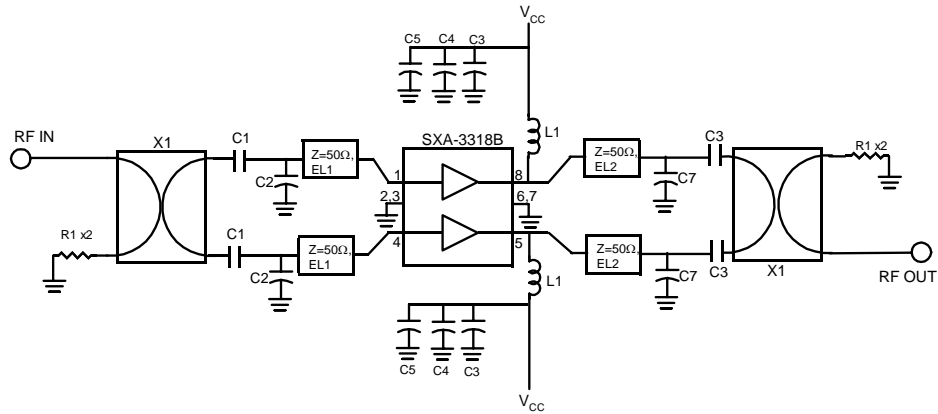
Ref. Des.	Vendor Series	850 MHz
C1, C3	Rohm MCH18	47pF, 5%
C2	Rohm MCH18	3.9pF, $\pm 0.25$ pF
C4	Rohm MCH18	1000pF, 5%
C5	Rohm TAJB104KLRH	0.1uF, 10%
C6	Rohm TAJB106K020R	10uF, 10%
C7	Rohm MCH18	3.3pF, $\pm 0.25$ pF
L1	Toko LL1608-FS	1.2nH, $\pm 0.3$ nH

Ref. Des.	Vendor Series	850 MHz
L2	Toko LL1608-FS	33nH, 5%
EL1	50 Ohms	9.9°
EL2	50 Ohms	4.4°
EL3	50 Ohms	11°
X1	Sirenza Coupler	AH03L
R1	Rohm MCR100J	100 Ohm, 5%

### Evaluation Board Layout (850 MHz)



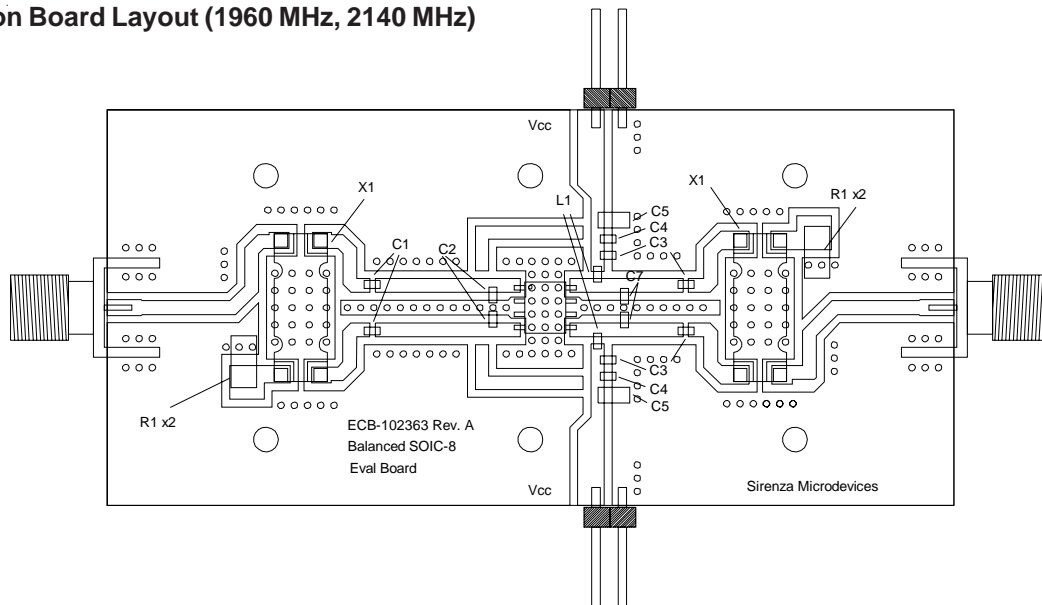
### Application Schematic (1960 MHz, 2140 MHz)



Ref. Des.	Vendor Series	1960 MHz	2140 MHz
C1, C3	Rohm MCH18	22pF, 5%	22pF, 5%
C2	Rohm MCH18	1.2pF, $\pm 0.25$ pF	1.2pF, $\pm 0.25$ pF
C4	Rohm MCH18	1000pF, 5%	1000pF, 5%
C5	Rohm TAJB104KLRH	0.1uF, 10%	0.1uF, 10%
C7	Rohm MCH18	1.0pF, $\pm 0.25$ pF	1.0pF, $\pm 0.25$ pF

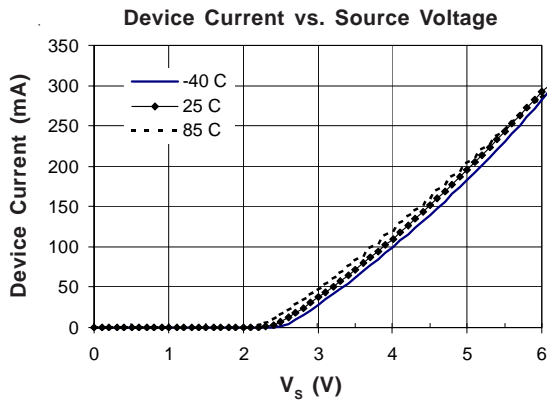
Ref. Des.	Vendor Series	1960 MHz	2140 MHz
L1	Toko LL1608-FS	18nH, 5%	18nH, 5%
EL1	50 Ohms	10.1°	11°
EL2	50 Ohms	20.9°	22.8°
X1	Sirenza Coupler	AM03M	AM03M
R1	Rohm MCR100J	100 Ohm, 5%	100 Ohm, 5%

### Evaluation Board Layout (1960 MHz, 2140 MHz)





Pin #	Function	Description	Device Schematic
1, 4	RF In	RF input pin. This pin requires the use of an external DC blocking capacitor.	
2, 3, 6, 7	GND	Connection to ground. Use via holes to reduce lead inductance. Place vias as close to ground leads as possible.	
5, 8	RF Out/Vcc	RF output and bias pin. Bias should be supplied to this pin through an external RF choke. Because DC biasing is present on this pin, a DC blocking capacitor should be used in most applications (see application schematic). The supply side of the bias network should be well bypassed. An output matching network is necessary for optimum performance.	
EPAD	GND	Exposed area on the bottom side of the package needs to be soldered to the ground plane of the board for thermal and RF performance. Several vias should be located under the EPAD as shown in the recommended land pattern (page 8).	



**Absolute Maximum Ratings**

Parameter	Absolute Limit
Max. Supply Current ( $I_b$ ) per amplifier (2 amplifiers per packaged part)	240 mA
Max. Device Voltage ( $V_{cc}$ )	6.0 V
Max. Power Dissipation per amplifier (2 amplifiers per packaged part)	1500 mW
Max. RF Input Power per amplifier (2 amplifiers per packaged part)	100 mW
Max. Junction Temp. ( $T_j$ )	+160 °C
Operating Lead Temp. ( $T_L$ )	-40 to +85 °C
Max. Storage Temp.	+150 °C

Operation of this device beyond any one of these limits may cause permanent damage. For reliable continuous operation, the device voltage and current must not exceed the maximum operating values specified in the table on page one.

Bias Conditions should also satisfy the following expression:  
 $I_b V_{cc} (max) < (T_j - T_L) / R_{\theta j-L}$



**ESD: Class 1B (Passes 500V ESD pulse)**

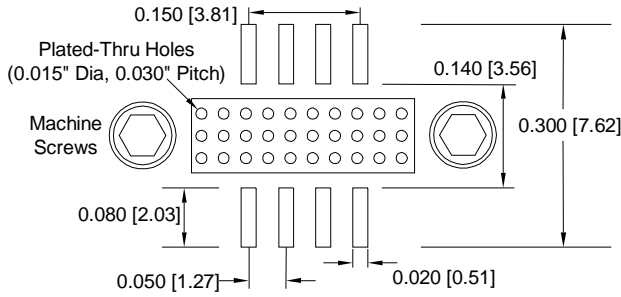
Appropriate precautions in handling, packaging and testing devices must be observed.

**Moisture Sensitivity Level: Level 1 (MSL-1)**

No special moisture packaging/handling is required during storage, shipment, or installation of the devices.



### Recommended Land Pattern



### Part Number Ordering Information

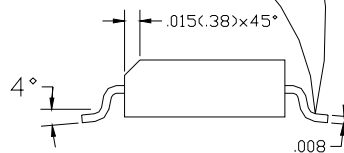
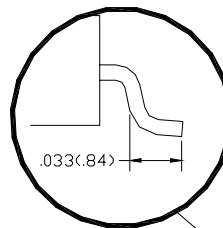
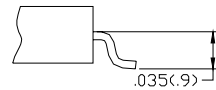
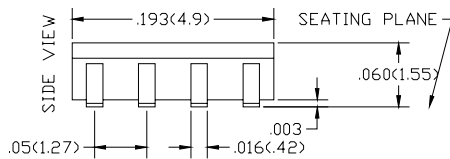
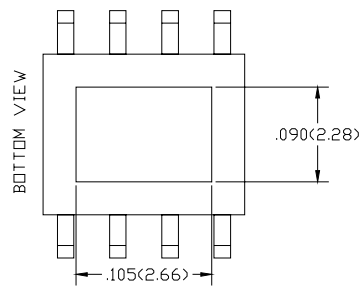
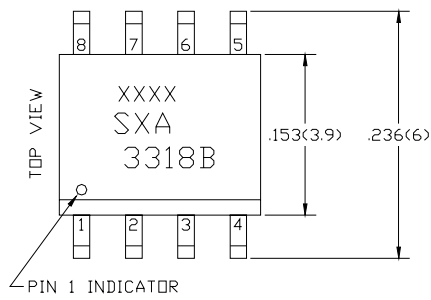
Part Number	Devices Per Reel	Reel Size
SXA-3318B	500	7"
SXA-3318BZ	500	7"

### Part Symbolization

The part will be symbolized with a "SXA3318B" or "SXA3318BZ" designator on the top surface of the package.

### Package Outline Drawing

(See SMDI MPO-101644 for tolerances)



**Note:** XXXX represents the lot code  
 DIMENSIONS ARE IN INCHES [MM]