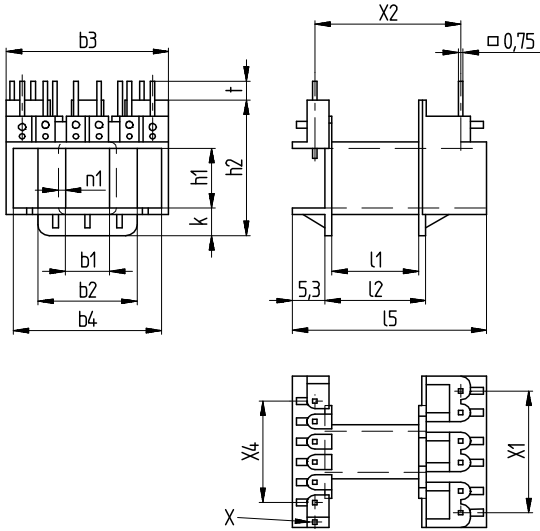


Sketch with main dimensions



For applications with enlarged creepage distances.

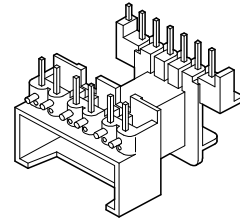
Standard material: Ultramid A3X2G7, natural  
Temp. Class B (130°C) UL 94-V0

Creepage distances:

at long bobbin side = 12,00 mm  
at short bobbin side = 5,90 mm

X = Additional Pin

ST  
with molded-in wires  $\square$  0,75 mm



b1	b2	b3	b4	h1	h2	k	n1	l1	l2	l5	t	X1	X2	X4	Type	Article-No.
± 0,1	± 0,2	± 0,2	± 0,2	± 0,1	± 0,2	± 0,1	+ 0,2	± 0,2	± 0,2	± 0,2	± 0,2	± 0,2	± 0,2	± 0,2		
7,6	17,2	27,7	26,0	11,1	25,1	5,0	0,75	15,5	17,2	33,4	3,3	1x4 2x5,25 2x4	26,0	5x3,75	EE 25/11/1 ST Wz 2589/1 ST	7146

① X3 = max. number of slots or terminals.



EF25/11-K-H-13P